

SPEED, QUALITY, PREDICTABILITY NO COMPROMISE

Green X 12TM



SMART FOCUS : 1 SCAN, 5 IMAGES

ONE 12X8.5, THREE 4X4 AND ONE AUTO PANO AT THE SAME TIME



4-IN-1 DIGITAL [PANO | CEPH | 3D CBCT | MODEL SCAN]



MULTI FOV SELECTION



ENDO MODE WITH 0.05mm VOXEL SIZE



3D MODEL SCAN



41 LAYERS PANORAMIC IMAGES: INSIGHT PAN

49.5 μ m
CMOS
Sensor

THE ADVANCED 4-IN-1 DIGITAL X-RAY IMAGING SYSTEM

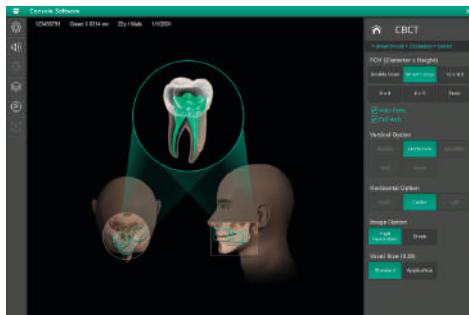
Green X is an advanced 4-in-1 digital x-ray imaging system that incorporates Pano, Ceph (optional), CBCT, and Model Scan. With Vatech's extensive experience in the dental imaging field, the Green X provides high-quality images with lower radiation by combining image processing. This will improve your diagnostic accuracy and lead to increased treatment planning and patient satisfaction.



SMART FOCUS : 1 SCAN, 5 IMAGES

With Green X 12, you will get high-resolution images of multiple treatment areas with a single shot. With 1 scan, you get 5 different high-resolution images: three 4x4, one 12x8.5 image and one Auto PANO image. Other advantages are minimal X-ray exposure to the patients and less work for staff, which means a faster and more efficient workflow.

CAPTURE SOFTWARE

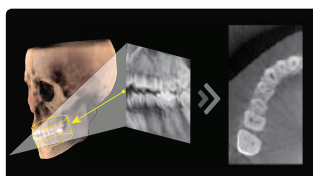


SMART FOCUS



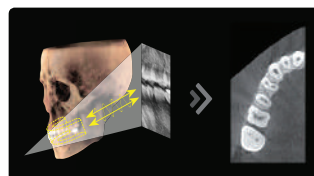
COMPRESSED SENSING TECHNOLOGY

Vatech dramatically improves its image quality with much less artifact and noise via its Compressed Sensing Technology (CST), iterating its reconstruction process 10 times more than the normal amount to depict the object's true representation.

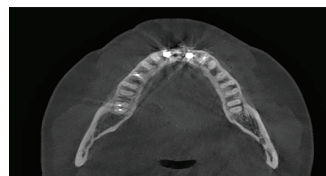


Normal Image
Reconstruction

vs.

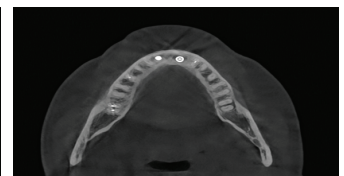


Green X 12 Image
Reconstruction



Normal Image
Reconstruction

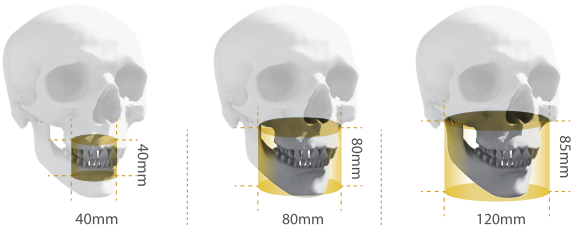
vs.



Green X 12 Image
Reconstruction

MULTI FOV SELECTION

Green X offers a range of selectable fields of view. The Multi FOV option allows users to select the optimum FOV mode while minimizing exposure to areas that are not in the region of interest. The selection includes the following FOV sizes for diagnostic needs: 4x4, 8x5, 8x8 and 12x8.5.

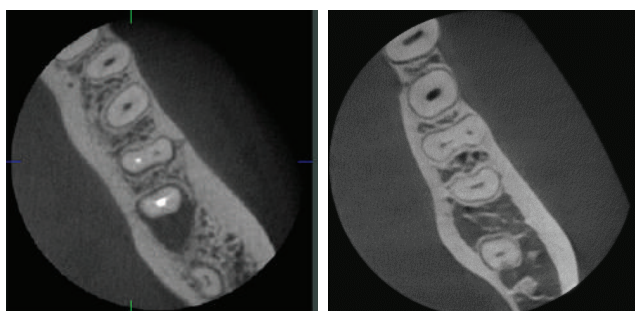


	FOV 4x4	FOV 8x5/8x8	FOV 12x8.5
REGION	- Single tooth capture	- Central dentition - TMJ (R or L)	- Dual arch including sinus and nerve - TMJ (R or L)
CLINICAL IMPLICATION	- Implant single site - Endo - Perio - Complex impaction (3rd) - OMS - Supernumerary : Ortho	- Implantology - Guided Surgery - General Dentist - OMS - Orthodontics	- Surgical guides - Sinus lifts - Bone grafting - Bi lateral sinus augmentation

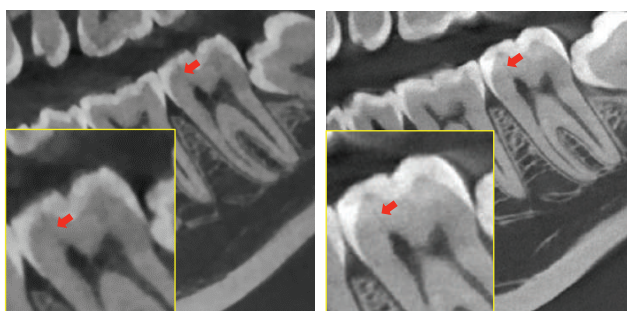
ENDO MODE WITH HIGH RESOLUTION

With its 4cm x 4cm volume mode and 50 micron voxel size, the Endo mode will optimize treatment of highly-focused regions of interest. It is ideal for endodontic use because the dentist is able to achieve an extraordinary image in a high-resolution voxel size.

DENTAL MODE VS. ENDO MODE

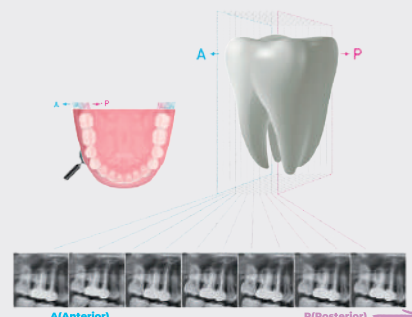
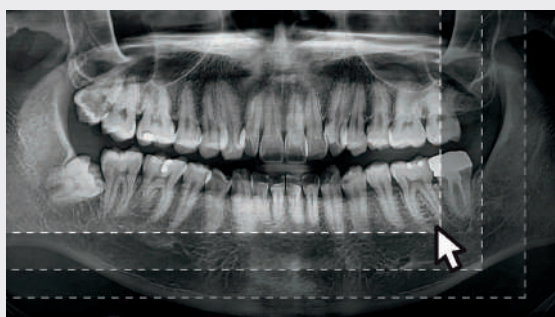


DENTAL MODE VS. ENDO MODE



INSIGHT 2.0 / FREE FOV

The Insight Pan is capable of taking a multilayered panoramic image which provides a unique in-depth look across a single focal trough. Insight 2.0 has an upgraded free FOV feature so you will be able to capture only the region of interest.

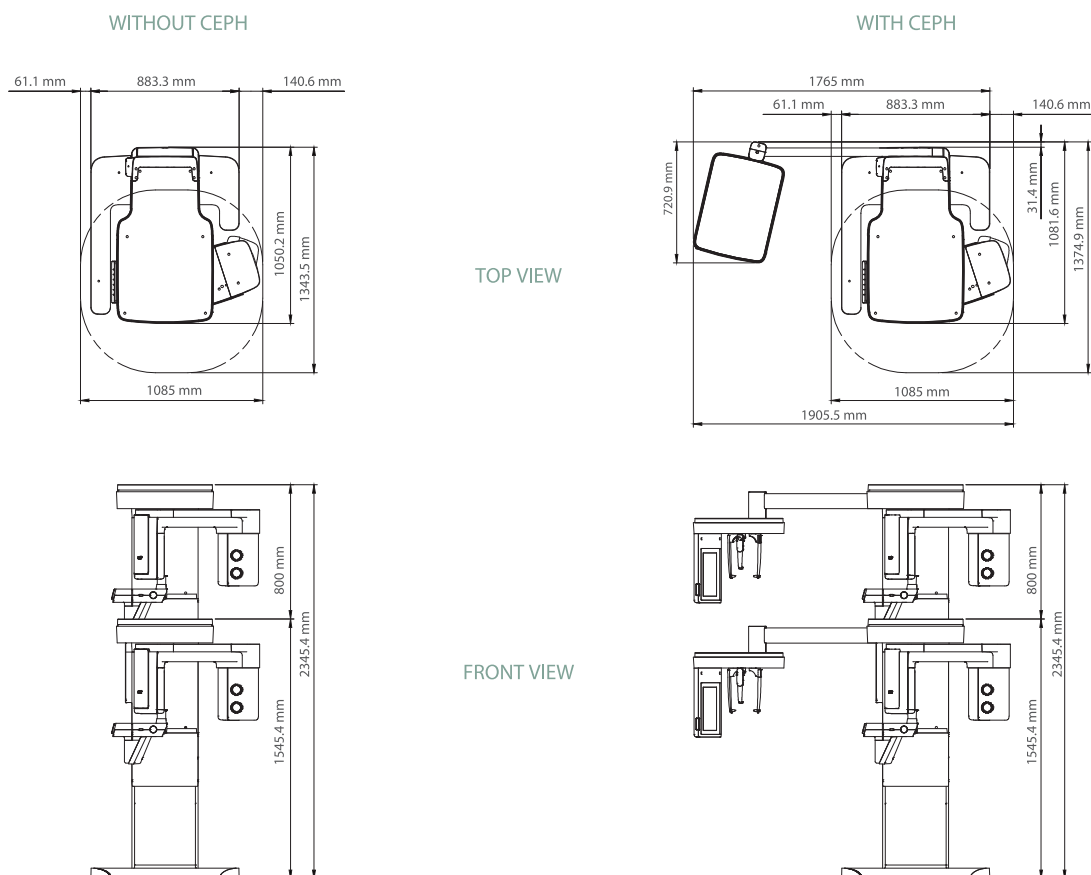


SPECIFICATIONS [Green X : PHT-75CHS]

Function	CBCT + PANO + Model Scan + CEPH	
Focal Spot Size	0.5 mm (IEC 60336)	
CT FOV Size	4x4, 8x5, 8x8, 12x8.5 cm	
Voxel Size	4x4	0.05 mm
	8x5 / 8x8 / 12x8.5	0.12 mm / 0.2 mm
Scan Time	Pano	7.5 sec / 14.1 sec
	Ceph	1.9 sec / 4.9 sec
	CBCT	10.0 sec / 13.0 sec
Gray Scale	14 Bit	
Tube Voltage / Current	60 - 99 kVp / 4 - 16 mA	
Weight	Without CEPH unit	162.9 kg (without Base)
		217.9 kg (with Base)
	With CEPH unit	187.9 kg (without Base)
		242.9 kg (with Base)
Dimensions	Without CEPH unit	1085.0 mm (L) x 1343.5 mm (W) x 2315.4 mm (H) - without Base
		1085.0 mm (L) x 1343.5 mm (W) x 2345.4 mm (H) - with Base
	With CEPH unit	1905.5 mm (L) x 1374.9 mm (W) x 2315.4 mm (H) - without Base
		1905.5 mm (L) x 1374.9 mm (W) x 2345.4 mm (H) - with Base

*The specifications are subject to change without prior notice.

DIMENSIONS [Unit: mm]



***An additional 76.2mm of space is required behind the unit for wall mount bracket installation (mandatory).**