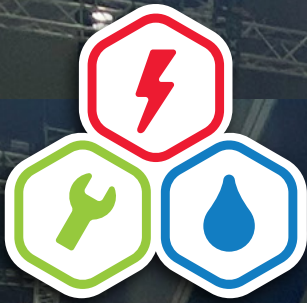


\*Some ADX specials are only valid until the end of the event on 22nd March 2025.



# presidential

April - June 2025

# Q2

## Specials

**BOOK A MEETING** during ADX BRISBANE week to...

Go into the draw to win a

**Insta360  
8k Action  
camera**

**valued at \$879.99**

Also receive pre-launch signup  
to exclusive ADX deals!

\*must schedule an appointment with one of  
our Equipment Specialists either in person,  
or via video call during ADX Brisbane '25 to  
be eligible for the bonus offer.



**See Presidential on the A-dec stand ADX Brisbane**

**ADX  
EXCLUSIVE  
BUNDLE  
DEALS!**  
See page 9

**EXISTING  
SURGERY  
REFRESH DEALS  
UNDER \$20K\*!**

**LEVERAGE  
END OF  
FINANCIAL  
YEAR TAX  
BENEFITS!**

**A-DEC  
10 YEAR  
WARRANTY ON  
ALL A-DEC PRO  
MODELS!!**



**Luke Williams**  
0421 493 876  
NSW/ACT/QLD



**Lee O'Bryan**  
0427 758 650  
Greater Sydney/QLD



**Michelle De Blasis**  
0422 391 596  
VIC/TAS/QLD



**presidential**  
dental | medical | veterinary





"Michelle De Blasis is the rep who we dealt with. She is professional and super efficient.

It made buying our A-dec chair a smooth operation, even with some changes such as refurbishing an existing chair and relocation. To put things into perspectives, a competitor company only got back to us regarding our A-dec chair purchase enquiry a few weeks after our chair (sold by Michelle of Presidential) was installed! Totally happy."

**Dr Cindy Nguyen**



"Incredible service from the very start by Michelle and Presidential Team. Michelle is exceptionally professional and organised and had all our orders in a timely manner. The servicing and installation team led by Lars and Darcy were fantastic at liaising with the builders directly and had everything installed and good to go without any hassle.

Highly recommend!"

**Dr Shrey Surya**



"I have had amazing service and quality workmanship from the whole service installation and sales team at Presidential!!! I had a compressor and suction break down and was unable to work, two technicians worked to get me up and running with dedication, knowledge, and great service!! They were amazing and I am very grateful and happy!! It's nice to know as dentists that patients can turn to us; and we too can turn to a team like this for excellent care!! Michelle from the sales team is very dedicated and committed to her job and definitely cares!! I totally recommend them to every dentist in Australia!!!"

**Dr Nicola Stephen**



"I wholeheartedly recommend Presidential as a dental supplier, and I cannot speak highly enough of Lee's exceptional professionalism, honesty, promptness and patience. Her expertise, dedication and unwavering support have been instrumental. I am grateful for her invaluable assistance and the outstanding service she has provided. Presidential and Lee have undoubtedly exceeded my expectations, and I am confident in their ability to deliver exceptional products and services to all their customers.

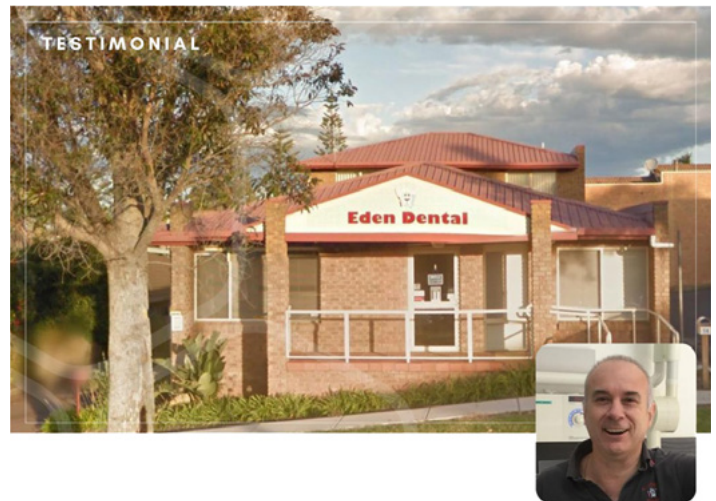
Thank you, Presidential, and a special thank you to Lee for your remarkable support!"

**Dr Ben Lee**



"We are using new Lisa VA-B and are very happy with the performance of the sterilizer and the customer service of Luke and Presidential Team."

**Dental Embassy**



"Luke Williams and his team at Presidential are a pleasure to deal with. From purchase to delivery and after sales support their customer service is next to none. I would highly recommend them to anyone looking to purchase equipment for their surgery."

**Dr Gabriel Maratheffis**



"I have been working with Presidential and A-dec for a number of years."

Presidential is always quick to get back to me, provides fantastic pricing and stays in regular contact. Presidential's service is always fantastic - from install to maintenance. My A-dec 500 chairs are completely reliable and provide outstanding comfort for my patients. If you are looking for new equipment contact Presidential and they will look after you!"

**Dr Mehdi Rahimi, Chatswood**



"Our surgery has been involved with many service companies over the years and Presidential has been the stand out from all the companies we have used before. The standard of service, prompt response and excellent sales service from Presidential is unprecedented. Thanks to Presidential Team!"

**Dr Jason Pireh, Kellyville**



## Durr Hygoclave 50 Steriliser Package

- Durr Hygoclave 50 22L Steriliser
- HygoPrint Easy Traceability Printer

**35% OFF**

**SAVE \$6,359.50**

RRP \$18,170  
SPECIAL PRICE:

**\$11,810.50**

*\*Image for illustration purposes only*



HYGOCLAVE 50+ (SYD)

## Vistascan Mini View 2.0

- Exceptional image quality thanks to PCS
- Latest generation of AI functions
- Vistascan smart reader – automated workflow
- Quick & easy scanning
- Large glass touch screen display
- Scan Manager – for efficient working
- Working without a PC is possible
- Easy to integrate into your network

**SAVE \$4,112**

RRP \$17,495  
SPECIAL PRICE:

**\$13,383**

*\*Image for illustration purposes only*



DURR VISTASCAN SHOWROOM (SYD)

## Durr VistaPano S

- Intuitive 7 inch touch display
- S-Pan technology extremely sharp images
- Total of 17 x-ray programs
- Streamlined footprint
- Up to 65% reduction in x-ray dose
- 4.1 Sec scan time – ceph
- Comfort bite for more stable images

**SAVE \$8,329**

RRP \$59,495  
SPECIAL PRICE:

**\$51,165**

*\*Image for illustration purposes only*



DURR VISTAPANO S SHOWROOM (SYD)

## Vistavox S With Ceph

- Jaw shaped field of view – 13 x 8
- Additional 10x 5 x 5 volumes in 1 scan
- Vistasoft – comes with AI features & optimised workflows with "single click" rule
- S-pan technology – extremely sharp images
- 1.9 Sec scan time – ceph
- Low x-ray dose!
- Includes PC, monitor & keyboard

**SAVE \$28,625**

RRP \$114,495  
SPECIAL PRICE:

**\$85,870**

*\*Image for illustration purposes only*



DURR VISTAVOX S CEPH SHOWROOM (SYD)

**PLEASE CALL 1800 773 743**  
TO BOOK YOUR SHOWROOM APPOINTMENT  
AT THE NEWCASTLE OR SYDNEY FACILITIES

**DEPOSIT ONLY!**  
**RESERVE NOW,**  
**PAY LATER.**



## A-DEC 300 Radius - Traditional

- A-dec 300 PRO Chair
- Headrest with DIAL adjustment
- SEWN Upholstery Set - COLOUR - ARUGULA
- Traditional Delivery System with CP5i Touchpad
- 2x 6-pin tubings, Fibre-optics module, NLZ Electric Motor
- Standard Size Stainless Steel Tray and Holder
- EMS Scaler Built-in kit - comes with module, cable, handpiece & 3x Tips
- 551STA Assistant Instrumentation with CP5 Touchpad and Single 3-pos suction arm
- 461C Spittoon with Support Centre
- 572L Dental LED light, chair mounted radius style
- 421/422 Doctor and Assistant operator Stools

**SAVE**  
**\$23,395**

RRP \$77,984  
SPECIAL PRICE:

**\$54,588**

*\*Image for illustration purposes only*



300 PRO RADIUS TRAD (SYD)

## A-DEC 400 Pro - Continental

- A-dec 400 PRO Chair
- Headrest with DIAL Adjustment
- SEWN Upholstery Set - COLOUR - APRICOT
- Continental Delivery System with CP5i Touchpad
- 2x 6-pin tubings, Fibre-optics module, NLZ Electric Motor
- Standard Size Stainless Steel Tray and Holder
- Acteon Newtron Scaler Built-in kit - comes with module, cable, handpiece & 3x Tips with Torque Wrenches
- 551STA Assistant Instrumentation with CP5 touchpad and Single 3-pos suction arm
- 461C Spittoon with Support Centre
- 572L Dental LED light, chair mounted radius style
- 421/422 Doctor and Assistant operator Stools

**SAVE**  
**\$25,719**

RRP \$85,733  
SPECIAL PRICE:

**\$60,013**

*\*Image for illustration purposes only*



400 PRO CONT (SYD)

## A-DEC 500 Pro - Traditional

- A-dec 500 PRO Chair
- Headrest with LEVER adjustment
- FORMED Upholstery Set - COLOUR - LEMONGRASS
- Traditional Delivery System with DS7 Touchpad
- 2x 6-pin tubings, Fibre-optics module, NLZ Electric Motor
- Standard Size Stainless Steel Tray and Holder
- Acteon Newtron Scaler Built-in kit - comes with module, cable, handpiece & 3x Tips with Torque Wrenches
- 551 STA Assistant Instrumentation with CP5 touchpad and Single 3-pos suction arm
- 482M Monitor Mount
- Neovo Medical Grade 22 inch Monitor Screen
- Support Link
- 572L/511B Dental LED light, chair mounted radius style
- 521/522/NBR Doctor and Assistant Operator Stools

**SAVE**  
**\$33,204**

RRP \$110,682  
SPECIAL PRICE:

**\$77,477**

*\*Image for illustration purposes only*



500 PRO TRAD (SYD)

## A-DEC 500 Pro - Continental

- A-dec 500 PRO Chair
- Headrest with LEVER adjustment
- SEWN Upholstery Set - COLOUR - VIVID PUNCH
- Continental Delivery System with DS7 Touchpad
- 2x 6-pin tubings, Fibre-optics module, NLZ Electric Motor
- Standard Size Stainless Steel Tray and Holder
- Acteon Newtron Scaler Built-in kit - comes with module, cable, handpiece & 3x Tips with Torque Wrenches
- 551 STA Assistant Instrumentation with CP5 touchpad and Single 3-pos suction arm
- Support Link
- 572L/511B Dental LED light, chair mounted radius style
- 521/522/NBR Doctor and Assistant Operator Stools

**SAVE**  
**\$33,143**

RRP \$110,479  
SPECIAL PRICE:

**\$77,335**

*\*Image for illustration purposes only*



500 PRO CONT (SYD)

**PLEASE CALL 1800 773 743**  
TO BOOK YOUR SHOWROOM APPOINTMENT  
AT THE NEWCASTLE OR SYDNEY FACILITIES

**DEPOSIT ONLY!**  
**RESERVE NOW,**  
**PAY LATER.**

## A-DEC 300 Pro on 500 - Traditional

- A-dec 500 PRO Chair
- Headrest with LEVER Adjustment
- FORMED Upholstery Set - COLOUR - SKY BLUE
- Traditional Delivery System with CP5i Touchpad, and Unit Mount Arm
- 2x 6-pin tubings, Fibre-optics module, NLZ Electric Motor
- Standard Size, Stainless Steel Tray Holder (excludes tray)
- A-dec+ Gateway kit
- Acteon Newtron Scaler Built-in kit - comes with module, cable, handpiece & 3x Tips with Torque Wrenches
- 551STA Assistant Instrumentation with CP5 touchpad and Single 3-pos suction arm
- Support Link (without spittoon)
- 572L/511B Dental LED light, chair mounted radius style
- 521/522/NBR Doctor and Assistant operator Stools, (DA stool without backrest)

**SAVE**  
**\$27,339**

RRP \$91,130  
SPECIAL PRICE:

**\$63,791**

*\*Image for illustration purposes only*



300 PRO ON 500 TRAD (VIC)

## A-DEC 400 Pro - Continental

- A-dec 400 PRO Chair
- Headrest with LEVER Adjustment
- SEWN Upholstery Set - COLOUR - APRICOT
- Continental Delivery System with CP5i Touchpad
- 2x 6-pin tubings, Fibre-optics module, NLZ Electric Motor
- Standard Size Stainless Steel Tray and Holder
- A-dec+ Gateway Kit
- Acteon Newtron Scaler Built-in kit - comes with module, cable, handpiece & 3x Tips with Torque Wrenches
- 551STA Assistant Instrumentation with CP5 touchpad and Single 3-pos suction arm
- 461C Spittoon with Support Centre
- 572L Dental LED light, chair mounted radius style
- 421/422 Doctor and Assistant operator Stools

**SAVE**  
**\$29,190**

RRP \$97,302  
SPECIAL PRICE:

**\$68,111**

*\*Image for illustration purposes only*



400 PRO CONT (VIC)

## A-DEC 300 Intro Pkg - Traditional

- A-dec 300 PRO Chair
- Headrest with DIAL Adjustment
- FORMED Upholstery Set - COLOUR - SAPPHIRE
- Traditional Delivery System with CP5i Touchpad, 3-Position Block
- 1x 6-pin tubing, Fibre-optics module, No motor (Requires air motor)
- Standard Size Stainless Steel Tray and Holder
- Acteon Newtron Scaler Built-in kit - comes with module, cable, handpiece & 3x Tips with Torque Wrenches
- 351 Assistant Instrumentation with STD touchpad and Single 3-pos suction arm
- 372L Dental LED light, chair mounted radius style
- 421/422 Doctor and Assistant operator Stools

**SAVE**  
**\$16,572**

RRP \$55,242  
SPECIAL PRICE:

**\$38,669**

*\*Image for illustration purposes only*



300 INTRO TRAD (VIC)

## Durr VistaIntra - Wall-Mounted X-ray

- Fast, High-quality Image Results
- DC Technology for Minimised Radiation Dosage
- Digital Timer
- Easy Operation, Highly Ergonomic
- Long arm = Maximum Working Length - 2260mm

### Medium Arm

**SAVE**  
**\$3,149**

RRP \$7,645  
SPECIAL PRICE:

**\$4,495**

*\*Image for illustration purposes only*



### Long Arm

**SAVE**  
**\$1,453**

RRP \$7,645  
SPECIAL PRICE:

**\$6,192**

**\*Refurbished - additional discounts apply!**

VISTA INTRA- MEDIUM & LONG ARMS (SYD)

**PLEASE CALL 1800 773 743**  
TO BOOK YOUR SHOWROOM APPOINTMENT  
AT THE NEWCASTLE OR SYDNEY FACILITIES

**DEPOSIT ONLY!**  
**RESERVE NOW,**  
**PAY LATER.**



### Vatech A9

- Field of View 8x8
- Magic PAN
- 5 years warranty

**20% OFF**



*\*Image for illustration purposes only*

### Vatech Green X 12 with CEPH ARM

- Smart Focus – 1 Scan, 5 Images
- Pano/Ceph/3D CBCT/ Model Scan
- Multi FOV Selection
- Endo Mode with 0.05mm High Definition!
- 41 Layers Panoramic Images
- 10 years Warranty

**20% OFF**



*\*Image for illustration purposes only*

### Vatech EzRay Air Wall 450 Arm (short)

- Smart angulation for optimal results
- Intuitive & convenient operating panel
- One dial for all functions
- Lightweight tube head for stable and safe use
- Short Arm – ideal for compact rooms
- 2 years Warranty



*\*Image for illustration purposes only*

### Vatech VSP - Phosphor Plate Scanner

- Compact footprint, chairside diagnosis
- Fast scanning time
- 4 inch LED touch screen
- Image resolution: 20 line pair per mm
- In-built memory store up to 500 images
- 2 years Warranty



*\*Image for illustration purposes only*

**PLEASE CALL 1800 773 743**  
TO BOOK YOUR SHOWROOM APPOINTMENT  
AT THE NEWCASTLE OR SYDNEY FACILITIES

**DEPOSIT ONLY!**  
**RESERVE NOW,**  
**PAY LATER.**

Showroom Offers! Limited Stock! • Showroom Offers! Limited Stock! • Showroom Offers! Limited Stock!

## FormLabs Package

- Form3B+ - Advanced Desktop 3D Printer
- FormWash - IPA Wash unit
- FormCure - Automated Post-Curing



FORMLABS PKGS SHOWROOM (QLD & VIC)

**SAVE**  
**\$3,249**

RRP \$10,834  
SPECIAL PRICE:

**\$7,584**

*\*Image for illustration purposes only*

## Durr Hygoclave 50 Steriliser Package

- Durr Hygoclave 50 22L Steriliser
- HygoPrint Easy Traceability Printer



DURR HYGO50+ SHOWROOM (VIC)

**SAVE**  
**\$4,842**

RRP \$18,170  
SPECIAL PRICE:

**\$13,328**

*\*Image for illustration purposes only*

## Melag 43B+ Steriliser

- Melag 43B+ 23L Steriliser
- Includes MelaFlash Cycle datalogger



MELAG PREMIUM 43B+ SHOWROOM (VIC)

**SAVE**  
**\$4,529**

RRP \$22,645  
SPECIAL PRICE:

**\$18,116**

*\*Image for illustration purposes only*

## PSPIX - Phosphor Plate Digital X-ray Scanner

- Most compact phosphor plate scanner on the market - ideal for chairside x-ray scanning
- Comes with 2x Size 1 and 2x Size 2 image plates
- Standard or High definition modes
- Networks up to 10 surgery rooms
- Quick Scanning times



PSPIX SHOWROOM (VIC)

**SAVE**  
**\$3,146**

RRP \$15,730  
SPECIAL PRICE:

**\$12,584**

*\*Image for illustration purposes only*

**PLEASE CALL 1800 773 743**  
TO BOOK YOUR SHOWROOM APPOINTMENT  
AT THE NEWCASTLE OR SYDNEY FACILITIES

**DEPOSIT ONLY!**  
**RESERVE NOW,**  
**PAY LATER.**



# ADX Brisbane 2025 Bundle Deals

## BUY 500 PRO CHAIR PKG\*



RECEIVE FREE  
HYGOCLAVE  
40 PLUS  
(SAVE \$15,812!!)



RECEIVE FREE 6L  
ULTRASONIC BATH  
(SAVE \$2,359!!)



RECEIVE FREE  
HYGOPRINT EASY  
(SAVE \$1,586!!)



RECEIVE  
\$500 OFF DURR  
VISTA-INTRA X-RAY  
(SAVE \$500!!)

**TOTAL SAVINGS = \$20,257 + MASSIVE ADDITIONAL DISCOUNTS OFF CHAIR PKG!!**

## BUY 400 PRO CHAIR PKG\*



RECEIVE FREE  
HYGOCLAVE  
40 PLUS  
(SAVE \$15,812!!)



RECEIVE FREE  
HIGH SPEED NSK OR  
W&H COUPLING  
(SAVE UP TO \$552!!)



RECEIVE FREE  
HYGOPRINT EASY  
(SAVE \$1,586!!)



RECEIVE  
\$500 OFF DURR  
VISTA-INTRA X-RAY  
(SAVE \$500!!)

**SAVING UP TO = \$18,450 + MASSIVE ADDITIONAL DISCOUNTS OFF CHAIR PKG!!**

## BUY 300 PRO CHAIR PKG\*



RECEIVE FREE  
HYGOCLAVE  
40 PLUS  
(SAVE \$15,812!!)



RECEIVE  
\$500 OFF DURR  
VISTA-INTRA X-RAY  
(SAVE \$500!!)



RECEIVE FREE  
HYGOPRINT EASY  
(SAVE \$1,586!!)

**SAVING UP TO = \$17,898 + MASSIVE ADDITIONAL DISCOUNTS OFF CHAIR PKG!!**

# THERE'S NEVER BEEN A BETTER TIME TO EXPERIENCE & **SAVE ON A-DEC**



## A-DEC 400

**\$45,239**

Save up to  
**\$24,892!!**

### PACKAGE INCLUDES:

- A-dec 400 chair with standard headrest
- Sewn Upholstery FUSCHIA
- Knob headrest
- A-dec 300 Traditional delivery
- Without Spittoon
- 521/522 Stools
- NLZ electric motor
- 551 Assistants instrumentation
- A-dec 500 LED light

**PROMO  
APPLIES TO  
CLEARANCE  
STOCK**





## A-dec 300 Radius – Traditional

- A-dec 300 Radius chair with Knob headrest
- Seamless/FORMED Upholstery – SKY BLUE colour
- Traditional delivery system with fibre-optics module, Fibre-optic high speed line, Slow speed line with fibre-optic NLZ electric motor, Deluxe touchpad, Standard size tray and holder
- Satelec Newtron scaler built-in kit with 3x scaler tips
- Assistant Suction and Instrumentation
- EP valve and adaptor
- Cuspidor and Support centre
- 572L Radius-style LED dental light
- 421/422 Doctor and Assistant stools

**PURCHASE  
A-DEC 300  
AT 2022 PRICES!  
- WHILE STOCKS  
LAST!**



**SAVE  
\$14,399**

RRP \$57,596  
SPECIAL PRICE:

**\$43,197**

*\*Image for illustration purposes only*

**ORDER  
NOW FOR NEXT  
SHOWROOM  
PACKAGE  
RELEASE**

**PLEASE CALL 1800 773 743**  
TO BOOK YOUR SHOWROOM APPOINTMENT  
AT THE NEWCASTLE OR SYDNEY FACILITIES

# MASSIVE STOCK CLEARANCE SALE!


\*Prices slashed on existing stock – while stock lasts. \*All Clearance items must be paid in full to secure the order. \*Clearance offers can not be combined with any other package offers. \*Some items are display stock from our showroom. These come with full warranty term starting from date of sale to customer.

## IMAGING EQUIPMENT












	<b>Vatech EZRAY Air W 600</b> \$6,000 <b>SAVE \$1,200!!</b>
	<b>Vatech VSP</b> \$9,000 <b>SAVE \$1,890!!</b>
	<b>ScanX Edge</b> \$7,530 <b>SAVE \$3,633!!</b>
	<b>ScanX Duo Touch</b> \$15,000 <b>SAVE \$5,449!!</b>
	<b>SoproLife intra-oral camera</b> (comes with dock**) \$4,529 <b>SAVE \$5,449!!</b>
	<b>SoproCare intra-oral camera</b> (comes with dock*) \$4,529 <b>SAVE \$5,449!!</b>
	<b>Sopro717 intra-oral camera</b> (comes with dock**) \$3,558 <b>SAVE \$899!!</b>
	<b>Sopr617 intra-oral camera</b> (comes with dock***) \$2,096 <b>SAVE \$524!!</b>
	<b>ProVecta HD intra-oral X-ray</b> \$6,976 <b>SAVE \$4650!!</b>

\*\*Dock type supplied to be based on stock availability – either direct dock, or mini dock

## AIR MOTORS

	<b>AM-25 RM</b> \$634 <b>SAVE \$271!!</b>
	<b>AM-25 LRM</b> \$1,273 <b>SAVE \$848!!</b>
	<b>AM-25 LT</b> \$1,495 <b>SAVE \$641!!</b>

## HANDPIECES

	<b>TK-98 LM</b> \$1,490 <b>SAVE \$993!!</b>
	<b>TG-98 LN</b> \$976.80 <b>SAVE \$651.20!!</b>
	<b>RK-97 L</b> \$1,618.80 <b>SAVE \$1,079.20</b>
	<b>TK-98 L</b> \$1,480.80 <b>SAVE \$987.20!!</b>
	<b>WP-64 M</b> \$430.20 <b>SAVE \$286.80!!</b>
	<b>WK-56 LTS</b> \$1,102.80 <b>SAVE \$735.20!!</b>
	<b>WK-56 LT</b> \$1,102.80 <b>SAVE \$735.20!!</b>
	<b>WG-99 A</b> \$1,039.80 <b>SAVE \$693.20!!</b>
	<b>WE-56 LED G</b> \$672 <b>SAVE \$448!!</b>
	<b>TE-98 LM</b> \$975.60 <b>SAVE \$650.40!!</b>
	<b>S-11 Surgical Straight Handpiece</b> \$1,192 <b>SAVE \$511!!</b>

**Ask us about stock A-dec Upholstery sets at massive discounts!**



# ADX BRISBANE 2025

## EXCLUSIVE OFFERS



PROMO CODE : ADXBRIS25

### Handpieces & Motors

- 35% off Ti-Max Z & S-Max Handpieces
- 35% off Ti-Max X & Nano Handpieces
- 35% off Ti-Max & S-Max Air Motors
- 35% off NLZ & NLZ-E Electric Motors
- 20% off EX & FX Series Handpieces
- 20% off Pico Burs

### Oral Hygiene

- Varios Combi Pro Bundle + free iCart V
- 35% off Varios Combi Pro Basic Set
- 35% off VCP Perio-Kit
- 35% off iCartV
- 35% off Prophy-Mate Neo & Perio-Mate
- 35% off Varios 970/1 70 Ultrasonic units
- 35% off Ti-Max S970 Air Scalers
- 20% off Varios2 Scaler Handpieces
- 20% off All Scaler Tips & Powders

### Surgical

- Surgic Pro2 Get Free Osseo 1 00 +
- 35% off Surgic Pro1 & VarioSurg3 units
- 35% off Surgical Handpieces
- 35% off ISD900 & Osseo1 00
- 20% off MultiPegs
- 20% off Surgical Tips, Components & Consumables

### Lab, Endo, Mobile & Maintenance

- 35% off all Ultimate XL & Volvere i7
- 35% off Endo Mate DT2/TC2/AT & iPexII
- 35% off iCare C2 & C3 units
- 20% off iClave Autoclave
- 20% off Dentalone & VIVA ace
- 20% off Lab, Endo, Mobile & Maintenance Components & Consumables

### Terms & Conditions

- Offers are as listed, Excludes Ti Max Z2 (Launch price released at pre show)
- All orders must include the Promo Code: ADXBRIS25 to receive listed offers.
- Discounts are offered off RRP.
- Offers are available exclusively from the 20th to the 22nd of March 2025.
- Offers are not to be used in conjunction with any other NSK Promotion.
- Spare parts are excluded from all ADX Promotional Offers.
- Orders will be accepted until COB Wednesday 26th March, 2025

# NSK Create it Booth #203

## ADX 2025

### CONFERENCE OFFERS

VISIT OUR ADX  
SUPPLY  
PARTNERS FOR  
ADDITIONAL  
PRICING!

## Ti-Max Handpieces



MODEL Ti-Max Z990L **NEW!**  
ORDER CODE PA23730001

- Standard Head
- 44W\*
- 2-year warranty

RRP \$1,981

**Sale Price**  
**\$1,386**



MODEL Ti-Max Z890L **NEW!**  
ORDER CODE PA23720001

- Miniature Head
- 41W\*
- 2-year warranty

RRP \$1,981

**Sale Price**  
**\$1,386**



MODEL Ti-Max ZMicro **NEW!**  
ORDER CODE PA2357

- Micro Head
- 20W
- 2-year warranty

RRP \$1381

**Sale Price**  
**\$967**



MODEL Ti-Max X450L  
ORDER CODE P1078

- Rear Exhausting Head
- 21W
- 2-year warranty

RRP \$1677

**Sale Price**  
**\$1,174**



MODEL Ti-Max Z95L  
ORDER CODE C1034SW

- Mist or Jet Spray Switch
- 1:5 Increasing
- 3-year Warranty

RRP \$2121

**Sale Price**  
**\$1,485**



MODEL Ti-Max Z25L  
ORDER CODE C1038

- Single Water Spray
- 1:1 Direct Drive
- 2-year Warranty

RRP \$1491

**Sale Price**  
**\$1,044**



MODEL Ti-Max Z24L  
ORDER CODE C1126001

- Miniature Head
- Single Water Spray
- 2-year warranty

RRP \$1491

**Sale Price**  
**\$1,044**



MODEL Ti-Max Z45L  
ORDER CODE C1064

- Mist or Jet Spray Switch
- 1:4.2 Increasing
- 2-year warranty

RRP \$2263

**Sale Price**  
**\$1,584**

## S-Max Handpieces

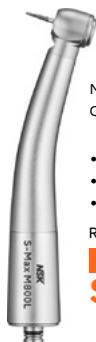


MODEL S-Max M900L  
ORDER CODE P1254

- Standard Head
- 26W
- 1-year warranty

RRP \$1381

**Sale Price**  
**\$967**



MODEL S-Max M800L  
ORDER CODE P1253

- Miniature Head
- 23W
- 1-year warranty

RRP \$1381

**Sale Price**  
**\$967**



MODEL S-Max Pico  
ORDER CODE P1140

- Micro Head
- 9W
- 1-year warranty

RRP \$1381

**Sale Price**  
**\$967**



MODEL S-Max M95L  
ORDER CODE C1023

- Quattro Spray
- 1:5 Increasing
- 1-year Warranty

RRP \$1763

**Sale Price**  
**\$1,234**



MODEL S-Max M25L  
ORDER CODE C1024

- Single Water Spray
- 1:1 Direct Drive
- 1-year Warranty

RRP \$1353

**Sale Price**  
**\$947**



MODEL S-Max M25  
ORDER CODE C1027

- Non-Optic
- Single Water Spray
- 1-year warranty

RRP \$949

**Sale Price**  
**\$664**

### SPECIAL OFFER

Ti-Max  
Z990 Z890 Z Micro  
High-Speeds

**Buy 2\* Get 1 FREE**



\*At RRP

OTHER HIGH-SPEED CONNECTIONS AVAILABLE  
FOR KAVO, W&H, SIRONA, BIEN-AIR.

OTHER CONNECTION OPTIC PRICING

- Ti-Max Z990/Z890 • RRP \$2074 - SALE PRICE \$1452
- Ti-Max Z Micro • RRP \$1591 - SALE PRICE \$1114
- S-Max M & Pico • RRP \$1591 - SALE PRICE \$1114



## iCare

NSK's iCare simplifies the maintenance of dental handpieces. Automatically lubricate up to four handpieces simultaneously, ensuring optimal performance with minimal effort. Compact and stylish, the iCare fits seamlessly into any dental practice, with easy setup and maintenance. Available in 2 configurations and adaptable to various handpieces, the iCare is a versatile and essential unit to increase the lifespan of your handpieces.

### Specifications

• Power Supply AC 100-240 V 50/60Hz • Air Pressure 0.5-0.6 MPa (5.0-6.0 kgf/cm<sup>2</sup>) • Weight 6.5 kg (C2 Type / C3 Type) • Dimension W 280 x D 240 x H 350 mm • Solution Tank Capacity 1.2 L

### Contents

• iCare Unit • Power Cord • Chuck Lubrication Nozzle • Maintenance Oil for iCare (1 Litre) • Mist Filter Set • Oil Absorber Sheet • Air Tube  
\* Connects only to Midwest 4-hole type  
• \* Air piping is necessary (5.0-6.0 kgf/cm<sup>2</sup>)



MODEL **iCare C2**

ORDER CODE Y1002787

RRP \$5489

SALE PRICE **\$3,842**

MODEL **iCare C3**

ORDER CODE Y1002788

RRP \$5863

SALE PRICE **\$4,104**



## PANA SPRAY Plus

PANA SPRAY Plus is a specially formulated, highly effective general handpiece and air motor lubricant. Frequent application of PANA SPRAY Plus will assure handpiece and air motor performance and durability. Apply PANA SPRAY Plus every time before autoclaving any handpiece or air motor.

- For High & Low speed handpieces, and air motors Alcohol-contained lubricant Contains 480 mL each

MODEL **PANA SPRAY Plus (Box of 6)**

ORDER CODE Y900630G

RRP \$269

SALE PRICE **\$229**



## iClave 24 **NEW!**

\*Available through selected authorised suppliers.

Introducing the iClave 24, a next-generation autoclave that redefines the sterilisation process with unmatched efficiency, technology, and ease of use. Designed with a spacious 24-litre stainless steel chamber and a 5-tray system, it offers optimised load capacity and rapid, Class B and Class S cycles for perfect sterilisation every time. Equipped with a high-efficiency steam generator, internal ventilation, and a user-friendly 4.3" touchscreen, the iClave 24 ensures a fast, safe, and practical experience for every dental professional. From its ergonomic design to its advanced water management system and comprehensive data traceability options, iClave 24 combines NSK's renowned quality with a comfortable and effective solution for all your sterilisation needs.

- External Dimensions: W 451 x H 492 x D 669 mm
- Chamber Dimensions: Φ 265 x 475 mm
- Chamber Capacity: 24 L
- Net Weight: 55 kg
- Supply Voltage: CE 230 V - 50/60Hz
- Maximum Power Consumption: 2,350 W
- Cycle Water Consumption: 700 ~ 800 cc\*
- Tank Capacity (clean and used water): 5 litres each
- Sound Level: 60 dB(A)

\*Water consumption varies depending on device operating conditions (e.g., chamber temperature, cycle selected, etc.).

MODEL **iClave24 with Printer**

ORDER CODE 92412B0100P

RRP \$13,970

LAUNCH OFFER **\$12,573**

MODEL **iClave24 without Printer**

ORDER CODE 92412B0100

RRP \$13,640

LAUNCH OFFER **\$12,276**



**NSK** Create it

\*Contact NSK for a list of selected authorised suppliers.

Available for the duration of the ADX Conference 2025. Not to be used in conjunction with any other NSK promotions. All prices are as quoted in AUD and include GST.

**NSK** Create it

# Endodontics



## Endodontic Handpieces



MODEL **NLZ Endo**  
ORDER CODE **C1130**

- Non-Optic
- 6:1 Reduction
- Rotational files

RRP \$893

**Sale Price**  
**\$625**



MODEL **FX75m**  
ORDER CODE **C1055001**

- Non-Optic
- 16:1 Reduction
- Rotational files

RRP \$788

**Sale Price**  
**\$670**



MODEL **MP-F16R**  
ORDER CODE **Y110096**

- Fits ENDO-MATE Systems
- 16:1 Reduction
- Rotational files

RRP \$763

**Sale Price**  
**\$649**



MODEL **MP-F20R**  
ORDER CODE **Y110044**

- Fits ENDO-MATE Systems
- 20:1 Reduction
- Rotational files

RRP \$763

**Sale Price**  
**\$649**



MODEL **MPAS-F20R**  
ORDER CODE **Y110046**

- Fits ENDO-MATE Systems
- Apex Locator Connection
- 20:1 Reduction
- Rotational files

RRP \$1043

**Sale Price**  
**\$887**



MODEL **MPAS-F16R**  
ORDER CODE **Y110098**

- Fits ENDO-MATE Systems
- Apex Locator Connection
- 16:1 Reduction
- Rotational files

RRP \$1043

**Sale Price**  
**\$887**



MODEL **MPA-F20R**  
ORDER CODE **Y110045**

- Fits ENDO-MATE Systems
- Apex Locator Connection
- 20:1 Reduction
- Rotational files

RRP \$1043

**Sale Price**  
**\$887**



MODEL **MPA-F16R**  
ORDER CODE **Y110097**

- Fits ENDO-MATE Systems
- Apex Locator Connection
- 16:1 Reduction
- Rotational files

RRP \$1043

**Sale Price**  
**\$887**

## iPexII

The Advanced Apex Locator features NSK's SmartLogic technology, providing precise root apex detection across various tooth forms. It accurately displays the file tip's location on its LCD panel, based on extensive clinical trials, ensuring reliable endodontic measurements.

### Contents

- Control Unit • iPexII Probe (1.8 m) • iPexII File Clip (3 pcs.) • Lip Hook (3 pcs.)
- AAA Manganese Dry Batteries (3 pcs.) • iPexII Tester

MODEL **iPexII**  
ORDER CODE **Y1002208**  
RRP \$1696

**Sale Price**  
**\$1,187**



Available for the duration of the ADX Conference 2025. Not to be used in conjunction with any other NSK promotions. All prices are as quoted in AUD and include GST.



## ENDO-MATE DT2

The ENDO-MATE DT2, compatible with major Ni-Ti file brands, features a pre-programming function for efficient use of various file protocols. A lightweight, compact control unit with a rechargeable battery for enhanced mobility. The slim, lightweight handpiece ensures comfortable handling and high performance.

### Contents

- Control unit •Motor and cord •MP-F20R head (20:1)
- Handpiece stand •AC adaptor

### Specifications

- Power Supply 230V 50/60 Hz and Battery pack
- Number of Programs 9
- Max Torque 7 Ncm (when using 20:1 head)
- Speed range 100-13,000 min-1 (With 20:1, 1:1 geared heads)
- Charge/Continuous use 5 h / 2 h (depending on workload)
- Dimensions W 93 x D 147 x H 100 (mm)
- Weight Unit 440 g / Motor handpiece and Cord 95 g

MODEL **Endo-Mate DT2**

ORDER CODE Y1004230

RRP \$2,348

**SALE PRICE \$1,644**



## ENDO-MATE TC2

The Cordless ENDO-MATE TC2 Endodontic Handpiece enhances safety and efficiency with advanced torque control, auto-reverse, and a slim design for improved visibility. It features programmable settings, dual alarm sounds, and compatibility with most Ni-Ti files. An integrated LCD panel and the ability to combine with an Apex locator facilitate precise treatments. The device includes a quick 90-minute non-contact charger for fast recharging.

### Contents

- ENDO-MATE TC2: •MP-F16R Head •ENDO-MATE TC2 Motor •Battery Charger
- ENDO-MATE TC2 MPA : •MPA-F16R Head •ENDO-MATE TC2 Motor •Battery Charger

### Specifications

- Power Supply 230V 50/60 Hz and Battery pack
- Number of Programs 9
- Max Torque 7 Ncm (when using 20:1 head)
- Speed range 100-13,000 min-1 (With 20:1, 1:1 geared heads)
- Charge/Continuous use 5 h / 2 h (depending on workload)
- Dimensions W 93 x D 147 x H 100 (mm)
- Weight Unit 440 g / Motor handpiece and Cord 95 g

MODEL **Endo-Mate TC2**

ORDER CODE Y1001027

RRP \$2263

**SALE PRICE \$1,584**

MODEL **Endo-Mate TC2 with MPA**

ORDER CODE Y1001028

RRP \$2716

**SALE PRICE \$1,901**



## NLZ-E

NSK's "NLZ-E" system offers a seamless transition from air-driven to electric handpieces, enhancing safety and flexibility in dental practices. Featuring an advanced micromotor technology, the NLZ-E broadens the scope of dental treatments with its innovative design tailored for rotational and reciprocating endodontic applications. This system ensures improved comfort and safety, requiring only a minimal update to existing office equipment to significantly upgrade the treatment environment.

### Contents

- NLZ E U (Control Unit & Main Unit) •NE180 (AC Adaptor)
- NLZ (Motor) •NLZ CD (Motor Cord) •NLZ U Bracket

### Specifications

- Dimension Control Unit W 76 x D 87.1 x H 63.4 mm
- Dimension Main Unit W 146 x D 75 x H 48 mm
- Power Supply 230 V 50/60 Hz\*
- Programs General Application Mode / 6 Programs Rotary Endo Mode / 6 Programs
- Endodontics Torque 0.3-6.0 Ncm (Depending on Gear Ratio)
- Motor Speed 100-40,000 min-1

MODEL **NLZ-E**

ORDER CODE Y1500361

RRP \$5942

**SALE PRICE \$4,159**



**NSK Create it**

Available for the duration of the ADX Conference 2025. Not to be used in conjunction with any other NSK promotions. All prices are as quoted in AUD and include GST.

## NSK Create it

# Surgical



## Surgical Handpieces



MODEL **Ti-Max X-SG20L**  
ORDER CODE **C1003**

- Optic
- 20:1 Reduction
- CA Burs

RRP \$2720

Sale Price

**\$1,904**



MODEL **S-Max SG20**  
ORDER CODE **C1010**

- Non-Optic
- 20:1 Reduction
- CA Burs

RRP \$1,657

Sale Price

**\$1,160**



MODEL **Ti-Max Z-SG45L**  
ORDER CODE **C1107**

- Optic
- 1:3 Increasing
- 25mm FG Burs

RRP \$2221

Sale Price

**\$1,555**



MODEL **Ti-Max X-SG65L**  
ORDER CODE **H1009**

- Optic
- 1:1 Direct Drive
- HP Burs

RRP \$2371

Sale Price

**\$1,660**



MODEL **SGA-ES**  
ORDER CODE **H263**

- Non-Optic
- 1:1 Direct Drive
- 65mm HP Burs

RRP \$2107

Sale Price

**\$1,475**



MODEL **SGA-E2S**  
ORDER CODE **H265**

- Non-Optic
- 1:2 Increasing
- 65mm HP Burs

RRP \$2472

Sale Price

**\$1,730**



MODEL **SGS-ES**  
ORDER CODE **H264**

- Non-Optic
- 1:1 Direct Drive
- 65mm HP Burs

RRP \$1520

Sale Price

**\$1,064**



MODEL **SGS-E2S**  
ORDER CODE **H266**

- Non-Optic
- 1:2 Increasing
- 65mm HP Burs

RRP \$1782

Sale Price

**\$1,247**



MODEL **SGX-E20R**  
ORDER CODE **HA1200**

- Non-Optic
- 20:1 Reduction
- CA Burs

RRP \$3080

Sale Price

**\$2,156**



## iSD900

The iSD900 cordless prosthodontic screwdriver features a Torque Calibration System (TCS) for precise control during screw fixing procedures. Designed for easy use, ensuring precise and risk-free screw tightening, which enhances both safety and productivity in clinical settings.

### Contents

- iSD900 Motor
- iSD-HP
- Quick Charger for iSD900
- Torque Calibrator
- On/Off Switch Lever

MODEL **iSD900**

ORDER CODE Y1001358

RRP \$3604

SALE PRICE

**\$2,523**



## Osseo 100+

The Osseo 100 device measures implant stability and osseointegration, facilitating timely decisions on implant loading. Ideal for shorter treatment schedules or high-risk patients. The non-invasive ISQ measurement process aids in planning the implant loading period to minimize failure risks. Links with Surgic Pro2

### Contents

- Osseo 100+ Instrument
- MultiPeg Driver
- Mains adapter and plugs

MODEL **Osseo100+**

ORDER CODE Y1004176

RRP \$3806

SALE PRICE

**\$2,664**

MODEL **Osseo100**

ORDER CODE Y1004175

RRP \$3267

SALE PRICE

**\$2,287**

MultiPegs sold separately

Available for the duration of the ADX Conference 2025. Not to be used in conjunction with any other NSK promotions. All prices are as quoted in AUD and include GST.



## VarioSurg4 **NEW!**

the VarioSurg 4 delivers enhanced precision, efficiency, and control. With advanced Burst Mode for optimised bone cutting, a super-slim ergonomic handpiece, and seamless wireless integration with Surgic Pro2. Upgraded lighting, a quieter irrigation pump, and an intuitive control panel ensure smoother, more efficient procedures.

### Contents

- Control Unit • LED Handpiece with 2m cord • FOOT CONTROL WIRELESS I • Sterilisation Cassette • Handpiece Stand • Irrigation tube (5 pcs.) and other accessories • Basic H-S Kit (H-SG1, SG3, SG5 SG6D, SG7D, SG11 and Tip holder)

MODEL **VarioSurg4 complete set W/O foot control**

ORDER CODE Y1500769

RRP \$10,060

MODEL **VarioSurg4 complete set**

ORDER CODE Y1500768

RRP \$12,468



## Surgic Pro2

The Surgic Pro2 improves operability, safety, and connectivity. It features a wireless foot control, Advanced Handpiece Calibration for precise torque settings and integrates with the Osseo 100+ device for real-time, contactless monitoring of implant stability via Bluetooth.

### Contents

- Control Unit • Micromotor • 20:1 Reduction Handpiece • FOOT CONTROL WIRELESS • Irrigation tube (pack of 3) and other accessories

MODEL **Surgic Pro2 OPTIC**

ORDER CODE Y1500511

RRP \$8,726

**SALE PRICE \$6,108**

MODEL **Surgic Pro NON-OPTIC**

ORDER CODE Y1500512

RRP \$7,479

**SALE PRICE \$5,235**



## SPECIAL OFFER

Buy a VarioSurg 4 Complete Set



Get **FREE** Additional Cable



Worth \$5517!!

## VarioSurg Tip Kits

MODEL **Sinus Lift Kit**

- Tip Holder • SG1, SG3, SG6D, SG9, SG10, SG11

ORDER CODE **Y900689**

RRP \$2096

**SALE PRICE \$1,782**

MODEL **Basic H-S Kit**

- Tip Holder • H-SG1, SG3, SG5, SG6D, SG7D, SG11

ORDER CODE **Y1002775**

RRP \$2183

**SALE PRICE \$1,856**



## Surgic Pro & VarioSurg Cables

MODEL ORDER CODE

SALE PRICE

**VS4-LED-HPSC** EA14170001

Optic scaler  
with 2m cord for VarioSurg4

**\$4,689**

RRP \$5517

**VS3-LED-HPSC** E1133

Optic scaler  
with 2m cord for VarioSurg3

**\$4,689**

RRP \$5517

**SGL70M** E1023001

Optic micromotor  
with 2m cord for Surgic Pro

**\$3,794**

RRP \$4464

**SG70M** E1025001

Non-Optic micromotor  
with 2m cord for Surgic Pro

**\$3,016**

RRP \$3548

**SGL80M** Y1004211

Optic micromotor  
with 2m cord for Surgic Pro2

**\$3,794**

RRP \$4464

**SG80M** Y1004212

Non-Optic micromotor  
with 2m cord for Surgic Pro2

**\$3,016**

RRP \$3548



## iCart Duo

The NSK iCart Duo holds both the VarioSurg & Surgic Pro units. Height adjustable and portable.

MODEL **iCart Duo**

ORDER CODE S9090

RRP \$2536

SALE PRICE

**\$2,155**



Available for the duration of the ADX Conference 2025. Not to be used in conjunction with any other NSK promotions. All prices are as quoted in AUD and include GST.

**NSK** Create it

# Oral Hygiene



## Prophy Handpieces



MODEL **FX57m**  
ORDER CODE **C1054001**

- Non-Optic
- 4:1 Reduction
- Screw in cups

RRP \$508

**Sale Price**  
**\$432**



MODEL **FX25m**  
ORDER CODE **C1052001**

- Non-optic
- 1:1 Direct Drive
- Push Button CA burs

RRP \$462

**Sale Price**  
**\$393**



MODEL **Ti-Max X57L**  
ORDER CODE **C609**

- Optic
- 16:1 Reduction
- Screw in cups

RRP \$1601

**Sale Price**  
**\$1,121**



MODEL **Ti-Max X55L**  
ORDER CODE **C608**

- Optic
- 4:1 Reduction
- IPR Profin/Eva Tips

RRP \$2017

**Sale Price**  
**\$1,412**



MODEL **EC-30M**  
ORDER CODE **C100007**

- Non-Optic
- 1:1 Direct Drive
- Contra-Angle Shank

RRP \$190

**Sale Price**  
**\$162**



MODEL **ER4M**  
ORDER CODE **C634002**

- Non-Optic
- 4:1 Reduction
- Contra-Angle Shank

RRP \$396

**Sale Price**  
**\$337**



MODEL **ARY (S)**  
ORDER CODE **C187**

- Non-optic
- Max Speed 5,000 min
- Screw-in cups

RRP \$113

**Sale Price**  
**\$96**



MODEL **NAC (Y)**  
ORDER CODE **C032**

- Non-optic
- Max Speed 10,000 min
- Latch type CA burs

RRP \$126

**Sale Price**  
**\$107**

## Prophy-Mate Neo

### Supra-gingival Air Polishing

Prophy-Mate is used in the treatment of plaque and stain removal.

- For use with FLASH pearl & SOFT pearl Powders



MODEL **PMNG-PTL-P**

ORDER CODE **Y135029**

RRP \$1696

**Sale Price**  
**\$1,187**

## Perio-Mate

### Sub-gingival Biofilm Eraser

Perio-Mate is used in the treatment of periodontal pockets and peri-implantitis.

- For use with Perio-Mate Powder



MODEL **PER-PTL-P**

ORDER CODE **Y1002654**

RRP \$1696

**Sale Price**  
**\$1,187**

## Air-polishing Powder Range



MODEL **FLASH pearl (Box of 4)**

ORDER CODE **Y900698**

RRP \$327

**Sale Price**  
**\$278**



MODEL **SOFT pearl (Box of 4)**

ORDER CODE **Y1500721**

RRP \$327

**Sale Price**  
**\$278**



MODEL **Perio-Mate Powder (Box of 2)**

ORDER CODE **Y900938**

RRP \$313

**Sale Price**  
**\$266**

Available for the duration of the ADX Conference 2025. Not to be used in conjunction with any other NSK promotions. All prices are as quoted in AUD and include GST.

## Varios Combi Pro

### Ultrasonic scaling X Air Polishing

NSK has combined ultrasonic treatment and powder therapy into a single professional treatment unit that streamlines procedures and saves time and space. The detachable chamber and handpiece make it possible to easily switch between supragingival and subgingival applications and make the unit extremely user and maintenance friendly.

#### Basic Set Contents

• PROPHY-Handpiece with 60° Nozzle • PROPHY-Hose • PROPHY-CHAMBER • FLASH pearl (5 pcs. x 15 g sachets) • Maintenance kit • VA2LUX-Handpiece • VA2LUX-Hose • 3 Scaling tips • Sterilization case • Irrigation bottle (400 mL) • Foot control

#### Bundle Package Contents

• Varios Combi Pro Unit • PROPHY-CHAMBER for supragingival air polishing • x3 Prophy Handpieces with 60° Nozzle for supragingival cleaning • x4 300g bottles of FLASH pearl supragingival cleaning powder • PERIO-CHAMBER for subgingival air polishing • x2 Perio Handpieces • x2 boxes (40 pcs) Sterile disposable nozzle tip • x2 160g bottles of Perio-Mate Powder • x2 Optic scaler handpieces • x3 Scaling tips (G4, G6, G8) & Sterilization case

- Power supply : AC 100-240 V 50/60 Hz
- Frequency : 28-32 kHz
- Dimensions : W 225 x D 290 x H 162 (mm) (including chamber)
- Unit weight : 2.6 kg (Except attachment)
- Bottle volume : 400 mL



MODEL **VCP Bundle Package**

ORDER CODE VCPBUNDLEPKG

RRP \$12,751

Offer

**Free iCartV**

MODEL **Varios Combi Pro Basic Set**

ORDER CODE Y1004194

RRP \$7856

SALE PRICE

**\$5,499**

## Varios 970

### Portable Ultrasonic Scaler

The functionality required for ultrasonic applications is available in the most-advanced model in our compact series, the Varios 970. Our high-capacity 2 bottle system allows users to focus on safe treatment without worrying about water irrigation. Simple daily maintenance with auto rinse function and seamless body design.

Contents • Control unit • Handpiece • Handpiece cord • 3 Scaling tips (G4, G6, G8) • Foot control (FC-70) • 2 x Irrigation bottles • 3 x Tip wrench with torque limiter • AC power cord • Sterilization case

- Slimmest and lightest\* handpiece with LED illumination
- iPiezo engine ensures stable power output and performance
- Twin LED lights through twin optical glass rods
- Optic and non-optic handpieces available
- Extensive tip range for a wide range of applications

MODEL **Varios 970**

ORDER CODE Y1001168

RRP \$4526

SALE PRICE

**\$3,168**

View our complete tip range



## VIVA ace

### Mobile Dental Unit

A complete treatment centre in one compact unit. Complete with Suction, Ultrasonic scaler, Multi functional micromotor and 3&1 Syringe, the VIVAace allows more comfortable and advanced treatment, outside of the dental centre.

- E-Type motor, ultrasonic scaler, 3 in 1 syringe and suction combined in a single compact body including storage space for all instruments.
- Lightweight at 8.6 kg
- Dual foot controls to operate micromotor, ultrasonic scaler and suction
- Full endodontic functionality can be performed with (1:1) contra-angle.

MODEL **VIVAace Complete Set**

ORDER CODE Y1004228

RRP \$21,060

SALE PRICE

**\$17,901**

**NSK Create it**

Available for the duration of the ADX Conference 2025. Not to be used in conjunction with any other NSK promotions. All prices are as quoted in AUD and include GST.



**NSK** Create it

# Laboratory



## Straight Handpieces



MODEL **Ti-Max X65L**  
ORDER CODE **H273**

- Optic
- Single Water Spray
- HP Burs

RRP \$1955

**Sale Price**  
**\$1,369**



MODEL **S-Max M65**  
ORDER CODE **H1008**

- Non-Optic
- Single Water Spray
- HP Burs

RRP \$818

**Sale Price**  
**\$573**



MODEL **FX65m**  
ORDER CODE **H1014001**

- Non-Optic
- No Water Spray
- HP Burs

RRP \$461

**Sale Price**  
**\$392**

## VOLVERE i7

The VOLVERE i7 by NSK offers dental technicians a compact, stylish, and efficient lab engine. Designed to fit into tight spaces. Features include an auto-cruise function to reduce foot fatigue, microcomputer control for smooth operation, and a powerful, low-vibration micromotor with a dustproof mechanism.

### Contents

- Standard Micromotor System • VOLVERE i7 Control Unit • Motor Handpiece • Foot Control • Handpiece Stand
- E-Type Micromotor System • VOLVERE i7 • Control Unit E-Type Micromotor • Foot Control • Handpiece Stand

### Specifications

- Control Unit • Power Supply AC 230 V 50/60 Hz • Dimensions W 69 x D 185 x H 167 mm • Weight 930g

- Standard Type • Motor Handpiece Speed 1,000-35,000 min • Max. Torque 4.1 Ncm • Dimensions L 145 x Ø24.5 mm • Weight 192 g (without Cord) • Cord Length 1.2 m

- E-Type Motor Handpiece Speed 1,000-35,000 min • Max. Torque 4.1 Ncm • Dimensions L 109.3 x Ø24.5 mm • Weight 118 g (without Cord) • Cord Length 1.2 m



MODEL **VOLVERE i7 Standard**  
ORDER CODE **Y1003493**

RRP \$2115

**SALE PRICE**  
**\$1,481**



MODEL **VOLVERE i7 E-Type**  
ORDER CODE **Y1003494**

RRP \$1741

**SALE PRICE**  
**\$1,219**

Available for the duration of the ADX Conference 2025. Not to be used in conjunction with any other NSK promotions. All prices are as quoted in AUD and include GST.

## ULTIMATE XL Series

The Ultimate XL laboratory micromotor offers unprecedented smoothness and power with its 180° vector control system, ensuring efficient, stress-free work. Its ergonomic handpiece design reduces hand fatigue, making it ideal for delicate tasks. Features include low noise and vibration, a compact, lightweight body, digital speed display, and an adaptable turbine for versatile control.



### NSK Ultimate XL Bench Top

#### Contents

- Control Unit • Micromotor Handpiece
- Foot Control • Handpiece Stand

- Power Supply: AC 230 V 50/60 Hz
- Weight: 2.8 kg
- Dimensions: W 167 x D 247 x H 77 mm
- Max. Torque: 8.7 Ncm (Torque) / 6.0 Ncm (Compact)

MODEL **Torque Model: UMXL-GT**

ORDER CODE Y141469

MODEL **Compact Model: UMXL-GC**

ORDER CODE Y141470

RRP \$2932

SALE PRICE

**\$2,052**



### NSK Ultimate XL-D Bench Top Tower

#### Contents

- Control Unit • Micromotor Handpiece
- Foot Control • Handpiece Stand

- Power Supply: AC 230 V 50/60 Hz
- Weight: 3.3 kg
- Dimensions: W 81 x D 270 x H 230 mm
- Max. Torque: 8.7 Ncm (Torque) / 6.0 Ncm (Compact)

MODEL **Torque Model: UMXL-DT**

ORDER CODE Y141504

MODEL **Compact Model: UMXL-DC**

ORDER CODE Y141505

RRP \$2932

SALE PRICE

**\$2,052**



### NSK Ultimate XL-KT Knee Control

#### Contents

- Control Unit • Micromotor Handpiece
- Handpiece Stand

- Power Supply: AC 230 V 50/60 Hz
- Weight: 3.2 kg
- Dimensions: W 90 x D 270 x H 230 mm
- Max. Torque: 8.7 Ncm (Torque) / 6.0 Ncm (Compact)

MODEL **Torque Model: UMXL-KT**

ORDER CODE Y141495

MODEL **Compact Model: UMXL-KC**

ORDER CODE Y141496

RRP \$2932

SALE PRICE

**\$2,052**



### NSK Ultimate XL-F Floor Type

#### Contents

- Control Unit • Micromotor Handpiece
- Handpiece Stand

- Power Supply: AC 230 V 50/60 Hz
- Weight: 3.8 kg
- Dimensions: W 230 x D 292 x H 113 mm
- Max. Torque: 8.7 Ncm (Torque) / 6.0 Ncm (Compact)

MODEL **Torque Model: UMXL-FT**

ORDER CODE Y141513

MODEL **Compact Model: UMXL-FC**

ORDER CODE Y141514

RRP \$2932

SALE PRICE

**\$2,052**

## Additional Motor Cables & Handpieces

MODEL	ORDER CODE	SALE PRICE
UMXL-T Torque Motor Handpiece 1.2m Cord	Y141440	<b>\$1,220</b> RRP \$1435
UMXL-T Torque Motor Handpiece 2.0m Cord	Y141441	<b>\$1,770</b> RRP \$2082
UMXL-C Compact Motor Handpiece 1.2m	Y141444	<b>\$1,220</b> RRP \$1435
UMXL-C Compact Motor Handpiece 2.0m	Y141445	<b>\$1,770</b> RRP \$2082
NSK Presto Aqua II Handpiece Only	T816	<b>\$1,404</b> RRP \$1652



## Presto Aqua II

The PRESTO AQUA II offers adjustable water coolant options, ranging from fine mist to higher volume sprays, ideal for various materials. It features easy water bottle removal, can run independently or connect to mains water, and includes a dust-proof handpiece with a swivel, twist-free design.

MODEL **PRESTO AQUA II**

ORDER CODE Y150023

RRP \$3736

SALE PRICE

**\$2,615**



#### Contents

- PRESTO AQUA II Unit • PRESTO AQUA Handpiece • QD-J B3 Coupling • Hose for PRESTO AQUA II • Foot Control (AFC-40)
- Secondary Hose for PRESTO

- Water Coolant Spray
- Swivel Twist-free Handpiece
- Built-in Dust-proof System
- Simple & Easy Removal of Water Bottle

Available for the duration of the ADX Conference 2025. Not to be used in conjunction with any other NSK promotions. All prices are as quoted in AUD and include GST.



CHOOSE A CHAIR PACKAGE\*  
WITH A DÜRR IMAGING OR  
AUTOCLAVE BUNDLE AND  
**SAVE \$10,000**

VISIT US AT STAND 504



Buy an A-dec Chair  
Package\* and receive  
10 Years Warranty.  
Save \$10,000 when  
you bundle it with  
either a Durr Autoclave  
or Imaging product  
and get an A-dec  
Stool Package from  
**ONLY \$1,000**



**a-dec**  
reliablecreativesolutions

**DÜRR  
DENTAL**  
THE BEST, BY DESIGN





## CHOOSE A CHAIR PACKAGE\* AND RECEIVE 10 YEARS WARRANTY **SAVE \$10,000**



\*When you bundle it with either a Durr Autoclave **OR** Imaging product and get an A-dec Stool Package from only **\$1,000**

BUNDLE WITH



GET AN A-DEC STOOL PACKAGE



FROM **\$1,000**

GET AN A-DEC STOOL PACKAGE FROM ONLY **\$2,000**



SAVE **\$8,475**

## A-DEC 300 PRO DEALS

**INTRO PACKAGE**  
WAS \$44,725

**NOW \$36,250**

### INCLUDES

- 311B Pro Compatible Chair
- Formed Upholstery
- 332 Pro delivery with CP5 Touchpad
- 3-position Control Block
- 351/S/3 Assistant's instrumentation
- 372 LED Light

SAVE **\$10,750**

**SIMPLIFIED PACKAGE**  
WAS \$57,195

**NOW \$46,445**

### INCLUDES

- 311B Pro Compatible Chair
- Formed Upholstery
- 332 Pro delivery with CP5i Touchpad
- 4-position Control Block with electric motor
- 551STA Assistant's instrumentation
- 372 LED Light



## HYGOCLAVE AUTOCLAVES. HYGIENE IS IN OUR DNA. THE HYGOCLAVE 50 AND 40 SERIES.

The Hygoclave 50 and 40 series offers dental practices a professional Class B solution that combines impressive performance with a well thought-out operating

concept for maximum efficiency and exceptional user friendliness. It is designed to cope effortlessly with tough day-to-day working environments.

### OFFER 1

BUY AN A-DEC CHAIR PACKAGE<sup>#</sup>, BUNDLE WITH A DÜRR HYGOCLAVE AUTOCLAVE AND  
**SAVE \$10,000**



### OFFER 2

**HYGOCLAVE 40 PLUS PACKAGE**  
22 Litre

WAS \$17,398 **NOW \$12,995** SAVE \$4,403

**HYGOCLAVE 40 PACKAGE**  
17 Litre

WAS \$16,307 **NOW \$11,995** SAVE \$4,312



+  
Printer

### OFFER 3

**HYGOCLAVE 50 PLUS PACKAGE**  
22 Litre  
WAS \$19,579 **NOW \$13,995** SAVE \$5,584



Hygoclave 50 Plus + Printer + VistaSoft Monitor Software

**PIEZON®**  
THE ONE AND ONLY NO PAIN SCALER

**EMS<sup>+</sup>**

NO PAIN  
Module



PIEZON® PS  
NO PAIN Instrument



PIEZON® Handpiece

With PIEZON® NO PAIN technology, the power transmitted to the instrument automatically increases to remove the calculus effectively leading to maximized patient comfort.

It can be seamlessly integrated into your A-dec Delivery System.

		SPECIAL PRICE	SAVE
EM-FS-438	NO PAIN Kit <sup>†</sup>	\$3,608	\$496
EM-FS-437	NO PAIN Kit LED <sup>†</sup>	\$5,071	\$577
<sup>†</sup> Purchase an EMS Scaler Kit with an A-dec Delivery System, receive a FREE Analogue Connectivity Kit valued at \$308.			
EM-EN-041	Universal Handpiece	\$899	\$1,367

TERMS AND CONDITIONS: <sup>#</sup>Contract Presidential for details. Offers valid 20<sup>th</sup> March – 30<sup>th</sup> June 2025. All prices include GST.

**a dec**  
reliablecreativesolutions

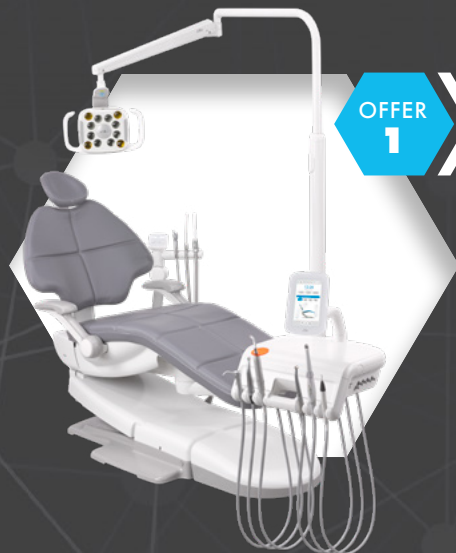


## VistaSystem Savings!

Your Complete Intra and Extra-oral Imaging Solution



The Dürr VistaSystem offers an imaging solution that's not just about clarity, it's about delivering certainty with every scan.



**OFFER 1**

BUY AN A-DEC CHAIR PACKAGE\*

**SAVE \$10,000**

ON A DÜRR IMAGING BUNDLE



**OFFER 2**

PURCHASE AN OPG OR CBCT SYSTEM

**SAVE \$4,000**

on VistaScan Mini View 2.0 Image Plate Scanner

VistaScan Mini has been known for its unparalleled image quality for the past 20 years. The unit keeps evolving, now with a new design and AI image processing features, helping you streamline your intra-oral X-ray process.



**OFFER 3**

BUY A VISTASCAN MINI VIEW 2.0  
WAS \$17,495 | NOW \$16,995 **SAVE \$500**

GET 2 FREE IQ CONSUMABLE PACKS VALUED AT \$1,708\*\*



**OFFER 5**

VISTAINTRA DC: X-RAY GENERATOR  
WAS \$7,645 | NOW \$7,145 **SAVE \$500**

• Simple operation and accurate positioning • Versatile arm lengths to suit your surgery • Reliable with long service life • Adjustable mA and kV • 0.4 mm Focal Spot.

iX HD Smart

**OFFER 4**

VISTACAM iX INTEGRATED INTRODUCTORY OFFER

WAS \$7,880 | NOW \$5,995 **SAVE \$1,885**

• Brilliant images and excellent camera diagnosis • One camera, many options • Excellent image quality • Software analysis for detection of caries lesions and visualisation of plaque through fluorescence • Diagnostic aid for detection of proximal caries, without radiation exposure • Multi-user capability.

PLUS RECEIVE FREE A-DEC POWERED USB HUB AND ADAPTOR VALUED AT \$1,200

VISTACAM iX HD SMART **SAVE \$1,000** ON EITHER BENCHTOP OR INTEGRATED MODEL

**TERMS AND CONDITIONS:** \*Package must include Chair, Upholstery, Configured Delivery System with A-dec Electric Motor and Tray Holder, 500 LED Lights, 551 Assistants Instrumentation with Support Link, Scaler and Stool Set, and one piece of Dürr Sterilisation or Imaging Equipment. Contact Presidential for more details. Offer valid 20<sup>th</sup> March 2025 – 30<sup>th</sup> June 2025. This offer cannot be combined with any other chair promotions. \*\*Free consumables offer for VistaScan Mini View 2.0 is valid from 10<sup>th</sup> March – 11<sup>th</sup> April 2025. Free IQ packs supplied via redemption from Dürr Dental Oceania. All Prices include GST. JAD2500008\_0325

**a dec**  
reliable creative solutions

SCAN THE QR CODE TO FIND YOUR NEAREST A-DEC DEALER





**Lisa**

**Promotion Package\***

Traceability kit includes:  
Consumable Kit  
Label printer  
QR Bar code reader

**CODE: PLUS\_Discount LISA**



**lisa**

**SAVE over \$5,000 with a Lisa steriliser package from Presidential!**

The main graphic features a large white Lisa steriliser unit on the right. To its left, a green-outlined cross symbol is centered. Above the cross, a green-bordered box displays the traceability kit components: a handheld QR bar code reader, a label printer, and two rolls of labels. Below the cross, a green-bordered box shows two smartphones displaying the ioDent app interface. A large green circle on the right side of the graphic contains the text: **FREE** Traceability Kit & ioDent Cloud-based services.

# Synea Fusion & Vision

## Promotion

**Clinic**  
synea



**BUY 2  
GET 1  
FREE!!\***

**BUY 3  
GET 2  
FREE!!\***

**ASK US  
FOR A  
QUOTE &  
SAVE!!**

\*Can Mix & Match, FREE item is equal to the lowest priced item.





# Implantmed Plus

SET 3 + receive a  
**FREE** contra-angle  
surgical handpiece (20:1)  
with light.

## Implantmed Plus

- › Control Unit
- › foot contro S-N2
- › Motor with 1.8m cable
- › Stand
- › Universal support
- › Mains cable
- › 3 disposable irrigation tubings
- › plus FREE WS-75 LG

CODE:  
**Set3 PKG**

**\$ 7,445.00**

Save \$ 2,650.00



implantmed PLUS





# Implantmed Plus

SET 6 + receive a  
**FREE** contra-angle  
surgical handpiece (20:1)  
with light.

## Implantmed Plus

- › Control Unit
- › Wireless foot control
- › Motor with 1.8m cable
- › Stand
- › Universal support
- › Mains cable
- › 3 disposable irrigation tubings
- › plus FREE WS-75 L

CODE:  
**Set6 PKG**

**\$ 9,970.00**

Save \$ 2,525.00



implantmed PLUS

**Ask us about Surgery Setup deals with W&H handpieces, handpiece oilers, Surgical Consoles & Surgical Handpieces!!**



**Ask us for a Surgery Setup quote with Massive savings!!**



**20% OFF**

**Alegria handpieces**



**20% OFF**

**Implantmed & Piezomed module**



**20% OFF**

**Surgical handpieces**



vatech

# Deals for New Clinics Opening!

## BUY a VATECH OPG or CBCT & RECEIVE FREE BONUSES!!

**BUY**

Vatech  
PaX-i



**RECEIVE  
FREE BONUS**



**WITH 5 YEARS  
WARRANTY**

**SAVE \$6,500!!**

**BUY**

Vatech  
Smart Plus



**RECEIVE  
FREE BONUS**



**WITH 5 YEARS  
WARRANTY**

**SAVE \$13,000!!**

**BUY**

Vatech  
GreenX



**RECEIVE  
FREE BONUS**



**WITH 10 YEARS  
WARRANTY**



**WITH 5 YEARS  
WARRANTY**

**SAVE \$16,400!!**

\*FREE intra-oral set can be changed to VSP.

\*Can upgrade FREE item to something more expensive, by only paying the difference.



Setting up a **New Practice?**  
We've got you!

Get Full Digital Solution  
with **vatech**!

SAVE 30%  
WHEN SETTING UP  
A NEW CLINIC  
WITH VATECH  
IMAGING  
PRODUCTS!



GET A FREE  
BONUS WHEN  
TRADING UP &  
SAVE 30% ON  
ADDITIONAL ITEMS  
PURCHASED!!



**vatech** australasia

**TRADE UP.**

Want to Know  
the **VALUE** of  
your old OPG ?



Contact Presidential for details:  
**1800 773 743**

**vatech** australasia

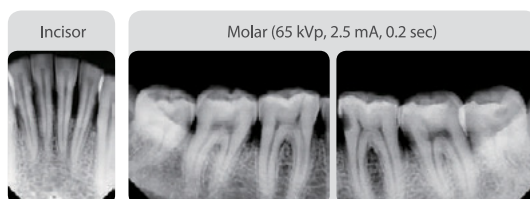
# Vatech EzRay Air Portable

vatech

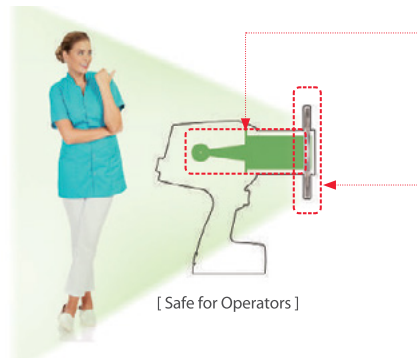
## WEIGHT INNOVATION WITH CNT (CARBON NANO TECHNOLOGY)

The world's first dental application of Carbon Nano Technology.

The EzRay Air Portable is a lightweight portable x-ray device that is designed for easy handling and stable positioning, delivering optimal image quality for your intra-oral x-ray images.



## DOUBLE SCATTER SHIELD DESIGN FOR OPERATOR SAFETY



### INTERNAL SHIELDING

The internal radiation shielding is perfectly designed to protect the operator from radiation leakage.

### EXTERNAL BACKSCATTER SHIELDING

Exposure to radiation results from the beam interacting with the surface of the patient, causing radiation to bounce off as radiation scatters in different directions. The backscatter shield significantly reduces the amount of radiation being reflected.

## LOWER COOLDOWN TIMES, FASTER WORKFLOW

The EzRay Air Portable's unique carbon-nano technology efficiencies, which are not available in traditional x-ray generation methods, means there is a 75% reduction in cool-down time between shots, when compared to leading competitor's devices. This allows users to spend less time waiting for their x-ray to be ready and more time diagnosing and treating the patient.

## NO WARMUP TIME

With no initial start-up delay for conventional x-ray sources to warm up, the EzRay Air Portable's Carbon Nano Technology optimizes workflow by allowing for quicker exposure after you initially turn on the device.



ASK US  
FOR BEST  
PACKAGE  
PRICING!



**Vatech EzScan**

**vatech**

# EXPAND YOUR DIGITAL WORKFLOW

CALL US  
FOR SPECIAL  
PRICING!



## **SIMPLE AND INTUITIVE INTERFACE FOR AN IMPROVED SCANNING EXPERIENCE**

- Clear and intuitive interface for ease of use
- Essential functionality for many treatment plans



## **CASE SHARING**

- EzScan Cloud is an easy-to-use file-sharing module for sharing digital impressions with the lab of your choice.



## **QUICK SCAN TIME FOR WORKFLOW EFFICIENCY**

- Full arch scans in under 1 minute from start to finish



## **OPEN PLATFORM WITH NO CONTINUED FEES**

- Easy to export to your treatment planning software or to send it to the lab of your choice
- Maximize your ROI with no continued fees





Special Offers

APRIL - JUNE 2025

# Smart and intuitive.

NEW

## VarioSurg 4

The Essential Ultrasonic Bone Surgery System for Implant Treatments

## VarioSurg 4

### ULTRASONIC BONE SURGERY SYSTEM

NEW

BUY VARIOSURG 4 **GET FREE ADDITIONAL** OPTIC SCALER WITH 2M CABLE WORTH \$5,517

## Perform safer bone surgery with NSK VarioSurg 4

With its stylish design and wireless foot control, VarioSurg 4 builds on the reliability and control of previous models to deliver a modern ultrasonic bone surgery system, with Piezo technology to minimise damage to surrounding tissue and bone.

### Specifications – Control Unit

- Frequency: 28-32 kHz
- Power supply: AC100 - 240V 50/60 Hz Max.
- Pump output 76 mL/min
- Programs: SURG x5, ENDO x2, PERIO x2
- Dimensions: W 245 x D 235 x H 90 mm

### Complete set

MODEL VARIOSURG 4 (230V)  
ORDER CODE Y1500768  
RRP \$12,468

#### Includes:

- Control unit
- LED handpiece with 2m cord
- FC-86 foot control
- Sterilisation cassette
- Handpiece stand
- Irrigation tube (3 pcs.) and other accessories
- Basic H-S Kit (H-SG1, SG3, SG5, SG6D, SG7D, SG11 and Tip holder)



### Complete set without Foot Control

MODEL VARIOSURG 4 W/O FC (230V)  
ORDER CODE Y1500769  
RRP \$10,060

#### Includes:

- Control unit
- LED handpiece with 2m cord
- Sterilisation cassette
- Handpiece stand
- Irrigation tube (3 pcs.) and other accessories
- Basic H-S Kit (H-SG1, SG3, SG5, SG6D, SG7D, SG11 and Tip holder)

For more information scan the QR code.



## Surgic Pro2

### IMPLANT AND ORAL SURGERY

### Specifications

- Power supply: AC 100-240V 50/60 Hz Max
- Pump output: 75 mL/min
- Programs: 8 Programs/Implant Systems
- Dimensions: W 245 x D 235 x H 90 mm
- Torque: 5-80 Ncm
- Motor speed: 200-40,000 min<sup>-1</sup>
- Coolant solution flow volume button
- Light power (optic micromotor) over 32,000 LUX
- Foot control functions
- PRG (Program) button
- Forward/Reverse button
- Speed control pedal

### Complete set with X-SG20L

MODEL SURGIC PRO2 OPT  
ORDER CODE Y1500511

#### Includes:

- Control Unit
- Unit SGL80M Optic Micromotor
- X-SG20L Optic Handpiece (20:1 Reduction)
- Foot control wireless
- Irrigation tube (pack of 3) and other accessories

RRP \$8,726

PROMO PRICE \$6,108

SAVE \$2,618

For more information scan the QR code.



OSSEO 100+ **30% OFF**

## Osseo 100+

### OSSEOINTEGRATION MEASURING DEVICE

### Removes doubt

The 'Osseo 100+' measures the implant stability quotient contactlessly and can be connected using Bluetooth®, permitting ISQ confirmation over a shared interface. You can share and manage the data of those measured ISQ scores on other terminals through Surgic Pro2. Multipeggs sold separately.



MODEL OSSEO 100+  
ORDER CODE Y1004176

RRP \$3,806

PROMO PRICE \$2,664

SAVE \$1,142

For more information scan the QR code.



## Surgical Handpieces

Wide range of surgical handpieces, to suit a variety of procedures, from implants, to surgical extractions and more.

For more information scan the QR code.



### 30% OFF ALL SURGICAL HANDPIECES



**Implant Handpiece**  
MODEL **S-MAX SG20**  
ORDER CODE **C1010**

- Non-Optic
- Reducing 20:1
- Stainless Steel
- CABurs

**RRP \$1,657**

**PROMO PRICE \$1,160**

**SAVE \$497**



**Micro Surgery Handpiece**  
MODEL **SGA-ES**  
ORDER CODE **H263**

- Non-Optic
- Direct Drive 1:1
- 20° angulation
- 65mm HP burs

**RRP \$2,107**

**PROMO PRICE \$1,475**

**SAVE \$632**



**Micro Surgery Handpiece**  
MODEL **SGS-ES**  
ORDER CODE **H264**

- Non-Optic
- Direct Drive 1:1
- 65mm HP Burs

**RRP \$1,520**

**PROMO PRICE \$1,064**

**SAVE \$456**



**Rear Exhaust Handpiece**  
MODEL **Ti-MAX X450L**  
ORDER CODE **P1078**

- Optic
- Rear-exhausted 45° head
- 21W Power

\*Standard head for NSK coupling

**RRP \$1,677**

**PROMO PRICE \$1,174**

**SAVE \$503**



**Rear Exhaust Handpiece**  
MODEL **X450KL**  
ORDER CODE **P1079**

- Optic
- Titanium high speed HP
- 45° angled head

\*Standard head for KaVo®.

**RRP \$1,855**

**PROMO PRICE \$1,299**

**SAVE \$556**



**Contra-angle Handpiece**  
MODEL **Ti-MAX Z45L**  
ORDER CODE **C1064**

- Optic
- 1:4.2 Speed Increasing
- Switch Spray function
- 45° angled head
- For FG burs

**RRP \$2,263**

**PROMO PRICE \$1,584**

**SAVE \$679**



## High-Speed Handpieces

### Ti-MAX Z PREMIUM

For more information scan the QR code.



### 30% OFF A SINGLE HANDPIECE – OR BUY 2 @ RRP AND GET 1 FREE (OF EQUAL OR LESSER VALUE)

## Dynamic Power System

Equipped with a new system, the "DYNAMIC POWER SYSTEM" that provides a revolutionary cutting feel. The enlarged exhaust port, optimized nozzle structure, and enlarged rotor chamber achieve the highest rotational power in its category.

### Specifications

- Titanium Body
- DURAGRIP
- Cellular Glass Optics
- Ceramic Bearings
- Clean Head System
- Push Button Chuck
- Quattro Spray

- Quick Stop
- Microfilter\*
- DYNAMIC POWER SYSTEM\*
- DURAPOWERCHECK\*
- Simple Cartridge Change

\*Only Z890L/Z990L



**Miniature Head Handpiece**  
MODEL **Ti-MAX Z890L**  
ORDER CODE **PA23720001**

- Power: 41 W\*\*
- Speed: 320,000-400,000 min<sup>-1</sup>
- Head Size: ø10.6 x H 10.8 mm

\*\*At 3-4.2 bar.

**RRP \$1,981**

**PROMO PRICE \$1,387**

**SAVE \$594**



**Standard Head Handpiece**  
MODEL **Z990L**  
ORDER CODE **PA23730001**

- Power: 44 W\*\*
- Speed: 280,000-360,000 min<sup>-1</sup>
- Head Size: ø12.1 x H 12.7 mm

\*\*At 3-4.2 bar.

**RRP \$1,981**

**PROMO PRICE \$1,387**

**SAVE \$594**



**Micro Head Handpiece**  
MODEL **Ti-MAX Z MICRO**  
ORDER CODE **PA2357**

- Power: 20 W
- Speed: 380,000-450,000 min<sup>-1</sup>
- Head Size: ø9.0 x H 10.8 mm

**RRP \$1,381**

**PROMO PRICE \$967**

**SAVE \$414**

**Ti-Max Z890 Other Connections**

- KaVo®, Dentsply Sirona® & W&H®

**RRP \$2,074**

**PROMO PRICE \$1,452**

**SAVE \$622**

**Ti-Max Z990 Other Connections**

- KaVo®, Dentsply Sirona® & W&H®

**RRP \$2,074**

**PROMO PRICE \$1,452**

**SAVE \$622**

**Ti-Max Z Micro Other Connections**

- KaVo®, Dentsply Sirona® & W&H®

**RRP \$1,591**

**PROMO PRICE \$1,114**

**SAVE \$477**



## NLZ Electric Micromotor

WITH Ti-MAX Z95L

**GET 35% OFF NLZ PORTABLE AND Ti-MAX Z95L**

Switch to an electric motor with this easy plug and play system. Boost your crown preps and take control with the NLZ Motor and Ti-Max Z95L handpiece.

### Brushless Electric Micromotor Portable System

MODEL **NSK NLZ S230**  
ORDER CODE **Y1500360**

#### Specifications:

- Optic
- Speed: 2,000-40,000 min<sup>-1</sup>
- Torque: 3.4 Ncm
- Internal water spray
- Rated input: AC 28V 50/60 Hz
- Dimensions: W127 x D149 x H54 (mm)
- Weight: 517 g

#### Includes:

- Control & Main unit
- AC adaptor
- NLZ Motor/cord/bracket

Does not include handpiece.

**RRP \$4,753**

**PROMO PRICE \$3,089**

**SAVE \$1,164**



### Ti-Max Z Series

As specialists in ultra-high-speed rotary equipment, NSK is passionate about creating innovative products that deliver outstanding value. NSK manufactures almost all parts in-house to guarantee the highest precision, reliability and unmatched performance of all products.

The Ti-Max Z contra-angle and air turbine series resulted from NSK's constant quest to make the impossible possible.

MODEL **Ti-MAX Z95L**  
ORDER CODE **C1034SW**

- Optic
- 1:5 Speed Increasing
- Switch Spray function
- For FG Burs

**RRP \$2,121**

**PROMO PRICE \$1,379**

**SAVE \$742**



For more information scan the QR code.



**30% OFF SELECTED S-MAX RANGE**

Stainless steel handpieces, all with internal water and choice of Optic or Non-Optic.

### S-Max M Series

The S-Max M series is the next phase of evolution of our globally acclaimed handpieces. These new models are the embodiment of NSK's expertise in handpieces. The M series delivers the reliability and safety demanded by both practitioners and the ever-changing standards of the dental instrument industry.

MODEL **S-MAX M900L**  
ORDER CODE **P1254**

- Optic
- 26W Power
- StainlessSteel
- Standard head

**RRP \$1,381**

**PROMO PRICE \$967**

**SAVE \$414**

MODEL **S-MAX M900**  
ORDER CODE **P1256**

- Non-Optic
- 26W Power
- StainlessSteel
- Standard head

**RRP \$1,307**

**PROMO PRICE \$915**

**SAVE \$392**



MODEL **S-MAX M95L**  
ORDER CODE **C1023**

- Optic
- 1:5 Increasing
- Quattro Water Spray
- StainlessSteel
- For FG burs (ø1.6)

**RRP \$1,763**

**PROMO PRICE \$1,234**

**SAVE \$529**

MODEL **S-MAX M95**  
ORDER CODE **C1026**

- Non-Optic
- 1:5 Increasing
- Quattro Water Spray
- StainlessSteel
- For FG burs (ø1.6)

**RRP \$1,405**

**PROMO PRICE \$984**

**SAVE \$421**



MODEL **S-MAX M25L**  
ORDER CODE **C1024**

- Optic
- 1:1 Direct Drive
- Single Spray
- StainlessSteel
- For CA burs

**RRP \$1,353**

**PROMO PRICE \$947**

**SAVE \$406**

MODEL **S-MAX M25**  
ORDER CODE **C1027**

- Non-Optic
- 1:1 Direct Drive
- Single Spray
- StainlessSteel
- For CA burs

**RRP \$949**

**PROMO PRICE \$664**

**SAVE \$285**



### E-Type Non-Optic Airmotor

MODEL **S-MAX M205**  
ORDER CODE **M1007001**

- Non-Optic
- Internal Water Spray
- Max. 25,000 min<sup>-1</sup>
- Midwest 4-hole port

**RRP \$1,214**

**PROMO PRICE \$850**

**SAVE \$364**



Connects to



For more information scan the QR code.



## Perio-Mate BIOFILM ERASER

**25% OFF FOR PERIO-MATE AND PROPHY-MATE NEO COMPLETE SYSTEMS**

### Range of applications from supragingival to subgingival use

- Treatment of periodontal pockets and peri-implantitis
- Eradication of biofilm in periodontal pockets
- Removal of plaque and discolouration
- NSK's innovative nozzle tip
- Precise, flawless powder flow
- Slim nozzle design
- Smooth 360° rotation
- Powder control ring

**MODEL PER-PTL-P for NSK FlexiQuik Coupling**  
**ORDER CODE Y1002654**

#### Includes:

- Handpiece
- Powdercase
- Nozzle tip (40 pcs.)
- Maintenancekit
- Perio-Mate Powder 160 g x 1

**RRP \$1,696**

**PROMO PRICE \$1,272**

**SAVE \$424**

For more  
information scan  
the QR code.



Also available in fittings for KaVo®, Dentsply Sirona®, W&H®.

## Prophy-Mate neo AIR POLISHING SYSTEM

### The best polishing tool for beautiful white teeth

- Removal of plaque and discolouration
- Preparation for pit and fissure sealant
- Simple to operate
- Easy maintenance
- Sturdy and reliable
- Quick connect to major brands of turbine couplings
- Comes with 60° and 80° nozzles

**MODEL PMNG-PTL-P for NSK FlexiQuik Coupling**  
**ORDER CODE Y135029**

#### Includes:

- Handpiece with 60° nozzle head
- Powdercase
- Replacement nozzle head 80°
- 5 pcs. x 15 g sachets of FLASH pearl cleaning powder
- Maintenancekit

**RRP \$1,696**

**PROMO PRICE \$1,272**

**SAVE \$424**

For more  
information scan  
the QR code.



Also available in fittings for KaVo®, Dentsply Sirona®, W&H®.

## Varios Combi Pro Bundle Pack

### TWO MAINTENANCE SYSTEMS IN ONE

**GET A FREE iCARTV WITH WATER BOTTLE, WORTH \$2,535 WHEN YOU PURCHASE THE VARIOS COMBI PRO BUNDLE PACKAGE**

Combining ultrasonic scaling and powder therapy for more effective and comfortable oral hygiene and biofilm control.

**MODEL VCP BUNDLE PACK**  
**ORDER CODE VCPBUNDLEPKG**

#### Includes:

- 1 x VCP Basic Kit
- 1 x Perio Kit
- 1 x box flash pearl
- 1 x perio mate powder
- 1 x extra scaler handpiece
- 1 x extra perio handpiece
- 2 x extra prophy handpieces
- 1 x box of nozzle tips

**RRP \$12,751**



**MODEL iCARTV**  
**ORDER CODE S9090V**

- Dimensions: H101.65cm
- Includes water bottle
- Adjustable height
- Lockable wheels

**RRP \$2,536**

**FREE**

**SAVE \$2,536**

For more  
information scan  
the QR code.



## ENDO-MATE TC2 ENDODONTIC MOTOR

**30% OFF ENDO-MATE TC2**

### Simple, precise root canal treatment

Compact endodontic motor has a wide range of torque and speed settings, allowing use Ni-Ti files from virtually all major manufacturers.

- Fits major brands of files
- Torque control, with an auto-reverse function
- Compact and stylish design desktop unit
- Wide screen provides high visibility
- Flat control panel allows simple and user friendly operation
- Lightweight, smart and high visibility handpiece.



**MODEL ENDO-MATE TC2 (230V) MP-F16R HEAD**  
**ORDER CODE Y1001027**

#### Includes:

- MP-F16R Head (TC2) (TC2 MPA)
- ENDO-MATE TC2 Motor
- Battery charger
- Speed range: 2,000-9,000 min<sup>-1</sup>
- Charge: 1.5 h (depending on workload)
- Continuous use: 1.2 h (depending on workload)

**RRP \$2,263**

**PROMO PRICE \$1,584**

**SAVE \$679**

For more  
information scan  
the QR code.



**MODEL ENDO-MATE TC2  
MPA ORDER CODE Y1001028**

**RRP \$2,716**

**PROMO PRICE \$1901**

**SAVE \$815**

## iCare

### HANDPIECE MAINTENANCE AND CARE

**35% OFF iCARE AND ADAPTORS**

#### Automatically lubricate

iCare sets a new standard for handpiece maintenance systems. In one stylish and compact body, it offers you both ease of use and multiple functions to achieve complete lubrication. The proper solution volume is preset based on handpiece type, and maintenance can be initiated at the touch of a button. The chuck cleaning system keeps chucks pristine, and the purging select mode lets you alter purge time depending on the situation for truly comprehensive maintenance. Thanks to its stylish and compact body, iCare is also space efficient and totally in harmony with your working environment.

#### iCare complete sets

- Power supply: AC 100-240 V 50/60 Hz
- Air pressure: 0.5-0.6 MPa (5.0-6.0 kgf/cm<sup>2</sup>)
- Weight: 6.5 kg (C2 type/C3 type)
- Dimension: W 280 x D 240 x H 350 (mm)
- Solution tank capacity: 1.2 L
- Connects only to Midwest 4-hole port
- Air piping is necessary (5.0-6.0 kgf/cm<sup>2</sup>)

#### Includes:

- iCare unit
- Power cord
- Chuck cleaning nozzle
- Maintenance oil for iCare (1 litre)
- Mist filter set
- Oil absorber sheet
- Air tube



**Dual Standard Connectors +  
Dual Rotation Connectors**

**MODEL iCARE C2 TYPE  
ORDER CODE Y1002787**

**RRP \$5,489**

**PROMO PRICE \$3,568**

**SAVE \$1,921**



**Single Standard Connector +  
Triple Rotation Connectors**

**MODEL iCARE C3 TYPE  
ORDER CODE Y1002788**

**RRP \$5,863**

**PROMO PRICE \$3811**

**SAVE \$2052**

For more  
information scan  
the QR code.



Adaptors available to suit NSK, KaVo, Sirona, W&H and Morita couplings.

## ULTIMATE XL Series

### BENCH TOP CONTROL SYSTEM

**30% OFF ULTIMATE XL SERIES**

#### Great hands need great tools

The ULTIMATE XL Series offers a choice of four control units, according to space and user requirements.

#### Includes:

- Control unit
- Micromotor handpiece
- Speed of 1,000-50,000 min<sup>-1</sup>
- Auto-cruise function
- Brushless



**ULTIMATE XL Bench System  
(with Torque Motor)**

**MODEL UMXL-GT ORDER  
CODE Y141469**

**RRP \$2,932**

**PROMO PRICE \$2,052**

**SAVE \$880**

**ULTIMATE XL Bench System  
(with Compact Motor)**

**MODEL UMXL-GC ORDER  
CODE Y141470**

**RRP \$2,932**

**PROMO PRICE \$2,052**

**SAVE \$880**



For more  
information scan  
the QR code.



Choose from a wide range of configurations to suit your needs, options available for both Compact or Torque Motors.

All prices as listed. Valid until 30 June 2025. Not to be used in conjunction with any other NSK promotions. All prices are as quoted in AUD and include GST.



# Setup your new surgery with Presidential & SAVE!!

**MELAG**  
competence in hygiene



Buy a Melag Pro or  
Prime Line steriliser  
& receive a FREE  
Melaprint80  
traceability printer



**FREE!**  
**SAVE**  
**\$1,305!!**

**Ask us about special pricing on  
MelaTHERM, CareClave, CliniClave, MelaTRACE, MelaSEAL!**

**Contact us today to see how much you can save  
on your new Steri Room Equipment Package!**



# Enbio Pro & Enbio S

enbio®

Enbio sterilisers are up to 6 times smaller and 3 times lighter than a typical class-B / vacuum autoclave. But when it comes to work efficiency, they keep up the pace.

## Superfast sterilisation

Up to 4 times faster cycle time than the typical autoclave.

## Perfectly dry pouches in no time

Enbio S sterilises a load of wrapped instruments in just 15 minutes (Enbio Pro – 18 minutes).

## Emergency sterilisation

In case of emergency, you can sterilise unwrapped instruments for immediate use in just 7 minutes.

## Simple

Enbio is so simple to install and operate that it takes longer to explain how simple it is.

## Inaudibly silent

Enbio autoclaves work unbelievably silent. Wherever you use it, nobody will notice it's working.

## Enbio Magic Filter: forget about water

Imagine a race car covering a long distance on a teaspoon of fuel. Enbio autoclaves are like that. With Enbio Magic Filter as a standard equipment, they can run up to 1000 processes on just 1 litre of demineralised water. No tap or sink required.

## Enbio S. Speedmaster.

Enbio S is compact to fit even a cramped space. Unbelievably short process times will save your procedure in emergency, or allow sterilisation of the instruments as you go, between patients.

## Enbio PRO. Small foot. Big space.

Enbio PRO is an ideal solution as a basic workhorse in a small practice. Superfast sterilisation and room to hold most of the instruments, including popular implant cassettes.



**SPECIAL PRICING!!**

**Enbio Standard** **\$4,500** **SAVE \$557.44!**

**Enbio Pro** **\$5,500** **SAVE \$569.94!**





## Q2 PROMOTIONS

Available 01/4/2025 to 30/06/2025

### sopix series



Save  
30% on all  
Sopix  
sensors

#### SMART DOSE

The ACE® technology protects the image from over exposure for an optimal quality without any effort.



#### SMART FLOW

Our sensors adapt to all clinical cases, all morphologies and all software, to provide you and your patients greater comfort.



#### SMART TECHNOLOGY

Our latest generation of digital sensors provide a sharp X-ray image for an easy reading of the different dental tissues.

### Special Offer

**SOPIX 2** USB Sensor **SIZE 1** - High Definition for Windows or Mac **\$5,748.00** RRP

**SOPIX 2** USB Sensor **SIZE 2** - High Definition for Windows or Mac **\$6,800.00** RRP

### pspix2

#### By your side, to care for everyone

ACTEON® place its 20 years of expertise at your service and those of your patients.

The first simple and intuitive personal imaging plate scanner provides outstanding images and was designed to free practitioners from constraints.

Whatever your patient's morphology or pathology, the PSPIX®² adapts to your needs. As your personal assistant or in collaborative mode, experience high productivity without compromising on quality.

- 1 - **Striking Contrast** for a more reliable Diagnosis
- 2 - **The Smallest Scanner** on the market
- 3 - **The Fastest Scanner** on the market
- 4 - The **most intuitive** Scanner
- 5 - **Thin and flexible imaging plates** of various sizes for adaptability and outstanding patient comfort.



### Special Offer

**Buy** PSPIX2 **\$12,990.00** RRP **GET** 1 Box Imaging Plates **FREE**





# x-mind ac x-mind dc



## Experience intuitive excellence

Designed to simplify daily operations, prioritise patient safety and enhanced dental workflows X-MIND AC/DC is the perfect choice for modern dental professionals.

Three arms lengths are available : 41 cm (16.2"), 82.5 cm (32.5") and 110 cm (43.5") and can be: Top wall mounted  
Bottom wall mounted Dental unit, ceiling and mobile version are also available.

X-MIND DC available with  
**Remote Wireless Control**

- No more wiring issues
- Cost effective
- Enhanced Convenience



**X-Mind DC \$4,999.00 RRP New X-Mind DC Wireless Button \$945.00 RRP**

# x-mind unity

## Versatility for "extended" possibilities

With its elegant style coupled to the cutting edge patented ACE® technology (Automatic Exposure Control) and the possibility to integrate SOPIX® Plug-In sensor, X-MIND® Unity brings the standards of protection, accuracy and comfort to a next level.

X-Mind® unity is available in different configurations allowing to fulfill any operational need. Arm lengths: 0.40 m, 0.80 m, 1.10 m - installation type: top wall, bottom wall, mobile stand.



**X-Mind UNITY \$6,999.00 RRP**



# C50 Full HD Camera

## with diagnostic Aid Option

The **C50 Camera with diagnostic-aid option** is the only camera on the market to cover so many pathologies, featuring 4 integrated vision modes for seamless navigation.

### Remarkable clinical vision

**Full HD resolution**  
high resolution for superior  
image quality

**Autofocus**  
for a clear setting-free  
image for smooth

**4 camera shots available;**  
macrovision, single tooth,  
smile and portrait

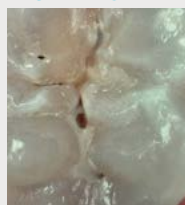
### Remarkable clinical versatility

#### DAYLIGHT MODE



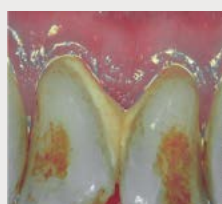
Record of **natural colors** for a better interpretation of tooth shade, pathology identification and patient follow-up

#### DAYLIGHT+ MODE



High **contrasts** emphasizing anatomic fissures and details of the dentin structure/depth.

#### PERIO MODE



Enhancement of **dental plaque and gingival inflammation** thanks to chromatic amplification.

#### CARIO MODE



Caries **detection** by fluorescence technique by LEDs.

To order: C50 with diagnostic Aid S\_C50\_0001

C50 without diagnostic Aid S\_C50\_0002

# Servotome II

## A New Impulse In Electrosurgery

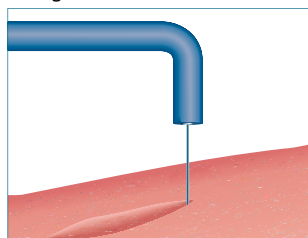
High frequency electrosurge or orthodontics, periodontics and other oral surgery with a single footswitch, a box with 10 electrodes & a conductive bracelet.

**2 YEARS WARRANTY**



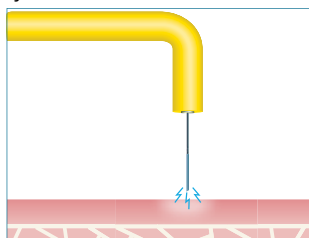
#### Electrosection

Vaporizing the tissue with the active electrode makes it possible to cut quickly without damaging the edges of the incision.



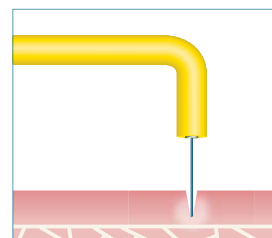
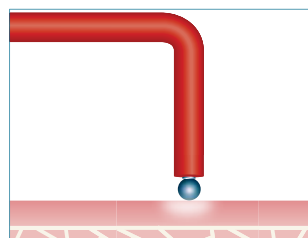
#### Fulguration

Makes it possible to surface coagulate gingival tissue while protecting the underlying layer.



#### Coagulation

Concentrating energy at the surface of a massive electrode makes it possible to diffuse the heat to the surrounding tissue and produce instantaneous hemostasis.



# Softly Amalgamator

Softly is very stable, extremely quiet, and very easy to clean and maintain. To guarantee totally safe operation, softly is deactivated when you open the front cover to access the capsule. Softly is made entirely of injection-moulded ABS material. It complies with all electrical and mechanical safety standards.

**10% OFF RRP**



# x-mind prime 2

acteon  
imaging suite

## 56 x 2D and 3D programs

- Easy interface to use
- Complete 3D diagnostic tools, powered by AIS3DAPP, to fully exploit the clinical content from your cases
- The Implant Planning Wizard combined with a Cloud implant library allows you to easily and safely plan your surgery in just a few clicks
- The Surgical Guide Design option brings your planning to the surgical room with the highest fidelity possible with a custom designed surgical stent
- Effective patient engagement: export to portable viewer and involve the patient in the diagnostic process and raise his awareness to boost case acceptance

## Strong hardware combined with smart software to fast diagnostic.

Elevate your clinical performances

Whatever your specialty in dentistry, the quality of the diagnosis is a pillar of a clinical workflow to guarantee successful analysis, treatment plan, procedure and outcomes.

On X-MIND® prime, a complete choice of exam modalities combined with a premium-class image quality will get you the ability to successfully handle any patient type in any clinical landscape.



## Last detection technologies for high technical performance



High resolution image, up to 72,5µm of voxel size



Fast acquisition



SMART option, the innovative Selective Metal Artifacts Reduction Tool

## Meet the Prime Family

X-MIND® prime is available in four models, 2D wall mounted, 3D wall mounted, 2D ceph and 3D ceph, to suit any installation setup and clinical need.



X-MIND® prime 2D ceph



X-MIND® prime 2D wall mounted



X-MIND® prime 3D wall mounted



X-MIND® prime 3D ceph

**Save up to 35% on CBCT & OPG While stocks last**



## NEWTRON P5XS

## ULTRASONICS

NEWTRON® technology, a guarantee of efficacy and safety. The perfectly-controlled vibrations and high-quality tips bring to treatments more preservation, efficacy and comfort.

### PRECISION

Precise treatments thanks to the controlled linear vibrations

### PRESERVATION

Tissue preservation with the automatic and continuous frequency adjustment

### COMFORT

Comfort for the patient and practitioner thanks to the real time power adjustment



#### SIMPLE AND INTUITIVE SETTINGS WITH THE COLOR CODING SYSTEM



#### PERIODONTICS



#### IMPLANT CARE



#### ENDODONTICS



#### SURGICAL ENDODONTICS



#### PROPHYLAXIS



#### CONSERVATIVE AND RESTORATIVE DENTISTRY



**BUY 1 x P5XS B.LED GET 1 x Newtron wHandpiece FREE**

## Your trusted OEM partner

Integrate Acteon's solutions in your treatment unit, choose ACTEON as your OEM partner with confidence.



### Specialty Consumables

- Disposable tips



### Imaging Solutions

- IO Camera

### Specialised Equipment

- Ultrasonics
- Polimerization
- Air polishing



**BUY 1 x Newtron OEM Scaler Kit GET 20% DISCOUNT**

# ACTEON NEWS

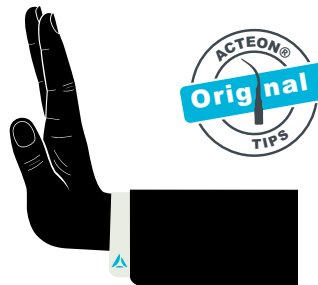
N° 15248

Caring People. Improving Lives

2024

**WARNING - Breaking news - WARNING**

**Stop**  
using competitors' tips  
with **ACTEON®** devices



**Choose only the ACTEON® Original Tips to get the full performance of your ACTEON® ultrasonic device**



Only ACTEON® Original Tips can guarantee optimal performance and safety of use with our ultrasonic devices.



ACTEON®'s liability and warranty of parts and accessories is voided when damages occur due to the use of non ACTEON® Original Tips.

Could seems financially interesting initially but more costly in the long term:

- 1- Tips need to be changed more often
- 2- Increased treatment time
- 3- Potential damage to the handpiece may require replacement



SATELEC A company of ACTEON® Group 17, avenue Gustave Eiffel Zone Industrielle du Phare 33700 MERIGNAC FRANCE  
Class IIa medical devices (GMED) - CE 0459 - Manufacturer: SATELEC® ACTEON® Group - France

PIEZOELECTRIC SURGERY IS POWERFUL ENOUGH  
TO CARRY OUT EXTRACTIONS AT THE SAME SPEED <sup>1</sup>  
AS ROTARY INSTRUMENTS!

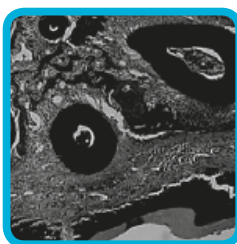
## PIEZOTOME

CUBE



**SUPERIOR  
OUTCOMES**

- Reduced pain
- Less analgesics
- Limited edema



**GREAT  
HEALING**

- Predictable
- Fast recovery
- Bone densification

Socket preservation<sup>9</sup>  
Safe for soft tissues  
Recommended for immediate  
implant placement  
No force needed  
50% less pain & swelling<sup>2</sup>  
98% less analgesics intake<sup>1</sup>

1, 2, 9 References available on file



**BUY** 1 x PIEZOTOME® CUBE (F50102), **GET** 1 x Extraction II Tip Kit (F87546) or 1 x Universal Tip Kit (F87539) **FREE**

## EMS Scaler Special Offers



1

### BUY 5, GET 1 FREE!! (MASSIVE SAVINGS!!)

\*Non-Optic – blue ring, LED – red ring,  
or Universal – black ring

\*Mix and match allowed.  
Free item equal to the value of lowest item.



2

### EMS No Pain Scaler handpieces (EN-061 & EN-041)

#### Call for best pricing!

\*excluding discounts that go below cost prices.  
\*copy of competitor quote is required for price-beat  
\*promotion on EN-041 while stock lasts.



3

### ASK US FOR SPECIAL PRICING ON EMS INSTRUMENTS



4

### EMS No Pain Piezon Scaler LED Kit

1x LED Scaler Handpiece,  
1x PS Instrument with Combi Torque Wrench  
and 4x spare LED light guides





# Leica M320 D Dental Microscope



## With Integrated 4K Camera

Enjoy better visualisation during surgical and non surgical dental procedures, benefit from increased physical comfort, and show your expertise to peers and patients with astounding 4K images.

Inspired by dentists - With the M320 dental microscope you can achieve better treatment results and optimise outcomes through high precision microdentistry. To help you share your expertise with patients and peers you can record your procedures in impressive 4K image and video quality.

Developed for dentists - The ergonomic microscope design of the M320 enhances your physical comfort and thus increases efficiency in different fields including restorative dentistry, endodontics, prosthodontics and aesthetic dentistry as well as periodontics and implantology.

Not all products or services are approved or offered in every market and approved labeling and instructions may vary between countries.



Call us  
for a  
demonstration

## PHYSICAL COMFORT INCREASES EFFICIENCY

Ensure you are sitting comfortably so that you can work without interruptions for repositioning yourself. Leica Microsystems offers a choice of objective lenses, binocular tubes, and ergonomic accessories that suit your body frame, specialty, and working preference.



### Binocular tube with 45° angle

Work in comfortable standard position with a fixed 45° viewing angle



### ErgoWedge for the 45° binoculars

Enjoy working more ergonomically with a tiltable viewing angle of 5–25°



### Binocular tube for 180° movement

Enhance comfort and flexibility through an even wider range of viewing angles



### ErgonOptic Dent accessory

Extends the reach of the microscope and allows to swivel the optics carrier to any angle



### Ultra-low binoculars for an upright posture

Work in a more compact position with your body and arms closer to the operating field

## Synea Fusion & Vision Promotion



**BUY 2  
GET 1  
FREE!!\***

**BUY 3  
GET 2  
FREE!!\***



synea

**ASK US  
FOR A  
QUOTE &  
SAVE!!**

\*Can Mix & Match, FREE item is equal to the lowest priced item.

## Ti-Max Z

**2 + 1 FREE\***

\*Free item of equal or lesser value.

**NSK Create it**

- Lightweight titanium body with Duragrip coating
- Also available in fittings for KaVo®, Dentsply Sirona®, W&H® (Z990/Z890 priced at RRP \$2,074, Z micro priced at RRP \$1,591)



MODEL **Z990L**  
ORDER CODE **PA23730001**

- Optic
- **ULTIMATE Power** 30-44w\*\*
- Std head: Ø 12.1 x 12.7 mm

**RRP | \$1,981** \*\*At 3 - 4.2 bar



MODEL **Z890L**  
ORDER CODE **PA23720001**

- Optic
- Power 28-41w\*\*
- Std head: Ø 10.6 x 10.8 mm

**RRP | \$1,981**



MODEL **Z micro (ultra-mini head)**  
ORDER CODE **PA2357**

- Optic
- Power 20w
- Micro head: Ø 9 x 10.8 mm
- For Short Shankburs

**RRP | \$1,381**

## S-Max M

**3 + 1 FREE\***

\*Free item of equal or lesser value.



MODEL **M900L**  
ORDER CODE **P1254**

- Optic
- Power 26w
- Std head: Ø 12.1 x 13.3 mm

**RRP | \$1,381**



MODEL **M800L**  
ORDER CODE **P1253**

- Optic
- Power 23w
- Mini head: Ø 10.6 x 12.4mm

**RRP | \$1,381**



MODEL **Pico**  
ORDER CODE **P1140**

- Optic
- Power 9w
- Ultra-mini head: Ø 8.6 x 9mm
- Used only with short shank burs

**RRP | \$1,381**

**Call us for a quote on your required handpiece models today!**



**Luke Williams**  
0421 493 876  
NSW/ACT/QLD



**Lee O'Bryan**  
0427 758 650  
Greater Sydney/QLD



**Michelle De Blasis**  
0422 391 596  
VIC/TAS/QLD

