



presidential

January - March 2025

Q1

Specials



**MASSIVE
SAVINGS ON
SURGERY SETUP
DEALS!**

**EXISTING
SURGERY
REFRESH DEALS
UNDER \$20K*!**

**ASK US ABOUT
IMAGING
& STERILIZATION
PACKAGES!**



presidential
dental | medical | veterinary



Luke Williams
0421 493 876
NSW/ACT/QLD



Lee O'Bryan
0427 758 650
Greater Sydney/QLD



Michelle De Blasis
0422 391 596
VIC/TAS/QLD



"Michelle De Blasis is the rep who we dealt with. She is professional and super efficient.

It made buying our A-dec chair a smooth operation, even with some changes such as refurbishing an existing chair and relocation. To put things into perspectives, a competitor company only got back to us regarding our A-dec chair purchase enquiry a few weeks after our chair (sold by Michelle of Presidential) was installed! Totally happy."

Dr Cindy Nguyen



"Incredible service from the very start by Michelle and Presidential Team. Michelle is exceptionally professional and organised and had all our orders in a timely manner. The servicing and installation team led by Lars and Darcy were fantastic at liaising with the builders directly and had everything installed and good to go without any hassle.

Highly recommend!"

Dr Shrey Surya



"I have had amazing service and quality workmanship from the whole service installation and sales team at Presidential!!! I had a compressor and suction break down and was unable to work, two technicians worked to get me up and running with dedication, knowledge, and great service!! They were amazing and I am very grateful and happy!! It's nice to know as dentists that patients can turn to us; and we too can turn to a team like this for excellent care!! Michelle from the sales team is very dedicated and committed to her job and definitely cares!! I totally recommend them to every dentist in Australia!!!"

Dr Nicola Stephen



"I wholeheartedly recommend Presidential as a dental supplier, and I cannot speak highly enough of Lee's exceptional professionalism, honesty, promptness and patience. Her expertise, dedication and unwavering support have been instrumental. I am grateful for her invaluable assistance and the outstanding service she has provided. Presidential and Lee have undoubtedly exceeded my expectations, and I am confident in their ability to deliver exceptional products and services to all their customers.

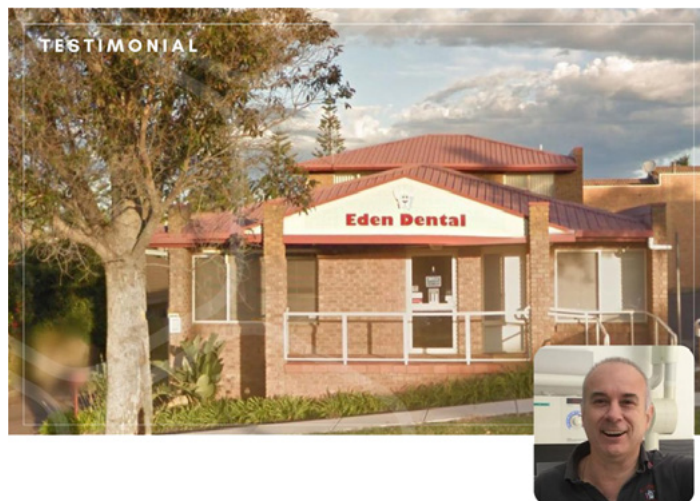
Thank you, Presidential, and a special thank you to Lee for your remarkable support!"

Dr Ben Lee



"We are using new Lisa VA-B and are very happy with the performance of the sterilizer and the customer service of Luke and Presidential Team."

Dental Embassy



"Luke Williams and his team at Presidential are a pleasure to deal with. From purchase to delivery and after sales support their customer service is next to none. I would highly recommend them to anyone looking to purchase equipment for their surgery."

Dr Gabriel Maratheffis



"I have been working with Presidential and A-dec for a number of years.

Presidential is always quick to get back to me, provides fantastic pricing and stays in regular contact. Presidential's service is always fantastic - from install to maintenance. My A-dec 500 chairs are completely reliable and provide outstanding comfort for my patients. If you are looking for new equipment contact Presidential and they will look after you!"

Dr Mehdi Rahimi, Chatswood



"Our surgery has been involved with many service companies over the years and Presidential has been the stand out from all the companies we have used before. The standard of service, prompt response and excellent sales service from Presidential is unprecedented. Thanks to Presidential Team!"

Dr Jason Pireh, Kellyville

Lisa Steriliser Package

- Lisa VA-B 22L Steriliser
- LisaSafe Traceability Godex Printer
- LisaSafe Consumables Kit
- LisaSafe QR code scanner



**SAVE
\$6,022**

RRP \$20,534
SPECIAL PRICE:

\$14,512

*Showroom Pricing also available without LisaSafe package - POA

**Image for illustration purposes only*

Durr Hygoclave 50 Steriliser Package

- Durr Hygoclave 50 22L Steriliser
- HygoPrint Easy Traceability Printer



**SAVE
\$4,842**

RRP \$18,170
SPECIAL PRICE:

\$13,328

**Image for illustration purposes only*

Melag 43B+ Steriliser

- Melag 43B+ 23L Steriliser
- Includes MelaFlash Cycle datalogger



**SAVE
\$4,529**

RRP \$22,645
SPECIAL PRICE:

\$18,116

**Image for illustration purposes only*

PSPIX - Phosphor Plate Digital X-ray Scanner

- Most compact phosphor plate scanner on the market - ideal for chairside x-ray scanning
- Comes with 2x Size 1 and 2x Size 2 image plates
- Standard or High definition modes
- Networks up to 10 surgery rooms
- Quick Scanning times



**SAVE
\$3,146**

RRP \$15,730
SPECIAL PRICE:

\$12,584

**Image for illustration purposes only*

PLEASE CALL 1800 773 743
TO BOOK YOUR SHOWROOM APPOINTMENT
AT THE NEWCASTLE OR SYDNEY FACILITIES

DEPOSIT ONLY!
RESERVE NOW,
PAY LATER.

THERE'S NEVER BEEN A BETTER TIME TO EXPERIENCE & **SAVE ON A-DEC**

a|dec
reliablecreativesolutions

A-DEC 400

\$45,239

Save up to
\$24,892!!

PACKAGE INCLUDES:

- A-dec 400 chair with standard headrest
- Sewn Upholstery FUSCHIA
- Knob headrest
- A-dec 300 Traditional delivery
- Without Spittoon
- 521/522 Stools
- NLZ electric motor
- 551 Assistants instrumentation
- A-dec 500 LED light

**PROMO
APPLIES TO
CLEARANCE
STOCK**



A-dec 300 Radius – Traditional

- A-dec 300 Radius chair with Knob headrest
- Seamless/FORMED Upholstery – SKY BLUE colour
- Traditional delivery system with fibre-optics module, Fibre-optic high speed line, Slow speed line with fibre-optic NLZ electric motor, Deluxe touchpad, Standard size tray and holder
- Satelec Newtron scaler built-in kit with 3x scaler tips
- Assistant Suction and Instrumentation
- EP valve and adaptor
- Cuspidor and Support centre
- Neovo Medical Grade Screen – 22"
- 381 Monitor mount
- 572L Radius-style LED dental light
- 421/422 Doctor and Assistant stools

**PURCHASE
A-DEC 300
AT 2022 PRICES!
- WHILE STOCKS
LAST!**



**SAVE
\$14,339**

RRP \$57,596
SPECIAL PRICE:

\$43,197

**Image for illustration purposes only*

**ORDER
NOW FOR NEXT
SHOWROOM
PACKAGE
RELEASE**

PLEASE CALL 1800 773 743
TO BOOK YOUR SHOWROOM APPOINTMENT
AT THE NEWCASTLE OR SYDNEY FACILITIES

MASSIVE STOCK CLEARANCE SALE!

*Prices slashed on existing stock – while stock lasts. *All Clearance items must be paid in full to secure the order. *Clearance offers can not be combined with any other package offers. *Some items are display stock from our showroom. These come with full warranty term starting from date of sale to customer.

IMAGING EQUIPMENT



Vatech EZRAY Air W 600

\$6,000

SAVE \$1,200!!



Vatech VSP

\$9,000

SAVE \$1,890!!



ScanX Edge

\$7,530

SAVE \$3,633!!



ScanX Duo Touch

\$15,000

SAVE \$5,449!!



SoproLife intra-oral camera
(comes with dock**)

\$4,529

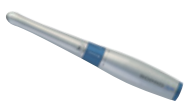
SAVE \$5,449!!



SoproCare intra-oral camera
(comes with dock*)

\$4,529

SAVE \$5,449!!



Sopro717 intra-oral camera
(comes with dock**)

\$3,558

SAVE \$899!!



Sopr617 intra-oral camera
(comes with dock***)

\$2,096

SAVE \$524!!



ProVecta HD intra-oral X-ray

\$6,976

SAVE \$4650!!

**Dock type supplied to be based on stock availability – either direct dock, or mini dock

AIR MOTORS



AM-25 RM

\$634

SAVE \$271!!



AM-25 LRM

\$1,273

SAVE \$848!!



AM-25 LT

\$1,495

SAVE \$641!!

HANDPIECES



TK-98 LM

\$1,490

SAVE \$993!!



TG-98 LN

\$976.80

SAVE \$651.20!!



RK-97 L

\$1,618.80

SAVE \$1,079.20



TK-98 L

\$1,480.80

SAVE \$987.20!!



WP-64 M

\$430.20

SAVE \$286.80!!



WK-56 LTS

\$1,102.80

SAVE \$735.20!!



WK-56 LT

\$1,102.80

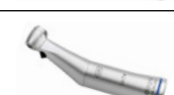
SAVE \$735.20!!



WG-99 A

\$1,039.80

SAVE \$693.20!!



WE-56 LED G

\$672

SAVE \$448!!



TE-98 LM

\$975.60

SAVE \$650.40!!



S-11 Surgical Straight Handpiece

\$1,192

SAVE \$511!!

Ask us about stock A-dec Upholstery sets at massive discounts!

BUY A CHAIR PACKAGE* & **SAVE**

a dec
reliablecreative**solutions**

**DÜRR
DENTAL**
THE BEST, BY DESIGN



+ FREE



OFFER 1

A Durr integrated
VistaCam iX
HD Smart Camera
PLUS
interchangeable
diagnostics heads

OR



OFFER 2

**SAVE
\$10,000**
off Hygoclave
50 Plus (22L)
Autoclave package

A-DEC 300 PRO DEALS

**INTRO
PACKAGE
\$36,250**

INCLUDES

- 311B Pro Compatible Chair
- Formed Upholstery
- 332 Pro delivery with CP5 Touchpad
- 3-position Control Block
- 351/S/3 Assistant's instrumentation
- 372 LED Light

**SIMPLIFIED
PACKAGE
\$47,990**

INCLUDES

- 311B Pro Compatible Chair
- Formed Upholstery
- 332 Pro delivery with CP5i Touchpad
- 4-position Control Block with electric motor
- 551STA Assistant's instrumentation
- 372 LED Light



Hygoclave Autoclaves

Hygiene is in our DNA.
The Hygoclave 50 and 40 series.

The Hygoclave 50 and 40 series offers dental practices a professional Class B solution that combines impressive performance with a well thought-out operating concept for maximum efficiency and exceptional user friendliness. It is designed to cope effortlessly with tough day-to-day working environments.

OFFER 1

CHOOSE A
**CHAIR
PACKAGE***
WITH AN
**AUTOCLAVE
BUNDLE**
**SAVE
\$10,000**



OFFER 2

**HYGOCLAVE 50 PLUS
PACKAGE 22 Litre**
WAS \$19,579
NOW \$15,995
SAVE \$3,584



Hygoclave 50 Plus + Printer + VistaSoft Monitor Software

OFFER 3

**HYGOCLAVE
40 PLUS PACKAGE**
22 Litre
WAS \$17,398
NOW \$13,995
SAVE \$3,403



+
Printer



**HYGOCLAVE
40 PACKAGE**
17 Litre
WAS \$16,307
NOW \$12,595
SAVE \$3,712

VistaSystem Savings!

Your Complete Intra and Extra-oral Imaging Solution

The Durr VistaSystem offers an imaging solution that's not just about clarity, it's about delivering certainty with every scan.



OFFER 1

BUY AN A-DEC CHAIR PACKAGE* AND CHOOSE...

A FREE
VistaCam iX
HD Smart
Camera **PLUS**
diagnostics heads



OR SAVE \$10,000 OFF

A Durr Hygoclave 50 Plus (22L) Autoclave package



OFFER 2

PURCHASE AN OPG OR CBCT SYSTEM

SAVE \$4,000

on VistaScan Mini View 2.0 Image Plate Scanner



Vistascan Mini has been known for its unparalleled image quality for the past 20 years. The unit keeps evolving, now with a new design and AI image processing features, helping you streamline your intra-oral X-ray process.



OFFER 3

BUY A VISTASCAN MINI VIEW 2.0 GET A FREE IQ CONSUMABLE PACK

VALUED AT \$854

Pack contains:

- VistaScan Image Plate, Size 2 (Pack of 2)
- VistaScan Light protection cover Plus Size 2 (Pack of 1,000)



VISTACAM iX

SAVE \$1,000

off any benchtop or integrated VistaCam iX HD Smart or iX camera
Brilliant images and excellent camera diagnosis

- One camera, many options
- Excellent image quality
- Software analysis for detection of caries lesions and visualisation of plaque through fluorescence
- Diagnostic aid for detection of proximal caries, without radiation exposure • Multi-user capability.

OFFER 4

iX HD Smart

iX



OFFER 5

VISTAINTRA DC: X-RAY GENERATOR

WAS \$7,645 | NOW \$7,145 SAVE \$500

- Simple operation and accurate positioning
- Versatile arm lengths to suit your surgery
- Reliable with long service life • Adjustable mA and kV
- 0.4 mm Focal Spot.

Lisa

Promotion Package*

Traceability kit includes:
Consumable Kit
Label printer
QR Bar code reader

CODE: PLUS_Discount LISA



lisa

SAVE over \$5,000 with a Lisa steriliser package from Presidential!

**Free
Traceability
Kit**

Synea Fusion & Vision

Promotion



**BUY 2
GET 1
FREE!!***

**BUY 3
GET 2
FREE!!***

Clinic
synea

**ASK US
FOR A
QUOTE &
SAVE!!**

**Can Mix & Match, FREE item is equal to the lowest priced item.*



Ask us about Surgery Setup deals with W&H handpieces, handpiece oilers, Surgical Consoles & Surgical Handpieces!!



Ask us for a Surgery Setup quote with Massive savings!!



20% OFF

Alegria handpieces



20% OFF

Implantmed & Piezomed module



20% OFF

Surgical handpieces



NSK Create it Special Offers

JANUARY-MARCH 2025



Turbines

Experience Power
FREE TRIAL
Scan/click here to get started



Ti-Max Z

HIGH PERFORMANCE TURBINES

2 + 1 **FREE***

NEW ULTIMATE POWER for quicker preps and cutting Zirconia

- Lightweight titanium body with Duragrip coating
- Also available in fittings for KaVo®, Dentsply Sirona®, W&H® (Z990/Z890 priced at RRP \$2,074, Z micro priced at RRP \$1,591)



MODEL **Z990L**
ORDER CODE **PA23730001**

- Optic
- **ULTIMATE Power** 30-44w**
- Std head: Ø 12.1 x 12.7 mm

**At 3 - 4.2 bar

RRP | **\$1,981**



MODEL **Z890L**
ORDER CODE **PA23720001**

- Optic
- Power 28-41w**
- Std head: Ø 10.6 x 10.8 mm

RRP | **\$1,981**



MODEL **Z micro (ultra-mini head)**
ORDER CODE **PA2357**

- Optic
- Power 20w
- Micro head: Ø 9 x 10.8 mm
- For Short Shank burs

RRP | **\$1,381**

*Free item of equal or lesser value.

S-Max M

3 + 1 **FREE***

- Stainless steel
- Enhanced power
- Quattro water spray



MODEL **M900L**
ORDER CODE **P1254**

- Optic
- Power 26w
- Std head: Ø 12.1 x 13.3 mm

RRP | **\$1,381**

- DIY cartridge change
- Clean head system



MODEL **M800L**
ORDER CODE **P1253**

- Optic
- Power 23w
- Mini head: Ø 10.6 x 12.4mm

RRP | **\$1,381**

- Also available in fittings for KaVo®, Dentsply Sirona®, W&H® (priced at RRP \$1,591)



MODEL **Pico**
ORDER CODE **P1140**

- Optic
- Power 9w
- Ultra-mini head: Ø 8.6 x 9mm
- Used only with short shank burs

RRP | **\$1,381**

*Free item of equal or lesser value.

All prices as listed. Valid until 31 March 2025. Not to be used in conjunction with any other NSK promotions. All prices are as quoted in AUD and include GST.

Contra Angles

SCAN/CLICK
for more info



Ti-Max Z

3 + 1 FREE*

- Lightweight external titanium body
- **Optic with internal water**
- Small head/narrow neck
- **Unique spray switch on Z95L, Z45L**



MODEL **Z95L**
ORDER CODE **C1034SW**

- Optic
- 1:5 Increasing+Spray switch
- Head size Ø 8.9 x 13.4mm

RRP \$2,121



MODEL **nano95LS**
ORDER CODE **C1099**

- Optic
- 1:5 Increasing
- 10% shorter & lighter than Z95L
- Head size Ø 8.9 x 13.4mm

RRP \$1,909



MODEL **Z45L**
ORDER CODE **C1064**

- Optic
- 1:4.2 Increasing+Spray switch
- 45° head
- Head size Ø 9.6 x 14.5mm
- For regular or extra long (25mm) FG burs

RRP \$2,263



MODEL **Z25L**
ORDER CODE **C1038**

- Optic
- 1:1 Direct Drive
- Head Size Ø 8.9 x H 13.7 mm
- Single Water Spray
- For CA burs

RRP \$1,491

*Free item of equal or lesser value.

S-Max M

3 + 1 FREE*

- Stainless steel
- **All with internal water**
- Choice of optic & non-optic



MODEL **M95L**
ORDER CODE **C1023**

- Optic
- 1:5 Increasing
- Head size 10 x H.14.6mm

RRP \$1,763



MODEL **M25L**
ORDER CODE **C1024**

- Optic
- 1:1 Direct Drive

RRP \$1,353



MODEL **M15L**
ORDER CODE **C1025**

- Optic
- 4:1 Reducing

RRP \$1,647



MODEL **M65**
ORDER CODE **H1008**

- Non-Optic
- 1:1 Straight

RRP \$818

MODEL **M95**
ORDER CODE **C1026**

- Non-Optic
- 1:5 Increasing
- Head size 10 x H.14.6mm

RRP \$1,405

MODEL **M25**
ORDER CODE **C1027**

- Non-Optic
- 1:1 Direct Drive

RRP \$949

MODEL **M15**
ORDER CODE **C1028**

- Non-Optic
- 4:1 Reducing

RRP \$1,334

*Free item of equal or lesser value.

All prices as listed. Valid until 31 March 2025. Not to be used in conjunction with any other NSK promotions. All prices are as quoted in AUD and include GST.

Contra Angles

SCAN/CLICK
for more info



FXm

4 + 1 FREE*



MODEL **FX65m**
ORDER CODE **H1014001**

- Non-Optic Straight
- 1:1 Direct Drive
- Push button chuck
- No internal water

RRP \$461



MODEL **FX25m**
ORDER CODE **C1052001**

- Non-Optic Contra-angle
- 1:1 Direct Drive
- Push button chuck
- No internal water

RRP \$462



MODEL **FX57m**
ORDER CODE **C1054001**

- Non-Optic Prophyl Contra-angle
- 4:1 speed reducing
- Max speed 1,000 rpm
- Brushes/Cups: Screw in

RRP \$508



MODEL **FX22**
ORDER CODE **C1129091**

- Non-Optic Contra-angle
- 1:1 Direct Drive
- Latch-type chuck
- No internal water

RRP \$279

*Free item of equal or lesser value.

Maintenance

SCAN/CLICK
for more info



iCare

HANDPIECE LUBRICATION UNIT

- Precise dosing – less waste, better care
- Connects to 6mm airline, 5-6 bar

MODEL **iCare C2 Type**
ORDER CODE **Y1002787**

RRP \$5,489

MODEL **iCare C3 Type**
ORDER CODE **Y1002788**

RRP \$5,863



NSK Eco Aware!



Buy iCare C2 or C3 and get **\$2,304** worth of **FREE Handpieces + adaptors**

Handpieces include: 1 x S-Max High-Speed, 1 x FX65M and 1 x FX25M, PLUS Free High-Speed Adaptors: 2 x Adaptors for iCare C2, 1 x Adaptor for iCare C3.

All prices as listed. Valid until 31 March 2025. Not to be used in conjunction with any other NSK promotions. All prices are as quoted in AUD and include GST.



Surgical

SCAN/CLICK
for more info



Surgic Pro and Surgic Pro2

MICROMOTORS FOR IMPLANTS / ORAL SURGERY

Surgic Pro Includes:

- Control unit
- Motor/Cord
- 20:1 Implant contra angle
- Foot control
- 2 year warranty



MODEL **Surgic Pro (optic)**

ORDER CODE **Y1001933**

RRP **\$8,726**

Surgic Pro2 Includes:

- Control unit
- Motor/Cord
- 20:1 Implant contra angle
- Wireless foot control
- Bluetooth connectivity to VarioSurg & Osseo100+
- 2 year warranty



MODEL **Surgic Pro2 (optic)**

ORDER CODE **Y1500511**

RRP **\$8,726**

Buy Surgic Pro or Surgic Pro 2 Optic and choose from
FREE Additional Micromotor & Cable OR iSD900 OR 2 x Ti-Max X-SG65L

Micromotor



Optic Micromotor Cable for
Surgic Pro2 Optic

MODEL **SGL80M**

ORDER CODE **Y1004211**

RRP **\$4,464**

Optic Micromotor Cable for
Surgic Pro Optic

MODEL **SGL70M**

ORDER CODE **E1023001**

RRP **\$4,464**

iSD900



MODEL **iSD900**

ORDER CODE **Y1001358**

RRP **\$3,604**

Ti-Max X-SG65L



MODEL **Ti-Max X-SG65L**

ORDER CODE **H1009**

RRP **\$2,371**

All prices as listed. Valid until 31 March 2025. Not to be used in conjunction with any other NSK promotions. All prices are as quoted in AUD and include GST.

Surgical

SCAN/CLICK
for more info



VarioSurg3

VARIOSURG 3 ULTRASONIC BONE SURGERY SYSTEM

50% OFF for existing SurgicPro or SurgicPro2 users

Features:

- Control unit
- LED handpiece with 2m cord
- FC-78 foot control
- Sterilisation cassette
- Handpiece stand
- Irrigation tube (5 pieces)
- Other accessories

MODEL **VarioSurg 3**
(without foot control)
ORDER CODE **Y1002248**

RRP **\$10,060**

MODEL **VarioSurg 3**
ORDER CODE **Y1002726**

RRP **\$12,468**



iCart

15% OFF RRP

The NSK iCart Duo holds both the VarioSurg3 & Surgic Pro2. Use one foot control and link together with the Link Module.

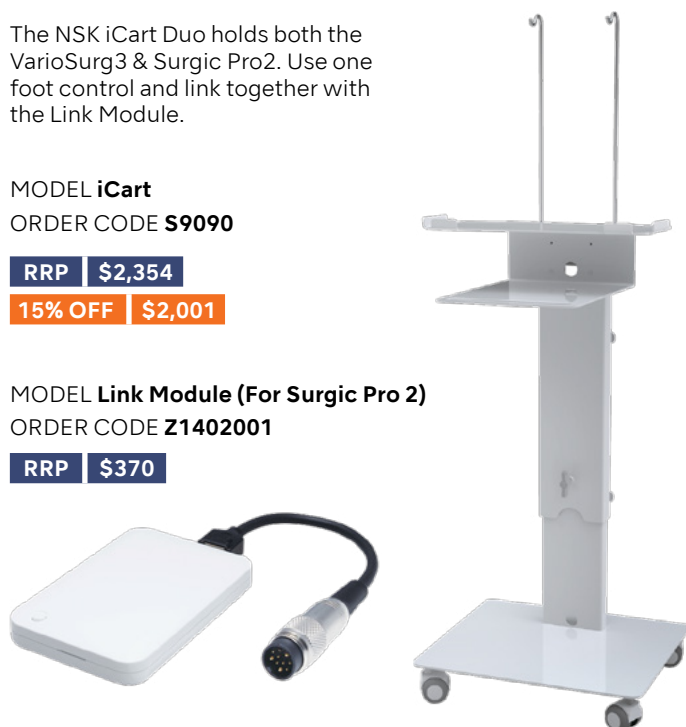
MODEL **iCart**
ORDER CODE **S9090**

RRP **\$2,354**

15% OFF **\$2,001**

MODEL **Link Module (For Surgic Pro 2)**
ORDER CODE **Z1402001**

RRP **\$370**



VarioSurg Tips

2 + 1 FREE*

SCAN/CLICK
to check out our full
range of VarioSurg tips



Tip Holder sold separately

*Free item of equal or lesser value.

Oral Hygiene

Prophy-Mate neo

SUPRAGINGIVAL POWDER THERAPY

ORDER CODE **Y135029** for NSK PTL coupling

- Compact, lightweight & portable
- Includes 60° and 80° nozzles
- 360° rotation
- Includes 6 sachets of FLASH pearl® powder
- Also available in fitting for KaVo®, Dentsply Sirona®, W&H® (priced at RRP \$1,809)

RRP | \$1,696



SCAN/CLICK
for more info



Buy both the Prophy-Mate and the Perio-Mate and get 25% off RRP for each



+ **FREE** box of **FLASH pearl** or **SOFT pearl Powder**



FLASH pearl

- Calcium carbonate (54µm) based powder for stain removal

4 x 300 g bottles

ORDER CODE **Y900698**

RRP | \$313



SOFT pearl

- Glycine based powder (65µm), ideal for moderate staining. Water soluble, making clean up easier

4 x 250 g bottles

ORDER CODE **Y1500721**

RRP | \$326

NEW



SCAN/CLICK
for more info

Perio-Mate

SUBGINGIVAL POWDER THERAPY / BIOFILM REMOVAL

CODE **Y1002654** for NSK coupling

- Subgingival version of ProphyMate
- Eradicates biofilm in just 20 seconds
- Powder flow adjuster for delicate pockets
- Includes flexible plastic nozzle tips for deeper pockets
- Packed in a handy case with 160g powder
- Also used supragingivally on moderate staining and around composite restorations/orthodontic brackets
- Also available in fitting for KaVo®, Dentsply Sirona®, W&H®

RRP | \$1,696

SCAN/CLICK
for more info



Buy both the Prophy-Mate and the Perio-Mate and get 25% off RRP for each



+ **FREE** box of **Perio-Mate Powder and Nozzle Tips**

FREE



MODEL Perio Mate Powder

ORDER CODE **Y900938**

- Glycine based powder (25µm)
- 2 x 160 g bottles

RRP | \$313



MODEL Perio Mate Nozzle Tips

ORDER CODE **Y1002741**

- Pack of 40

RRP | \$125



POWDER THERAPY GUIDE



SCAN/CLICK
to download.

Oral Hygiene

Varios Combi Pro IPIEZO ENGINE®

TWO ORAL CARE SYSTEMS IN ONE!

FREE Perio Set with Varios Combi Pro Basic Set

- Combines ultrasonic treatments and powder therapy in one unit
- Comes with a detachable Prophylaxis chamber
- Detachable Perio chamber available as an optional extra

MODEL **Varios Combi Pro Basic Set**

ORDER CODE **Y1004194**

RRP \$7,856

MODEL **Varios Combi Pro Perio Set**

ORDER CODE **Y1003042**

RRP \$2,839

Ultrasonic

SCAN/CLICK
for more info



Powder Therapy



Perio & Prevention

SCAN/CLICK
to check out our full
range of Scaler tips



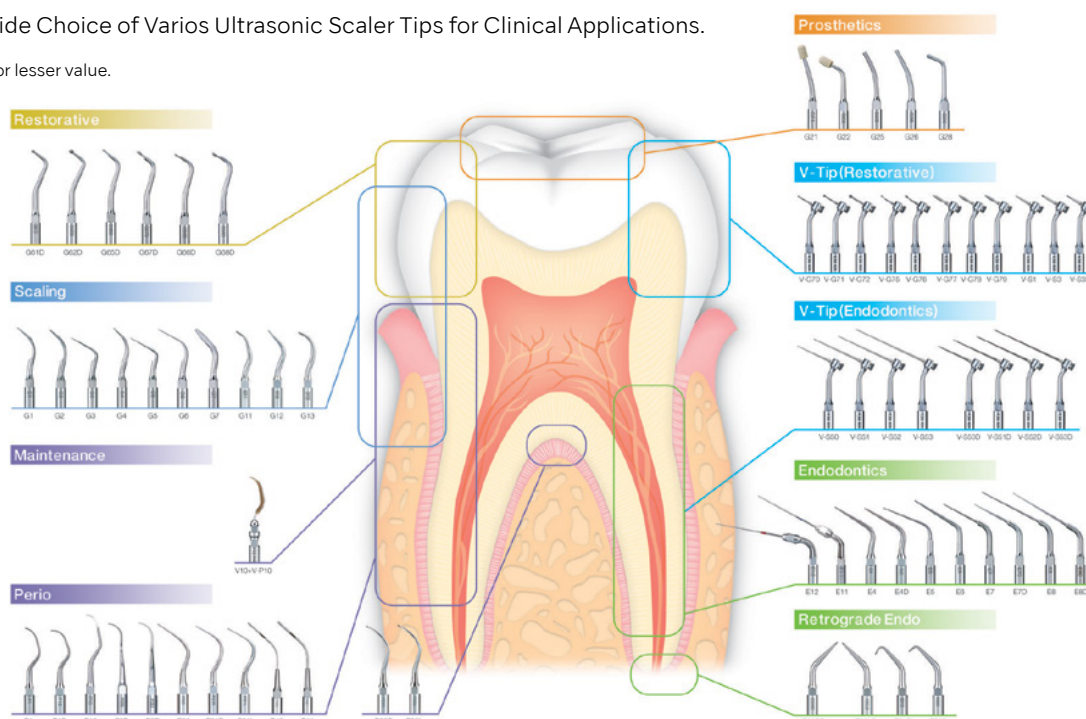
Scaler Tips

TIPS FOR VARIOS ULTRASONIC SCALER

2 + 1 FREE*

NSK offers a Wide Choice of Varios Ultrasonic Scaler Tips for Clinical Applications.

*Free item of equal or lesser value.



Endodontics

SCAN/CLICK
for more info



Endo-Mate

ENDO-MATE DT2

The ENDO-MATE DT2, compatible with major Ni-Ti file brands, features a pre-programming function for efficient use of various file protocols. A lightweight, compact control unit with a rechargeable battery for enhanced mobility. The slim, lightweight handpiece ensures comfortable handling and high performance.

Includes:

- Control unit
- Motor and cord
- MP-F20R head (20:1)
- Handpiece stand
- AC adaptor

Specifications:

- Power Supply 230V 50/60 Hz and Battery pack
- Number of Programs 9
- Max Torque 7 Ncm (when using 20:1 head)
- Speed range 100-13,000 min-1 (With 20:1, 1:1 geared heads)
- Charge/Continuous use 5 h / 2 h (depending on workload)
- Dimensions W 93 x D 147 x H 100 (mm)
- Weight Unit 440 g / Motor handpiece and Cord 95g

MODEL **Endo-Mate DT2**

ORDER CODE **Y1004230**

RRP **\$2,348**



ENDO-MATE TC2

The Cordless ENDO-MATE TC2 Endodontic Handpiece enhances safety and efficiency with advanced torque control, auto-reverse, and a slim design for improved visibility. It features programmable settings, dual alarm sounds, and compatibility with most Ni-Ti files. An integrated LCD panel and the ability to combine with an Apex locator facilitate precise treatments. The device includes a quick 90-minute non-contact charger for fast recharging.

ENDO-MATE TC2 includes:

- MP-F16R Head
- ENDO-MATE TC2 Motor
- Battery Charger

ENDO-MATE TC2 MPA includes:

- MPA-F16R Head
- ENDO-MATE TC2 Motor
- Battery Charger

Specifications:

- Power Supply 230V 50/60 Hz and Battery pack
- Number of Programs 9
- Max Torque 7 Ncm (when using 20:1 head)
- Speed range 100-13,000 min-1 (With 20:1, 1:1 geared heads)
- Charge/Continuous use 5 h / 2 h (depending on workload)
- Dimensions W 93 x D 147 x H 100 (mm)
- Weight Unit 440 g / Motor handpiece and Cord 95g

MODEL **ENDO-MATE TC2**

ORDER CODE **Y1001027**

RRP **\$2,263**

MODEL **ENDO-MATE TC2 with MPA**

ORDER CODE **Y1001028**

RRP **\$2,716**



Buy ENDO-MATE DT2 or ENDO-MATE TC2 and get **iPexII 50% OFF**

iPexII

APEX LOCATOR

MODEL **iPexII**

ORDER CODE **Y1002208**

RRP **\$1,696**

SALE PRICE **\$848***



*When you purchase either an ENDO-MATE TC2 or ENDO-MATE DT2 Complete set.

NSK Create it

Setup your new surgery with Presidential and SAVE!!

BUNDLE 1

- 2 x Melag PRO LINE 23B+
- MelaTherm 10
- MelaTherm accessories:
Flex Baskets 2 and 3,
Small parts container,
upright instrument
compact
- Meladem 53



Receive
\$2,500 off RRP
with this
bundle!!

BUNDLE 2

- 2 x Melag 44B+ Evolution
- MelaTherm 10 Evolution
- MelaTherm accessories:
Flex Baskets 2 and 3,
Small parts container,
upright instrument
compact
- Meladem 53



Receive
\$3,500 off RRP
with this
bundle!!

Ask us about special pricing on MelaSTORE, MelaTRACE and MelaSEAL!

**Contact us today to see how much you can save
on your new Steri Room Equipment Package!**

Enbio Pro & Enbio S

enbio®

Enbio sterilisers are up to 6 times smaller and 3 times lighter than a typical class-B / vacuum autoclave. But when it comes to work efficiency, they keep up the pace.

Superfast sterilisation

Up to 4 times faster cycle time than the typical autoclave.

Perfectly dry pouches in no time

Enbio S sterilises a load of wrapped instruments in just 15 minutes (Enbio Pro – 18 minutes).

Emergency sterilisation

In case of emergency, you can sterilise unwrapped instruments for immediate use in just 7 minutes.

Simple

Enbio is so simple to install and operate that it takes longer to explain how simple it is.

Inaudibly silent

Enbio autoclaves work unbelievably silent. Wherever you use it, nobody will notice it's working.

Enbio Magic Filter: forget about water

Imagine a race car covering a long distance on a teaspoon of fuel. Enbio autoclaves are like that. With Enbio Magic Filter as a standard equipment, they can run up to 1000 processes on just 1 litre of demineralised water. No tap or sink required.

Enbio S. Speedmaster.

Enbio S is compact to fit even a cramped space. Unbelievably short process times will save your procedure in emergency, or allow sterilisation of the instruments as you go, between patients.

Enbio PRO. Small foot. Big space.

Enbio PRO is an ideal solution as a basic workhorse in a small practice. Superfast sterilisation and room to hold most of the instruments, including popular implant cassettes.



SPECIAL PRICING!!

Enbio Standard **\$4,500** **SAVE \$557.44!**

Enbio Pro **\$5,500** **SAVE \$569.94!**



Setting up a **New Practice?**
We've got you!

Get Full Digital Solution
with **vatech**!



vatech australasia

TRADE UP.

Want to Know
the **VALUE** of
your old OPG?



vatech australasia

Contact Presidential
for details:
1800 773 743

Vatech EzRay Air Portable

vatech

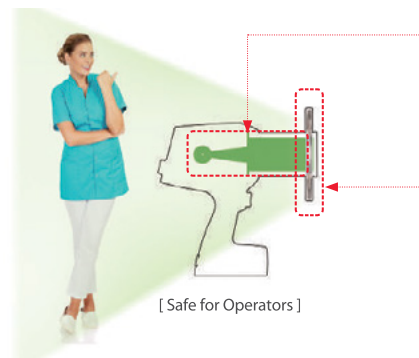
WEIGHT INNOVATION WITH CNT (CARBON NANO TECHNOLOGY)

The world's first dental application of Carbon Nano Technology.

The EzRay Air Portable is a lightweight portable x-ray device that is designed for easy handling and stable positioning, delivering optimal image quality for your intra-oral x-ray images.



DOUBLE SCATTER SHIELD DESIGN FOR OPERATOR SAFETY



INTERNAL SHIELDING

The internal radiation shielding is perfectly designed to protect the operator from radiation leakage.

EXTERNAL BACKSCATTER SHIELDING

Exposure to radiation results from the beam interacting with the surface of the patient, causing radiation to bounce off as radiation scatters in different directions. The backscatter shield significantly reduces the amount of radiation being reflected.

LOWER COOLDOWN TIMES, FASTER WORKFLOW

The EzRay Air Portable's unique carbon-nano technology efficiencies, which are not available in traditional x-ray generation methods, means there is a 75% reduction in cool-down time between shots, when compared to leading competitor's devices. This allows users to spend less time waiting for their x-ray to be ready and more time diagnosing and treating the patient.

NO WARMUP TIME

With no initial start-up delay for conventional x-ray sources to warm up, the EzRay Air Portable's Carbon Nano Technology optimizes workflow by allowing for quicker exposure after you initially turn on the device.



ASK US
FOR BEST
PACKAGE
PRICING!



Vatech EzScan

vatech

EXPAND YOUR DIGITAL WORKFLOW

CALL US
FOR SPECIAL
PRICING!



SIMPLE AND INTUITIVE INTERFACE FOR AN IMPROVED SCANNING EXPERIENCE

- Clear and intuitive interface for ease of use
- Essential functionality for many treatment plans



CASE SHARING

- EzScan Cloud is an easy-to-use file-sharing module for sharing digital impressions with the lab of your choice.



QUICK SCAN TIME FOR WORKFLOW EFFICIENCY

- Full arch scans in under 1 minute from start to finish



OPEN PLATFORM WITH NO CONTINUED FEES

- Easy to export to your treatment planning software or to send it to the lab of your choice
- Maximize your ROI with no continued fees



C50 Full HD Camera with diagnostic Aid Option



The **C50 Camera** with diagnostic-aid option is the only camera on the market to cover so many pathologies, featuring 4 integrated vision modes for seamless navigation.

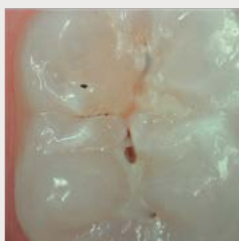
Remarkable clinical **vision**

- **Full HD resolution** for superior image quality
- **Autofocus** for a clear image
- 4 camera shots available**; macrovision, single tooth, smile and portait

Remarakable clinical **versatility**

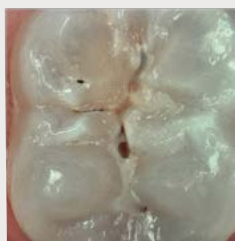


DAYLIGHT MODE



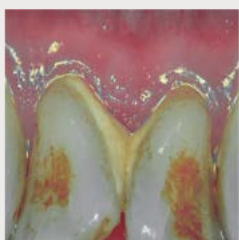
Record of **natural colors** for a better interpretation of tooth shade, pathology identification and patient follow-up.

DAYLIGHT+ MODE



High **contrasts** emphasizing anatomic fissures and details of the dentin structure/depth.

PERIO MODE



Enhancement of **dental plaque and gingival inflammation** thanks to chromatic amplification.

CARIO MODE



Caries **detection** by fluorescence technique by LEDs.

To order: C50 with diagnostic Aid S_C50_0001

C50 without diagnostic Aid S_C50_0002

Servotome II A New Impulse In Electrosurgery

2 YEARS WARRANTY

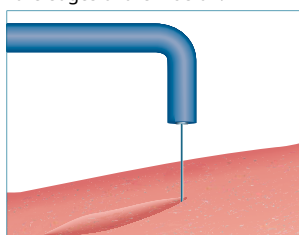
Experience the benefits of eletrosurgery

High frequency electrosurge or orthodontics, periodontics and other oral surgery with a single footswitch, a box with 10 electrodes & a conductive bracelet.



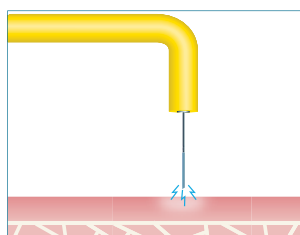
Electrosection

Vaporizing the tissue with the active electrode makes it possible to cut quickly without damaging the edges of the incision.



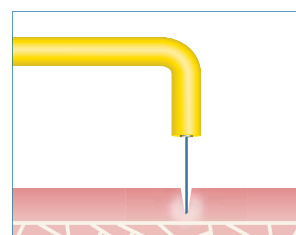
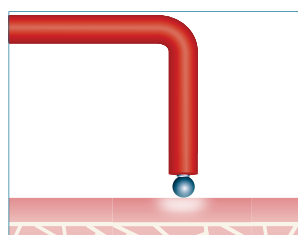
Fulguration

Makes it possible to surface coagulate gingival tissue while protecting the underlying layer.



Coagulation

Concentrating energy at the surface of a massive electrode makes it possible to diffuse the heat to the surrounding tissue and produce instantaneous hemostasis.



pspix2

By your side, to care for everyone

ACTEON® place its 20 years of expertise at your service and those of your patients.

The first simple and intuitive personal imaging plate scanner provides outstanding images and was designed to free practitioners from constraints.

Whatever your patient's morphology or pathology, the PSPIX®² adapts to your needs. As your personal assistant or in collaborative mode, experience high productivity without compromising on quality.

- 1 - **Striking Contrast** for a more reliable Diagnosis
- 2 - **The Smallest Scanner** on the market
- 3 - **The Fastest Scanner** on the market
- 4 - The **most intuitive** Scanner
- 5 - **Thin and flexible imaging plates** of various sizes for adaptability and outstanding patient comfort.



Special Offer Buy PSPIX2 \$12,990.00 RRP

sopix series



SMART DOSE

The ACE® technology protects the image from over exposure for an optimal quality without any effort.



SMART FLOW

Our sensors adapt to all clinical cases, all morphologies and all software, to provide you and your patients greater comfort.



SMART TECHNOLOGY

Our latest generation of digital sensors provide a sharp X-ray image for an easy reading of the different dental tissues.

Special Offer Buy 2 Sensors Get 10% Discount

x-mind prime 2

Easy Acquisition Effective Workflow

- X-MIND® prime has been engineered to make your daily operations faster and more efficient.
- Its effortless and lightweight wall mounting solution, allows to quickly install it almost everywhere, ensuring the maximum accessibility in any context, for both standing or sitting patients.
- Its clean and neat user interface with finely designed workflows is intended to fulfill your daily tasks with the minimum number of steps, to take you straight to the result.
- Easy. Effective. Simply X-MIND® prime.



FAQ...

What's the maximum FOV size available on X-MIND Prime Version 2?

The maximum FOV size available on X-MIND Prime 2 is 12x10 cm (h x Ø).

What's the highest resolution available on 3D images for X-MIND prime Version 2?

The highest resolution available on 3D images for X-MIND prime 2 is 72.5 µm.

Is it the highest resolution applicable to all the available FOVs?

The highest resolution of 72.5 µm is applicable only on 5x5 FOVs, for all the other 3D acquisition modalities the reference voxel size is 145 µm.

Is the 72.5 µm of voxel size a technical specification hardware or software based?

The voxel size is a technical specification hardware based.

Save up to 20% on CBCT & OPG While stocks last

Expand your surgical expertise

Highly powerful, reliable and versatile, Piezotome® Cube drastically improves the experience of implant and bone surgery procedures.

Give value to your treatments

The Cube's unmatched performance combined with the practitioner's clinical expertise facilitates accurate, faster, atraumatic and more predictable bone treatments.

Give the best to your patients

Provide compassionate clinical care with effective, predictable outcomes and enhanced healing with significantly less swelling, bleeding, pain and complications.

Socket preservation⁹
Safe for soft tissues
Recommended for immediate implant placement
No force needed
50% less pain & swelling²
98% less analgesics intake¹
1, 2, 9 References available on file



PIEZOTOME CUBE



**BUY 1 x PIEZOTOME® CUBE (F50102),
GET 1 x Extraction II Tip Kit (F87546) or
1 x Universal Tip Kit (F87539) FREE**

Ask Presidential for a demonstration

MINILED — SUPERCHARGED

Wavelength: 420 - 480 nm

Power: 2,000mW/cm²

Li-Ion battery

Handpieces: anodized aluminium

Delivered with a Mini LED handpiece, a battery, a battery charger, a power supply cord with european plug, a Ø7.5mm opalescent guide and an oval light shield



MINILED — ORTHO 2

Wavelength: 420 - 480 nm

Power: 3,000mW/cm²

Li-Ion battery

Handpieces: anodized aluminium

Delivered with a handpiece, a Ø5.5mm opalescent guide, a power supply + 4 plugs, a battery, a battery charger and an oval light shield



BUY 1 x Acteon Curing Light, GET 1 x Light Guide of your choice FREE

Acteon Ultrasonic Cleaners

HYGIENIC Aluminum control panel

SILENT PEHD cover

Stainless steel Structure / 2 years guarantee

Waterproof switch

ULTRASONICS CLEANER 5L - 280x180x260mm

- Usable volume 3.2L (PH500N)

ULTRASONICS CLEANER 5L WITH HEATER

20-60°C, 280x180x260mm

- Usable volume 3.2L with Heater (PH500CN)



Contact Presidential for Special Ultrasonic Cleaner Pricing

SOFTLY Amalgamator

Softly is very stable, extremely quiet, and very easy to clean and maintain. To guarantee totally safe operation, Softly is deactivated when you open the front cover to access the capsule. Softly is made entirely of injection-molded ABS material.

It complies with all electrical and mechanical safety standards.

**SAVE
10% OFF
RRP**



Contact Presidential for Special Amalgamator Pricing

x-mind unity

Versatility for "extended" possibilities

With its elegant style coupled to the cutting edge patented ACE® technology (Automatic Exposure Control) and the possibility to integrate SOPIX® Plug-In sensor, X-MIND® Unity brings the standards of protection, accuracy and comfort to a next level.

X-Mind® unity is available in different configurations allowing to fulfill any operational need. Arm lengths: 0.40 m, 0.80 m, 1.10 m - installation type: top wall, bottom wall, mobile stand.

\$6,996.00 RRP



BUY 2 x Plug N Sensors (Mix N Match Ok) GET 1 x Sopix 2 Plug In Dock FREE

x-mind
ac

x-mind
dc

\$4,998.00 RRP

Experience intuitive excellence

Designed to simplify daily operations, prioritise patient safety and enhanced dental workflows X-MIND AC/DC is the perfect choice for modern dental professionals.

Three arms lengths are available : 41 cm (16.2"), 82.5 cm (32.5") and 110 cm (43.5") and can be: Top wall mounted
Bottom wall mounted Dental unit, ceiling and mobile version are also available.

X-MIND DC available with
Remote Wireless Control

- No more wiring issues
- Cost effective
- Enhanced Convenience



Ask Presidential for more information, phone 1800 773 743

EMS Scaler Special Offers



1

**BUY 5,
GET 1 FREE!!
(MASSIVE SAVINGS!!)**

*Non-Optic – blue ring, LED – red ring,
or Universal – black ring

*Mix and match allowed.
Free item equal to the value of lowest item.



2

**EMS No Pain
Scaler handpieces
(EN-061 & EN-041)**

Call for best pricing!

*excluding discounts that go below cost prices.
*copy of competitor quote is required for price-beat
*promotion on EN-041 while stock lasts.



3

**ASK US FOR
SPECIAL PRICING
ON EMS INSTRUMENTS**



4

**EMS No Pain Piezon
Scaler LED Kit**

1x LED Scaler Handpiece,
1x PS Instrument with Combi Torque Wrench
and 4x spare LED light guides



Leica M320 D Dental Microscope



With Integrated 4K Camera

Enjoy better visualisation during surgical and non surgical dental procedures, benefit from increased physical comfort, and show your expertise to peers and patients with astounding 4K images.

Inspired by dentists - With the M320 dental microscope you can achieve better treatment results and optimise outcomes through high precision microdentistry. To help you share your expertise with patients and peers you can record your procedures in impressive 4K image and video quality.

Developed for dentists - The ergonomic microscope design of the M320 enhances your physical comfort and thus increases efficiency in different fields including restorative dentistry, endodontics, prosthodontics and aesthetic dentistry as well as periodontics and implantology.

Not all products or services are approved or offered in every market and approved labeling and instructions may vary between countries.



Call us
for a
demonstration

PHYSICAL COMFORT INCREASES EFFICIENCY

Ensure you are sitting comfortably so that you can work without interruptions for repositioning yourself. Leica Microsystems offers a choice of objective lenses, binocular tubes, and ergonomic accessories that suit your body frame, specialty, and working preference.



Binocular tube with 45° angle

Work in comfortable standard position with a fixed 45° viewing angle



ErgoWedge for the 45° binoculars

Enjoy working more ergonomically with a tiltable viewing angle of 5–25°



Binocular tube for 180° movement

Enhance comfort and flexibility through an even wider range of viewing angles



ErgonOptic Dent accessory

Extends the reach of the microscope and allows to swivel the optics carrier to any angle



Ultra-low binoculars for an upright posture

Work in a more compact position with your body and arms closer to the operating field



Synea Fusion & Vision Promotion



**BUY 2
GET 1
FREE!!***

**BUY 3
GET 2
FREE!!***



synea

**ASK US
FOR A
QUOTE &
SAVE!!**

*Can Mix & Match, FREE item is equal to the lowest priced item.

Ti-Max Z

2 + 1 FREE*

*Free item of equal or lesser value.

NSK Create it

- Lightweight titanium body with Duragrip coating

- Also available in fittings for KaVo®, Dentsply Sirona®, W&H® (Z990/Z890 priced at RRP \$2,074, Z micro priced at RRP \$1,591)



MODEL **Z990L**
ORDER CODE **PA23730001**

- Optic
- **ULTIMATE Power** 30-44w**
- Std head: Ø 12.1 x 12.7 mm

RRP | \$1,981 **At 3 - 4.2 bar



MODEL **Z890L**
ORDER CODE **PA23720001**

- Optic
- Power 28-41w**
- Std head: Ø 10.6 x 10.8 mm

RRP | \$1,981



MODEL **Z micro (ultra-mini head)**
ORDER CODE **PA2357**

- Optic
- Power 20w
- Micro head: Ø 9 x 10.8 mm
- For Short Shankburs

RRP | \$1,381

S-Max M

3 + 1 FREE*

*Free item of equal or lesser value.



MODEL **M900L**
ORDER CODE **P1254**

- Optic
- Power 26w
- Std head: Ø 12.1 x 13.3 mm

RRP | \$1,381



MODEL **M800L**
ORDER CODE **P1253**

- Optic
- Power 23w
- Mini head: Ø 10.6 x 12.4mm

RRP | \$1,381



MODEL **Pico**
ORDER CODE **P1140**

- Optic
- Power 9w
- Ultra-mini head: Ø 8.6 x 9mm
- Used only with short shank burs

RRP | \$1,381

Call us for a quote on your required handpiece models today!



Luke Williams
0421 493 876
NSW/ACT/QLD



Lee O'Bryan
0427 758 650
Greater Sydney/QLD



Michelle De Blasis
0422 391 596
VIC/TAS/QLD

