



presidential
dental | medical | veterinary

EOFY SPECIALS

*Valid 1 May - 31 June 2024

Don't miss out on new
equipment deals @ tax time!



Luke Williams
0421 493 876
NSW/ACT/VIC



Lee O'Bryan
0427 758 650
Greater Sydney



Gezanne d'Assonville
0423 886 473
Queensland



Michelle De Blasis
0422 391 596
Victoria/Tasmania

www.presidential.com.au  1800 773 743

IMAGING

Easy is the *New* Smart!

x-mind prime 2

Showroom Stock Clearance

acteon  imaging suite

56 x 2D and 3D programs

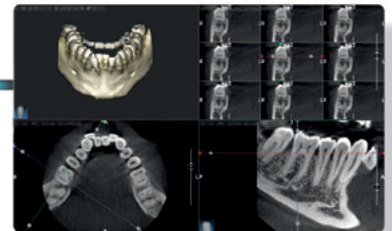
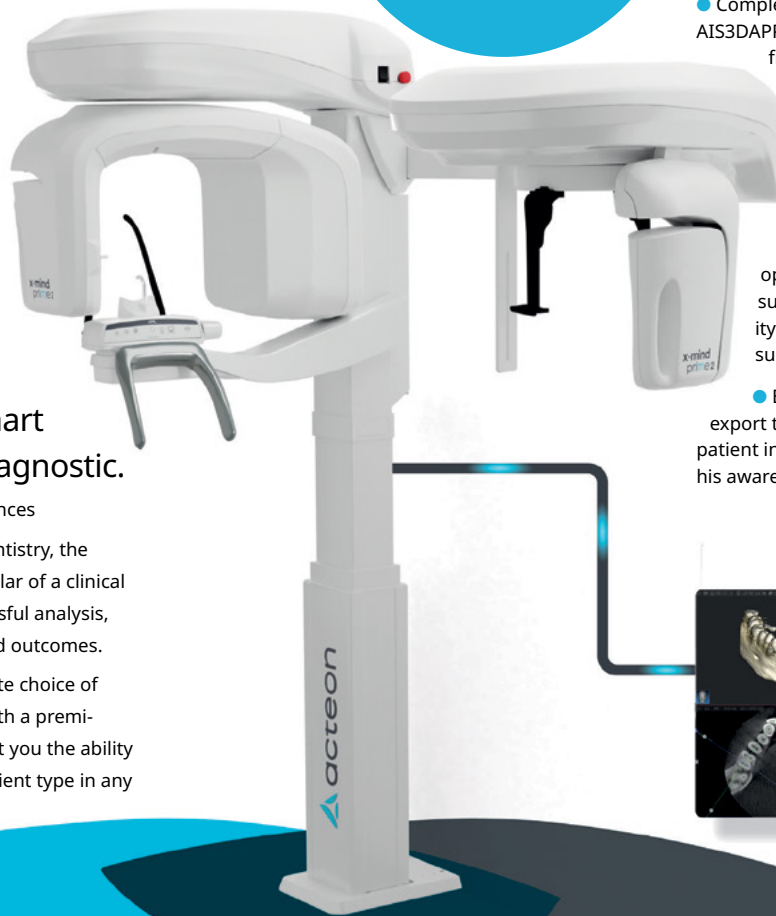
- Easy interface to use
- Complete 3D diagnostic tools, powered by AIS3DAPP, to fully exploit the clinical content from your cases
- The Implant Planning Wizard combined with a Cloud implant library allows you to easily and safely plan your surgery in just a few clicks
- The Surgical Guide Design option brings your planning to the surgical room with the highest fidelity possible with a custom designed surgical stent
- Effective patient engagement: export to portable viewer and involve the patient in the diagnostic process and raise his awareness to boost case acceptance

Strong hardware combined with smart software to fast diagnostic.

Elevate your clinical performances

Whatever your specialty in dentistry, the quality of the diagnosis is a pillar of a clinical workflow to guarantee successful analysis, treatment plan, procedure and outcomes.

On X-MIND® prime, a complete choice of exam modalities combined with a premium-class image quality will get you the ability to successfully handle any patient type in any clinical landscape.



Last detection technologies for high technical performance



High resolution image, up to 72,5µm of voxel size



Fast acquisition



SMAR-T option, the innovative Selective Metal Artifacts Reduction Tool

Meet the Prime Family

X-MIND® prime is available in four models, 2D wall mounted, 3D wall mounted, 2D ceph and 3D ceph, to suit any installation setup and clinical need.



X-MIND® prime 2D ceph
Cephalometric add-on for a full 2D system still encompassing the same philosophy of prime, ideal for pediatric applications.



X-MIND® prime 2D wall mounted
The ACTEON®'s smallest extra-oral 2D imaging solution ever for the maximum accessibility in any context.



X-MIND® prime 3D wall mounted
Cutting-edge CBCT technology enclosed in an essential and elegant style, fitting almost any space, even the narrowest ones.



X-MIND® prime 3D ceph
The most comprehensive all-in-one ACTEON® imaging solution, all you need to successfully handle any patient type in any clinical landscape... always at your fingertips.

SPECIAL INTRODUCTORY X-MIND V2 OFFERS

**Purchase
Receive**

**X-MIND Prime 2D V2 or Prime 2D V2 with Ceph
Bonus 2 Years Warranty (Total 4 Years) FREE**

**Purchase
Receive**

**Prime CBCT or Prime CBCT with Ceph V2
Bonus 2 Years Warranty (Total 4 Years) FREE**

**Plus you will receive a Free Online CBCT Licensing Course
Plus Get 5 Radiology Reports from O-Rad Free Package Value \$1,400.00**



**2 year
warranty
on unit**

HYBRID

PORTABLE X-RAY SYSTEM


Technical Specification

- Tube Voltage: 70 Kv
- Tube Current: 2 mA
- Focal Spot: 0.4 mm
- Time Range: 0.05 - 1 sec
- Total Filtration: Over 1.5 mmAl
- SSD: 200mm
- Weight: 1.9kg
- Dimension: 146 x 227 x 126 mm
- Power Source: 14.8V Rechargeable Battery



Buy 1 x Digimed Portable X-Ray System Receive Aluminum Carrying Case FREE

NEW A-DEC CHAIRS THAT WONT BREAK THE BUDGET!

A-dec 300 Pro 

UPGRADE YOUR OLD CHAIR FOR A NEW RELIABLE A-DEC CHAIR FROM LESS THAN \$30K!

A-dec are currently offering some amazing package deals on our **NEW A-dec 300 Pro**. Choosing your package is easy. Simply start by selecting from our pre-configured package options.

INTRO PACKAGE \$29,990

Includes

- 311B Pro Compatible Chair
- Formed Upholstery
- 332 Pro delivery with CP5 Touchpad
- 3-position Control Block
- 351/S/3 Assistant's instrumentation
- 372 LED Light



SIMPLIFIED PACKAGE \$38,750

INCLUDES

- 311B Pro Compatible Chair
- Formed Upholstery
- 332 Pro delivery with CP5i Touchpad
- 4-position Control Block with electric motor
- 551STA Assistant's instrumentation
- 372 LED Light

Call us for advice on:

- Removing and disposing old equipment
- Refreshing cabinetry and floors
- Intra-oral x-ray replacement
- Installation and compliance testing of new equipment
- Minimising equipment downtime and patient disruption
- Instant asset write-off benefits for items under \$20k exGST
- Ancillaries such as dental microscopes, nitrous sedation trolleys, surgical consoles
- Dental specialist finance introductions
- Dental build-fitout introductions

**BRING
ACROSS YOUR
EXISTING
SCALER,
AND EXISTING
STOOLS!**

New Surgery Setup Vatech Imaging deals!

1) Buy Green CBCT range, get FREE Intraoral X-ray package worth \$ 16,400



+




&




Green X 12/16/18™
EzSensor HD™
EzRay Air™ Wall



2) Buy A9 or Smart Plus, get FREE Intraoral X-ray package worth \$ 13,000




or



+



&



vatech A9™
Smart Plus™
EzSensor Classic™
EzRay Air™ Wall

Setting up a **New Practice?**

We've got you!

Get Full Digital Solution
with **vatech!**



vatech australasia

TRADE UP.

Want to Know
the **VALUE** of
your old OPG ?



vatech australasia

Contact Presidential for details: 1800 773 743



**Buy 1,
Get the 2nd item
50% off!!**

