



presidential

Consumables

Edition 1



a|dec
reliablecreativesolutions™



CATTANI
AIR TECHNOLOGY
AUSTRALASIA

acteon
Caring People. Improving Lives

NSK
Create it



vatech

AIR TECHNIQUES
equipped for life



presidential
dental | medical | veterinary

1800 PRESIDENTAL
(1800 773 743)

info@presidential.com.au

presidential.com.au

/PresidentialAustralia



a|dec
reliablecreativesolutions™



acteon
Caring People. Improving Lives

CATTANI
AIR TECHNOLOGY

NSK
Create it

vatech

AIR TECHNIQUES
equipped for life

MELAG
competence in hygiene

BIO HYGIENE

HELMUT ZEPP
MEDIZINTECHNIK GMBH

Miele

Contents

Page 3	Euronda Consumables
Page 6	Bio Hygiene
Page 9	Bio Hygiene / Acteon Riskontrol
Page 10	A-dec 2-minute DWL Digital Tester & Surface Swabs Kit
Page 11	Acteon Mirrors - Pure Reflect
Page 16	Zepf Instruments
Page 22	Cattani Consumables
Page 23	Metasys Suction & Statim Parts
Page 24	Durr Suction Cannula Range
Page 25	Durr Suction Wipes
Page 26	A-dec Chair Consumables
Page 27	A-dec Suction Consumables
Page 28	A-dec Chair/Stool Upholstery/Booster Seats
Page 29	A-dec Upholstery Colours
Page 30	Lisa Sterilisation Consumables
Page 31	Autoclave & Thermal Washer Disinfector Consumables
Page 32	W&H Handpiece Maintenance
Page 33	W&H Assistina Adaptor System
Page 34	NSK PANA Spray Plus Nozzles
Page 35	NSK Handpiece Oiler Adaptors
Page 36	W&H Surgical Implant Tubings
Page 37	W&H Piezomed Surgical Instruments
Page 38	W&H Piezomed Surgical Tip Kits
Page 39	Acteon Surgical Piezo Tips
Page 40	Acteon Surgical Tip Kits
Page 41	Relative Analgesia Clearview Scavenger Hoods
Page 42	NSK Scalars & Tips (Varios)
Page 43	NSK Scaler Tips (Varios)
Page 45	NSK Piezo Tips (VarioSurg)
Page 47	Acteon - Satelec Scalars & Tips
Page 50	Acteon - Satelec Scaler Modules & Tip Kits
Page 51	W&H Piezo Scaler Tips
Page 53	W&H Air Scaler Tips
Page 54	EMS Scalars, Handpieces & Tips
Page 56	Acteon AIR-N-GO Easy Prophylaxis

Euronda

a·dec
reliablecreative**solutions**

BIO
HYGIENE

CATTANI
AIR TECHNOLOGY
AUSTRALASIA

METASYS

STATIM
Cassette Sterilizers

W&H

GETINGE
GETINGE GROUP

acteon
Caring People, Improving Lives

EMS

HELMUT ZEPF
MEDIZINTECHNIK GMBH

NSK
Create it

Monoart® Towel Up

500 pieces
EU-218204XX



Euronda®

**20% OFF
WHILE
STOCKS
LAST**

Monoart® Plastic Cups

1 bag of 100 cups
EU-214100XX/100

Carton of 3000 cups
EU-214100XX



Colours



Monoart® Bandana



EU-2620XX

Colours



Packaging



Monoart® Aspirator Tips



OUT OF STOCK

EM19 Evo EU-2292000X

EM21 Evo EU-2292001X

Colours



Packaging

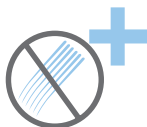
EM19 Evo
Connection diameter: 16 mm
Length: 114 mm

EM21 Evo
Connection diameter: 16 mm
Length: 129 mm





- 1** Basic treatment ANTI-SCRATCH protects against scratches and abrasions
*K Anti-scratch treatment.



- 3** ANTI-SCRATCH PLUS treatment
Constitutes a barrier against surface damage, it protects against scratches and abrasions. It is certified according to the requirement of EN166 "K".



- 2** Basic treatment ANTI-FOG that prevents the formation of condensation.
*N Anti-fog treatment.



- 4** ANTI-FOG PLUS treatment
It's a permanent treatment that prevents the formation of condensation. It is certified according to the requirement of EN166 "N".



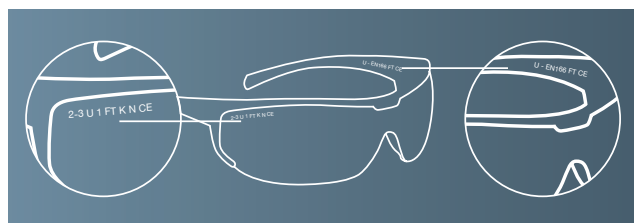
- 5** UDC Univet Double Coating
The revolutionary coating created through UDC technology provides to your eyewear superior resistance from scratches and fogging for outstanding performance in any working condition. Deposition of coatings in separate processes on the surfaces of the lens:
- exclusive anti-fog coating inside the lens
- multilayer scratch-resistant coating outside the lens. Both treatments are permanent and assure the product has high superior performance as per EN 166 standards. This technology is expressed in Monoart® Stretch Orange glasses.



- 6** SOFTPAD technology
SoftPad is a patented terminal that has been added to the arm of the eyewear to offer comfort and protection. Thanks to the innovative use of materials and a meticulous design, the ergonomics of these glasses reach a new level of comfort, providing perfect stability to the safety glasses and full adaptability to the face of the user. In addition to the length adjustment in 3 positions, the SoftPad system has a further tilting movement that allows the device to fit perfectly to the user's head. The SoftPad system is supplied with the Monoart® Cube glasses Monoart® Cube Orange/Smoked glasses and Monoart® Stretch glasses.

Eyewear marking

Added to personal protective equipments (PPE) the marking guarantees respect of current safety regulations. Required by the law, the marking is added both on the lens, to identify scale number, manufacturer, optical class, mechanical resistance and optional requirements, and on the frame to identify manufacturer, reference normative and mechanical resistance.



European Normatives

EN 166 Personal eye-protection - Specifications / EN 167 Personal eye-protection
- Optical test methods EN 170 Personal eye-protection - Ultraviolet filters.
Transmittance requirements and recommended use

Lens marking identification

2-3	U	1	FT	KN*	CE
Scale number (n.code+ shade)	Manufacturer	Optical class	Mechanical resistance	Optional requirement	

Frame marking identification

U	EN 166	FT	CE
Manufacturer	Standard	Mechanical resistance	

Euronda is the exclusive distributor of **UNIVET** products in the dental field.

Monoart® Protective Eyewear

Euronda®



Monoart® Spheric Glasses EU-261050



Monoart® Ultra Light Glasses EU-261002



NEW



Monoart® Evolution Glasses EU-261005



Monoart® Evolution Orange Glasses

EU-261102



NEW

Monoart® Cube Glasses EU-261010



NEW

Monoart® Cube Orange Glasses EU-261011



NEW

Monoart® Baby Orange Glasses EU-261090



NEW

Monoart® Stretch Glasses EU-261030





BIO HYGIENE

If a surface is not clean it's not Bio Hygiene

ASK US FOR A FREE TRIAL

Bevisto W1 - Acidic

Suction Cleaner

Acidic - 5ltrs = 50 treatments
No Phenols - No Aldehydes - No Gluderaldehydes
Non - Foaming
Biodegradable to OECD standards

TGA - Medical Device Included Class 1
CE - MADE IN GERMANY
REACH Compliant

A dual pH
system is
more effective
than a single
pH cleaning
system.



DOSAGE
5%



► Art. No BH002 - 5 litre jerry can



► Art. No BH001 - 1 litre dosage bottle

Bevisto W2 - Alkaline

Suction Cleaner

Alkaline - 5ltrs = 125 treatments
No Phenols - No Aldehydes - No Gluderaldehydes
Non - Foaming
Biodegradable to OECD standards

TGA - Medical Device Included Class 1
CE - MADE IN GERMANY
REACH Compliant

Ask us about
(CMS) Cleaning &
Maintenance System
- 2L jug to be used
with Bevisto
W1 & W2 to treat
suction lines



DOSAGE
2%



► Art. No 3116 - 5 litre jerry can



► Art. No 3110 - 1 litre dosage bottle



BIO HYGIENE

If a surface is not clean it's not Bio Hygiene

ASK US FOR A FREE TRIAL

BevistoCryl

Hospital Grade Disinfectant - Hard Surface

Readymade, No Alcohol, pH Neutral,
Biodegradable (OECD), No Phenols,
No Aldehydes, Safe on dental chair upholstery,
Bactericidal (incl MRSA) 60 secs,
Yeasticidal 60 sec, Vaccinia 60 sec, H1N1 60 sec,
COVID-19 3 min, ARTG 335345, Registered TGA.

Times of effect:

Vaccinia: 60sec

Bactericidal (incl MRSA): 60 secs

Yeasticidal: 60 sec



**TGA Regulation: You CANNOT
use a hospital grade disinfectant
on medical devices.**

TGA - Medical Device Included Class 1

CE - MADE IN GERMANY

REACH Compliant



► Art. No 2040 - 5 litre jerry can



► Art. No 2041 - 1 litre dosage bottle

BevistoCryl Dispenser

Foam Dispenser 200ml

Safer for DAs - foam prevents inhaling toxic aerosols

Foam saves money - very economical

Refillable - creates less waste



► Art. No BH018 - Foam Spray Dispenser



BIO HYGIENE

If a surface is not clean it's not Bio Hygiene

ASK US FOR A FREE TRIAL

Bio Hygiene Wipes

Bio Hygiene Wipes 250 (dry)

Size: 17cm x 26cm, 45gsm spun-lace, Lint Free

Much more effective than paper towels

Compatible with: Dental Chair Upholstery - Medical Devices

Certified Non Toxic - Refillable creates less waste

Designed to be used with BevistoCryl and BevistoCryl Foam Dispenser



► Art. No BH016 - 250 wipes plastic bucket

Bio Hygiene Wipe Refills

Made of non woven dry reel to be used with cleaning solutions.

Maximum absorption and release of solutions.

Special foil protection per reel of 250 wipes,

Size: 17 cm x 26 cm, 45 gsm spunlace.

Refills : 4 reels per carton.



► Art. No BH017 - 250 wipes reels x 4

Bevisto-Instrumental

Ultrasonic Solution/Soaking Trays - Bevisto-Instrumental

No Phenols - No Aldehydes - No Gluderaldehydes
Non Corrosive / Biodegradable to OECD standards
Surgical instruments, rotary precision instruments, rubber polishers
Compatible with endoscopes



► Art. No 2042 - 5 litre jerry can



► Art. No 2032 - 1 litre dosage bottle

BevistoSurface

This product is pH neutral. No aldehydes – No phenols

Cleaning concentrate pH 7.5 for wiping and mopping surfaces.
5 Litres at 1% convert to 500 Litres ready for use solution.
Suitable for soaking objects and for areas with a high dirt load.
Contains didecyldimethylammoniumchloride Non-ionic tensides, synergistic additives, auxiliary agents, Complexing agents and scents.

TGA - Medical Device Included Class 1

CE - MADE IN GERMANY

REACH Compliant



BIO HYGIENE

If a surface is not clean it's not Bio Hygiene



► Art. No 2031 - 5 litre jerry can



► Art. No 2030 - 1 litre dosage bottle

Art by RisKontrol®

The system that improves and guarantees infection control and can be used on a wide range of triplex syringe tips.

- Non-sterile disposable tips for air/water syringes
- Available in 5 colours / 5 aromas
- Box of 250 tips



SA-201703 Aniseed



SA-201700 Mint



SA-201702 Liquorice



SA-201701 Mandarin



SA-201704 Blackcurrant



Adaptors

Adaptors are available for most dental units on the market including:

- W&H
- Kavo
- DCI
- Planmeca
- Sirona
- Belmont



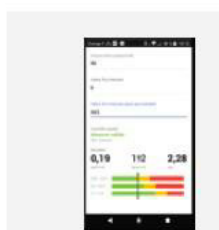
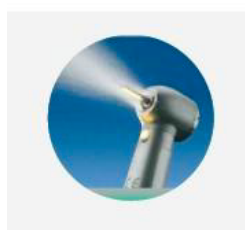
A-dec 2-minute DWL Digital Tester & Surface Swabs Kit

A-dec now has a new chairside solution for quantification of total flora in DENTAL UNIT WATERLINES that is rapid, reliable, easy to use and economical to help improve health risk management.

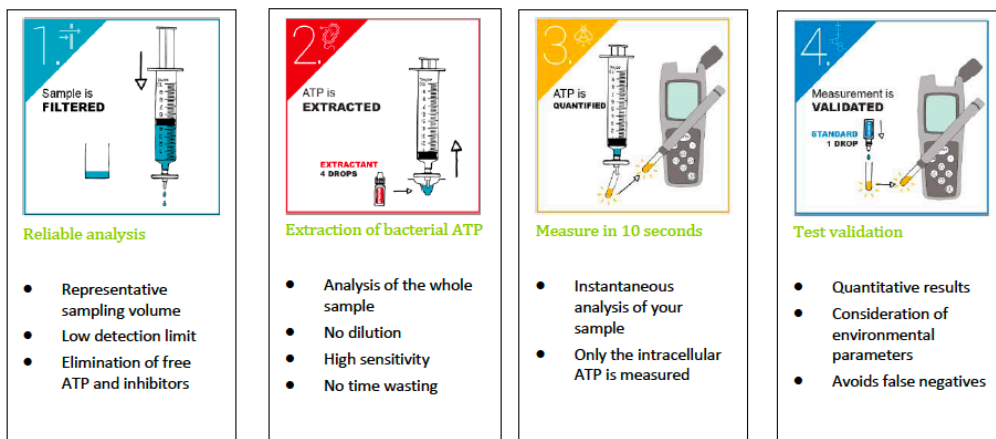
Contamination or degradation of water's microbiological quality is caused by one or all of the following:

- Untreated water supplies
- Low quality network materials
- Compromised operating procedures.

There is no definitive solution to eradicate microbiological issues. Only an approach starting with the observation of the network state, followed by the monitoring of the corrective action effects can result in effective management of microbiological risks.



HOW DOES IT WORK? 2-MINUTE ANALYSIS



LumiTester Smart	XD-61234
LuciPac A3 Surface (20 x 5 packs)	XD-60361
2 Min Unit-Oral Complete Kit	XD-2M420
2 Min Cario-Analyse Test Kit	XD-2MCario
2 Min Perio-Analyse Test Kit	XD-2MPerio

PUREREFLECT
— SEE THE TRUE IMAGE

I AM
YOUR THIRD EYE

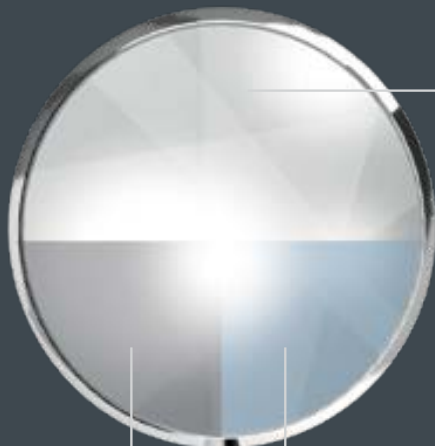
ACTEON

PURE REFLECT
— SEE THE TRUE IMAGE

PURE REFLECT®

TECHNOLOGY

an exclusivity of ACTEON PRODONT-HOLLIGER



RHODIUM
a greyish reflection

TITANIUM
a blueish reflection

Inspired by the aerospace industry

No double image (front surface)

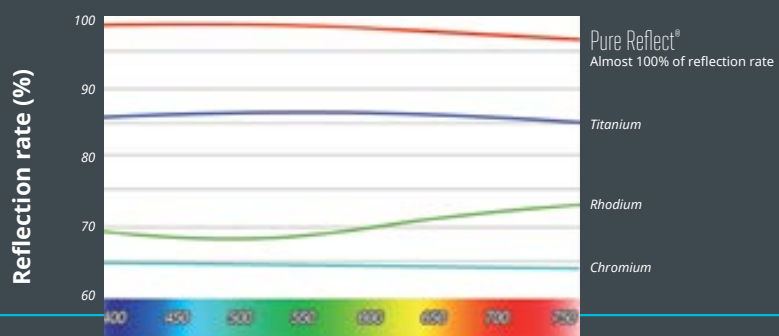


Very luminous



No color and shape distortion
Accurate and sharp image

The authentic color reflection



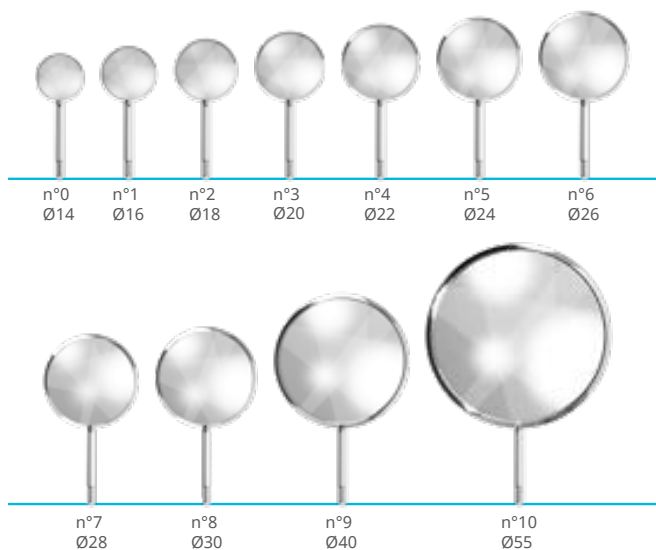
Visible wavelengths (nm)

*source: CNRS laboratory - France 12/2013

MOUTH MIRRORS

**From diagnostic to treatment,
the benefit to all dental clinical acts**

Visual examination is the first step to diagnostics
Deserve the true color reflection for an
optimal performance



PURE REFLECT®



Competitor



MICROSCOPIC MIRRORS

The microscopic perfectly visible

- Make the access to the apex easier
- Appreciate the accurate vision of the pulp chamber
- Save space in the oral cavity: handle instruments and micro mirrors comfortably



Visibilité optimale
de l'isthme





Prof. H. Tassery, Marseilles

"In my everyday clinical practice, the Pure Reflect® mirror remains a valuable tool permitting the perfect vision of the shades and details of dental structures. It permits working without any fatigue, with or without visual aids such as magnifying glasses and microscopes. The Pure Reflect® mirror has become essential and has made traditional mirrors lapsed."

PHOTOGRAPHIC MIRRORS



Prof. J.F. Lasserre, Bordeaux

"The exceptional luminosity and the colored fidelity define the Pure Reflect® mirrors as indispensable tools to a qualitative intrabuccal photograph"

Effective communication with patients

Make the difference with the Pure Reflect® technology



PURE REFLECT®



Titanium

- Highlight the dental treatment and restoration to promote your practice
- Take pictures of clinical cases for books, publications and patient records



Occlusal



Vestibular



Lingual



All our mirrors are double sided
Made out of glass
8 sizes available



Handle

Hold the photo mirror and retract the cheek at the same time

FRONT SURFACE

Cross-sectional view

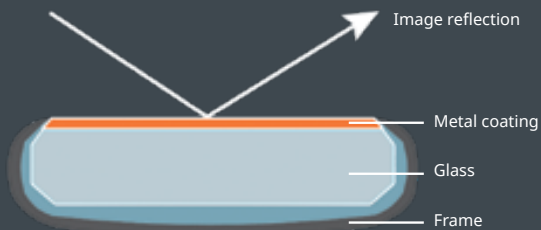
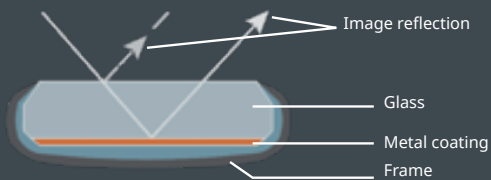


Image reflected directly
on the surface of the glass,
distortion-free
NO DOUBLE IMAGE

BACK SURFACE

Cross-sectional view of
an aluminium mirror



Reflecting surface
under the glass
DOUBLE IMAGE



The finitions of the frame also matters

Flat and ergonomic soldering

More comfortable
for the patient while
retracting the cheek



ACTEON PRODONT-HOLLIGER



Competitors

Satined finition

Prevent light reflection
in the eyes
Avoid eye fatigue



Optimal crimping

The frame suits the
mirror
No sharp edges
No blood and dirt
retention



ACTEON PRODONT-HOLLIGER



Competitors

For Diagnostic

Total Diagnostic Package

6 x Tweezers, London College
Code 22.011.03



12 x BIONIK Single Handle w/ Reducer
Code 26.194.08



6 x Sickle Probe, Interchangeable
Code 24.099.23



4 x Williams Perio Probe Interchangeable
Code 24.454.05



12 x Mouth Mirrors, Interchangeable
Code ZE2406122



For Periodontology

Total Periodontology Package

Zepf BIONIK Gracey Curettes are Colour Coded for all Quadrants - see right for details

Incisors/Canines



Premolars/Molars



3 x BIONIK Curette, Gracey 5/6
Code 24.203.05G



3 x BIONIK Curette, Gracey 7/8
Code 24.205.07G



3 x BIONIK Curette, Gracey 11/12
Code 24.204.11G



3 x BIONIK Curette, Gracey 13/14
Code 24.207.13G



3 x BIONIK Scaler, H6/H7
Code 24.208.06H



3 x BIONIK Scaler, 204S
Code 24.208.04S



For Conservation

Total Conservation Package

1 x Spatula #1 1.5mm small
Code 26.120.10Ti



1 x Spatula #2 2.8mm large
Code 26.120.11Ti



1 x Spatula #1 2.2mm, Burnisher 1.5mm
Code 26.120.20Ti



1 x Spatula #2 2.4mm, Burnisher 1.9mm
Code 26.120.21Ti



1 x Condenser 1.6mm small, 2.5mm large
Code 26.120.30Ti



1 x Plugger 1.8mm small, 2.2mm large
Code 26.120.31Ti



For Conservation

Total Conservation Package

**1 x Plugger 1.7mm small,
1.7mm small**

Code 26.120.40Ti



**1 x Spatula Combination
1.7mm**

Code 26.120.50Ti



**1 x Cement Spatula
4.5mm small**

Code 26.130.01



**2 x Excavators 127/128
2.0mm**

Code 24.708.27



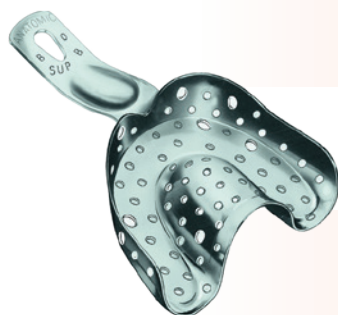
**2 x Excavators 19
2.0mm**

Code 24.733.19



**2 x Carving Instrument Hollenback
#3 small**

Code 28.130.00



**1 x Imp. Tray Upper B0
W55mm x L39mm**

Code 28.601.00

**1 x Imp. Tray Upper B1
W65mm x L52mm**

Code 28.601.01

**1 x Imp. Tray Upper B2
W71mm x L60mm**

Code 28.601.02

**1 x Imp. Tray Upper B3
W73mm x L63mm**

Code 28.601.03

**1 x Imp. Tray Upper B4
W80mm x L73mm**

Code 28.601.04



**1 x Imp. Tray Lower B0
W61mm x L44mm**

Code 28.606.00

**1 x Imp. Tray Lower B1
W72mm x L51mm**

Code 28.606.01

**1 x Imp. Tray Lower B2
W78mm x L54mm**

Code 28.606.02

**1 x Imp. Tray Lower B3
W82mm x L58mm**

Code 28.606.03

**1 x Imp. Tray Lower B4
W838mm x L65mm**

Code 28.606.04

1 x Impression Modelling Knife

Code 28.130.00



2 x Tofflemire Matrix Retainer

Code 19.060.00



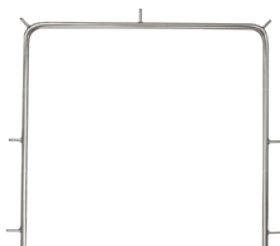
2 x Articulating Paper Forceps

Code 22.101.15



1 x Rubber Dam Frame 10cm x 9.5cm

Code 19.125.00



1 x Rubber Dam Forceps Ivory

Code 19.037.01



1 x Rubber Dam Punch Ainsworth

Code 19.010.00



For Extraction

Total Extraction Package

1 x Forceps, Xcision, Eng Ash 2*
Upper Incisors & Eye Teeth
Code 12.002.00Z



1 x Forceps, Xcision, Eng Ash 33A
Lower Incisors, Canines & Roots
Code 12.033.01Z



1 x Forceps, Xcision, Eng Ash 35*
Upper Premolars Special Beaks
Code 12.035.00Z



1 x Forceps, Xcision, Eng Ash 13*
Lower Premolars
Code 12.013.00Z



1 x Forceps, Xcision, Eng Ash 17*
Upper Right Molars
Code 12.017.00Z



1 x Forceps, Xcision, Eng Ash 18*
Upper Left Molars
Code 12.018.00Z



1 x Forceps, Xcision, Eng Ash 73*
Lower Molars Better Access
Code 12.073.01Z



1 x Forceps, Xcision, Eng Ash 51A*
Upper Jaw Roots
Code 12.051.15Z



1 x Forceps, Xcision, Eng Ash 45Z*
Lower Jaw Roots
Code 12.045.15



Prefer different
Forcep types?
Various Forcep
types available.
Call us for options
1800 773 743

1 x X Tool, Straight 2.5mm Upper
Code 17.007.01



1 x X Tool, Straight 4.5mm Upper
Code 17.007.02



1 x X Tool, Curved 2.5mm Lower
Code 17.007.03



1 x X Tool Curved 4.5mm Lower
Code 17.007.04



**1 x X Desmo Tool, Spade 4.0mm
Fibres**
Code 17.007.05



**1 x Lucas Scraper, 2.5m Double
Ended**
Code 41.855.01Z



1 x Periotome Combo P2/P3
Code 26.182.23



1 x Periotome Combo P4/Spoon 3.0mm
Code 26.182.24



For Extraction

Total Extraction Package

1 x Root Elevator, Straight 2.0mm

Code 17.001.10



1 x Root Elevator, Straight 3.0mm

Code 17.001.11



1 x Root Elevator, Straight 4.0mm

Code 17.001.12



1 x Root Elevator, Straight 5.0mm

Code 17.001.13



1 x Heidbrink Root Sprint Elevator 2.0mm

Code 17.055.02



1 x Heidbrink Root Sprint Elevator 2.5mm

Code 17.055.03



For Surgical

Total Surgical Package

2 x Surgical Scissors Iris Curved 11.5cm

Code 46.051.11



2 x Surgical Scissors Iris Straight 11.5cm

Code 46.050.11



1 x Needle Holder Straight 17.5mm TC

Code 41.252.15TC



1 x Haemostatic Forceps Kelly 14cm

Code 23.098.14



1 x Scalpel Holder Round for 10-15 Blades

Code 46.007.00



1 x Scalpel Blades # 15. Packed 100

Code 46.014.15



COMBINED INSTRUMENT SETS:

- Diagnostic
- Periodontology
- Conservation
- Extraction
- Surgical

as listed on pages 16-19

For Conservation

Total Conservation Package

Addition of the CompoSMOOTH Brush & Application Insert Set

The CompSMOOTH, a special silicon brush, allows an easy adaption and modelling of the composite surface before polymerisation. Even 'sticky' composite can be adapted in an optimal way. The perfect surface morphology is created by only slight pressure.

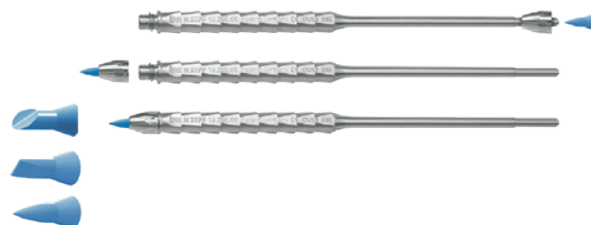
Set includes:

Code 19.200.00 CompoSMOOTH Brush Holder

Code 19.201.11 SoftApplication Insert – tapered – Set 12

Code 19.201.21 SoftApplication Insert – flat – Set 12

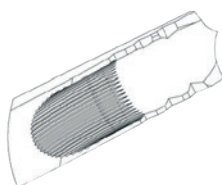
Code 19.201.31 SoftApplication Inser – pointed – Set 12



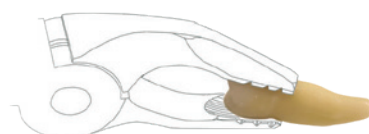
For Extraction

Upgrade of Extration Forceps to RoBa edition

With the patented design, RoBa is the advancement of conventional extracting forceps with the advantages of a tapered deep grip. The modified beaks fit exactly on the teeth which ensures a maximum grip on the appliance. The new beaks are available for all figures in the upper and lower jaw.



The billow grind claws radially into the teeth and avoids a 'riding' between the tooth crown and the inner contour of the beak.



Concavely elaborated inner contours of the forceps beak fit in the convex tooth contour. With deep grip in the alveolus on the neck of the tooth or crown, RoBa ensures a parallel and maximum grip.



*This upgrade changes those Xcision Forceps marked * to RoBa type*

For Extraction

Addition of the Benex II Extraction System

In modern dentistry, Implantology following extraction is favoured.

Benex II provides gentle & simple extraction of roots over the whole mouth.

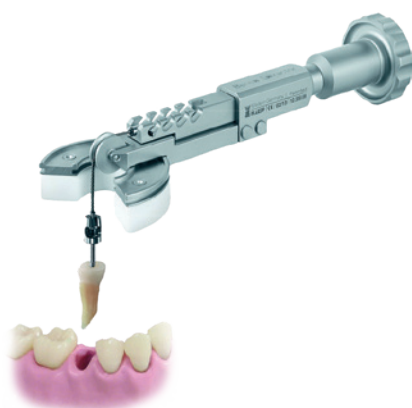
Damage to soft tissue and the surrounding bone is minimised.

Due to the longitudinal extraction method, Benex II provides the optimal base for directimplantation. It is also a valuable aid for retarded implantation after extraction

Set includes:

Code 12.303.00 Benex II Set – Basic type

Benex II



12.302.00

Addition of the BIONIK Mirror Retractor

The The Revolutionary BIONIK Mirror and Mouth Retractor provides ease of retraction and viewing access never before possible.

Code 24.062.30 24mm Retractor/Mirror Width
OR

Code 24.062.31 27mm Retractor/Mirror Width



Addition of Wisdom Teeth Extraction Forcep Set Kit Upgrade Price

Xcision Forceps Ash 67 for Upper Wisdom Teeth

Code 12.067.95Z



Xcision Forceps Ask 79 for Lower Wisdom Teeth

Code 12.079.95Z



Addition of the Universal Forceps

No surgery should be without the Zepf Universal Forceps.

Able to be used for securely grasping provisional plastic items, bridges, nerve instruments, impacted matrices, attaching inlays, setting interdental wedges etc. The Tungsten Carbide jaws provide secure grip.

Code 19.281.15TC



Addition of Contrast PA Probe Inserts

Zepf Contrast PA Probes are made of flexible plastic to adapt optimally to the anatomy of the pocket depth.

Sterilisable, the tips are reusable until they bend or the graduation colour fades.

For use with the Zepf BIONIK handles included with instrument set.

Different graduation versions available.



Addition of Crown Spreading Pliers

The Helmut Zepf Crowning Spreading Pliers are designed for spreading Crowns without pressure on the root or neighbouring tooth.

Sturdy, and a spring handle to hold the instrument securely in place.

Code 19.277.01Z



Addition of the Universal Finishing Clamp Set

These innovative holding instruments for finishing strips of all types. The instrument is designed for ergonomic functionality to contribute for the significant easing of work involving finishing strips and other applications.

Code 23-120-12





1 ONE DISINFECTANT ONE DILUTION ONCE A DAY



3. Lubri-Jet Silicone Lubricant Drops 30ml (4 Pack)

Ideal for lubricating o-rings and seals.

Product Code: M040727

4. Antifoaming Disinfectant Tablets (50 Tablets)

Reduces foam that occurs through dental treatments and continuously disinfects throughout the working day.

Product Code: M040825

1. Puli-Jet GENTLE 2.0 Non-Foaming Disinfectant with Anti-Scale for Dental Suction Systems

- Disinfects and cleans
- Safe and easy to use – one solution for daily disinfection
- NO alternating schedules or calendar tracking
- Phenol and Aldehyde FREE
- 100% Compatible with Cattani suction systems

Product Code: M060980

2. Pulse Cleaner

Automatically aspirates Puli-Jet Gentle 2.0 Disinfectant and creates the necessary agitation and turbulence for effective cleaning and distribution of disinfectant throughout the suction system and suction lines.

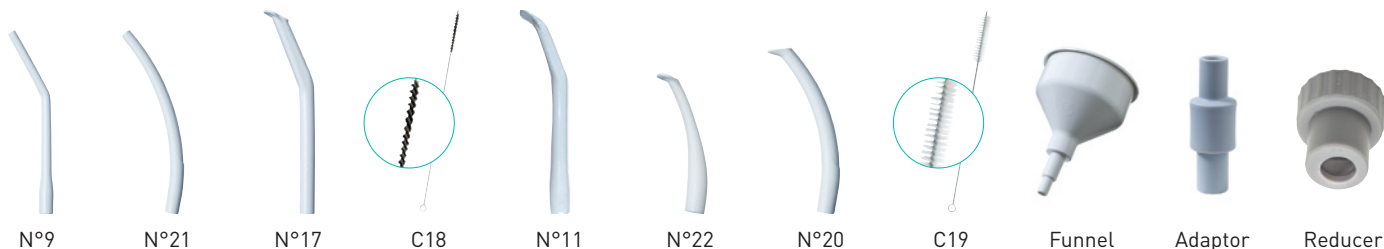
Product Code: C040720

Pulse Cleaner Replacement Plunger

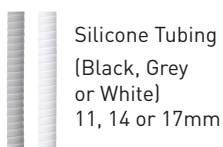
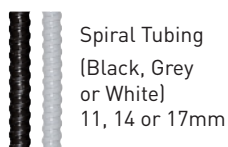
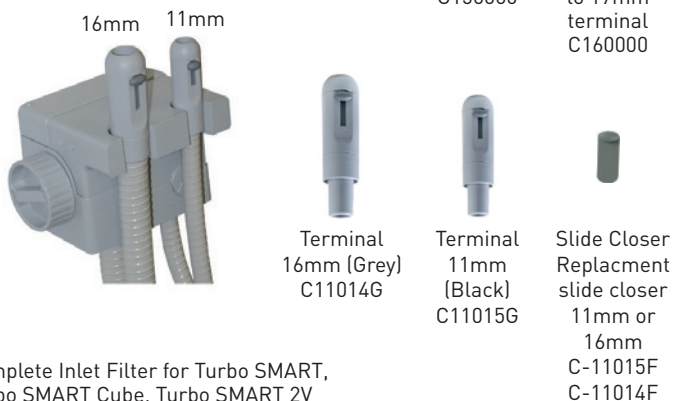
Product Code: C040398

Pulse Cleaner Reducer Adaptors

Product Code: C201846



N°9	Surgical Tip – Suits 11mm Hose Terminal
N°21	Surgical Tip – Suits 11mm Hose Terminal • Precise
N°17	HVE Tip – Suits 11mm Hose Terminal • Quiet – Reduces sound
C18	Cleaning Brush (Small)
N°11	HVE TIP – Suits 16mm Hose
N°22	HVE TIP – Suits 16mm Hose Terminal • Quiet – Reduces sound
N°20	HVE TIP – Suits 16mm Hose Terminal
C19	Cleaning Brush (Large)



Complete Inlet Filter for Turbo SMART, Turbo SMART Cube, Turbo SMART 2V and Turbo SMART HP
C201544

Metasys Suction Consumables



Green and Clean CL - STARTER KIT:

MS-60010301
contains:
-1 x 500ml Bottle (for 100 dosed applications)
-1 x Compact Dispenser unit



Green and Clean CL - REFILL SET A:

MS-60010302
contains:
-2 x 500ml Bottles (for 200 dosed applications)



Green and Clean CL - REFILL SET B:

MS-60010303
contains:
-1 x 500ml Bottles (for 100 dosed applications)



Green and Clean CK Refill Cannister:

MS-60030122

METASYS

**Suction Line
Cleaning &
Disinfection
from just \$1.30
per day!**



Statim Parts



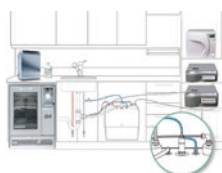
Cassette Seal:

Statim 2000: 01-100028S
Statim 5000: 01-101649S



Thermal Printer Paper:

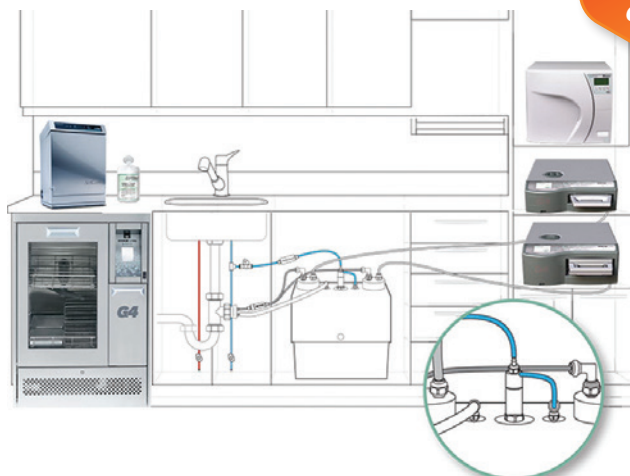
01-101657A



Vista Cool, auto-drainage system:

9A586001 Vista Cool Single System
9A586002 Vista Cool Double System

**No need to
drain
bottles
daily!**



STATIM
Cassette Sterilizers



**Ask us about further
Statim parts and pricing**

The Aerosol Cannula from Dürr Dental up to 100% aerosol suction volume*

Rotatable protective shield

Particularly effective –
up to 2x more aerosol uptake



Comfortable design

Easy-grip surface for
practical working



Ergonomic shape

Perfect shape
for low-fatigue work



Safe protection against infection

Reduces germ-laden aerosol directly
in the mouth of the patient – with up
to 100% reduction possible!

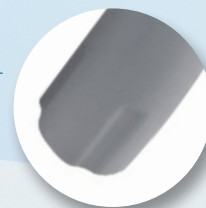
Autoclavable plastic

Durable, robust and autoclavable
up to 134°C



Protect auxiliary air inlets

The best possible protection against
reflux from the suction system



**Durr range
of cannulas
starting from
\$27 each!**

*According to in-house tests based on a suction volume of 300 l/min.

The Aerosol Cannula reduces aerosol directly where it is produced: in the mouth of the patient. The features of this globally unique prophylaxis cannula make it a real aerosol cannula – with the large, rotatable protective shield enabling particularly high spray mist suction of up to 100%*! It also enables particularly ergonomic suction – even without a dental assistant. **For more information please visit www.duerrdental.com**

**DÜRR
DENTAL**
THE BEST, BY DESIGN



The Durr Hygiene - FD-366 range has been tested against a wide array of viruses including:

- | | | | |
|-----------------------------------|--------------|----------------------|---------------------|
| ✓ Coronavirus (SARS-CoV-2) | ✓ | Vacciniavirus | ✓ Adenovirus |
| ✓ Murine Norovirus | | | |
| ✓ Poliovirus | ✓ HBV | ✓ HCV | ✓ HIV |

Maximize Aerosol Capture with the Durr Suction Cannula range

Durr Aerosol Cannula

Rotatable protective shield

Particularly effective – up to 2x more aerosol uptake

Safe protection against infection

Reduces germ-laden aerosol directly in the mouth of the patient – with up to 100% reduction possible!



DUR-CDF366-A0-155

A-dec Chair Consumables



Standard Syringe Tip

23-0872-01 (pack of 5)
23-0872-02 (pack of 25)



Syringe Tip Retainer Non-locking Kit

23-1112-00



A-dec Triplex Handpiece

Traditional 23-1011-00
Continental 23-1096-00



A-dec Triplex Syringe Orings

Small pkt 10 - 034-003-01
Large pkt 10 - 035-062-01



A-dec ICX Waterline Treatment Tablets

0.7 Litre - 90-1064-01
2.0 Litre - 90-1065-01



ICX Renew (Shock Treatment)

90-1691-02 ICX Renew, 1 Application
90-1691-01/K ICX Renew 1 Box, 9 Applications



A-dec Replacement Water Bottles

0.7 Litre - 14-0416-00
2.0L for A-dec 300 & 500, white - 90-1768-01
2.0L for A-dec 300 & 500, surf - 90-1768-00
2.0L for A-dec 200, white - 14-0486-00



A-dec Adjustment Keys

500 Chair (pkt 4) - 38-1808-01
300 Chair individual - 38-1823-00
1040 Chair Individual - 98-0867-00
Performer individual - 027-057-00



Silicone Lubricant - Tube

Pkt 6 - 98-0090-01 (Satchels)
1 x tube - 120g - RY421515



Stainless Steel Trays

Standard 241 x 343mm - 043-001-00
Large 295 x 432mm - 043-006-00



Washable Tray Pads

39-0790-02 (pkt 5)



A-dec Overhead Light Globe

6300 Globe 95W, 17V - 041-709-00
Performer Globe - 041-513-00



A-dec Overhead Light Shield

LED Light Shield - 90-1343-00
Performer - 28-1166-00
A-dec 200 - 28-1991-00
A-dec 300 - 28-2031-00
A-dec 500/6300 - 28-0503-01



A-dec 2-minute DWL Digital Tester and Surface Swabs Kit

A-dec's chairside solution for instant dental unit water and surface swab test result. It is rapid, reliable, easy to use and economical to help improve health risk management.

Product code: XD-61234



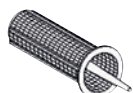
A-dec HVE Suction Parts

HVE Assembly (complete)
 HVE Barrel Assembly only
 Barrel O-rings (pkt 10)
 Spring Clip (pkt 5)
 Tailpiece Connector
 Base O-ring (pkt 10)
 Smooth HVE 11mm Hosing (7ft)
 "EasyFlex" 15mm tube w/ 15mm tailpieces (63") grey
 "EasyFlex" 15mm tube w/ 15mm tailpieces (52") grey

A-dec Saliva Ejector Suction Parts

Saliva Ejector Assembly (complete)
 Barrel Assembly
 Tip O-rings (pkt 10)
 Optional Screen (pkt 10)
 Tailpiece (Aluminium)
 Smooth SE Hosing (7ft)
 10mm tube w/ 10mm tailpieces (63") grey
 10mm tube w/ 10mm tailpieces (52") grey

A-dec Suction Consumables



Screen Solid Trap

11-1191-01 - Pkt 10



Screen Ellipse Solid Trap

11-1284-01 - Pkt 10



Cuspidor Bowl Screen

Pkt 5 Surf colour - 75-0035-01
 Pkt 5 White colour - 75-0035-03



Triple Vacuum Connector

A-dec 500 Surf - 77-0453-00
 A-dec 500 White - 77-0453-01
 O-ring only - 030-035-02
 Small O-rings - 90-1357-00



Vacuum Tower Cap

A-dec 500 Surf - 77-0254-01
 A-dec 500 White - 77-0254-03
 O-ring only - 030-035-02

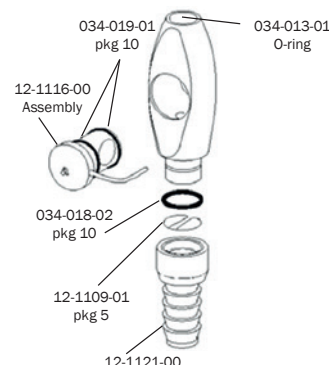


Vacuum Brushes

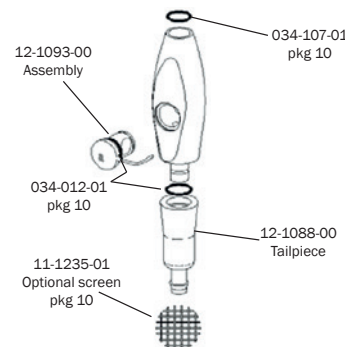
1/2 inch - Pkt 6 049-001-01
 3/4 inch - Pkt 6 049-004-01



Autoclavable HVE Assembly with Large Bore 15mm 12-1257-00



Saliva Ejector Assembly without Tubing 12-1258-00



Ask us about dual pH suction line cleaner for best results in infection control

Check out our online shopping for consumables at presidental.com.au

Access previous orders and save yourself time on routine orders placed.

Chair Upholstery Sets

200 Seamless	62-0699-00
200 Sewn	61-3810-00
300 Seamless (Version A)	62-0396-00
300 Sewn (Version A)	62-0677-00
300 Seamless (Version B)	62-0947-00
300 Sewn (Version B)	62-0956-00
400 Seamless with Knob headrest	62-0790-00
400 Seamless with Lever headrest	62-0874-00
400 Sewn with Knob headrest	62-0787-00
400 Sewn with Lever headrest	62-0872-00
500 Seamless	62-0165-00
500 Sewn	62-0171-00
NEW 500B Seamless	62-0998-XX
NEW 500B Sewn	62-1000-XX
1040 Seamless	61-2018-00
1040 Sewn	61-2600-00
Performer Seamless	61-2751-00
1011/1021 Seamless	61-1671-00

Toe Board Covers

200 Seamless	61-1679-00
300 Seamless Ver. A	62-0676-00
300 Seamless Ver. B	62-0848-00
300 Sewn Ver. A	62-0685-00
300 Sewn Ver. B	62-0963-00
400 Seamless	62-0848-00
400 Sewn	62-0847-00
500 Seamless	62-0156-00
500 Sewn	62-0184-00
1040 Seamless	61-1679-00
1040 Sewn	61-2619-00
Performer Seamless	61-2619-00
1011/1021 Seamless	61-1679-00
1010/1015 Thick	61-1593-00
1010/1020 Tubular	61-1632-00

Stool Casters

Surf (pkg 5)	65-1625-03
Grey (pkg 5)	65-1625-04



421/1601
Doctor Stool



422/1622
Assistant Stool



521
Doctor Stool



522
Assistant Stool

Stool Upholstery Sets

421/1601 Doctor Stool	65-0212-00
422/1622 Assistant Stool	65-0235-00
521/522 Stool Upholstery (fits both)	65-1883-00

*Note that upholstery listed above is for complete sets. Individual pieces are also available, please phone for a quote.



Crescent Booster Seat for Child

Booster Seat Only - Blue	CR.DP81
Booster Seat Only - Pattern	CR.DP87
Booster Seat Only - Grey	CR.DP82
Booster Seat & Pillow Set - Blue	CR.DP81/51
Booster Seat & Pillow Set - Pattern	CR.DP87/55
Booster Seat & Pillow Set - Grey	CR.DP82/52



A-dec 200



A-dec 300



A-dec 400



A-dec 500



A-dec Performer



A-dec 1040



A-dec 1011/1021



Sewn Colors



Ultraleather®

* Ultraleather Pro features Ultrafabric's Ink & Stain Resistant solution which repels stubborn stains, while inherent EPA-registered antimicrobial technology inhibits the growth of bacteria and other surface pathogens. ** Color inspired by Pantone's Color of the Year 2023, Viva Magenta — 18-1750 and used with the permission of Pantone LLC — Exclusive for A-dec in the dental market.

Give your chair a face-lift with some new upholstery!

Formed Colors



Dauphine

30% off
selected
upholstery
colours*

*while stocks last

* Final Stock available only

** Additional colours available with special orders

A-dec Upholstery Colours

Create the right treatment room environment with designer colours to match your style. Soft, luxurious sewn upholstery and smart, sleek seamless upholstery. Choose a palette to convey your unique vision.

Want to experiment with your favorites? Go to presidential.com.au/inspireme and mix and match cabinet, countertop, floor, and wall colours to make your investment your very own.



W&H LISA 500 Series Autoclave, LISA Fully Auto & LISA VA



Bacteriological Filter

W322400X



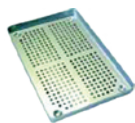
Dust Filter

F364502X



Door Seal (Grey)

F460504X



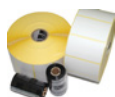
Aluminium Trays

(17L) F523204X
(22L) F523205X
*pricing is per tray



MMC Card for Logger

A801018X



Lisasafe Consumable Kit

A8105000

W&H LISA VA-B & LARA Autoclave



Bacteriological Filter

W322400X



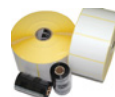
Dust Filter

F364511X



Door Seal (Grey)

F460504X



400-800 cycle consumable kit

X050328X



Meditrax Manual Tracking System



Surgery Patient Record Sheets (10)

SBMPR/201



Surgery Logbook

SSM00/6



Suretrax Process Indicator Batch Labels - Blue (700 Labels per roll, 5 rolls per box)

6034332421



Suretrax Process Indicator Batch Labels - Red (700 Labels per roll, 5 rolls per box)

6034332423

W&H Lisa MB Autoclave



Bacteriological Filter

W322400X



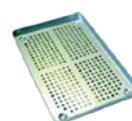
Printer Accessories

Printer Ribbon ERC-09
Printer Paper
A700140X



Door Seal (Black)

F460503X



Aluminium Trays

(17L) F523204X
(22L) F523205X
*pricing is per tray



Lisa Log64

Change printer to data logger 1972111X

Sterilisation Consumables (Ultrasonic/Autoclave/TWD)

Autoclave Test Kits

Helix Test Packs



W&H Helix
8002051
(pkt 250)

Class 6 Strips



Titens Class 6 Emulators
AUS-508 (pkt 250)
Meditrax Class 6 Emulators
SBM-002 (pkt 400)

Bowie & Dick Tests



Green Card Bowie & Dick Test Indicators
PL254
(packets x 15 tests)

Demineralisation Cartridges



W&H Multidem C27 Resin Cartridge
A812016X

Incubators & Incubator Accessories



EZtest® 13 Well Indicator
I-1410



EZTest® Self Contained Biological Indicators for Steam Sterilisation
EZS5/25 (Pkt 25)



Smart-Well Incubator Kit
SWI-202
Includes: 1x Dual Temp 10 Well Incubator;
1x Record Printer; 1x Record Book

Ultrasonic Bath - Test Kits



Wash Monitor - Ultrasonic Bath



Wash Monitor Holder

Thermal Washer Disinfector - Test Kits



Wash Monitor - TWD



Protein Test - Instrument Surface



Protein Test - Instrument Lumen



Getinge Assured Test Soil

ECO LAB Consumables for Miele Thermal Washer Disinfectors



Asepti Neutraliser 5lt Liquid
5602801



Asepti MultiZyme 5lt Liquid
5603101



Asepti Rinse Clear 5lt Liquid
5603401

**Ask us about
Performance
Qualification &
annual servicing
of Thermal Washer
Disinfectors!
(TWDs)**



Miele TWD Injection Rail Accessories

Connectivity



XKM RS232 10 Med – 1044402
Serial module

Miele TWD Injection Rail Accessories

Filter & Brush – to suit Miele PG8581



A800 Central filter – 9960680
Filter made from multiply stainless steel mesh for A105/1 upper basket. Mesh size 63 microns. Can be cleaned with A804 cleaning brush. Length - 405mm; Diameter - 22.5mm



A804 Cleaning Brush – 9960720
Twisted brush with spiral bristles for A800 central filter cleaning. Handle with grommet. Length - 500 mm; Brush Length - 100 mm

Ask us about
Performance
Qualification &
annual servicing
of Thermal Washer
Disinfectors!
(TWDs)



Miele TWD Injection Rail Accessories

Adaptors



A801 Adaptor – 9862940
For use of AUF1 in combination with A105/1



A803 Holder – 9863100
For transmission instruments (suitable for a wide range of various manufacturers) on A105/1 upper basket with A800 central filter



A813 Adaptor – 10456700
For reprocessing of up to 4 transmission instruments with external spray channel. To be used on A105/1 upper basket.



Adaptor – 06894700, 0689500
For W&H air scaler tips, For W&H Piezo and Prophylaxis tips. Can be connected to A813



A814 Adaptor – 10456630
For reprocessing of various types of scaler tips. To be used on A105/1 upper basket



A815 Nozzle – 10619690
Reprocessing of transmission instruments with an external spray channel. For use with A813 or A105/1 with A800 filter 4 nozzles with silicone hose.



A836 Dental nozzle set – 19721451
Set of 22 injectors for A105/1



E476 Adaptor – 5662830
Adaptors for use in trays with 5mm mesh. For transmission instruments with a diameter of 4 to 8 mm (50 per bag).



ADS1 Adaptor – 5159530
Adaptor silicone for AUF1. For connection of transmission instruments with diameter of approx. 20 mm (white).



ADS2 Adaptor – 5159540
Adaptor silicone for AUF1. For connection of transmission instruments with diameter of approx. 16 mm (green).



ADS3 Adaptor – 5159550
Adaptor silicone for AUF1. For connection of transmission instruments with diameter of approx. 22 mm (red).



AUF1 Adaptor – 5159510
Sleeve for transmission instruments.

Melag – MelaTherm Thermal Washer Disinfectors

Chemistry for MelaTherm 10 & MelaTherm 10 Evolution



Regeneration Salt (5x 2kg) – MEL-ME80000



Neodisher Z "Neutraliser" (5 LT)
– GKE-WE420233



MediClean Forte "Detergent" (5 LT)
– GKE-WE405033



MediKlar "Rinsing Agent" (5 LT)
– GKE-WE404533



See page 91
in Equipment
Catalogue for more
information on
Melatherm
Thermal Washer
Disinfectors

Adaptors

Universal adaptor with filter disc and 3 silicone inserts – MEL-ME73904



- For processing of transfer instruments, scalers of powder jet devices, etc.
- Delivered including 3 silicone inserts: green (diameter 16 mm), blue (diameter 20 mm), white (diameter 22 mm)
- Can be screwed into the injector rail or in the injector basket Flex 1.
- The filter disc included in the scope of delivery is only required for the injector rail without central filter

Double distributor – MEL-ME80200



- For mounting on the injector rail, if a number of hollow instruments are to be treated.
- For up to 2 injector nozzles (with clamps), Luer / Luer-Lock adaptors or hose connectors
- Diameter: 36 mm, Height: 34 mm

Ceramic Filter disc, 10 pieces



- MEL-ME64375
- For use with the adaptors for transfer instruments and for the triple distributor

Reusable Metal Filter Disc – MEL-ME80350



- Metal filter sieve to be cleaned in an ultrasonic bath
- Usable for adaptors for transfer instruments and for triple distributor

Distance Sleeve – MEL-ME55120



- For the maximum use of the injector rail with adaptors for handpieces, triple distributor
- When using more than 6 adaptors, a distance sleeve is required for each further adaptor
- Diameter: 10 mm, Height: 33 mm

Injection Nozzles – MEL-ME73860



- For the treatment of hollow instruments eg. Dental suction tubes etc.
- Can be screwed into the injector rail, the triple distributor or into the two-way distributor
- Diameter: 4 mm, Height: 54 mm

Clamp spring for injector nozzles



- MEL-ME00196
- Can be used for the injector nozzles if these are screwed into the injector rail
- Jam in light instruments, so that they do not slip from the injector nozzles through the rinse pressure

Melag – MelaTherm Thermal Washer Disinfectors (continued)

Adaptors (continued)



Silicone closure cap green – MEL-ME89051

- If an adaptor is not equipped with an instrument, it can be quickly and easily sealed with the silicone closure cap



Silicone closure cap blue – MEL-ME89061

- If an adaptor is not equipped with an instrument, it can be quickly and easily sealed with the silicone closure cap



Silicone closure cap white – MEL-ME89071

- If an adaptor is not equipped with an instrument, it can be quickly and easily sealed with the silicone closure cap



Rinse sleeve for instruments with outer thread – 2 mm to 10 mm – MEL-ME80260

- For hollow instruments with an exterior diameter from 2 mm to 10 mm and a non-standardised connection
- If the rinse sleeve is screwed into the injector rail, it is possible to treat instruments of up to a length of 22 cm



Rinse sleeve extension – MEL-ME80780

- For the extension of the rinse sleeve #80260
- Enables the reprocessing of magneto-restrictive ultrasonic tips
- Picture shows the combination of rinse sleeve and rinse sleeve extension



Adaptor for Intra-coupling – MEL-ME80610

- Can only be used in conjunction with the basis basket with injector rail and central filter
- To be screwed in to the injector basket Flex 1



Adaptor for Sirona Classic – MEL-ME80620

- Can only be used in conjunction with the basis basket with injector rail and central filter
- To be screwed in to the injector basket Flex 1



Adaptor for heads of KaVo contra-angle handpieces – MEL-ME80630

- Can only be used in conjunction with the basis basket with injector rail and central filter
- To be screwed in to the injector basket Flex 1



Adaptor for W&H Turbines – MEL-ME80640

- Can only be used in conjunction with the basis basket with injector rail and central filter
- To be screwed in to the injector basket Flex 1



Adaptor for Sirona Turbines – MEL-ME80650

- Can only be used in conjunction with the basis basket with injector rail and central filter
- To be screwed in to the injector basket Flex 1

Adaptors (continued)



Adaptor for KaVo Turbines – MEL-ME80660

- Can only be used in conjunction with the basis basket with injector rail and central filter
- To be screwed in to the injector basket Flex 1



Adaptor for instruments with exterior spray channels – MEL-ME74135

- For processing of surgical turbines with external spray channels. An additional adaptor for handpieces is required for internal cleaning and disinfection
- The adaptor is screwed directly into the injector rail or in the triple-double distributor



Adaptor for tips – MEL-ME80751

- The adaptor is suitable for all ultrasonic and air-scaler tips with a M 3.6 x PH 1.5 P 0.5 male thread, eg. For KaVo SONICflex quick 2008



Adaptor M3 x 0.5 mm outer thread – MEL-ME80750

- Can only be used in conjunction with the basis basket with injector rail and central filter
- For the reprocessing of instruments with M 3 x 0.5mm inner thread



Adaptor for tips – MEL-ME80755

- The adaptor is suitable for all the ultrasonic and air-scaler tips with an M 3.5 x 0.35mm male thread eg. Planmeca LM ProPower



Adaptor for tips – MEL-ME80756

- The adaptor is suitable for all ultrasonic and air-scaler tips with a M 3.0 x 0.6 mm female thread, eg. For Acteon (Satelec) Newtron, Suprasson, NSK Varios Satelec.



Adaptor for tips – MEL-ME80752

- The adaptor is suitable for all ultrasonic and air-scaler tips with a M 3.0 x 0.35 mm female thread, eg. For KaVo PiezoLED, PiezoSoft



Adaptor M3, 5 x 0.6 mm inner thread – MEL-ME80760

- Can only be used in conjunction with the basis basket with injector rail and central filter
- For the reprocessing of instruments M 3.5 x 0.6 mm outer thread



Adaptor M3 x 0.5 mm inner thread – MEL-ME80790

- Can only be used in conjunction with the basis basket with injector rail and central filter
- For the reprocessing of instruments M 3.5 x 0.5 mm outer thread

W&H Spray Can



F1 Service Oil
06691500



Spray Cap
Chuck System
02036100



Spray Cap
High Speed
02229200

For W&H turbine handpieces and air motors with Roto Quick connection



Spray Cap
Slow Speed
02038200

For contra-angle and straight handpieces with Roto Quick connection

assistina 301



Assistina 301



Oil & Activefluid Pack
02680500-S



Service Oil only
0267591



Activefluid only (1L)
06691600



Exhaust Filter
02670500



Fleece Tray Liner
Pkt 20
02694500
Pkt 5
02690300



Nose Cone O-rings
pkt 3
02695700

assistina 3X3

Assistina 3X3



Service Oil



Activefluid



Nose Cone O-rings
pkt 3
02695700

Assistina TWIN



TWIN Care Set
(Includes: Cleaning Fluid, Service Oil, HEPA Filter)
07484000

assistina TWIN



assistina 301



Adaptor for Contra-Angle and Straight Handpieces



02691000

For Sirona T1 handpiece



02693000

For FG chuck system (W&H and Sirona)



02679000

For KaVo contra-angles with removable heads



06257600

For slow speed handpieces on Assistina 3x3 only



assistina 301

assistina 3X3

Ask us
about annual
servicing on
your Steriliser
or Assistina

Adaptor For Turbine Handpieces



02690400

For all W&H products with Roto Quick system



02692000

For Sirona TS2 and TM1 handpieces



04713200

For turbine handpieces with Multiflex connection

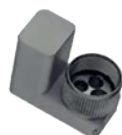


02083500

For NSK and Borden turbines 2 (3) hole connection

Interested in
improving
your steri-room
workflow? Ask us
about the latest
options available

Base Adaptors



02685000

Included in the assistina base kit, for turbine handpieces or adaptors with 4 hole connection (with or without light)

Buy an extra
base adaptor
and save time

Time Saving Hint...

If you have multiple brands of high speed (turbine) handpieces you can save time by purchasing a base adaptor for each coupling. This will enable you to switch between handpiece brands with ease.

Ask us about
Handpiece
Servicing!

Did you know that handpieces require regular servicing to maintain optimal performance? Just like the rest of your equipment, handpieces need to be on a maintenance schedule, and replaced every few years. If you are not getting optimal performance out of your handpieces, give us a call today and we can arrange to quote or assess your handpieces so that you won't have to put up with sub-performance any longer!

Always choose the right one for your handpiece

NSK Create it

NSK PANA Spray Plus Nozzles



KV Nozzle - Z090051
For KaVo® MULTIflex Coupling



SR Nozzle - Z090052
For Sirona® Quick Coupling



BA Nozzle - Z090053
For Bien-Air® Unifix® Coupling



WH Nozzle - Z090054
For W&H® Roto Quick® Coupling



For Phatelus Air Motor Heads - M070090
To be used with P183-090



Standard E-Type Nozzle - Z019090
For E-Type attachments



NSK Surgical Head Nozzle - Z114090
For E-Type attachments and surgical heads: SGM-I, SGMS-I and SGQ-H



Endo-Mate Head Nozzle - Z256090
For ENDO-MATE DT, TC, TC2 & TASKAL Wizard heads



Tip Nozzle - Z020201
For Borden 2/3 and Midwest 4 hole turbines and Borden 2/3 and Midwest 4 hole air motors and chuck mechanism



NSK Nozzle - P183090
For high speed instruments which attach to NSK Flexi Quick Coupling



iCare Complete Sets



iCare C2 Type - Y1002787 **Dual Standard Ports + Dual Rotation Ports**

- iCare unit • Power cord • Maintenance oil for iCare (1 Litre)
- Mist filter set • Oil absorber sheet • Air tube
- Chuck Cleaning Nozzle



iCare C3 Type - Y1002788 **Single Standard Port + Triple Rotation Ports**

- Power Supply: AC 100-240V 50/60Hz
- Air Pressure: 0.5 - 0.6 MPa (5.0 - 6.0 kgf/cm²)
- Weight: 6.5 kg (C2 type/C3 type)
- Dimension (mm): W280 x D240 x H350
- Solution Tank Capacity: 1,200 mL
- Connects only to Midwest 4-hole type
- Air piping is necessary (5.0 - 6.0 kgf/cm²)



iCare Adaptors

PTL Adaptor - Z257010

For NSK High Speed Handpieces for PTL-CL-LED Coupling

B2/M4 Adaptor - T904

For Borden 2 hole High Speed Handpieces

KV Adaptor - Z257020

For KaVo® High Speed Handpieces for MULTIflex® LUX Coupling

SR Adaptor - Z257023

For Sirona® High Speed Handpieces for Quick Coupling

WH Adaptor - Z257021

For W&H® High Speed Handpieces for Roto Quick Coupling

BA Adaptor - Z280022

For Bien-Air® High Speed Handpieces for Unifix® Coupling

F-Type Adaptor - Z280042

For ENDO-MATE TC2, DT/ TASKAL Wizard Heads



iCare Spare Parts



(1 Litre)

Maintenance Oil for iCare - Z016130

1 Bottle, 1 Litre



Mist Filter Set - Y900159

Pack of 12



Oil Absorber Sheet - U433135

Pack of 10



Chuck Cleaning Nozzle - Z257301

PSPiX²

Check our
website for
the latest
offers!



reddot design award
winner 2015

**PRICE
REDUCED!**

**2 Years
Warranty**

Windows compatible: SA-S7020006
Mac compatible: SA-S7020010

**PSPiX financed
from as little
as \$7 per day**

Standard Imaging Plate



Size 0

Size 1

Size 2

Size 3

PSPiX²

	Set of 2
Size 0 (22 x 35 mm)	SA-990215
Size 1 (24 x 40 mm)	SA-990216
Size 2 (31 x 41 mm)	SA-990217
Size 3 (27 x 54 mm)	SA-990218

Protective Bag for Imaging Plate



Size 0

Size 1

Size 2

Size 3

PSPiX²

set of 250

Size 0	SA-700342L
Size 1	SA-700343L
Size 2	SA-700344L
Size 3	SA-700345L

PSPiX 1st generation

set of 250

Size 0	SA-700342L
Size 1	SA-700343L
Size 2	SA-700344L
Size 3	SA-700345L

Size 4 Plate Kit

SA-990252 Size 4 Kit (includes the following:)

SA-700644	Bags for imaging plate size 4
SA-990248	Imaging plate size 3 (3 SET)
SA-990251	Plastic Support Size 4 (1/pc)

Bag & Cover for Imaging Plate

PSPiX²



Size 0

Size 1

Size 2

Size 3

PSPiX 1st generation



Size 0

Size 1

Size 2

Size 3

PSPiX²

set of 300

Size 0	SA-700546
Size 1	SA-700547
Size 2	SA-700548
Size 3	SA-700549

PSPiX 1st generation

set of 250

SA-700339L
SA-700340L
SA-700341L



PSPIX 1st Generation Consumables



Imaging plate storage box
(delivered without imaging plates) -
SA-S700482



«Medical device»
power supply
for PSPIX® -
SA-703004

New PSPIX®2 Consumables



Bag & cover for imaging plate
start up kit (set of 100 pieces of
size 1 and 100 pieces of
size 2) - SA-700550



Imaging plate storage box
(delivered without imaging
plates) - SA-990219



Stylus for PSPIX®2 touchscreen
- SA-5132



Sopro Camera Sheaths & Tips



Sopro Camera Sheaths
- Pack of 500
SA-403017



Sopro Camera Tips
- Set of 4
SA-990135



X-Mind™ Imaging Consumables



Sopro Tabs - Foam Adhesive
Tabs (pack of 500) - SA-700406

See page 30
in Equipment
Catalogue for more
information on PSPIX
and page 31 for
X-mind Unity
and DC

Imaging Plates



Vatech VSP Plate Size 0
V1400144



Vatech VSP Plate Size 1
V1400145



Vatech VSP Plate Size 2
V1400146



Vatech VSP Plate Size 3
V1400147

Protective Covers & Hygiene Bags



Vatech VSP Protective Cover Size 2 (100)



Size 2

Vatech VSP Hygiene Bag Size 2 (500)



Size 3

Vatech VSP Hygiene Bag Size 2 (500)



See page 35
in Equipment
Catalogue for more
information on
Vatech VSP Plate
Scanners

EzSensor Covers



D0000454 Hygiene Vinyl Pack
For Size 1.0 Sensor (pack of 50)



D0000455 Hygiene Vinyl Pack
For Size 1.5 Sensor (pack of 50)



D0000456 Hygiene Vinyl Pack
For Size 2.0 Sensor (pack of 50)



M0500281 Silicon Cover/Si 1.0 – For Size 1.0 Sensor (each)



M0500279 Silicon Cover/Si 1.5 – For Size 1.5 Sensor (each)



M0500286 Silicon Cover/Si 2.0 – For Size 2.0 Sensor (each)

Compatible Sensors:

- Classic
- Premium
- HD
- Wave



EzRay Air™ Portable



See page 32
in Equipment
Catalogue for more
information on
Vatech Intra-oral
X-ray generators

EzRay Air™ Wall



ScanX Touch Parts & Misc

SCAN►X®



J1015-0 Duo Touch Plate (PSP) Guide; Size 0



J1015-1 Duo Touch Plate (PSP) Guide; Size 1



J1015-2 Duo Touch Plate (PSP) Guide; Size 2



J1015-3 Duo Touch Plate (PSP) Guide; Size 3



J1015-4 Duo Touch Plate (PSP) Guide; Size 4



J1020 ScanX Duo Touch Cleaning Sheet, PKG/12



J1025 ScanX Duo Touch Cleaning Sheet, PKG/25



73470 Plate Transfer Box

IDX Phosphor Storage Plates

J1240-0 Intraoral IDX PSP & Barrier Envelope Pack
Size 0; 2 IDX PSPs & 1,000 Barriers

J1240-1 Intraoral IDX PSP & Barrier Envelope Pack
Size 1; 2 IDX PSPs & 1,000 Barriers







J1240-2 Intraoral IDX PSP & Barrier Envelope Pack
Size 2; 2 IDX PSPs & 1,000 Barriers

J1240-3 Intraoral IDX PSP & Barrier Envelope Pack
Size 3; 2 IDX PSPs & 1,000 Barriers

J1240-4 Intraoral IDX PSP & Barrier Envelope Pack
Size 4; 2 IDX PSPs & 1,000 Barriers



ScanX Barrier Envelopes

	73248-0	Patented, Easy-Open Barrier Envelopes; Size 0 (100 Pack)
	73248-1	Patented, Easy-Open Barrier Envelopes; Size 1 (100 Pack)
	73248-2	Patented, Easy-Open Barrier Envelopes; Size 2 (100 Pack)
	73248-2K	Patented, Easy-Open Barrier Envelopes; Size 2 (100 Pack)
	73248-3	Patented, Easy-Open Barrier Envelopes; Size 3 (100 Pack)
	73248-4	Patented, Easy-Open Barrier Envelopes; Size 4 (50 Pack)

SCAN►X®



CamX Accessories

	J2030	CamX Elara/ Spectra Camera Sheaths (500 Pack)
	J2321	CamX Spectra - 8mm Distance Spacers (25 Pack)
	J2020	CamX Elara/CamX Spectra USB Cable 8ft
	J2025	CamX Elara/Spectra Camera Sheaths (100 Pack)
	J2040	CamX Elara/CamX Spectra Wall Mount
	J2061	CamX Elara/Spectra USB Cable Extender 5.9 ft
	J2021	CamX USB Cable Holder

CAM►X®





implantmed



implantMED

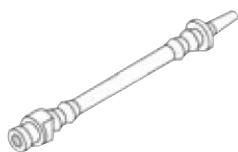


elcomed



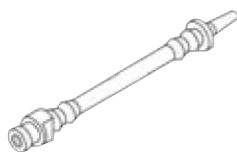
elcoMED

Pump Tubing with Nipple



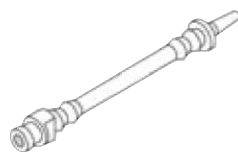
04013900 (1 pcs)

Pump Tubing with Nipple



04013900 (1 pcs)

Pump Tubing with Nipple



04013900 (1 pcs)

Disposable Irrigation Tubing



00929300 (10pcs, 2.2m)
00929400 (10pcs, 3.8m)

Pump Tubing



04014000 (3 pcs, 85mm)

Pump Tubing



04014000 (3 pcs, 85mm)

Pump Tubing



04014000 (3 pcs, 85mm)

Disposable Irrigation Tubing Set



04365300 (6 pcs, 2.2m)
04365100 (6 pcs, 3.8m)

Disposable Irrigation Tubing



00929300 (10pcs, 2.2m)

Disposable Irrigation Tubing



00929300 (10pcs, 2.2m)
00929400 (10pcs, 3.8m)

Disposable Irrigation Tubing



00929300 (10pcs, 2.2m)

Disposable Y-Switch



04366300 (4 pcs, 2.2m)

Disposable Irrigation Tubing Set



04363600 (6 pcs, 2.2m)

Disposable Irrigation Tubing Set



04363600 (6 pcs, 1.8m)
04364100 (6 pcs, 3.5m)

Disposable Irrigation Tubing Set



04363600 (6 pcs, 1.8m)

Ask us about bulk prices on disposable irrigation tubing sets

Ask us about Autoclave Servicing & Validation



Bone Surgery



Tip B1 05530100
Fine-tooth saw for fine cuts, with little bone loss when harvesting bone blocks.



Tip B2R 06958600
Fine-toothed instrument for horizontal cuts, with little bone loss, in hard-to-reach areas. Right-curved.



Tip B2L 05544400
Fine-toothed instrument for horizontal cuts, with little bone loss, in hard-to-reach areas. Left-curved.



Tip B3 05542100
Sharp instrument for modelling and contouring the bone surface, and collecting bone chips.



Tip B4 05543800
Sharp chisel for splitting the alveolar ridge.



Tip B5 05534500
Sharp scraper for collecting bone chips and detaching bone flaps.



Tip B6 07022500
Special saw for fine and deep cuts in record time. Suitable for harvesting bone blocks, splitting the alveolar ridge, separating tooth roots and for root-tip resections.



Tip B7 07022600
Special saw for fine and deep cuts in record time. Suitable for harvesting bone blocks, splitting the alveolar ridge, separating tooth roots and for root-tip resections.

Lateral Sinus Lift



Tip S1 05542900
Diamond-coated instrument or preparation of a bone flap for lateral sinus floor augmentation and for crown edge extensions.



Tip S2 05534700
Instrument with diamond-coated ball for preparation of a bone flap for lateral sinus floor augmentation and for crown edge extensions.



Tip S3 05508200
Instrument for gentle detachment of the Schneiderian membrane from the bone. The coolant film protects the Schneiderian membrane by means of three coolant openings.



Tip S4 05542300
Instrument with rounded edges for atraumatic detachment of the Schneiderian membrane.



Tip S5 05542800
Instrument with rounded edges for atraumatic detachment of the Schneiderian membrane.

Extraction



Tip EX1 06069300
Instrument for atraumatic tooth extraction to preserve the alveolar bone.



Tip EX2 06071100
Instrument for atraumatic tooth extraction to preserve the alveolar bone.

Retrograde Endodontics



Tip R1D 05975200
Straight, diamond-coated instrument for retrograde root canal preparation.



Tip R2RD 05991000
Slightly right-curved, diamond-coated instrument for retrograde root canal preparation.



Tip R2LD 05999400
Slightly left-curved, diamond-coated instrument for retrograde root canal preparation.



Tip R3D 05998800
Angled, diamond-coated instrument for retrograde root canal preparation.



Tip R4RD 06005000
Strongly right-curved, diamond-coated instrument for retrograde root canal preparation.



Tip R4LD 06004700
Strongly left-curved, diamond-coated instrument for retrograde root canal preparation.

Perio



Tip P1 06067700
For removing concretions in the subgingival region. Ideal for treatment of deep, periodontal pockets.



Tip P2RD 06061700
Right-curved, diamond-coated tip for periodontal debridement. Suitable for open root planning.



Tip P2LD 06061800
Left-curved, diamond-coated tip for periodontal debridement. Suitable for open root planning.

Implant Preparation and Crestal Sinus Lift



Tip I1 07786800
Diamond-coated instrument with depth marks for pilot preparation with the correct axial alignment.



Tip Z25P 07785600
Diamond-coated instrument for expansion of the pilot hole (up to diameter of 2.5mm) in the cortical area.



Tip I2A 07797800
Instrument for gradual preparation of the implant bed (up to 2mm depth) in the anterior region.



Tip I2P 07788800
Instrument for gradual preparation of the implant bed (up to 2mm depth) in the posterior region.



Tip I3A 07885600
Instrument for gradual preparation of the implant bed (up to 3mm depth) in the anterior region.



Tip I3P 07887000
Instrument for gradual preparation of the implant bed (up to 3mm depth) in the posterior region.



Tip Z35P 07980600
Diamond-coated instrument for expansion of the pilot hole (up to diameter of 3.5mm) in the cortical area.



Tip I4A 07889400
Instrument for preparation of the implant bed (up to 4mm) in the anterior region.



Tip I4P 07889500
Instrument for preparation of the implant bed (up to 4mm) in the posterior region.



Tip Z25P 07785600
Diamond-coated instrument on the front face, with internal coolant supply for preparing the base of the sinus (up to 2.5mm) and for lifting the Schneiderian membrane using a cooling medium.



Tip Z35P 07980600
Diamond-coated instrument on the front face, with internal coolant supply for preparing the base of the sinus (up to 3.5mm) and for lifting the Schneiderian membrane using a cooling medium.



W&H Piezomed Surgical Tip Kits



Perio Tip Kit

07173400

Consists of: P1, P2RD, P2LD



Implant/Crestal Anterior Tip Kit

07997090

Consists of: I1, I2A, I3A, I4A, Z25P, Z35P



Implant/Crestal Posterior Tip Kit

07997110

Consists of: I1, I2P, I3P, I4P, Z25P, Z35P



Lateral Sinus Lift (Special) Tip Kit

07173200

Consists of: S1, S2, S3, S4, S5



Extraction Tip Kit

07173500

Consists of: EX1, EX2



Endo Tip Kit

07173300

Consists of: R1D, R2RD, R2LD, R3D, R4RD, R4LD



piezomed

See page 34 in Equipment Catalogue for more information on Piezomed by W&H



Bone Surgery Tips



BS1 Slim II Tip
9mm saw intended for the in-depth cutting of very dense cortical bones
F87525



BS1 Long II Tip + Wrench
15mm saw facilitating ramus bone grafting
F87527



BS2L II Tip
left-oriented bone saw for cutting ramus cortical bone
F87502



BS2R II Tip
right-oriented bone saw for cutting ramus cortical bone
F87503



BS4 II Tip
Circular scalpel for osteoplasty and harvesting of bone particles or chips
F87504



BS5 II Tip
Flat scalpel for fine osteotomies
F87505



BS6 II Tip
Curved scalpel particularly recommended for osteoplasty
F87506



Caring People. Improving Lives

Ligament Cutting Tips



LC1 II Tip F87507
Ultrasonic periosteal intended for syndesmotomy and periradicular osteotomy



LC2 II Tip F87542
Very slim tip, allows access to the tight spaces between the root and the alveolar bone



LC2L II Tip F87543
Left-oriented at 45 degrees tip facilitates access to the posterior areas



LC2R II Tip F87544
Right-oriented at 45 degrees tip facilitates access to the posterior areas



NINJA II Tip F87545
Saw-tooth tip particularly efficient for hemi-sections and root amputations

Crown Extension Tips



CE1 II Tip F87551
Diamond-coated spherical tip (1.75mm) designed for osteoplasty in oral palatal zones



CE2 II Tip F87552
Diamond-coated spherical tip (1.2mm) designed for osteoplasty in interproximal zones



CE3 II Tip F87553
For a fast restoration of the biologic width (laser mark placed at 3mm)

Piezocision Tips



PZ1 II Tip
Anterior corticotomies
F87571



PZ2L II Tip
Lateral corticotomies on left vestibular arch
F87572



PZ2R II Tip
Lateral corticotomies on right vestibular arch
F87573



PZ3 II Tip
Anterior corticotomies for root proximity concerns
F87574

Crest Splitting Tips



CS1 II TIP F87561
Fine tip dedicated to pilot osteotomy up to 8mm of depth



CS2 II TIP F87562
Tip dedicated to the second osteotomy up to 8mm of depth



CS3 II TIP F87563
Scalpel used for the discharge incisions in mesial and distal sides, up to 8mm of depth



CS4 II TIP F87564
Conical tip for bone expansion. Tip thickness 1.8mm at 8mm



CS5 II TIP F87565
Conical tip for bone expansion. Tip thickness 2.75mm at 8mm



CS6 II TIP F87566
Conical tip for bone expansion. Tip thickness 3.75mm at 8mm

Sinus Lift Tips



SL1 II Tip
Diamond-coated tip for vestibular bone window cut and for attenuation of sharp angles
F87511



SL2 II Tip
Diamond-coated ball tip for smoothing the vestibular bone window and precise osteoplasty
F87512



SL3 II Tip
Plateau tip served for sinus membrane elevation on the window's edges
F87513



SL4 II Tip
Spatula served for sinus membrane elevation inside the sinus
F87514



SL5 II Tip
Spatula used for sinus membrane elevation inside the sinus and for disengagement of anatomical structures
F87515

Intra Lift Tips



TKW1 Tip F87531
Conical and diamond-coated tip for pilot drilling in very dense cortical bone (1.35mm)



TKW2 Tip F87532
Cylindrical and diamond-coated tip dedicated for drilling and fracturing the sinus floor (2.1mm)



TKW3 Tip F87533
Cylindrical tip dedicated to drill and widen the access canal to sinus membrane (2.35mm)



TKW4 Tip F87534
Cylindrical and diamond-coated tip intended for the receptacle preparation and widening the access canal to the sinus membrane (2.8mm)



TKW5 Tip F87535
Tip 3mm to be placed in the receptacle preparation for sinus membrane elevation by crestal approach



Acteon Surgical Tip Kits

Osteotomy/Osteoplasty - Bone Surgery II Tip Kit

F87509

Clean and thin cut for maximal bone volume



Lateral Sinus Lift - Sinus Lift II Tip Kit

F87519

Unbeatable comfort: selective and haemostatic cut



Crest Splitting - Crest Splitting II Tip Kit

F87567

Rapid and minimally invasive technique for controlled expansion



Crestal Sinus Lift - Intra Lift II Tip Kit

F87536

Minimally invasive surgery for smooth sinus floor fracture



Accelerated Orthodontic Surgery - Piezocision Tip Kit

F87576

Micro-incisions to ease orthodontic tooth movement



Crown Extension - Crown Extension II Tip Kit

F87554

Incomparable precision and accessibility



Syndesmotomy - Extraction II Tip Kit

F87546

For maximum bone preservation



Universal - The Essential Solo Tip Kit

F87528

The 6 fundamental ACTEON Equipment tips



Universal Kit

F87539

BS6 11, LC1 11, LC 11, CE1 11, CE3 11, PZ1 11 tips, an autoclavable metal support, an autoclavable universal wrench



PIEZOTOME CUBE

See page 31 in Equipment Catalogue for more information on Piezotome Cube by Acteon



Scavenging Hoods and Tubing Sets



Axess Low Profile Nasal Hoods

The Axess low profile design provides unencumbered mouth access whilst its small lightweight scavenging tubing is easy to work around, enabling clinicians to deliver excellent efficient care to more patients.



Designed for the lightweight Axess autoclavable tubing set.

Clearview Nasal Hoods

Accutron's Clearview Scavenging Hood System incorporate a double hood with a transparent outer hood, allowing the **doctor to monitor the patient's breathing** for increased safety.

Combined with scented hoods, Clearview combined with NO₂ reduces patient anxiety for treatment.



Available to fit existing Tubing Sets - see below for Adapter Kits.

Nasal Hoods and Tubing Sets for Accutron and other Brand RA Systems

Axess Low Profile Nasal Hoods



Single use Hoods

Set of 24

Small Size (Pedo)

Unscented Ref. AC.53037-9
Bubblegum Scent Ref. AC.53037-12
Mint Scent Ref. AC.53037-16

Medium Size (Adult)

Unscented Ref. AC.53035-9
Bubblegum Scent Ref. AC.53035-12
Mint Scent Ref. AC.53035-16

Large Size (Adult)

Unscented Ref. AC.53034-9
Bubblegum Scent Ref. AC.53034-12
Mint Scent Ref. AC.53034-16

Axess Scavenging Tubing Set

Lightweight and Autoclavable, allows you to fit the Axess Hoods to any system type!

For tubing with Scavenging Control valve
use with non-Accutron existing systems
AC.53005

For tubing less Scavenging Control valve
use with existing Accutron systems
AC.53006

Save 30% on Axess Tubing Set with your 1st Axess Hood Order!

Clearview Hoods



- Fits Accutron Scavenging Sets
- Fits Porter™ Scavenging Sets
- Fits Matrx™ Scavenging Sets*

Single Use Hoods - Set of 12

Adult Size

Unscented Ref. AC.33035-9
Orange Scent Ref. AC.33035-10
Vanilla Scent Ref. AC.33035-14
Mint Scent Ref. AC.33035-16

Pedo Size

Orange Scent Ref. AC.33037-10
Strawberry Scent Ref. AC.33037-16
Bubblegum Scent Ref. AC.33037-12
Grape Scent Ref. AC.33037-17

Converter Kits for
Porter™ & Matrx™
Tubing Sets

NO CHARGE

For Clearview Hood

For Porter Tubing Set No Adapter Needed
For Matrx Tubing Set Ref. AC.35360

For PIP+ Hood

For Porter Tubing Set Ref. AC.35000
For Matrx Tubing Set Ref. AC.35000M
For ANS Tubing Set Ref. AC35325



PIP+ Hoods



- Fits Accutron PIP+ Tubing Sets
- Fits Porter™ Scavenging Sets*
- Fits Matrx™ Scavenging Sets*

Single Use Hoods - Set of 24

Large Size

Variety Set Ref. AC.33015-3
Mint, Peach and Vanilla Scents

Medium Size

Variety Set 1 Ref. AC.33016-1
Orange, Strawberry & Bubblegum Scents
Variety Set 2 Ref. AC.33016-3
Mint, Peach and Vanilla Scents

Small Size

Variety Set Ref. AC.33017-1
Orange, Strawberry & Bubblegum Scents

Autoclavable Hood

Multiple Use

Large Size

Ref. AC.33018

Medium Size

Ref. AC.33019

Small Size

Ref. AC.33020



NSK Create it

NSK Varios2 Optic Handpiece LED Optic

VA2-LUX-HP

E351050



NSK Varios2 Non-Optic Handpiece

VA2-HP

E350050



NSK Varios Optic Handpiece

VA-LUX-HP

E250050



NSK Varios Non-Optic Handpiece

VA-HP

E350050



Universal Tips



G1 - NSK/Satalec
Z217101
G1E - EMS

G2 - NSK/Satalec
Z217102
G2E - EMS

G3 - NSK/Satalec
Z217103
G3E - EMS

G4 - NSK/Satalec
Z217104
G4E - EMS



G5 - NSK/Satalec
Z217105
G6E - EMS

G6 - NSK/Satalec
Z217106
G6E - EMS

G8
Z217108

G9
Z217108

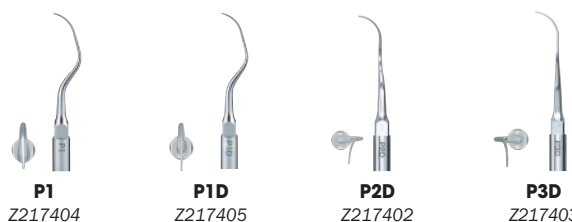


G11
Z217411

G12
Z217412

G13
Z217413

Periodontic Tips



P1
Z217404

P1D
Z217405

P2D
Z217402

P3D
Z217403



P10
Z217410

P11R
Z217408

P11L
Z217409

P20 - NSK/Satalec
Z217420
P20E - EMS



P21R - NSK/Satalec
Z217422
P21RE - EMS

P21L - NSK/Satalec
Z217421
P21LE - EMS

P25R - NSK/Satalec
Z217424
P25RE - EMS

P25L - NSK/Satalec
Z217425
P25LE - EMS

Periodontic Irrigation & Cleaning Tips



P40
F02170

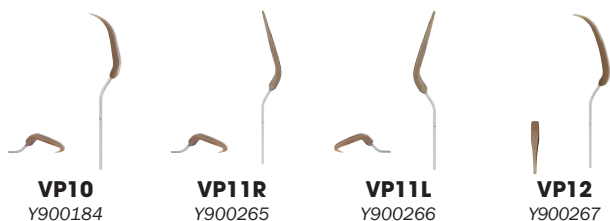
P41
F02171

See pages 50-53
in Equipment
Catalogue for
NSK Handpieces





Periodontic Maintenance Tips



Periodontic Tips Kits

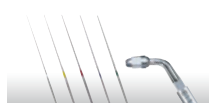


Perio Kit A
Y900144

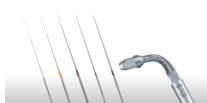


Perio Kit B
Y900145

Endodontic Tips Kits



E11
Z217031



E12
Z217032

Endodontic Tips



Retrograde Endodontics Tips



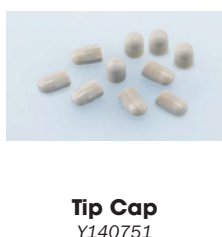
Extraction Tips



Restorative Tips



Prosthetics Tips



V-TIP System

ASK US FOR FURTHER INFORMATION
ON V-TIP SYSTEM MODELS

Restorative

- For Minimal Intervention



- For Finishing/Trimming/Polishing

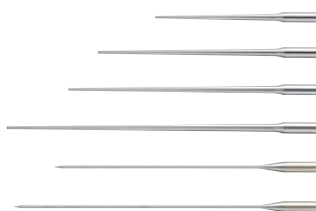


- For Caries Removal

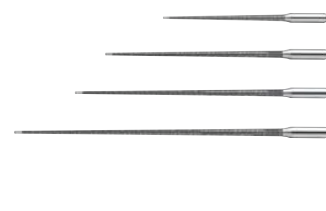


Endodontics

- For Root Canal Cleaning



- For Root Canal Enlargement



Assorted Tip Kits



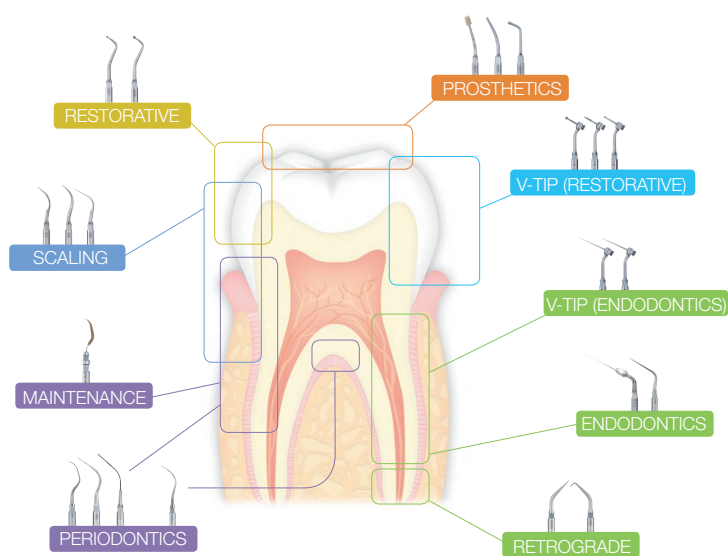
Minimal Intervention
Y900158



Finishing, Trimming, Polishing
Y900168



Caries Removal
Y900164



Bone Surgery Tips



SG1 Z305101
HSG1 Z305151
SG1A Z305138
SG8 Z305139



HSG8 Z305155
SG8A Z305139
SG14R Z305122
SG14L Z305123



HSG8R Z305156
HSG8L Z305157
SG2R Z305102
SG2L Z305103



SG19 Z305135
SG30 Z305137
SG58 Z305104

Scraper Tips



SG3 Z305104
SG4 Z305105
SG5 Z305106

Extraction Tips



SG17 Z305132
SG18R Z305133
SG18L Z305134

Implant Preparation Tips



SG15A Z305124
SG15B Z305125
SG15C Z305126
SG15D Z305127



SG16A Z305128
SG16B Z305129
SCL2D Z305182
SCL4D Z305184

Socket Lift (Crestal Approach) Tips



SCL1D Z305171
SCL3D Z305173
SCL5D Z305175



SCL1 Z305170
SCL3 Z305172
SCL5 Z305174



Sinus Lift Tips



Sinus Membrane Detachment Tips



Scaling Tips



Periodontic Tips



Periodontic Control Tips



Endodontics Tips



Tip Kits



Basic H-S Kit
Y1002775
• H-SG1, SG3, SG5, SG6D, SG7D, SG11
• Tip holder



Sinus Lift Kit
Y900689
• SG1, SG3, SG6D, SG9, SG10, SG11
• Tip holder



Bone Cut Kit
Y900688
• SG1, SG2R, SG4, SG2L, SG6D
• Tip holder



Endo-S Kit
Y900691
• G1-S, E30RD-S, E30LD-S, E31D-S, E32D-S
• Tip holder



Implant Prep Kit
Y900774
• SG15A, SG15B, SG16A, SG16B
• Tip holder



Socket Lift Kit I
Y1002841
• SCL1D, SCL2D, SCL1
• VS Tip Wrench
• Tip holder • Manual



Socket Lift Kit II
Y1002842
• SCL2D, SCL3D, SCL4D, SCL3
• VS Tip Wrench
• Tip holder • Manual



Acteon Newtron Scaler Handpiece

SA-F12281

NEWTRON



Acteon Newtron LED Scaler Handpiece

SA-F12609

NEWTRON
LED



Pure Newtron Slim Handpiece

SA-F12901

NEWTRON
SLIM



Pure Newtron Slim B.LED HP with Blue Ring

SA-F12900

NEWTRON B.LED
SLIM



Acteon Wrenches

Dynamomatic Wrench F81330



Scaler Wrenches

SA-F81302 (Blue)



Prophylaxis Scaling Tips



N°1
F00246
Universal



N°2
F00247
High power



N°3
F00248
Removing stains



10P
F00253
Supra and sub-
gingival <3 mm



10X
F00359
Interproximal



10Z
F00254
Subgingival



N°1S
F00245
Supra and sub-
gingival

**PRICES
REDUCED!**

Periodontic Tips



H1
F00366
Anterior teeth,
diamond-coated



H2L
F00367
Premolars & molars,
left-angled



H2R
F00368
Premolars &
molars, right-angled



H3
F00369
Anterior teeth,
curette



H4L
F00114
Premolars &
molars, left-angled



H4R
F00115
Premolars &
molars, right-angled



P2L
F00090
Narrow pockets
debridement, left



P2R
F00091
Narrow pockets
debridement, right



TK1-1S
F01001
Short probe



TK1-1L
F01004
Long probe



TK2-1L
F02162
Premolars &
molars,
left-angled



TK2-1R
F02161
Premolars &
molars,
right-angled

PerioFine Tips



PFU
F02170
Universal



PFL
F02171
Left-angled



PFR
F02172
Right-angled

Endodontic Scaling Tips



ET18D
F88017
Cavity access
finishing



ETBD
F88020
Exploration



ET25S
F88021
Short Ti-Nb tip



ET25
F88018
Ti-Nb tip



ET25L
F88022
Long Ti-Nb tip



ET20
F88011
Universal



ETPR
F88019
Loosening



ET40
F88012
Length 40 mm



ET40D
F88014
Length 40 mm,
diamond-coated



ET20D
F88013
Length 20 mm,
diamond-coated



SO4
F88009
Gutta Percha
condenser



IRR 20-21 (x4)
F43807
Ø 0.2 mm
length 21 mm



IRR 20-25 (x4)
F43808
Ø 0.2 mm
length 25 mm



IRR 25-21 (x4)
F43805
Ø 0.25 mm
length 21 mm



IRR 25-25 (x4)
F43806
Ø 0.25 mm
length 25 mm



K15-25 (x4)
F43717
Ø 0.15 mm
length 25 mm

Restorative Scaling Tips



PMS1
F02254
Preparation of the dentin



PMS2
F02255
Preparation/finishing



PMS3
F02256
Finishing



PM1
F02250
Preparation of the dentin



PM2
F02251
Preparation/finishing



PM3
F02252
Finishing



PM4
F02253
Corono-radicular
preparation, conical,
diamond-coated 46 µm



C20
F00113
Inlay/onlay condensation



5AE
F00249
Loosening with spray

Conservative & Restorative Scaling Tips



ET40
F88012
Length 40 mm



ET40D
F88014
Length 40 mm,
diamond-coated



ET20D
F88013
Length 20 mm,
diamond-coated



SO4
F88009
Gutta Percha
condenser

Implant Cleaning Tips



PH1 (x4)
F00702
Anterior teeth



PH2L (x4)
F00705
Premolars & molars,
left-angled



PH2R (x4)
F00706
Premolars & molars,
right-angled

Perfect Margin Veneer Tips



**Diamond-coated
Ball**
PMV1
107µm



**Diamond-coated
External Spoon**
PMV2
107µm



**Diamond-coated
Internal Spoon**
PMV3
107µm



**Smooth External
Spoon**
PMV4

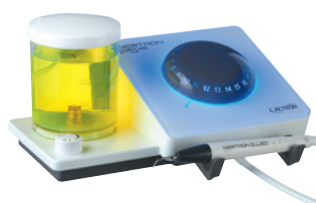


**Smooth Internal
Spoon**
PMV5



Smooth Ball
PMV6

See page 30 in
Equipment Catalogue
for more information
on Acteon Newtron
Benchtop Scalers



Surgical Endodontic Scaling Tips



AS3D
F00065
Length 3 mm
Universal



AS6D
F00079
Length 6 mm



AS9D
F00067
Length 9 mm



ASLD
F00080
Length 3 mm, left-angled (premolars)



ASRD
F00081
Length 3 mm, right-angled (premolars)



P14D
F00106
Universel



P15LD
F00107
Left-angled



P15RD
F00108
Right-angled



S12-70D
F00118
70° Universal

Conservative & Restorative Scaling Tips



EX1
F02040
Occlusal surface



EX2
F02041
Proximal surface



EX3
F02042
Distal surface



EX-R
F02043
45° to the right



EX-L
F02044
45° to the left

Implant Protect Tips



IP1
F02121
Implant abutments and wide threads



IP2L
F02122
Medium implant threads, left-angled



IP2R
F02123
Medium implant threads, right-angled



IP3L
F02124
Narrow implant threads, left-angled



IP3R
F02125
Narrow implant threads, right-angled



Endodontics Tips



K10-21 (x4)
F43710
Ø 0.1/length 21 mm



K10-25 (x4)
F43712
Ø 0.1/length 25 mm



K15-21 (x4)
F43715
Ø 0.15/length 21 mm



K25-21 (x4)
F43725
Ø 0.25/length 21 mm



K25-25 (x4)
F43727
Ø 0.25/length 25 mm



K30-21 (x4)
F43730
Ø 0.3/length 21 mm



K30-25 (x4)
F43732
Ø 0.3/length 25 mm

HOW WORN ARE YOUR CURRENT SCALER TIPS? FOR OPTIMUM PERFORMANCE, AND TO PROTECT YOUR SCALER HANDPIECE THREADS, BE SURE TO REGULARLY REPLACE YOUR SCALER TIPS.

Newtron / Pure Newtron Module Kits

Newtron Kit

SA-F55385

Newtron LED Kit

SA-F55389

Kit consists of:

- SP Newtron (LED/Non-LED Newtron module + handpiece + 3 tips)

Pure Newtron Slim B.LED Grey3 61"

SA-F55469

Pure Newtron B.LED 81"

SA-F55470

Pure Newtron Slim 81"

SA-F55472

Pure Newtron Slim 61"

SA-F55471



**F.L.A.G. for B.LED
5 X 1.5ml**
SA-F62200

**F.L.A.G. for B.LED
100ml**
SA-F62203



**PRICES
REDUCED!**

Satalec Scaler Tip Kits

Scaling Kit (Prophylaxis)

SA-F00934



Perio Kit

SA-F00936



EndoSuccess Retreatment Kit

SA-F00737



EndoSuccess Apical Surgery Kit

SA-F00069



PerfectMargin Shoulder Kit

SA-F00736



PerfectMargin Rounded Kit

SA-F00738



Excavus Kit

SA-F00739



NEW Implant Protect Kit

SA-F02120



**100% Pure
Titanium**



Universal/Prophy Tips



Tip 1U with tip changer 05076200

Tip 2U with tip changer 05076300

Tip 2APL 05153300



Tip 3U with tip changer 05368200

Tip 1P with tip changer 05370400

Tip 4U with tip changer 05849201



Tip 1R with tip changer 05849401

Tip set: 1U, 3U, 1P 05851800

Tip 3PR with tip changer 06364900



Tip 3PI with tip changer 06365000

Tip 1E with tip spanner 06367900

Tip 2E with tip spanner 06368000

Endo Tips



Tip 5P with tip changer 07965600

Tip 5PI with tip changer 07965620

Tip 5Pr with tip changer 07965660



Tip 4P with tip changer 07965670

Tip 2US with tip changer 07983830

Tip 3US with tip changer 07983850



1PS (Satelec thread, incl. Tip changer) 07983860

Tip 4PS with tip changer 07983870

Tip 1ES with spanner 07983880



Tip 1UQ with tip changer 08023920

2UQ (Quick connection, incl. Tip changer) 08023930

Tip 3UQ with tip changer 08023940

See page 40 in Equipment Catalogue for more information on W&H Piezo Scalers





Perio Tips



Tip 3E with tip spanner
06368100

Tip 2R with tip changer
06368400

Tip 3Rm with tip changer
06368500



Tip 3Rd with tip changer
06368600



Implant tip set: x 11
06370500

Tip 1AP
07009100



Tip 1AU
07159700

Tip 2AU
07159800

Tip 3AU
07159900



Tip 4E with tip spanner
07812300

Tip 5E with tip changer
07812400

Tip 6E with tip spanner
07812500

Implant Cleaning Tips



Tip 1I Implant-clean
06370500

Tip 1IQ Implant-clean
08024050

Restoration Tips



1PQ (Quick connection, incl. Tip changer)
08023950

Tip 3PrQ with tip changer
08023960

Tip 3PIQ with tip changer
08023980



Tip 4PQ with tip changer
08024010

Tip 5PrQ with tip changer
08024020

Tip 5PIQ with tip changer
08024030



Tip 5PQ with tip changer
08024040

Tip set implant clean 3x 1IQ
08026380



Tip 2APR
05254400



Tip 3AP
05280200

Tip 1US with tip changer
07983820

1IQ (3pcs, Quick connection, incl. Tip changer)
08024050

See page 40 in Equipment Catalogue for more information on W&H Piezo Scalers



Air Scaler Tips



Tip 1AU

07159700

For removal of calculus, universally applicable, also for curved molar surfaces inclined towards lingual

Tip 2AU

07159800

for anterior teeth of the lower jaw, lingual surfaces and in cases of stubborn adhesion of thick, hard collars of dental calculus

Tip 3AU

07159900

for removing plaque from the neck of the tooth and removing nicotine stains



Tip 1AP

07009100

removal of subgingival deposits, especially suitable for deep periodontal pockets



Tip 2API

05153300

left-curved tip for removal of subgingival deposits



Tip 2APr

05254400

right-curved tip for removal of subgingival deposits



Tip 3AP

05280200

with a diamond coating on the instrument tip for periodontal debridement of furcations and concavities



proxeo AURA

See page 43 in Equipment Catalogue for more information on Proxeo Aura Air Scaling system

W&H Air Polishing System – ‘Aura’

Application	Setting	Powder	Spray Head
			
Supragingival	Prophy	Prophyxis Powder SOFT / Prophyxis Powder SMOOTH	Standard / Optional

EMS Scaler Handpiece

EM-EN-041



PIEZON[®] NO PAIN handpiece

EM-EN-061



PIEZON[®] NO PAIN LED handpiece

EM-EN-60



EMS Scaling Tips



A

EM-DS-001

For removing supragingival deposits in all quadrants



P

EM-DS-011

For removing supra- and subgingival calculus in all quadrants



PS

EM-DS-016

For removing calculus in deep periodontal pockets in all quadrants



B

EM-DS-003A

For cleaning lingual surfaces with heavy stain and calculus



C

EM-DS-002A

For removing deposits and stain – especially suitable for removing bonding residue, (e.g. in orthodontics)

EMS Scaler Handpiece Consumables



O-rings

EM-BC-077 Water O-Ring (base)



Cone Piece Seal

AB-348/A

EMS Endo System Kits



Starter Kit

FS-279

Refills (6)

DT-069A

EMS Implant Cleaning Kits



Starter Kit FS-295

Refills (4) DT-065A

EMS Perio Kits



PL1

EM-DS-030

Left-curved instrument for periodontal debridement – especially suitable for difficult-to-reach interproximal surfaces



PL2

EM-DS-031

Same as PL1 instrument with a right curve



PL3

EM-DS-032

Instrument for cleaning and disinfecting periodontal pockets – especially suitable for follow-up and recall visits



PL4

EM-DS-030

Left-curved instrument with small ball (> 0.6-mm diameter) on instrument tip for the periodontal debridement of furcations and concavities



PL5

EM-DS-034

Same as PL4 instrument with right curve

Implant Maintenance



PI - Starter Kit

EM-FS-295
4 PI instruments, 1 file holder (120°) and 1 flat wrench



PI - Refill

EM-DT-065A
4 PI instruments

EMS Endodontic Tips



RT1

EM-DS-066A
Diamond-tipped instrument for locating canals and removing calcifications in the coronal third of the root canal system



RT2

EM-DS-067A
Diamond-tipped instrument for removing ledges. Creates straight canal for easy viewing of broken instruments



D

EM-DS-005A
For loosening crowns, bridges and pins placed previously with phosphate cement



H

EM-DS-004A
For the lateral thermal condensation of gutta-percha



Flat Wrench

EM-DT-018
To change instruments for all three file holders



180° File Holder

EM-DS-069A
For use with RT3, Berutti and RE2 instruments

EMS Endodontic Tips



120° File Holder

EM-DS-001A
For the flexibility to use different endo files, specially suited for anterior and premolar areas. Also suitable for RE2 and Berutti instruments



90° File Holder

EM-DS-012A
For the flexibility to use different endo files, specially suited for the molar area



RT3

EM-DT-062
Very long and fine instrument for the removal of broken instrument tips. Use with 180° file holder (5 pack)



RE2

EM-DT-061
Instrument for retrograde root canal isthmus preparation. The surface is coated with nonabrasive titanium nitride. Use with 120° or 180° file holders (5 pack)



Berruti Instrument

EM-DT-060
Diamond-tipped instrument for the retrograde preparation of root canals. A tapered design allows minimally invasive access and therefore fewer postoperative complications. Use with 120° or 180° file holders (5 pack)



ESI - Starter Kit

EM-FS-279
Non-cutting NiTi instrument for the effective cleaning and irrigation of the root canal system (6 files)



ESI - Refill

EM-DT-069A
Non-cutting NiTi instrument for the effective cleaning and irrigation of the root canal system (6 files)



Endo K-Type File Set

EM-DT-011
The root canal system (Use files in 90° or 120° file holders) K-Files for cleaning and disinfecting

Endo K-Type Files

ISO 15 White: EM-DT-006
ISO 20 Yellow: EM-DT-007
ISO 25 Red: EM-DT-008
ISO 30 Blue: EM-DT-009
ISO 35 Green: EM-DT-010





**PRICES
REDUCED!**

AIR-N-GO easy

Convertible AIR-N-GO easy handpiece, a SUPRA nozzle, 1 intro kit of 20g bags of «CLASSIC» and «PEARL» powders, 1 maintenance kit (replacement o' rings, syringe of silicone grease with brushes, cannula, cleaning drill).

AIR-N-GO® easy with W&H adapter	SA-F10102
AIR-N-GO® easy with KaVo adapter	SA-F10100
AIR-N-GO® easy with Sirona adapter	SA-F10101
AIR-N-GO® easy with Bien-Air adapter	SA-F10103
AIR-N-GO® easy with Midwest adapter	SA-F10105

AIR-N-GO easy Perio Kit

Includes:

- Perio tank
- Perio nozzle
- Perio powder bottle



SA-F10120

AIR-N-GO easy Powders (4 bottles x 250g)

- Classic Powder – Neutral (SA-F10254)
- Classic Powder – Natural Cola (SA-F10253)
- Classic Powder – Natural Raspberry (SA-F1022)
- Classic Powder – Peppermint Essential Oil (SA-F10250)
- Classic Powder – Lemon Essential Oil (SA-F10251)
- Perio Powder – Neutral (3 bottles x 160g) (SA-F10270)



**PROPHY
HANDPIECES
ON P.30 OF
EQUIPMENT
SECTION**