



# presidential 2021 Q2 Specials

April - June 2021

**ORDER  
NOW, PAY  
LATER!\***

**Instant asset  
write-off up  
to \$150K!**

**Government  
stimulus loans  
of up to \$250K  
with delayed  
payments**



**presidential**  
dental | medical | veterinary



**Luke Williams**  
0421 493 876  
NSW/ACT



**James Wallace**  
0427 758 650  
Greater Sydney

# STIMULUS Instant Asset-Writeoff threshold increased from \$30,000 to \$150,000!

**DEADLINE NOW EXTENDED**

**The government is increasing the instant asset write-off threshold from \$30,000 to \$150,000, it is also expanding access to the scheme to include businesses with aggregated annual turnover of less than \$500 million (up from \$50 million).**

This scheme is only available for the remainder of the financial year, which means it covers any assets purchased before 30 June.

The threshold applies on a per-asset basis, meaning businesses can write off multiple assets. It also applies to both new and used assets, so long as the assets have been purchased in the current financial year.

The government said in the 2017-18 financial year, more than 360,000 businesses used the instant asset write-off, claiming deductions valued at more than \$4bn.

For more information, see the fact sheet from the Treasury, as well as the Treasury website.



## Government Stimulus Offers

### SME Guarantee Scheme

Under a new SME coronavirus guarantee scheme, the government has pledged to guarantee 50% of new short-term, unsecured loans to small and medium businesses.

The government will guarantee up to \$40 billion in new lending, in a bid to further encourage new credit to SMEs.

In addition, for lenders providing credit to existing SME customers, the government is providing a temporary exemption from responsible lending obligations, meaning small business owners could access cash more quickly and efficiently.

### Pause on small business loan repayments

There is also relief for small businesses already repaying loans. On Friday, the Australian Banking Association announced Aussie banks are pressing pause on repayments for small business loans.

This is expected to apply to more than \$100 billion in existing loans, and could return up to \$8 billion to Australian businesses.

**Presidential urges clinic owners to please ensure you are making the most of the incentives and funds relief available to small businesses during this challenging period. Please also discuss what is applicable in your particular situation, with your accountant or financial advisor.**

## Bio Hygiene - Free Trial!



Free Trial

**Bevisto Cryl 5L - Dental Chair Cleaner**

**\$49.50** (while stocks last)

**20% OFF**

## Helix Tests



**20% OFF**

Per 250 strips

Save \$48.00!

**\$190** (while stocks last)

## A-dec ICX Water Bottle Tablets



**20% OFF**

0.7L (box of 50 tablets)

Save \$17.70!

**\$70.80**

2.0L (box of 50 tablets)

Save \$26.40!

**\$105.60**

(while stocks last)

## Riskontrol Disposable Syringe Tips



Your choice of flavours – Mandarin or Mint

**20% OFF**

**\$64.10** Save \$36 per box of 250 (while stocks last)

## A-dec Triplex Tips



**20% OFF**

23-0872-01  
Pack of 5

**\$72.40**  
SAVE \$18.10!

23-0872-02  
Pack of 25

**\$311.20**  
SAVE \$77.80!

## A-dec 2L Water Bottle



Receive a **FREE** box of ICX tablets!



## Durr Wipes



Save 30% on Cannula Pack when purchasing a cannister of Durr Wipes

## Clearview RA Masks



- 5 flavours
- Large Adult, Adult & Paediatric sizes

**SPECIAL PRICING!**

**\$108.90 EA** (while stocks last)

## Durr Suction Cannulas



**20% OFF**

**Satelec Newtron Scaler Handpiece**



**10% OFF**

Download our Consumables Catalogue, and email your consumables shopping list to [orders@presidental.com.au](mailto:orders@presidental.com.au)



## THE NEW A-dec 500!

- Sewn Upholstery – CYAN colour
- Continental delivery with standard size tray & holder
- Assistant suction
- Cuspidor with support centre
- Dual hub with chair-mounted Radius-LED light
- Electric motor and Satelec Newtron scaler
- Monitor mount + Neovo 22 inch monitor
- Radius style 572L LED light
- 521+522 stools
- Advanced Air system + advanced air coupling
- RK-97L handpiece
- USB powered hub



**SAVE**  
**\$21,250**

RRP \$85,002  
SPECIAL PRICE:

**\$63,752**

*\*Image for illustration purposes only*

## A-dec 400

- Sewn Upholstery (CYAN colour)
- Lever Headrest
- 332/4/VER.B Radius Style Traditional Delivery System including tray
- Fibre-optics and Deluxe Touchpad
- Electric Motor
- EMS No Pain Scaler
- 551 Assistant Suction and Instrumentation
- Cuspidor
- Chair mounted LED Light
- 400 Series Stools
- 381 Monitor Mount
- Neovo Medical Grade Monitor 22" screen



**SAVE**  
**\$16,525**

RRP \$62,187.50  
SPECIAL PRICE:

**\$45,662**

*\*Image for illustration purposes only*

## A-dec 300 Radius

- Formed/Seamless Upholstery (DRIFTWOOD colour)
- Radius Style Traditional Delivery System with 3-position block, including tray
- Deluxe touchpad
- Electric Motor
- EMS Scaler Built-In Kit
- Assistant Suction and Instrumentation
- Cuspidor and Support Centre



**SAVE**  
**\$14,264**

RRP \$42,919  
SPECIAL PRICE:

**\$28,655**

*\*Image for illustration purposes only*

## THE NEW A-dec 500!

- **Stock Special – A-dec 500 with \$13,000 of bonus LISA credit!**
- Seamless/Formed Upholstery (SKY BLUE colour)
- Traditional delivery with standard size tray & holder
- Assistant suction
- Cuspidor with support centre
- Dual hub with chair-mounted Radius-LED light
- Electric Motor and Satelec Newtron Scaler
- Soprolife intra-oral camera and chair mounted dock
- Advanced Air System + RK-97L handpiece
- Radius style 572L LED light
- LISA VA Class B 22L steriliser
- 521+522 stools
- USB powered hub
- Monitor mount



**SAVE**  
**\$31,075**

RRP \$109,231  
SPECIAL PRICE:

**\$78,155**

*\*Image for illustration purposes only*

**ASK US ABOUT  
ADDITIONAL  
SHOWROOM  
EQUIPMENT OFFERS  
- MASSIVE SAVINGS  
ON OFFER!**

**PLEASE CALL 1800 773 743**  
TO BOOK YOUR SHOWROOM APPOINTMENT  
AT THE NEWCASTLE OR SYDNEY FACILITIES

## PSPIX2

### THE FIRST PERSONAL DENTAL IMAGING PLATE SCANNER

ACTEON® presents the PSPIX2®, the first dental imaging plate scanner for your personal convenience. With its revolutionary size, design and user-friendliness, the PSPIX2® is so impressive and appealing that all dentists will want to buy one.



**SAVE**  
**\$2,339**

RRP \$11,695  
SPECIAL PRICE:

**\$9,356**

*\*Image for illustration purposes only*

## Acteon TRIUM True Low Dose CBCT with CEPH Arm

### 3D IMAGING SYSTEM

- Smallest voxel size – clearest image definition
- Pulsed exposure – lowest dosage of exposure
- Patented Ceph collimation – smallest footprint on the market
- Wide range of F.O.V. – minimizing radiation and exposure
- 2D upgradable model to 3D and CEPH models
- Implant library feature to assist with implant planning
- Automated implant reporting tool



**SAVE**  
**\$28,775**

RRP \$197,775  
SPECIAL PRICE:

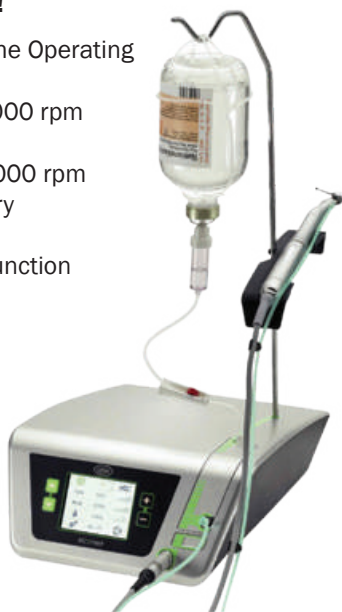
**\$109,000**

*\*Image for illustration purposes only*

## W&H Elcomed Surgical Console

### DOCTOR'S NO.1 CHOICE FOR THE OPERATING THEATRE!

- Doctor's No.1 choice for the Operating Theatre!
- Shortest and lightest 50,000 rpm motor on the market
- Motor speed of 300 - 50,000 rpm
- Up to 80 Ncm on the rotary instrument
- Automatic thread cutter function



**SAVE**  
**\$1,785**

RRP \$8,925  
SPECIAL PRICE:

**\$7,140**

## MelaTherm 10 - final stock demo stock

### MELAG MELATHERM 10:

- Integrated documentation
- Active drying
- Integrated dosage module and process agents
- Practice-optimised chamber
- Systematic treatment



**SAVE**  
**\$11,397**

RRP \$618,995  
SPECIAL PRICE:

**\$7,598**

*\*Image for illustration purposes only*

**PLEASE CALL 1800 773 743**  
TO BOOK YOUR SHOWROOM APPOINTMENT  
AT THE NEWCASTLE OR SYDNEY FACILITIES

**ASK US ABOUT  
ADDITIONAL  
SHOWROOM  
EQUIPMENT OFFERS  
- MASSIVE SAVINGS  
ON OFFER!**

# Which solution is right for you?

**NEW A-dec 500**  
A legend redefined

Free NLZ Electric Motor Kit

**A-dec 400**  
Accessible. Strong. Style

Free NLZ Electric Motor Kit

**SAVE \$4,584!**

**A-dec 300**  
Smart. Sensible. Simple

Free NLZ Electric Motor Kit

**A-dec 200**  
Strong. Durable. Accessible

## A-DEC STOOLS SPECIAL

**400 series stools \$2,750**  
when ordering a qualifying chair package





**500 series stools \$3,750**  
when ordering a qualifying chair package

**12.5% OFF**  
SATELEC BUILT-IN  
SCALER KITS!

**25% OFF**  
SOPRO  
CAMERAS!

**25% OFF**  
SOPRO  
INTRA-ORAL  
CAMERAS &  
A FREE DOCK!

Conditions: <sup>1</sup>Chair package must include Chair, upholstery, delivery system, assistant's delivery, light, electric motor, scaler & stools package. <sup>2</sup>A-dec 300\* - FREE 617 or 717 camera + dock; A-dec 400\* - FREE 617, 717, SoprolIFE or SoprocARE camera + dock; A-dec 500\* - FREE 617, 717, SoprolIFE or SoprocARE camera + dock. <sup>3</sup>All offers in this brochure available until 31 December 2020. <sup>4</sup>Chair package images are for illustration purposes only. <sup>5</sup>Finance offers available from participating A-dec dealers and end 30th June 2020. <sup>6</sup>All FREE products values are calculated at RRP including GST. <sup>7</sup>FREE product offers cannot be used in conjunction with any other offer.

# A-dec 200

Proven • Efficient • Smooth

## \$24,990

**SAVE \$2,975**

### Package Includes:

- Chair with Seamless upholstery
- Support centre with cuspidor
- Delivery System with integrated deluxe touchpad
- Assistants instrumentation and touchpad
- NEW 300 LED light

**A-dec 200 is a great value package, complete with new features for added accessibility and comfort.**

**All from the people who build the most dependable dental equipment in the world, A-dec.**





# Lisa Traceability Package

**Buy 1 Lisa sterilizer  
and get for free:**

1 LisaSafe connection kit  
and 1 label printer

### Lisa 17 & Lisa 22

- › Chamber size 17 l or 22 l
- › High efficiency with patented Eco Dry + technology for reduction of cycle time (30 minutes for average load of 2 kg)
- › Rapid cycle for handpieces
- › Programmable cycle start
- › Automatic water-filling valve

### Lisa 17 Package

■ Bonus Value 1,760.-

**\$ 14,990.-**

**Promo\_LISA17Print**

### Lisa 22 Package

■ Bonus Value 1,760.-

**\$ 15,990.-**

**Promo\_LISA22Print**



### EliSense

Cycle status information, temperature information and all information to optimize both workflow and output at a glance.

### EliTrace

With EliTrace you will not only know exactly which cycles have been carried out at what time and date, but also which instruments were sterilized within this cycle.

### W&H Steri App

W&H Steri App is an advanced smartphone and tablet application that allows to control and monitor the status of the autoclaves in your dental clinic. Moreover, the app is able to scan and track dental instruments.



lisa







# Synea Vision/Fusion Handpiece Package

Buy 2x turbines from our Synea Fusion or Vision range and receive a third handpiece of your choice for free

### Synea Fusion Turbine

- › Largest illumination field with LED+
- › Hygienic head system
- › Best visibility due to small head sizes
- › Optimal price-performance ratio

### Synea Vision Turbine

- › 100% shadowless illumination with Ring LED
- › Hygienic head system
- › Scratch-resistant surface
- › Optimum service life



Synea Fusion Package

**SAVE up to 1,692.-**

**Promo\_FUSION**

Synea Vision Package

**SAVE up to 2,342.-**

**Promo\_VISION**

synea





## Implantmed Plus Special Packages

### The Implantmed Sets consists of:

- › Control Unit
- › Mains Cable
- › Motor Support
- › Stand
- › Disposable Irrigation Tubing Set

### Set 3 Special consists of:

- › Foot Control - Cabled
- › Motor with 1,8 m Cable and Clips (without Light)
- › **BONUS:** S-11 or WS-75 Surgical contra-angle 20:1 and Set of disposable spray tubes, 1.8m cable

**\$ 6,018.00**

Value \$ 1,988.00

**PROMOSET3-WS75** or **PROMOSET3-S11**

## Osstell Beacon Package

### **BONUS** 4x boxes SmartPeg

- › 2 boxes are included
- › 2 boxes via online Osstell connect redemption

Bonus Value \$ 1,020.00

**\$ 3,995.00**

**BEACONPROMO04**



### Set 5 Special consists of:

- › Foot Control - Cabled
- › Motor with 1,8 m Cable and Clips with LED Light
- › **BONUS:** S-11 L or WS-75 L surgical contra-angle 20:1 and Set of disposable spray tubes, 1.8m cable

**\$ 7,293.00**

Value \$ 2,141.00

**PROMOSET5-WS75** or **PROMOSET5-S11**

### Set 6 Special consists of:

- › Foot Control - Wireless
- › Motor with 1,8 m Cable and Clips with LED Light
- › **BONUS:** S-11 L or WS-75 L surgical contra-angle 20:1 and Set of disposable spray tubes, 1.8m cable

**\$ 8,058.00**

Value \$ 2,141.00

**PROMOSET6-WS75** or **PROMOSET6-S11**



implantmed PLUS



# Digital Imaging Solutions



## X MIND unity

- Integrates digital sensors
- Easy installation
- Proven reliability
- Dosage tracking



## X MIND DC

SHORTER EXPOSURE TIME  
WITH X-MIND DC GENERATOR



**25% off  
SOPIX  
Sensors**



**12.5% off  
Built-In  
Satelec  
Scaler Kits**



**FREE  
IMAGING  
SOFTWARE  
AND  
DOCK**

### Cameras

SOPRUCARE

SOPRULIFE

SOPR717

SOPR617

**25%  
OFF**



# Talk to your patients with better images

**BONUS**  
USB dock &  
20% off cameras!  
SAVE UP TO  
**\$5,148!**



## SOPRO LIFE

- Document cases with fluorescence
- Caries detection
- Highlights healthy enamel and demineralised enamel

## SOPRO CARE

- Increase patient acceptance
- Detects caries and periodontal disease
- Shows plaque

## SOPRO 717

- Increase profitability
- 115x zoom
- 3 magnification settings
- White light operation

## SOPRO 617

- Auto focus
- Entry level
- Easy operation
- Great value

**Call for free demo today!**

All cameras integrate with most practice management software





# Innovative imaging

**BONUS!**  
FREE Box of Hygiene Bags & Covers OR Size 4 kit AND Cleaning Plate!

## PSPIX<sup>2</sup>

is so intuitive that it has never been so easy to scan an image

### COMPACT SIZE

Created with cutting edge technology and design, the PSPIX<sup>2</sup> is the smallest and most compact PSP scanner on the market.

### SO SIMPLE TO USE

The large colour touchscreen provides intuitive indications for quick and easy use.

### SUPERIOR IMAGES

Accurate images and striking contrast to ensure reliable diagnosis

### EFFICIENCY

Click and Scan and begin your treatment within 12 seconds. PSPIX can be shared up to 10 workstations

**\$11,695**

SAVE \$3,151



### FLEXIBILITY

Thinner and more flexible, the PSPIX<sup>2</sup> imaging plates are easy to use and provide outstanding patient comfort.

22 x 35mm



Size 0  
Child

24 x 40mm



Size 1  
Child Adult  
Periapical

31 x 41mm



Size 2  
Adult Bitewing  
Periapical

69 x 54mm



Size 4  
Occlusal (Equivalent to  
3 size 3 plates)

## 1. Identify

From your initial treatment plan with an OPG Captured by X-Mind Trium



## 2. Diagnosis

Fluorescence technology in Sopro cameras for better patient communication, case acceptance and added diagnostic value.



# X-Mind™ Trium!

Premium quality imaging at an affordable price!



## Reasons to choose X-Mind™ Trium

The smallest footprint on the market with the CEPH

- 4 F.O.V. (Field of view)



40x40mm



60x60mm

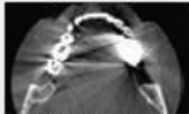


80x80mm

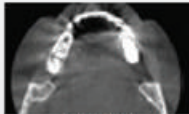


110x80mm

- **360° degree rotation** from 18 to 37 seconds depending on the selected field of view
- **An artefacts reduction filter (STAR)** for easy tissue distinction (bone/tooth/metal)



Without STAR



With STAR

- Option to upgrade to 3D

ACTEON  
imaging suite



Quality images via an interface that is simple, quick and intuitive

- **Easy to mark landmarks** on mandible, maxilla and angulation of the teeth
- **Able to import images** to third party software

2D upgradable promo:

Receive a FREE Acquisition PC & 1 FREE additional 1-year warranty!



Book a demo at the showroom on 1800 773 743



### Cephalometric radiology



Lateral full skull

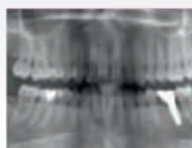


Posterior/Anterior

- Due to its patented cinematic and collimation, patient positioning is easier on X-Mind® Trium.
- Install the cephalometric arm on the right or left, depending on the configuration of the office.



### Panoramic radiology



Panoramic with improved orthogonality



Maxillary

Whether raw or filtered to optimise the details, panoramic X-Mind Trium images support a fast and easy diagnosis.

- **CLEAREST 3D IMAGES ON THE MARKET**
- **LOWEST RADIATION EXPOSURES**
- **EASY TO USE**
- **SMALLEST FOOTPRINT**
- **NO LICENSING FEES!**
- **RELIABLE AFTER-SALES SUPPORT**

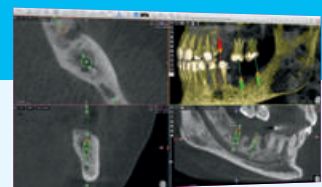
## 3. Treatment Plan

Start your treatment with HD Sopix Sensors and X-Mind Unity x-ray generators. PSPIX2 – The most versatile and fastest scanner producing digital radiographs in seconds



## 4. Integrate

Complex cases need a 3D perspective. X-Mind Trium delivers 75µm resolution images for the most predictable outcome.



# X-Mind™ Prime - OPG/CONE BEAM

## REALIZE A COMPLETE OVERVIEW OF THE MOUTH

PROVIDE A GLOBAL CHECK-UP WITH HIGH-QUALITY PANORAMIC IMAGES



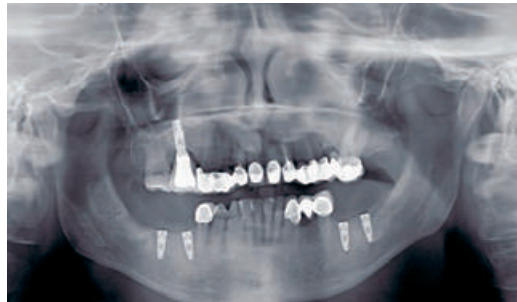
*Interproximal carries on 21 and 22. Endodontic treatment and apical lesion on 47.*



*Wisdom teeth positioning.*

With X-mind Prime, benefit from:

- Accurate panoramic examinations
- Improved communication with your patients
- Minimum time for examinations preparation
- Sharp image at first view



*Verify the implant positioning right after the surgery.*



*Check the endodontic treatment performed on the 47.*

• **EASY TO INSTALL**  
 • **SIMPLE TO USE**  
 • **GREAT RETURN ON INVESTMENT**

**FREE**  
**additional**  
**2-years**  
**warranty!**



FOLLOW-UP YOUR TREATMENT AND EFFICIENTLY COMMUNICATE WITH YOUR PATIENT



**PRIME NOW**  
**AVAILABLE**  
**WITH CEPH**  
**ARM!**

# MINIMALLY INVASIVE PLANNING



## X MIND prime

### It's Time For Efficient 3D Diagnosis

- 3D diagnosis is more accessible than ever with a smart and compact solution
- Zero footprint space with the innovative wall mounted system
- Face- to- face patient positioning
- Unmatched quality (48 micron pixel size)
- Includes: workstation pc and monitor, wall switch, light.
- Mac and windows compatible with ais software
- 1 Minute to edit your implant report with the intuitive AIS software
- Multiple fov fulldentition (85 x93mm)-single jaw (85 x 50mm)-manibular teeth (50 x 50mm)- maxillary teeth (50 x50mm) tmj (85 x93mm)-sinus (85 x 93mm)
- Acteon will provide 5 pro licenses with each prime 3d.



Suggested  
Promo Price  
**\$74,844\***

Suggested  
Promo Price  
**\$28,690\***

**Purchase** X-MIND Prime 3D CBCT\* (XMP 3D wall mount +WS + Monitor W120005 or XMP 3D Column Mount +WS + Monitor W120007)

**Receive** 12x10 FOV upgrade PLUS

**GET initial 2 year warranty + 2 additional years warranty at NO CHARGE**

## X MIND prime 2D

### It's Time For Smart Panoramic X-Rays.

X-Mind prime 2D is the latest addition to ACTEON's panoramic imaging product line. It blends cutting-edge technology with ease of use in a compact design. With X-Mind prime 2D, high tech is at your fingertips with tools for accurate diagnosis.

- X-Mind prime 2D is a lightweight and compact system that can fit into virtually any dental office. With its intelligent, wall-mounted design, the unit takes up zero floor space. Because the unit is delivered preassembled to the office, it can be installed by a single technician in under an hour, so it is up and running and does not interfere with office production.
- 2D diagnosis is more accessible than ever with a smart and compact solution

**Purchase** 1 x X-Mind Prime 2D

**GET initial 2 year warranty + 2 additional years warranty NO CHARGE**





# Finally! A TRUE LOW DOSE 3D CBCT imaging system

## IT'S TIME FOR TRUE LOW DOSE CBCT

TRUE LOW DOSE is the latest X-MIND® trium CBCT innovation from ACTEON, with up to 50% less radiation exposure and no loss of image quality and accuracy.

- **A FULL 360° ROTATION WITHOUT STITCHING**  
A superior image acquisition achieved with a full 360° rotation
- **FINEST IMAGE PRECISION OF 75 MICROMETERS (µm)**  
ENABLES 0.1mm SLICE THICKNESS – Voxel size is key for greater detail
- **4 Selectable FOVs:** 40 x 40mm, 60 x 60mm, 80 x 80mm & 110 x 80mm to select the scanning area for examination and to minimise radiation exposure to patients
- **An Optimal filter for reading metal artefacts** - X-Mind Trium is equipped with dynamic artefact reduction filter to eliminate streaks and dark bands caused by the presence of metal
- Windows and Mac compatible
- Acteon will provide 5 PRO licenses with each Trium 3D
- The smallest footprint with CEPH (Patented)
- **5 year Warranty on Parts**

TRUE  
LOW DOSE

# X-MIND trium 3 SOLUTIONS IN 1

- X-Mind® trium has an extensive range of options. It is upgradable on site.
- X-Mind® trium will adapt to the ever-increasing needs of your clinic by adding 3D imaging or digital® cephalometric modalities when you decide it is necessary.



	X-Mind® trium Pan	X-Mind® trium Pan 3D	X-Mind® trium Pan Ceph	X-Mind® trium Pan Ceph 3D
Pan	●	●	●	●
3D	○	●	○	●
Ceph	○	○	●	●

○ : available option

## X-Mind Trium 2D Offer:

**Purchase** any Upgradable 2D X-Mind Trium  
**Receive** an Acquisition PC FREE *plus*  
**additional 2-Year Warranty (total of 5+2= 7 years Warranty!)**

(Excludes 2D X-MIND Trium's that cannot be upgraded. Acquisition PC includes manufacturer warranty only (monitor not included).

## X-Mind TRIUM 3D / 3D True Low Dose, 3D TLD with CEPH Offer:

**Purchase** any 3D cersion of X-MIND Trium / Trium TLD or  
 a 3D upgrade\*  
**Receive** FREE Piezotome CUBE (LED)  
**plus additional 2 year Warranty at no charge!!**

**“Honestly, it’s a great machine. The images are nice and sharp and I haven’t had any issues with it. I can export the images to my practice management software to attach to patient records with no noticeable loss of quality.”**



**Dr Anthony Hopkins, Oasis Orthodontics Clarkson W.A.**

## Superior osseous surgery for immediate implant placement

# PIEZOTOME

CUBE

- Immediate implant placement.
- Decreased Pain & Swelling Post-Op
- Socket Preservation
- More Predictable
- Save more Buccal Bone
- Less Truma
- Less Bleeding



**For a FREE TRIAL please contact ACTEON ANZ 1300 228 366!**

**BUY** 1 x PIEZOTOME® CUBE (F50102),  
**GET** Get Extraction II Tip Kit or Universal Kit **FREE!**



## IMPLANT CENTER 2

### The alliance of technologies for safe and atraumatic bone

The alliance of the most advanced ultrasonic and rotary technologies ensures total independence in increasingly diverse clinical areas like:

- periodontics,
- endodontics,
- prophylaxis,
- restorative,
- pre-implant,
- implant surgeries.

Innovative, broad and robust surgical and non- surgical tips range.

\*\*Delivered with a progressive footswitch, 2 brackets, 2 handpiece holders, 2 sterilisable irrigation lines and 30 perforators. This reference does not include Piezotome LED handpiece and tips.



**BUY**  
 1 x Implant Center II® (F27203)  
**GET**  
 1 x Piezotome LED Handpiece & Cord (F12815) **FREE!**

**BUY**  
 1 x Servotome unit  
**GET**  
 Get 4x Electrodes **FREE!**

NEWTRON  
BOOSTER



**BUY** 1 x Newtron  
Booster (Ref: F60203),  
**GET**  
2 x Newtron Tips  
**FREE**

NEWTRON  
P5 B.LED



**BUY** 1 x Newtron  
P5 B.LED (Ref: F61105),  
**GET**  
2 x Newtron Tips  
**FREE**

NEWTRON  
P5XS B.LED



**BUY** 1 x Newtron  
P5XS B.LED (Ref: F62105),  
**GET**  
2 x Newtron Tips  
**FREE**

**BUY** 1x Benchtop Newtron unit **GET** Get 2x Newtron Tips FREE

NEWTRON® Tips - superior ultrasonics for all your procedures



PROPHYLAXIS



PERIODONTICS



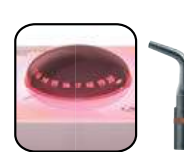
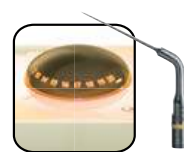
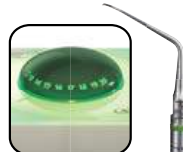
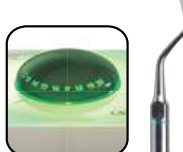
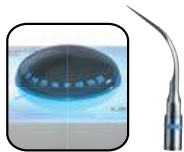
IMPLANT CARE



ENDODONTICS



PROSTHESIS  
& ESTHETICS



**BUY** 2 x Newtron tips **GET** 1 x FREE Box (5) Expasyl Exact

**BUY** 4 x Newtron tips **GET** 1 x FREE

**10% OFF  
CURING  
LIGHTS!**

## Mini LED Supercharged

### The most powerful curing LED & the widest spectrum

- High power: 3 seconds curing light
- Wide spectrum: cure all composites
- Hygiene: no cross contamination
- Safety - no risk of pulpal damage
- Fast mode, pulse mode and ramping modes
- Luminous screen with custom modes and times
- Base charger includes a radiometer

**MINILED**  
— SUPERCHARGED



**Control**  
Base-charger includes a radiometer. The LED light intensity can be controlled anytime with total lightening of the translucent handpiece holder



**Get  
5.5mm  
Light Guide  
FREE**

**\$2,123**

SA-F05214

## Mini LED Ortho II

**MINILED**  
— ORTHO 2



- Customisable exposure times (for bracket-to-bracket, or full arch)
- Cure any type of orthodontic material efficiently and quickly
- Long-lasting battery – can cure 15 patients at maximum power, no need to recharge during the day
- Customisable alerts (beep, micro-flash, mixed or no alert)

**Get  
7.5mm  
Light Guide  
FREE**

**\$2,127**

SA-F05220

## Mini LED Standard Curing Light

**MINILED**  
— STANDARD

- Emits light in the most efficient part of the spectrum
- Only 6 to 12 seconds to polymerize 2mm of any composite
- Choice of three modes for optimal curing of all types of composite
- Fast mode, Pulse mode and Ramping mode.



**Get  
0.5mm  
Light Guide  
FREE**

**\$1,414**

SA-F02621



ORIGINAL  
EXPASYL™  
FORMULA

ONE CAPSULE  
= ONE PATIENT  
Up to 3 teeth

COST  
EFFECTIVE  
No wasted material

ASTRINGENT  
EFFECT

FULL  
PROCEDURE  
WITHIN  
3 MIN

NO RISK  
OF LESION TO  
THE EPITHELIAL  
ATTACHMENT

NO ANESTHESIA  
REQUIRED  
no bleeding, no recession,  
no pain

**Buy** 20x Expasyl Capsules pack  
**Get** 1x 5 pack of Expasyl Exact FREE

**Buy** 1x Expasyl Mini Kit  
**Get** 1x 5 pack of Expasyl Exact FREE

BETTER  
AESTHETIC  
RESULTS



PUREREFLECT  
SEE THE TRUE IMAGE

PURE REFLECT®  
TECHNOLOGY  
an exclusivity of ACTEON PRODONT-HOLLIGER

Inspired by the  
aerospace industry

No double image (front surface)



RHODIUM  
a greyish reflection

TITANIUM  
a blueish reflection

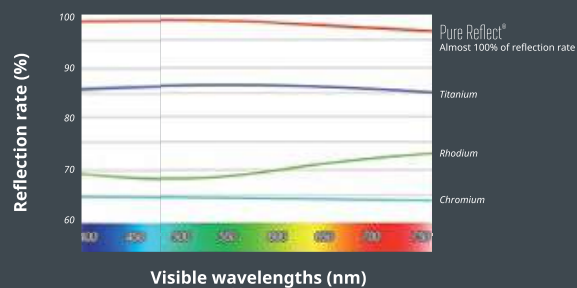


Very luminous



No color and shape distortion  
Accurate and sharp image

The authentic color reflection



Visible wavelengths (nm)

\*source: CNRS laboratory - France 12/2013

**BUY** 4 Boxes Rhodium Mouth Mirrors  
**GET** 1 x **FREE** (Mix N Match Ok)

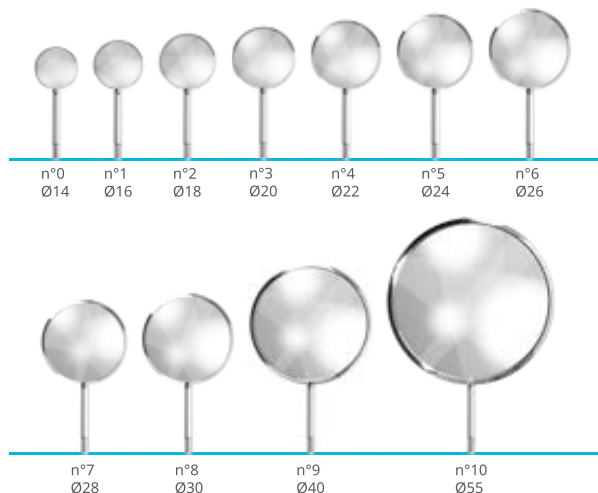
**BUY** 4 Boxes Titanium Mouth Mirrors  
**GET** 1 x **FREE** (Mix N Match Ok)

**BUY** 3 x Photographic Mirrors  
**GET** 1 x Rotating Holder **FREE**

MOUTH MIRRORS

From diagnostic to treatment,  
the benefit to all dental clinical acts

Visual examination is the first step to diagnostics  
Deserve the true color reflection for an  
optimal performance



PURE REFLECT®



Competitor



1

**BUY** 4 Boxes Pure Reflect Mouth Mirrors Size 0, 1, 2, or 3  
**GET** 1 x **FREE** (Mix N Match Ok)

**BUY** 4 Boxes Pure Reflect Mouth Mirrors Size 4 or 5  
**GET** 1 x **FREE** (Mix N Match Ok)

**BUY** 3x Pure Reflect Photographic Mirrors  
**GET** 1 x Sterilisation Tray **FREE**



# Ris|Kontrol<sup>®</sup> air/water dental syringe

- **Flexible:** More flexible tips and very easy to bend with no shape-memory; keeping the ideal curve
- **Dry Air:** Two separate tubes guide air and water from the syringe to the end of the tip, ensuring totally dry air.
- **Ecological:** Tips made from entirely recyclable food-quality plastic Environmentally-friendly – pollution free in the case of combustion
- **Safe:** Protection for the patient, the practitioner and assistants. Reduced risk of direct or cross-contamination. No risk of ingestion: safety locking device
- **Universal:** Adec, Planmeca, DCI, Kavo, Sirona, Belmont, Morita S12
- **Variety of flavours,** Classic White (no scent), Classic Blue (no scent), White - Mint, Mandarin - Orange, Black - Liquorice, Green - Aniseed, Purple - Blackcurrant



**BUY 4 x Boxes Riskontrol tips GET 1 x Box FREE**



# SOFTLY AMALGAMATOR



## Universal mixer for predosed capsules

- High mixing frequency
- Noiseless operation
- Excellent stability
- All-electric safety mechanism
- Ergonomic design
- Maintenance-free
- Easy to clean

**SPECIAL INTRODUCTORY PRICE**  
**\$599 (SAVE \$169!)**

\*while stocks last! Product Code: 6.0100114

**BUY 1 Softly Amalgamator GET 1 x FREE Box of Mouth Mirrors (Size 4 or 5)**

**air N GO**  
*easy*



**ACTEON® EQUIPMENT has created the new generation of portable air polishers, AIR-N-GO® easy with dual functions:**

- "SUPRA function" for supra-gingival polishing: daily prophylactic polishing.
- "PERIO function" for sub-gingival polishing: maintenance, periodontal and peri-implant treatments.

This medical device allies simplicity with performance.

**A SINGLE HANDPIECE TO COVER A RANGE OF CARE AND TREATMENTS**

AIR-N-GO® easy combines essential functions with reliability to facilitate your everyday life:

- Fast start-up: direct connection to the high speed handpiece connector.
- Greater freedom of movement: 360° rotation, fast and accurate treatment of areas requiring care.
- Easier Cleaning of the handpiece: main parts can be dismantled

**BUY 1 Air-N-GO™ Easy**

**GET Get 4 x 250g of Air-N-Go™ Powder FREE!**



# Surgic Pro+

ORAL SURGERY  
MICROMOTOR

POWERFUL  
UP TO 80Ncm

**PLUS  
3 FREE  
Accessories**



POWER • SAFETY • ACCURACY

## Surgic Pro+

MODEL	ORDER CODE	RRP PRICE
Surgic Pro Optic	Y1001933	<b>\$8,079</b>

**INCLUDES**

- Implant handpiece **TiMax X-SG20L**
- Micromotor **SGL70M**

**SAVE  
\$2,325**



**FREE  
Travel Case**

ORDER CODE Y1001952  
RRP-\$792



**FREE  
Sterilisation  
Cassette**

MODEL **SG-CASE**  
ORDER CODE Z313101  
RRP-\$584



**FREE  
Irrigation Tube**

BOX OF 50  
ORDER CODE Y900113  
RRP-\$1,039

## Surgical Micromotor & Cable

**FREE  
Sterilisation  
Cassette**



Optic	ORDER CODE	RRP PRICE
SGL70M (with 2m Cord)	E1023001	<b>\$4,133</b>
SGL70M 3.5m (with 3.5m Cord)	E1023002	<b>\$4,498</b>
SG-CASE	Z313101	<b>FREE</b> RRP-\$584

Non-Optic	ORDER CODE	RRP PRICE
SG70M (with 2m Cord)	E1025001	<b>\$3,285</b>
SG70M 3.5m (with 3.5m Cord)	E1025002	<b>\$3,650</b>
SG-CASE	Z313101	<b>FREE</b> RRP-\$584

## iCart Duo

The NSK iCart Duo allows you to install both the NSK SurgicPro and Variosurg Systems as well as additional accessories on to the one easily transportable cart.

MODEL	ORDER CODE	PROMO PRICE
iCart Duo	S9090	<b>\$1,530</b> RRP-\$1,700

**Specifications**

- Dimensions : H101.65 cm
- Weight : 16.5 kg
- Adjustable Height
- Lockable Wheels

**10%  
OFF**



"As my business grows NSK has always supported my practice."



My Surgic Pro is consistently reliable, created with precision, and a pleasure to work with.

It is the workhorse of my practice and I couldn't live without it!"

**Dr Cecilia So** BDS Hons (USyd), MFDS (Lond), Grad Dip Clinical Dentistry (Oral Implants)(USyd), FICD, Clinical Associate Lecturer (Oral Implants) (USyd)

# Osseo 100 + Five FREE MultiTegs

## OSSEOINTEGRATION MONITORING DEVICE

MODEL	ORDER CODE	RRP PRICE
Osseo 100	Y1004175	<b>\$3,025</b>

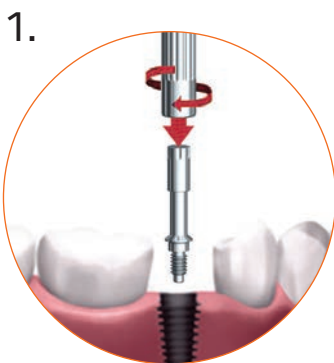


**SAVE  
\$300**

NSK's Osseo 100 measures implant stability and osseointegration to enhance decisions about when to load the implant. This is especially important when using protocols with shorter treatment time and treating higher risk patients.

The uncomplicated operation that measures ISQ, allows the implant loading period to be planned in advance.

### 3-STEP PROCEDURE



The MultiTeg™ is attached to the implant. It screws effortlessly into the implant's internal threads (approximately 6-8 Ncm of torque).



Just aim for the magnet on top of the MultiTeg™. Non-invasive, objective, accurate and repeatable. The peg is excited by magnetic pulses and vibrates due to the stiffness in the contact area between the bone and the implant surface.



An ISQ value is generated and shown on the display. This reflects the level of stability on the universal ISQ scale – from 1 to 99. The higher the ISQ value, the more stable the implant.

## MulTipeg™ REUSABLE

- MulTipeg™
- For all major implant systems \*
- Tissue friendly, durable titanium
- Autoclavable appx. 20 times
- Optimal platform fit
- ISQ Standard Calibrated

\*There are different MulTipeg™s available made to fit different implant system and types. Please refer to the MulTipeg list from the supplier, or scan the QR code to view online.

MODEL	ORDER CODE	PROMO PRICE
MulTipeg™	Various	<b>FREE</b> RRP-\$60 EACH



Scan the QR code for multipeg list



## Implant Handpieces



MODEL Ti-Max X-SG20L  
ORDER CODE C1003

- Optic
- Reducing 20:1
- Titanium
- CA Burs

PROMO PRICE  
**\$2,014**  
RRP-\$2,548



MODEL Ti-Max X-DSG20L  
ORDER CODE C1068

- Optic
- Reducing 20:1
- Titanium
- Dismantable
- CA Burs

PROMO PRICE  
**\$2,171**  
RRP-\$2,744



MODEL S-Max SG20  
ORDER CODE C1010

- Non Optic
- Reducing 20:1
- Stainless Steel
- CA Burs

PROMO PRICE  
**\$1,227**  
RRP-\$1,534



## Speed Increasing 1:3



MODEL Ti-Max X-SG93L  
ORDER CODE C1004

- Optic
- Increasing 1:3
- Triple spray
- FG Burs

PROMO PRICE  
**\$1,935**  
RRP-\$2,449



MODEL Ti-Max Z-SG45L  
ORDER CODE C1107

- Optic
- Increasing 1:3
- Triple Spray
- 25mm FG Burs

PROMO PRICE  
**\$1,645**  
RRP-\$2,056

## Direct Drive 1:1



MODEL Ti-Max X-SG25L  
ORDER CODE C1011

- Optic
- Direct Drive 1:1
- CA Burs

PROMO PRICE  
**\$1,782**  
RRP-\$2,226



MODEL Ti-Max X-SG65L  
ORDER CODE H1009

- Optic
- Direct Drive 1:1
- CA Burs

PROMO PRICE  
**\$1,756**  
RRP-\$2,195

## Microsurgical Handpieces



MODEL SGS-ES  
ORDER CODE H264

- Non Optic
- Direct Drive 1:1
- 65mm HP Burs

PROMO PRICE  
**\$1,125**  
RRP-\$1,407



MODEL SGA-E2S  
ORDER CODE H265

- Non Optic
- Increasing 1:2
- 65mm HP Burs

PROMO PRICE  
**\$1,830**  
RRP-\$2,288



MODEL SGA-ES  
ORDER CODE H263

- Non Optic
- Direct Drive 1:1
- 20° angulation
- 65mm HP Burs

PROMO PRICE  
**\$1,561**  
RRP-\$1,951



MODEL SGS-E2S  
ORDER CODE H266

- Non Optic
- Increasing 1:2
- 20° angulation
- 65mm HP Burs

PROMO PRICE  
**\$1,319**  
RRP-\$1,649

## ISD900

### Faster and Safer Implant Treatments

NSK's iSD900 cordless screwdriver helps to safely place and remove cover screws, healing caps and abutments during dental implant procedures, making treatment up to 50% faster.

MODEL	ORDER CODE	PROMO PRICE
ISD900	Y1001358	<b>\$2,669</b> RRP-\$3,337

- Universal to major implant systems
- Wide torque range 10-40 Ncm
- Adjustable in 1 or 5 Ncm increments
- Speed range 15, 20, 25 min<sup>-1</sup>



iSD900

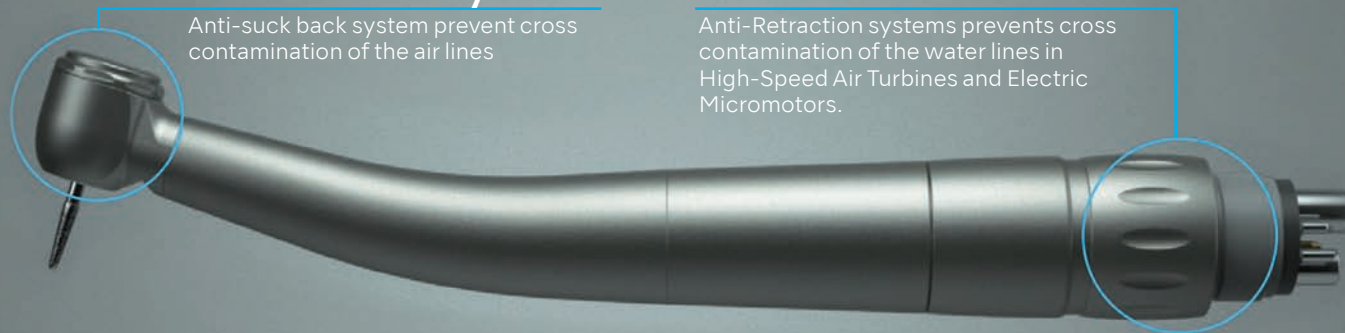
# DualDefense™ Proprietary Infection Control by NSK

## Clean Head System

Anti-suck back system prevent cross contamination of the air lines

## Anti-Retraction Valve

Anti-Retraction systems prevents cross contamination of the water lines in High-Speed Air Turbines and Electric Micromotors.



## Ti-Max Z LED Premium Titanium 2 YEAR WARRANTY

20%  
OFF



MODEL Ti-Max Z900L  
ORDER CODE P1111

- 26W Power
- Standard Head

PROMO PRICE  
**\$1,467**

RRP \$1,834

MODEL Ti-Max Z800L  
ORDER CODE P1110

- 23W Power
- Miniature Head

PROMO PRICE  
**\$1,467**

RRP \$1,834

## S-Max M Advanced Stainless Steel 1 YEAR WARRANTY



MODEL S-Max M900L  
ORDER CODE P1254

- 26W Power
- Standard Head

PROMO PRICE  
**\$1,023**

RRP \$1,279

MODEL S-Max M800L  
ORDER CODE P1253

- 23W Power
- Miniature Head

PROMO PRICE  
**\$1,023**

RRP \$1,279



## S-Max Pico Paediatric Highspeed

ULTRA MINI HEAD  
1 YEAR WARRANTY

MODEL S-Max Pico  
ORDER CODE P1140

- 8W Power
- Ultra Short Burs available

PROMO PRICE  
**\$1,023**

RRP \$1,279

Non-Optic options available.  
Other connections offered for KaVo, Sirona, W&H, Bien-Air.



## Ti-Max X450L Surgical Highspeed

REAR EXHAUSTED AIR  
2 YEAR WARRANTY

MODEL Ti-Max X450L  
ORDER CODE P1078

- 21W Power
- 45° head
- Triple Water Jets

PROMO PRICE  
**\$1,242**

RRP \$1,552

# Buy ANY 6 Ti Max Handpieces

## Get FREE iCare\*



\*Buy any 6 Ti Max handpieces at RRP and receive a FREE iCare and adaptors of your choice!

- Pre-set solution volume based on handpiece type
- Thorough cleaning and lubrication with simple operation
- Chuck cleaning and lubricating function
- Purging mode removes excess oil
- Integrated 1.2 litre oil tank reduces burden of refill

### iCare C2 Type

ORDER CODE Y1002787

Dual high speed + Dual low speed Connectors requires 2 high speed Adaptors\*



### iCare C3 Type

ORDER CODE Y1002788

Single high speed + Triple low speed Connectors requires 1 high speed Adaptor\*



\*Adaptors available to fit NSK, KaVo, Sirona, Bien-Air, Morita high speed handpieces. Limit x1 free adaptor free per each iCare C3 and x2 free adaptors per each iCare C2.

iCare



## iClave plus



**FREE**  
BAR CODE PRINTER  
& WI-FI LOG  
SAVE \$1,569



Bar Code Printer



Wi-Fi Log

NEW

\* Available via authorised NSK Autoclave dealers

## iClave Plus + FREE accessories

B-type vacuum autoclave\*

MODEL	ORDER CODE	RRP PRICE
iClave plus	Y1003077	<b>\$9,990</b>

- 20% more sterilisation space than a conventional stainless steel chamber of the same size.
- Copper chamber minimises internal temperature fluctuations.
- Super fast cycle as quick as 18 minutes, including drying.
- One year warranty.
- Unit size: H428 x W445 x D532mm, chamber 18L.

## Optional PURITY Water Purifier

MODEL	ORDER CODE	PROMO PRICE
PURITY OR2	Z1284001	<b>\$1,301</b>

Plus free shipping if buying both offers!

RRP \$2,602



**50% OFF**