



presidential 2020

**Instant asset
write-off up
to \$150K!**

EOFY Specials

April - June 2020



**Government
stimulus
loans of up
to \$250K
with delayed
payments**



presidential
dental | medical | veterinary



Luke Williams
0421 493 876
NSW/ACT



James Wallace
0427 758 650
Greater Sydney

STIMULUS Instant Asset-Writeoff threshold increased from \$30,000 to \$150,000!

The government is increasing the instant asset write-off threshold from \$30,000 to \$150,000, it is also expanding access to the scheme to include businesses with aggregated annual turnover of less than \$500 million (up from \$50 million).

This scheme is only available for the remainder of the financial year, which means it covers any assets purchased before 30 June.

The threshold applies on a per-asset basis, meaning businesses can write off multiple assets. It also applies to both new and used assets, so long as the assets have been purchased in the current financial year.

The government said in the 2017-18 financial year, more than 360,000 businesses used the instant asset write-off, claiming deductions valued at more than \$4bn.

For more information, see the fact sheet from the Treasury, as well as the Treasury website.



Government Stimulus Offers

SME Guarantee Scheme

Under a new SME coronavirus guarantee scheme, the government has pledged to guarantee 50% of new short-term, unsecured loans to small and medium businesses.

The government will guarantee up to \$40 billion in new lending, in a bid to further encourage new credit to SMEs.

In addition, for lenders providing credit to existing SME customers, the government is providing a temporary exemption from responsible lending obligations, meaning small business owners could access cash more quickly and efficiently.

Pause on small business loan repayments

There is also relief for small businesses already repaying loans. On Friday, the Australian Banking Association announced Aussie banks are pressing pause on repayments for small business loans.

This is expected to apply to more than \$100 billion in existing loans, and could return up to \$8 billion to Australian businesses.

Presidential urges clinic owners to please ensure you are making the most of the incentives and funds relief available to small businesses during this challenging period. Please also discuss what is applicable in your particularly situation, with your accountant or financial advisor.

CONSUMABLES SPECIALS

A-dec ICX Water Bottle Tablets



20% OFF

0.7L (box of 50 tablets)

Save \$17.70!

\$70.80

(while stocks last)

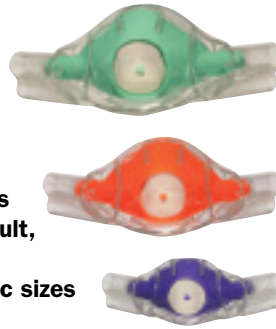
2.0L (box of 50 tablets)

Save \$26.40!

\$105.60

(while stocks last)

Clearview RA Masks



- 5 flavours
- Large Adult, Adult & Paediatric sizes

SPECIAL PRICING!

\$99.00 EA

(while stocks last)

Bio Hygiene - Free Trial!



Free Trial

20% OFF

Bevisto Cryl 5L - Dental Chair Cleaner

\$49.50

(while stocks last)

Helix Tests



20% OFF

Per 250 strips

Save \$48.00!

\$190

(while stocks last)

Riskontrol Disposable Syringe Tips



20% OFF

Your choice of flavours – Mandarin or Mint

\$63.75

Save \$31 per box of 250 (while stocks last)

A-dec Triplex Tips



20% OFF

23-0872-01
Pack of 5

\$72.40

SAVE \$18.10!

23-0872-02
Pack of 25

\$311.20

SAVE \$77.80!

Satelec Newtron Scaler Handpiece



MORE THAN 50% OFF

SA-F12281
(Non-LED model)

ADX SPECIAL PRICE

\$528
RRP \$1,097.50

Showroom & over-stock specials – MASSIVE SAVINGS!

- Miele PG8581 White (Starter Pkg) – Thermal Washer Disinfector
- Acteon Curing Lights
- SoprolIFE & 717 First Camera
- PSPiX – Phosphor Plate Xray Scanner
- X-mind DC – Xray wall mounted generator
- X-mind Unity – Xray wall mounted generator
- PRIME OPG – Column mounted
- TRIUM CBCT 3D with CEPH arm
- Multidem – autoclave demineralisation systems
- LISA VA (original model) – 17L autoclave + LisaSafe Kit
- LISA Bag Sealer
- MelaTherm ex-showroom model – Thermal Washer Disinfector
- Assistina 3x3
- Assistina 301P
- Biosonic Ultrasonic Cleaner UC150
- 521 & 522 stools
- W&H Elcomed Surgical Console
- W&H Implantmed SI-1023 Set 6 with ISQ Module
- Osstel ISQ Beacon

Download our Consumables Catalogue, and email your consumables shopping list to orders@presidental.com.au



ADX STOCK SPECIALS*
MASSIVE DISCOUNTS!

THE NEW A-dec 500!

- Sky Blue Seamless (formed) upholstery
- Continental delivery with standard size tray & holder
- Assistant suction
- Cuspidor with support centre
- Dual hub with chair-mounted Radius-LED light
- Electric Motor and Satelec Newtron Scaler
- 22" Neovo Monitor + Mount
- 521+522 stools
- Advanced Air System + RK-97L handpiece
- USB powered hub

SAVE
\$18,020

RRP \$90,103
SPECIAL PRICE:

\$72,082



*Image for illustration purposes only

A-dec 400

- Sewn Upholstery (GRANITE colour)
- Lever Headrest
- 332/4/VER.B Radius Style Traditional Delivery System including tray
- Fibre-optics and Deluxe Touchpad
- Electric Motor
- EMS No Pain Scaler
- 551 Assistant Suction and Instrumentation
- Cuspidor
- Chair mounted LED Light
- 400 Series Stools
- 381 Monitor Mount
- Neovo Medical Grade Monitor 22" screen

SAVE
\$13,094

RRP \$65,472
SPECIAL PRICE:

\$52,378



*Image for illustration purposes only

A-dec 300 Pedestal

- Seamless Upholstery (SAPPHIRE colour)
- 334/4/VER.B Pedestal Style Traditional Delivery System including tray
- Fibre-optics and Deluxe Touchpad
- Electric Motor
- EMS No Pain Scaler
- Assistant Suction and Instrumentation
- Cuspidor and Support Centre
- Pedestal Mounted LED
- 400 Series Stools
- 381 Monitor Mount
- Neovo Medical Grade Monitor 22" screen

SAVE
\$10,561

RRP \$52,807
SPECIAL PRICE:

\$42,246



*Image for illustration purposes only

PSPIX - Phosphor Plate Digital Xray Scanner

SAVE
\$1,574

RRP \$10,499
SPECIAL PRICE:

\$8,924



ASK US ABOUT
ADDITIONAL
ADX SHOWROOM
EQUIPMENT OFFERS
- MASSIVE SAVINGS
ON OFFER!

PLEASE CALL 1800 773 743
TO BOOK YOUR SHOWROOM APPOINTMENT
AT THE NEWCASTLE OR SYDNEY FACILITIES



SPECIALS

See the
**NEW A-dec
500**

**UP TO \$13,000
FREE PRODUCTS
ON CHAIR
PACKAGES**

CHOOSE INTEREST FREE
OR NO REPAYMENT
FINANCE OPTIONS

A legend,
redefined

NEW



**LISA & LARA
AUTOCLAVES**



**SUPER
HANDPIECE
SAVINGS**

ACTEON

**GREAT
IMAGING
DEALS**



Bundle and save across A-dec W&H and Acteon

Which solution is right for you?



NEW A-dec 500
A legend redefined

\$13,000
worth of **FREE PRODUCTS²**



A-dec 400
Accessible. Strong. Style

\$9,000
worth of **FREE PRODUCTS²**

Putting together your ultimate package is easy.
Choose a dental chair package¹ to suit your needs. Then choose your **FREE** products to the nominated value.



A-dec 300
Smart. Sensible. Simple

\$6,500
worth of **FREE PRODUCTS²**



A-dec 200
Strong. Durable. Accessible

\$3,500
worth of **FREE PRODUCTS²**

CHOOSE INTEREST FREE OR NO REPAYMENT FINANCE OPTIONS

Choose your FREE products from the following ...

ACTEON Sopro Camera Range



Restoration, Prosthetic handpieces and reprocessing device range



Conditions: ¹Chair package must include Chair, upholstery, delivery system, assistant's delivery, light, electric motor, scaler & stools package. ²Choose from W&H restoration, prosthetic handpieces and reprocessing devices range, Acteon cameras, W&H Lisa and Lara sterilisers. ³All offers in this brochure available until 30th June 2020. ⁴Chair package images are for illustration purposes only. ⁵Finance offers available from participating A-dec dealers and end 30th June 2020. ⁶All FREE products values are calculated at RRP including GST. ⁷FREE product offers cannot be used in conjunction with any other offer.

Incredible inside & outside



NEW

lisa

17L
\$14,990

22L
\$15,990

FREE
Wifi dongle
and helix
test



Incredible
usability
EliSense



Incredible
traceability
EliTrace



Incredible
performance
Eco Dry +

**Buy a
Lisa or Lara
Get 50% OFF RRP**
choice of a
Traceability Kit or
Assistina Twin



NEW

lara

17L
\$11,990

22L
\$12,990

FREE
All-in-one
activation
code

Unique upgradeability
with Activation Codes



Performance



Fast Cycle



Traceability



All in one

Super Savings across the handpiece range

assistina^{TWIN}

\$3,199

- Simple
- Efficient
- 10 second reprocessing time



**SAVE
\$1,900**



**Synea
Turbines
from only
\$999**

Digital Imaging Solutions



X MIND unity

\$5,999

- Integrates digital sensors
- Easy installation
- Proven reliability
- Dosage tracking

SAVE \$2,190



X MIND DC

SHORTER EXPOSURE TIME WITH X-MIND DC GENERATOR

\$4,999

SAVE \$1,890



Sensors SOPIX²

- ACE Technology prevents overexposure of the image
- A perfect image every time
- Fast and easy to use

	Size 1	Size 2
HD	\$7,999	\$9,999
Standard	\$5,999	\$6,999



Bundle a X-Mind Unity & Sopix² inside sensor and SAVE

	Size 1	Size 2
HD Bundle	\$12,999	\$13,999
Standard Bundle	\$9,999	\$11,999



FREE IMAGING SOFTWARE AND DOCK



Cameras

SOPRUCARE	\$6,999
SOPRULIFE	\$6,999
SOPRU717	\$4,999
SOPRU817	\$3,999

PSPPIX \$10,299

- Easy to use
- Covers 10 surgeries
- Small foot print
- Superior image quality



BONUS Choose a Size 4 imaging plate OR Consumable Pack



SAFE, SIMPLE, FLEXIBLE...

SOPIX



Size 1 Sensor (Standard definition)

\$6,999

SAVE \$1,863!

Size 2 Sensor (Standard definition)

\$9,999

SAVE \$2,661!

Size 1 Sensor (High definition)

\$8,999

SAVE \$2,691!

Size 2 Sensor (High definition)

\$10,999

SAVE \$1,991!

X-Mind Unity

X-Mind Unity delivers a successful X-ray every time with minimal exposure to radiation. ACE technology analyses the exposure and automatically freezes the perfect image. No more overexposed images!



\$6,299

SAVE \$1,891!

X-Mind DC

Reliable, consistent quality and long lasting high performance. With the X-Mind DC, safe exposure levels and high quality images are guaranteed.



\$5,299

SAVE \$1,591!

• X-mind Unity + Sopix Inside Standard Size 1

\$13,200

SAVE \$3,852!

• X-mind Unity + Sopix Inside Standard Size 2

\$16,200

SAVE \$4,650!

• X-mind Unity + Sopix Inside HD Size 1

\$15,200

SAVE \$4,680!

• X-mind Unity + Sopix Inside HD Size 2

\$17,200

SAVE \$3,980!



Innovative imaging

PSPIX²

is so intuitive that it has never been so easy to scan an image

COMPACT SIZE

Created with cutting edge technology and design, the PSPIX² is the smallest and most compact PSP scanner on the market.

SO SIMPLE TO USE

The large colour touchscreen provides intuitive indications for quick and easy use.

SUPERIOR IMAGES

Accurate images and striking contrast to ensure reliable diagnosis

EFFICIENCY

Click and Scan and begin your treatment within 12 seconds. PSPIX can be shared up to 10 workstations

\$10,299

SAVE \$3,151



FLEXIBILITY

Thinner and more flexible, the PSPIX² imaging plates are easy to use and provide outstanding patient comfort.

22 x 35mm



Size 0
Child

24 x 40mm



Size 1
Child Adult
Periapical

31 x 41mm



Size 2
Adult Bitewing
Periapical

69 x 54mm



Size 4
Occlusal (Equivalent to
3 size 3 plates)

1. Identify

From your initial treatment plan with an OPG Captured by X-Mind Trium



2. Diagnosis

Fluorescence technology in Sopro cameras for better patient communication, case acceptance and added diagnostic value.



X-Mind™ Trium!



Premium quality imaging at an affordable price!

Reasons to choose X-Mind™ Trium

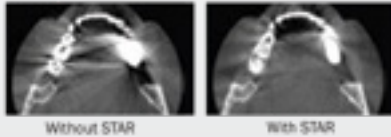
The smallest footprint on the market with the CEPH

- 4 F.O.V. (Field of view)



- 360° degree rotation from 18 to 27 seconds depending on the selected field of view

- An artefacts reduction filter (STAR) for easy tissue distinction (bone/tooth/metal)



- Option to upgrade to 3D

ACTEON imaging suite



Quality images via an interface that is simple, quick and intuitive

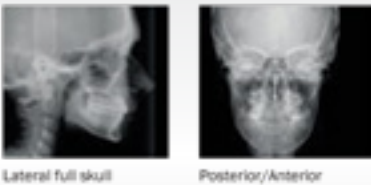
- Easy to mark landmarks on mandible, maxilla and angulation of the teeth
- Able to import images to third party software

Receive additional 1 year of warranty at no charge!



Book a demo at the showroom on 1800 773 743

Cephalometric radiology



- Due to its patented cinematic and collimation, patient positioning is easier on X-Mind® Trium.
- Install the cephalometric arm on the right or left, depending on the configuration of the office.

Panoramic radiology



Whether raw or filtered to optimise the details, panoramic X-Mind Trium images support a fast and easy diagnosis.

- **CLEAREST 3D IMAGES ON THE MARKET**
- **LOWEST RADIATION EXPOSURES**
- **EASY TO USE**
- **SMALLEST FOOTPRINT**
- **NO LICENSING FEES!**
- **RELIABLE AFTER-SALES SUPPORT**

3. Treatment Plan

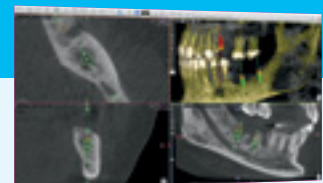
Start your treatment with HD Sopix Sensors and X-Mind Unity x-ray generators. PSPIX2 – The most versatile and fastest scanner producing digital radiographs in seconds



12 SECONDS

4. Integrate

Complex cases need a 3D perspective. X-Mind Trium delivers 75µm resolution images for the most predictable outcome.



X-Mind™ Prime – OPG/CONE BEAM

REALIZE A COMPLETE OVERVIEW OF THE MOUTH

PROVIDE A GLOBAL CHECK-UP WITH HIGH-QUALITY PANORAMIC IMAGES

- EASY TO INSTALL
- SIMPLE TO USE
- GREAT RETURN ON INVESTMENT



Interproximal carries on 21 and 22. Endodontic treatment and apical lesion on 47.

With X-mind Prime, benefit from:

- Accurate panoramic examinations
- Improved communication with your patients
- Minimum time for examinations preparation
- Sharp image at first view



Wisdom teeth positioning.



Verify the implant positioning right after the surgery.

FREE
Bonus – 1 year
Comprehensive
Warranty
+ 2 years
Manufacturer's
limited warranty!



Check the endodontic treatment performed on the 47.



FOLLOW-UP YOUR TREATMENT AND EFFICIENTLY COMMUNICATE WITH YOUR PATIENT



Cordless Polishing System Special

Package consists of:

- › PL-40 H handpiece drive incl. handpiece sleeve
- › Foot control C-NW
- › Charger with adaptor
- › Handpiece holder

Special offer:

- › four (4) pkts x (100) DPAs
- › free of charge
- › with Cordless PL-40 H

Value \$ 528.00

\$ 1,995.00

SAVE \$655.90



Prophy Angle Cups 150°

- soft / apple green 100 pcs **\$ 132.00**
- firm / dark green 100 pcs **\$ 132.00**

proxéo TWIST Cordless Polishing System



All prices include 10% GST





Air Polishing System Special

- › one Box (4x 250g) Smooth Sodium Bicarbonate powder
Value \$ 195.00

\$ 1,950.00

Proxeo Aura prophy set

- › Air polishing handpiece
- › Spray head 120°
- › Prophylaxis Powder SOFT (250g)
- › Accessories

Connection

- › PF-60 (W&H RotoQuick)
- › PF-60 M (Kavo Multiflex)
- › PF-60 N (NSK)
- › PF-60 S (Sirona)



Spray head 120°
\$ 375.00



Spray head short 120°
\$ 375.00



Spray head 90°
\$ 375.00



Spray head short 90°
\$ 375.00

Prophylaxis Powder SOFT

Sodium Bicarbonate, 4x250g
Ø Particle size: 40 µm **\$ 135.00**

Prophylaxis Powder SMOOTH

Calcium Bicarbonate, 4x250g
Ø Particle size: 45-75 µm **\$ 195.00**



proxeo AURA



All prices include 10% GST





Proxeo Ultra Set **Special**



PB-530 Package consists of:

- › Control unit PB-530 with coolant tank, switch-mode power supply and 1.8 m supply hose
- › Foot control C-NW
- › Set Q-Link (quick connection)
- › Handpiece PB-5 L Q
- › Tips: 1UQ, 2UQ, 1PQ, 1IQ incl. tip exchanger with torque limitation

\$ 3,750.00 Save \$ 600.00



proxeo ^{ULTRA}

PB-510 Package consists of:

- › Control unit PB-510 with coolant hose and filter, switch-mode power supply and 1.8 m supply hose
- › Foot control C-NF
- › Set Q-Link (quick connection)
- › Handpiece PB-5 L Q
- › Tips: 1UQ, 2UQ, 1PQ incl. tip exchanger with torque limitation

\$ 2,250.00 Save \$ 500.00



All prices include 10% GST





LatchShort Polishing System Special

WP-66 W

4:1, contra-angle handpiece system
LatchShort for all W&H LatchShort
Prophy Cups / -Brushes

Special offer:

- › one pack (144) Prophy Cups
- › free of charge
- › with WP-66 W

Value \$ 120.00

\$ 550.00

SAVE \$100.00



Prophy Cups

LatchShort

- soft / apple green 144 pcs **\$ 120.00**
- firm / dark green 144 pcs **\$ 120.00**
- cup-shaped brushes
- soft / clear 144 pcs **\$ 168.00**

proxeo TWIST LatchShort Polishing System



All prices include 10% GST





W&H Implantmed Classic Handpiece Package

- › Control unit (230 V or 120 V)
- › Motor EM-19 with 1.8 m cable
- › Incl. 5 hose clips
- › Foot control S-N2
- › Irrigant and universal support
- › Mains cable
- › 3 disposable coolant hoses

Purchase a Implantmed Set and receive a
BONUS WI-75 E/KM 20:1 surgical contra-angle
BONUS Set of disposable spray tubes, 1.8m cable

\$ 5,610.00

SAVE \$1,529.00



All prices include 10% GST



WI-75 E/KM

implantmed CLASSIC



W&H Implantmed Plus Special Packages

The Implantmed Sets consists of:

- › Control Unit
- › Mains Cable
- › Motor Support
- › Stand
- › Locking Pins
- › Disposable Irrigation Tubing Set

Osstell Beacon Package

BONUS 2x boxes SmartPegs -

Online Redemption Value \$ 510.00

\$ 3,995.00

SAVE \$850.00



Set 3 Special consists of:

- › Foot Control - Cabled
- › Motor with 1,8 m Cable and Clips (without Light)
- › **BONUS:** S-11 or WS-75 Surgical contra-angle 20:1 and Set of disposable spray tubes, 1.8m cable

\$ 6,018.00

Value \$ 1,988.00

Set 5 Special consists of:

- › Foot Control - Cabled
- › Motor with 1,8 m Cable and Clips with LED Light
- › **BONUS:** S-11 L or WS-75 L surgical contra-angle 20:1 and Set of disposable spray tubes, 1.8m cable

\$ 7,293.00

Value \$ 2,141.00

Set 6 Special consists of:

- › Foot Control - Wireless
- › Motor with 1,8 m Cable and Clips with LED Light
- › **BONUS:** S-11 L or WS-75 L surgical contra-angle 20:1 and Set of disposable spray tubes, 1.8m cable

\$ 8,058.00

Value \$ 2,141.00



implantmed PLUS

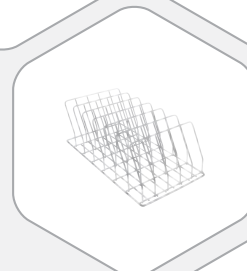
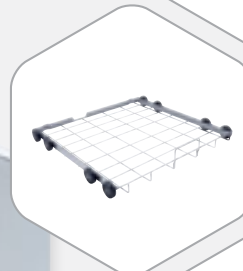
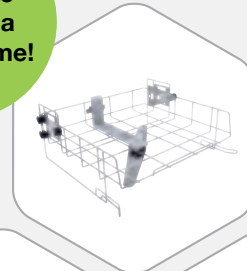
All prices include 10% GST



Starter Package Special Offer

Miele Thermal
Washer Desinfector

Exclusive
offer for a
limited time!



All prices include 10% GST

Special Package Offer

PG8581 Thermal Washer Desinfector

Standard Upper and Lower Basket

E379: Open Mesh Instrument Tray 2x

E523: Cassette and Tray Holder

Bonus: ECOLAB Chemistry

\$ 15,495.00

Normally \$ 16,326.00



MINIMALLY INVASIVE PLANNING



X MIND prime

It's Time For Efficient 3D Diagnosis

- 3D diagnosis is more accessible than ever with a smart and compact solution
- Zero footprint space with the innovative wall mounted system
- Face- to- face patient positioning
- Unmatched quality (48 micron pixel size)
- Includes: workstation pc and monitor, wall switch, light.
- Mac and windows compatible with ais software
- 1 Minute to edit your implant report with the intuitive AIS software
- Multiple fov fulldentition (85 x93mm)-single jaw (85 x 50mm)-manibular teeth (50 x 50mm)- maxillary teeth (50 x50mm) tmj (85 x93mm)-sinus (85 x 93mm)
- Acteon will provide 5 pro licenses with each prime 3d.



Suggested
Promo Price
\$66,000*

Purchase X-MIND Prime 3D CBCT* (XMP 3D wall mount +WS + Monitor W120005 or XMP 3D Column Mount +WS + Monitor W120007)
Receive 12x10 FOV upgrade and additional 1-Year Warranty at **NO CHARGE**

X MIND prime 2D

It's Time For Smart Panoramic X-Rays.

X-Mind prime 2D is the latest addition to ACTEON's panoramic imaging product line. It blends cutting-edge technology with ease of use in a compact design. With X-Mind prime 2D, high tech is at your fingertips with tools for accurate diagnosis.

- X-Mind prime 2D is a lightweight and compact system that can fit into virtually any dental office. With its intelligent, wall-mounted design, the unit takes up zero floor space. Because the unit is delivered preassembled to the office, it can be installed by a single technician in under an hour, so it is up and running and does not interfere with office production.
- 2D diagnosis is more accessible than ever with a smart and compact solution

Suggested
Promo Price
\$25,550*

Purchase 1 x X-Mind Prime 2D
Receive additional 1-Year Warranty at **NO CHARGE**

Finally! A TRUE LOW DOSE 3D CBCT imaging system



IT'S TIME FOR TRUE LOW DOSE CBCT

TRUE LOW DOSE is the latest X-MIND® trium CBCT innovation from ACTEON, with up to 50% less radiation exposure and no loss of image quality and accuracy.

- **A FULL 360° ROTATION WITHOUT STITCHING**
A superior image acquisition achieved with a full 360° rotation
- **FINEST IMAGE PRECISION OF 75 MICROMETERS (µm)**
ENABLES 0.1 mm SLICE THICKNESS – Voxel size is key for greater detail.
- **4 Selectable FOVs;** 40 x 40mm, 60 x 60mm, 80 x 80mm & 110 x 80 mm to select the scanning area for examination and to minimise radiation exposure to patients
- **An Optimal filter for reading metal artefacts** - X-Mind Trium is equipped with dynamic artefact reduction filter to eliminate streaks and dark bands caused by the presence of metal
- Windows and Mac compatible
- Acteon will provide 5 PRO licenses with each Trium 3D
- The smallest footprint with CEPH (Patented)
- **5 year Warranty on Parts**



X-Mind Trium 3D TLD Offer:

**Purchase any 3D version of X-MIND Trium/Trium TLD or a 3D upgrade*,
Receive additional 1-Year Warranty at NO CHARGE**

X-Mind Trium 3D TLD PAN 3D Ceph :

**Purchase 3D TLD PAN 3D Ceph,
Receive additional 2-Year Warranty at NO CHARGE**

X-MIND trium 3 SOLUTIONS IN 1

- X-Mind® trium has an extensive range of options. It is upgradable on site.
- X-Mind® trium will adapt to the ever-increasing needs of your clinic by adding 3D imaging or digital® cephalometric modalities when you decide it is necessary.



	X-Mind® trium Pan	X-Mind® trium Pan 3D	X-Mind® trium Pan Ceph	X-Mind® trium Pan Ceph 3D
Pan	●	●	●	●
3D	○	●	○	●
Ceph	○	○	●	●

○ : available option

X-Mind Trium 2D Offer:

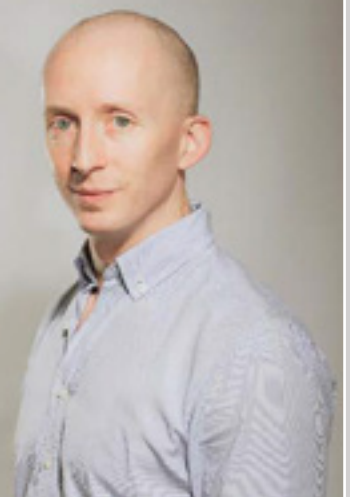
Purchase any Upgradable 2D X-Mind Trium ,
Receive an Acquisition PC **FREE** *plus* additional 1-Year Warranty **NO CHARGE**

(Excludes 2D X-MIND Trium's that cannot be upgraded. Acquisition PC includes manufacturer warranty only (monitor not included)).

X-Mind Trium 3D or X-Mind:

Purchase any 3D version of X-MIND Trium/Trium TLD or a 3D upgrade*,
Receive additional 1-Year Warranty at **NO CHARGE**

“Honestly, it’s a great machine. The images are nice and sharp and I haven’t had any issues with it. I can export the images to my practice management software to attach to patient records with no noticeable loss of quality.”



Dr Anthony Hopkins, Oasis Orthodontics Clarkson W.A.

Superior osseous surgery for immediate implant placement

- Immediate implant placement.
- Socket Preservation
- Save more Buccal Bone
- Less Bleeding
- Decreased Pain & Swelling Post-Op
- More Predictable
- Less Truma

For a FREE TRAIL please contact ACTEON ANZ 1300 228 366!

PIEZOTOME CUBE

BUY 1 x PIEZOTOME® CUBE (F50102), GET 1 x Extraction II Tip Kit (F87546) FREE



BONUS

IMPLANT CENTER 2

The alliance of technologies for safe and atraumatic bone surgeries

The alliance of the most advanced ultrasonic and rotary technologies ensures total independence in increasingly diverse clinical areas like:

- periodontics,
- endodontics,
- prophylaxis,
- restorative,
- pre-implant,
- implant surgeries.

Innovative, broad and robust surgical and non- surgical tips range.

**Delivered with a progressive footswitch, 2 brackets, 2 handpiece holders, 2 sterilizable irrigation lines and 30 perforators. This reference does not include Piezotome LED handpiece and tips.



BONUS

2 YEARS WARRANTY

BUY 1 x Implant Center II® (F27203),

GET 1 x FREE ESSENTIAL PACK Containing: autoclavable Piezotome II handpiece with cord, an Essential II kit with BS1S II, BS4 II, LC2 II, SL1 II, SL2 II, SL3 II tips and a Piezotome dynamometric wrench

Servotome a New Impulse In Electrosurgery

Perform oral surgery on soft tissue quickly, precisely and safely

CLINICAL APPLICATIONS

- Incisions/Excisions, - Frenectomy, - Gingivoplasty
- Coagulation, - Abscess incision,- Exposure of impacted/retained teeth
- Gingivectomy, etc.



BUY 1 x Servitome® (F57230), GET 5 x Electrodes (Mix N Match Ok) FREE

LIMITED TIME OFFERS FROM ACTEON

NEWTRON
BOOSTER



BUY 1 x Newtron
Booster (Ref: F60203),
GET
2 x Newtron Tips
FREE

NEWTRON
P5 B. LED



BUY 1 x Newtron
P5 B. LED (Ref: F61105),
GET
2 x Newtron Tips
FREE

NEWTRON
P5XS B. LED



BUY 1 x Newtron
P5XS B. LED (Ref: F62105),
GET
2 x Newtron Tips
FREE

NEWTRON® Tips - superior ultrasonics for all your procedures



PROPHYLAXIS



PERIODONTICS



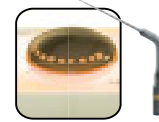
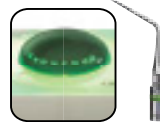
IMPLANT CARE



ENDODONTICS



PROSTHESIS
& ESTHETICS



BUY 4 x Newtron tips

GET 1 x **FREE*** (Mix N Match Ok)

* Bonus tip will be of equal or lesser value based on product purchased.

All clinical applications are easy with the all-in-one air polisher

AIR N GO
EASY



BONUS

- A single handpiece to cover supra-gingival prophylaxis and subgingival treatments
- Greater freedom of movement for accurate treatments
- 4 interchangeable nozzles available: SUPRA, PERIO easy, PERIO, PERIO Maintenance -
- Easier cleaning of the handpiece
- The Air-N-Go Easy handpiece is suitable for SUPRA and SUB gingival treatments.



BUY 1 x Air-N-Go, **GET** 1 x Air-N-Go Perio Nozzle *or*
1 x Perio Easy Nozzle **FREE**





MiniLED Standard

The **MiniLED Led** light still outperforms in power, efficiency and speed.

- **Wide Range of Wavelengths** Utilises the most effective spectrum part, 420-480nm, to polymerize most composites materials.
- **Fast Polymerization** Featuring 3 Modes, the MiniLED adapts to all needs and reduces the risks of material stress of foran optimal result.
- **FAST MODE The choice of rapidity.** Full power during 3, 4, 5 or 10 sec, according to the composite thickness
- **PULSE MODE Limits temperature rise.** 5 or 10 flashes of 1 sec for a secure composite polymerization
- **RAMPING MODE Avoids composite retraction.** Progressive power increase during 9 or 15 sec to ensure perfect restoration sealing

BUY 1 x MINI LED (F02621)

GET 1 x 7.5mm or 5.5mm Opalescent Light Guide FREE

Ris|Kontrol[®] air/water dental syringe

- **Flexible:** More flexible tips and very easy to bend with no shape-memory; keeping the ideal curve
- **Dry Air:** Two separate tubes guide air and water from the syringe to the end of the tip, ensuring totally dry air.
- **Ecological:** Tips made from entirely recyclable food-quality plastic Environmentally-friendly – pollution free in the case of combustion
- **Safe:** Protection for the patient, the practitioner and assistants. Reduced risk of direct or cross-contamination. No risk of ingestion: safety locking device
- **Universal:** Adec, Planmeca, DCI, Kavo, Sirona, Belmont, Morita S12
- **Variety of flavours,** Classic White (no scent), Classic Blue (no scent), White - Mint, Mardarin - Orange, Black - Liquorice, Green - Aniseed, Purple - Blackcurrant



BUY 3 x Boxes Riskontrol tips GET 1 x Riskontrol Adapter or 1 x Box 250 Riskontrol Tips FREE