



presidential 2019

Q3 SPECIALS



presidential
dental | medical | veterinary



Like our Facebook & Provide a Review to receive a FREE Consumables Kit (Save \$110!)

See page 16 for Terms and Conditions for this promotion.

 **1800 PRESIDENTAL**
(1800 773 743)

 presidential.com.au

 info@presidential.com.au

 [/PresidentialAustralia](https://www.facebook.com/PresidentialAustralia)

THE NEW A-dec 500!

**PKG DETAILS
COMING SOON**

**MASSIVE
SAVINGS**

RRP \$TBA
SPECIAL PRICE:

\$TBA

**Image for illustration purposes only*



A-dec 400

- Sewn Upholstery (PACIFIC colour)
- Lever Headrest
- 332/4/VER.B Radius Style Traditional Delivery System including tray
- Fibre-optics and Deluxe Touchpad
- Electric Motor
- Satelec Newtron Scaler
- 551 Assistant Suction and Instrumentation
- Cuspidor
- Chair mounted LED Light
- 400 Series Stools
- Rotoquick Coupling

**SAVE
\$13,456**

RRP \$61,654
SPECIAL PRICE:

\$48,198

**Image for illustration purposes only*



A-dec 300 Pedestal

- Seamless Upholstery (HAZELNUT colour)
- 334/4/VER.B Pedestal Style Traditional Delivery System including tray
- Fibre-optics and Deluxe Touchpad
- Electric Motor
- Satelec Newtron Scaler
- Assistant Suction and Instrumentation
- Cuspidor and Support Centre
- Pedestal Mounted LED
- 400 Series Stools
- Rotoquick Coupling

**SAVE
\$10,687**

RRP \$49,089
SPECIAL PRICE:

\$38,402

**Image for illustration purposes only*



**W&H Implantmed SI-1023
Set-6 Surgical Motor, with LED
and Wireless Foot Control**

**SAVE
\$1,580**

RRP \$7,900
SPECIAL PRICE:

\$6,320



PLEASE CALL 1800 773 743

TO BOOK YOUR SHOWROOM APPOINTMENT AT THE NEWCASTLE OR SYDNEY FACILITIES

Buy 2 Get 1 FREE



syneq^{VISION}

- 100% shadowless illumination of the treatment site with the Ring LED+
- Perfect ergonomics and quiet operation
- Lasting quality and long service life
- Scratch-resistant surface

syneq^{FUSION}

- Largest illumination field with LED+
- Continuous cooling with Quattro Spray
- Uncompromising user comfort
- Optimised grip profile

alegra

- Robust and durable
- Ergonomic design
- Simple bur changing with the push-button chucking system

These offers cannot be used with any other A-dec promotions. The lesser value handpiece will be offered as bonus. Buy 2 get 1 can include a mix of handpieces from the following models Fusion TG 97/98/100 L (includes NSK and Multiflex® couplings); WG-99LT/A; WG-56LT/A; HG-43A, WG-66LT/A; WK-66LT. Vision TK 97/98/100 L (includes Multiflex® couplings), TK-94L; WK-99 LT/LTS; WK-93 LT/LTS; WK-56LT/LTS; WK-66LT. Alegria WE-56. Offer ends on 30th September 2019.



Miele Thermal Disinfector

Miele PG 8581 White

- Eco dry – door automatically pops open at end of cycle, steam escapes naturally
- 42 minute cycles
- White model = 1 integrated dosing pump (chemical manually loaded, and automatically release via door)



Miele PG 8581 Stainless Steel

- Eco dry – door automatically pops open at end of cycle, steam escapes naturally
- 42 minute cycles
- Stainless Steel model = 2 integrated dosing pumps (1 manually loaded in door, 1 automatic release from inside back of the unit)



Miele PG 8591 Stainless Steel

- Stainless Steel
- Dry Plus – fan forced drying, guarantees dry load release
- 40 minute cycle
- 2 integrated dosing pumps



**For MIELE
Sales or Service
please call us on
1800 773 743**



WHICH A-DEC SOLUTION IS RIGHT FOR YOU?

A-dec 500 Premium • Graceful • Comfort



A-dec 400 Accessible • Strong • Style



Buy an A-dec chair package* and choose your FREE  handpiece package**



A-dec 300 Smart • Sensible • Flexible

A-dec 200 Proven • Efficient • Smart

* Chair package must include Chair, Upholstery, Delivery System, Assistant's instrumentation and light. Acteon OR EMS Scaler, Electric Motor (except A-dec 200) and Stool Package. Handpiece package prices include GST. These offers cannot be used with any other chair offers. Promotion ends 30th June 2019.
 **Choose from W&H restoration and prosthetics and reprocessing device range. Handpiece package prices include GST

PRACTICE PERFECT.



Combines the cutting efficiency and control of electric with the tactile feedback of air.

MICHAEL VAN GORDON, DMD PC
ST. HELENS, OR



15% off*
RK-97 and
RG-97
Handpieces!



The choice is yours

The Primea Advanced Air System is available with a 5x Ring LED+ (RK-97 L) or LED+ (RG-97 L).

A legend,
redefined



NEW A-dec 500
\$13,000
FREE HANDPIECE PACKAGE**
Superior Patient Experience. Optimal Access.

*Chair package must include Chair, Upholstery, Delivery System, Assistant's instrumentation and light. Scaler, Electric Motor (except A-dec 200) and Stool Package. Handpiece package prices include GST. These offers cannot be used with any other chair offers. Promotion ends 30th September 2019. **Choose from W&H restoration and prosthetics and reprocessing device range. Handpiece package prices include GST

Package Special Includes:

- 200 Chair
- Seamless Upholstery
- 200 Delivery with Standard Touchpad and large workspace
- Satelec Scaler with Potentiometer
- Support Centre with Spittoon
- Assistants Instrumentation
- 200 Halogen Light



**A-DEC 200
FROM
\$25,500!**



Optional Upgrades

- 300 Delivery on 200 chair
- Sewn Upholstery
- Satelec Scaler
- 300 LED light
- Stainless Steel Suction HVE/SE handpieces
- Electric Motor
- Monitor and Mount
- Stools

**W&H Bonus applies to qualifying chair configurations,*

**W&H Bonus can be selected from Restoration & Prosthetics range, also Reprocessing range.*

Solutions for the Dental Professional



lisa
SAVE \$1,000
 17L \$ 12,995
 22L \$ 13,995
BONUS 50% OFF LisaSafe Traceability Kit

- Fast
- Easy to use
- Secure traceability



LINA
SAVE OVER \$3,000
 17L \$ 8,999
 22L \$ 9,999

- Simple navigation
- Built in datalog
- Exclusive class B cycles



BUY 2 GET 1 FREE!

Made in Austria



Assistina Twin
SAVE \$1,800
 \$3,199

- Simple
- Efficient
- 10 second reprocessing time

Digital Imaging Solutions



SAVE OVER \$6,000
 \$9,999

PSPiX²

- Easy to use
- Small foot print
- Covers 10 surgeries
- Superior image quality



SAVE OVER \$3,000
 \$5,999

X MIND unity

- Integrates digital sensors (optional)
- Easy installation
- Proven reliability
- Dosage tracking



FREE DOCKING STATION WITH EVERY CAMERA
 FROM \$4,999

Cameras



SAVE OVER \$2,000
 FROM \$6,599

Sensors

BONUS

STOOLS PACKAGES

400 SERIES STOOLS - \$2,750 (SAVE \$1,175!)

OR

500 SERIES STOOLS - \$3,750 (SAVE \$2,010!)



A-dec 400 STOOLS



A-dec 500 STOOLS



Beacon Measure Implant Stability



**BONUS
OFFER**

\$4,750

103000

Receive 2x boxes
(10 pcs) Smartpegs
FREE when you
purchase a Beacon
(SAVE \$500!)

Easy   

TECHNOLOGY BASED ON 900 SCIENTIFIC ARTICLES

The Osstell Beacon shows you within a matter of seconds, with its colour scheme, when an implant is osseointegrated and can therefore be loaded. Because it operates wirelessly, it gives you greater freedom of movement in your dental practice.



 **OSSTELL**
A  COMPANY



FIGHT PERIODONTAL DISEASE

20% of Australians suffer from periodontal disease.*

Inform your patients that periodontal disease infection impacts their whole body, with potential serious health implications!



DETECT



Inflammation caused by periodontal disease.

DIAGNOSE



Periodontal disease at all of its stages and educate your patients.

TREAT



Periodontal disease at its earliest stages.



SOPRUCARE

Reveal plaque, calculus, and gingival inflammation.

*Australian National Survey of Adult Health (2004–2006) <https://www.aihw.gov.au/reports/dental-oral-health/oral-health-and-dental-care-in-australia-2015/contents/oral-health-in-australia>



A-dec hygienist package

The best come together to provide the perfect workflow solution for Hygienists.



Simply build onto your existing A-dec Hygienist chair or add to a new Hygienist chair purchase.

SOPROCARE Intraoral Camera



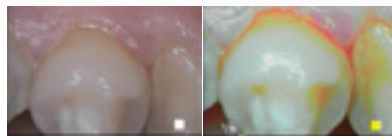
The SOPROCARE concept was developed to assist the dental professional during prophylaxis and periodontal treatment in the dental office. SOPROCARE reveals caries in CARIO mode, as well as new and old dental plaque in PERIO mode. SOPROCARE is the first product on the market to reveal gingival inflammation. In DAYLIGHT mode, SOPROCARE can also be used as a camera, providing all of the necessary tools to perform a complete and time efficient oral examination.

Under Perio mode, it differentiates the colour of tissue and reveals old plaque by a shade of yellow and orange. Increase patient acceptance today and reveal what they can't see under the naked eye.

DENTAL PLAQUE

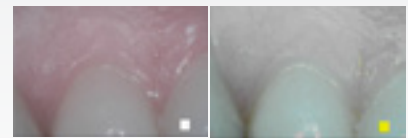


The healthy teeth keep their original colour



The old plaque ranges from yellow to orange depending on its mineralization

INFLAMMATION



The healthy gum appears pale pink



A severe gingival inflammation is indicated by bright and voluminous magenta-red areas

Images made by Pr. Tassery, Head of the Preventive and Restorative Department, Marseilles Dental School, University AMU, LBN Montpellier I.





Innovative imaging

Communicate with your patients using Acteon cameras.

An easy way to show the need for treatment with high quality images.

FREE BONUS DIRECT USB DOCK (PORTABLE) - SAVE \$2,630. OR UPGRADE TO CHAIR-INTEGRATED USB DOCK FOR JUST \$300

FREE BONUS BOX OF SOPRO CAMERA SLEEVES VALUED AT \$570!*

SOPRO CARE

Detect and diagnose

- 1 Cario mode** - caries are detected as red, surrounding tissue is displayed black and white
- 2 Perio mode** - highlight plaque, calculus, and gingival inflammation
- 3 Daylight mode** - see details that are not visible with the naked eye

Price \$7,999*

SAVE OVER \$3,200!



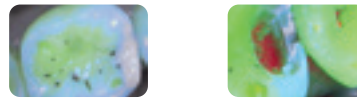
SOPRO LIFE

Improve the quality of your treatment

- 1 Diagnosis Aid mode** - identifying the development of occlusal and/or proximal carious lesions
- 2 Treatment Aid mode** - perform minimally invasive treatment by preserving healthy tissue
- 3 Daylight mode** - from portrait to macrovision, obtain sharp images with large depth of field

Price \$7,999*

SAVE OVER \$3,200!



SOPRO 717

Macro Vision with 3 magnifications modes; Extraoral, Intraoral & Macro mode with 115 x magnification.

Price \$5,999*

SAVE OVER \$3,200!



SOPRO 617

Point and Shoot with fixed focus and no fish eye effect, great for first time users and sessional operators.

Price \$4,999*

SAVE OVER \$3,200!



* Prices listed are when purchased with a chair package, and include FREE USB direct docking station. Ask us for separate promotional pricing when purchased without a chair package.

Contact us on 1800 773 743 for an in-surgery demonstration



SAFE, SIMPLE, FLEXIBLE...

SOPIX



Size 1 Sensor (Standard definition)

\$6,599 SAVE \$2,046!

Size 2 Sensor (Standard definition)

\$9,599 SAVE \$2,751!

Size 1 Sensor (High definition)

\$8,599 SAVE \$4,896!

Size 2 Sensor (High definition)

\$10,599 SAVE \$8,171!

X-Mind Unity

X-Mind Unity delivers a successful X-ray every time with minimal exposure to radiation. ACE technology analyses the exposure and automatically freezes the perfect image. No more overexposed images!

Price when purchasing with chair package

\$5,999

Price without chair package

\$6,999



X-Mind DC

Reliable, consistent quality and long lasting high performance. With the X-Mind DC, safe exposure levels and high quality images are guaranteed.

Price when purchasing with chair package

\$4,999

Price without chair package

\$5,999



- X-mind Unity + Sopix Inside Standard Size 1
- X-mind Unity + Sopix Inside Standard Size 2
- X-mind Unity + Sopix Inside HD Size 1
- X-mind Unity + Sopix Inside HD Size 2

\$12,500 SAVE \$5,775!

\$15,500 SAVE \$6,460!

\$14,500 SAVE \$8,605!

\$15,600 SAVE \$12,780!



Innovative imaging

**PSPIX
SAVE
\$6,251!**

PSPIX²

is so intuitive that it has never been so easy to scan an image

COMPACT SIZE

Created with cutting edge technology and design, the PSPIX² is the smallest and most compact PSP scanner on the market.

SO SIMPLE TO USE

The large colour touchscreen provides intuitive indications for quick and easy use.

SUPERIOR IMAGES

Accurate images and striking contrast to ensure reliable diagnosis

EFFICIENCY

Click and Scan and begin your treatment within 12 seconds. PSPIX can be shared up to 10 workstations

\$9,999

SAVE \$6,251



FLEXIBILITY

Thinner and more flexible, the PSPIX² imaging plates are easy to use and provide outstanding patient comfort.

22 x 35mm



Size 0
Child

24 x 40mm



Size 1
Child Adult
Periapical

31 x 41mm



Size 2
Adult Bitewing
Periapical

69 x 54mm



Size 4
Occlusal (Equivalent to
3 size 3 plates)

1. Identify

From your initial treatment plan with an OPG Captured by X-Mind Trium



2. Diagnosis

Fluorescence technology in Sopro cameras for better patient communication, case acceptance and added diagnostic value.



X-Mind™ Trium!

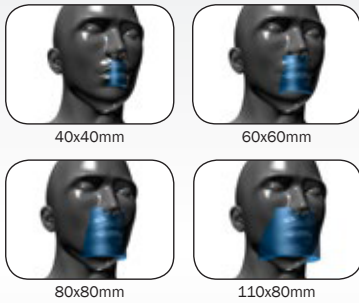
Premium quality imaging at an affordable price!



Reasons to choose X-Mind™ Trium

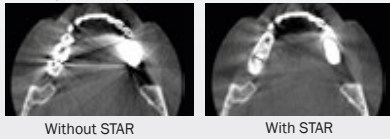
The smallest footprint on the market with the CEPH

- 4 F.O.V. (Field of view)



- 360° degree rotation from 18 to 27 seconds depending on the selected field of view

- An artefacts reduction filter (STAR) for easy tissue distinction (bone/tooth/metal)



- Option to upgrade to 3D

ACTEON
imaging suite



Quality images via an interface that is simple, quick and intuitive

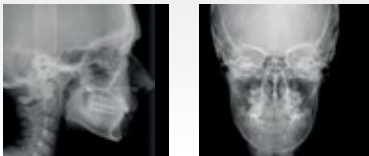
- Easy to mark landmarks on mandible, maxilla and angulation of the teeth
- Able to import images to third party software

Book a demo at the showroom on 1800 773 743

- **CLEAREST 3D IMAGES ON THE MARKET**
- **LOWEST RADIATION EXPOSURES**
- **EASY TO USE**
- **SMALLEST FOOTPRINT**
- **NO LICENSING FEES!**
- **RELIABLE AFTER-SALES SUPPORT**



Cephalometric radiology



- Due to its patented cinematic and collimation, patient positioning is easier on X-Mind® Trium.
- Install the cephalometric arm on the right or left, depending on the configuration of the office.

Panoramic radiology



- Whether raw or filtered to optimise the details, panoramic X-Mind Trium images support a fast and easy diagnosis.

3. Treatment Plan

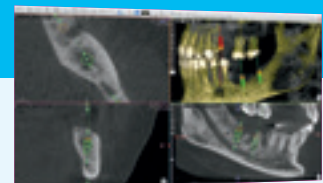
Start your treatment with HD Sopix Sensors and X-Mind Unity x-ray generators. PSPIX2 – The most versatile and fastest scanner producing digital radiographs in seconds



12 SECONDS

4. Integrate

Complex cases need a 3D perspective. X-Mind Trium delivers 75µm resolution images for the most predictable outcome.



X-Mind™ Prime - OPG/CONE BEAM

REALIZE A COMPLETE OVERVIEW OF THE MOUTH

PROVIDE A GLOBAL CHECK-UP WITH HIGH-QUALITY PANORAMIC IMAGES

- EASY TO INSTALL
- SIMPLE TO USE
- GREAT RETURN ON INVESTMENT

With X-mind Prime, benefit from:

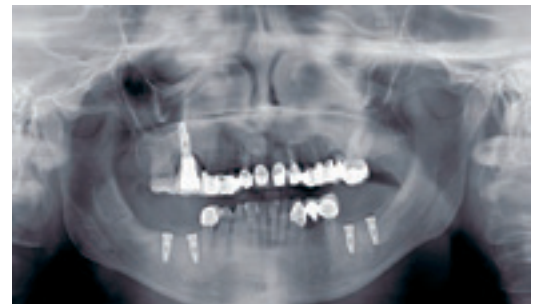
- Accurate panoramic examinations
- Improved communication with your patients
- Minimum time for examinations preparation
- Sharp image at first view



Interproximal carries on 21 and 22. Endodontic treatment and apical lesion on 47.



Wisdom teeth positioning.



Verify the implant positioning right after the surgery.



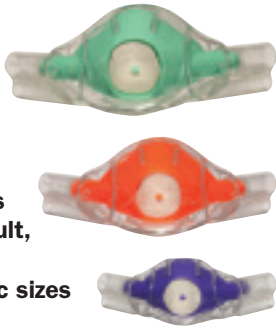
Check the endodontic treatment performed on the 47.



FOLLOW-UP YOUR TREATMENT AND EFFICIENTLY COMMUNICATE WITH YOUR PATIENT

CONSUMABLES SPECIALS

Clearview RA Masks



- 5 flavours
- Large Adult, Adult & Paediatric sizes

SPECIAL PRICING!

\$99.90 EA (while stocks last)

Riskontrol Disposable Syringe Tips



20% OFF

Your choice of flavours – Mandarin or Mint

\$76.00 Save \$19 per box of 250 (while stocks last)

Bio Hygiene - Free Trial!



Free Trial

20% OFF

Bevisto Cryl 5L - Dental Chair Cleaner

\$49.50 (while stocks last)

Helix Tests



20% OFF

Per 250 strips

Save \$48.00!

\$190 (while stocks last)

A-dec ICX Water Bottle Tablets



20% OFF

0.7L (box of 50 tablets)

Save \$17.70!

\$70.80 (while stocks last)

2.0L (box of 50 tablets)

Save \$26.40!

\$105.60 (while stocks last)

A-dec Triplex Tips



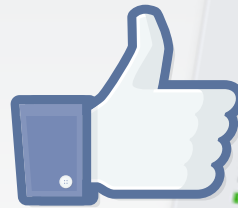
20% OFF

23-0872-01
Pack of 5

\$72.40
SAVE \$18.10!

23-0872-02
Pack of 25

\$311.20
SAVE \$77.80!



Like our Facebook & Provide a Review to receive a FREE Consumables Kit* (Save \$110!)

To receive your FREE Euronda Monoart Consumables Kit *while stocks last:

1. Like and Review our Facebook page `facebook.com/PresidentialAustralia`
2. Email (orders@presidential.com.au) us your clinic details and the person/clinic's Facebook profile name
3. State your preferred colour (*preference offered while stocks last, otherwise substitute colour to be supplied)

Terms and Conditions:

- Person/clinic who has liked and reviewed the page to be stated for verification
- Whilst consumables kit is FREE, freight is payable.
- Only 1 FREE Kit per clinic
- FREE kits *while stocks last - some colours may not be available.



Euronda®

Colours



Download our Consumables Catalogue, and email your consumables shopping list to orders@presidential.com.au



**LIMITED TIME OFFERS FROM ACTEON -
July/August '19 only!**



**Air 'N GO EASY,
PROPHY POLISHER,
ASK US ABOUT
SPECIAL PRICING!**

Perfect ultrasonic vibration...

- Treatments guided in real time with B.LED technology which simultaneously reveals and remove dental plaque.
- The widest range of tips (80) for a great clinical expertise and versatility, supporting both practitioners and patients.
- Perfectly controlled vibrations for precise and gentle treatments.
- The automatic and continuous frequency adjustment guarantees maximal and continuous efficiency, whatever the load applied.
- Linear and regular vibrations for painless treatments.



**NEWTRON
TECHNOLOGY**

NEWTRON BOOSTER



Non-LED Handpiece,
Quick-water disconnect.
(Delivered with a Newtron handpiece, a power supply,
a N°1 tip and an autoclavable universal wrench)

RRP \$1,881
SPECIAL PRICE:

\$1,085

F-60203

SAVE \$796!

NEWTRON P5 B.LED



LED Handpiece, Quick-water disconnect.
(Delivered with a Newtron Slim B.Led handpiece with blue ring, a
white LED ring, a F.L.A.G kit (5x1.5ml), an australian power supply
and a Pure Newtron kit (n.1, n.1S, H3 tips and an autoclavable uni-
versal wrench)

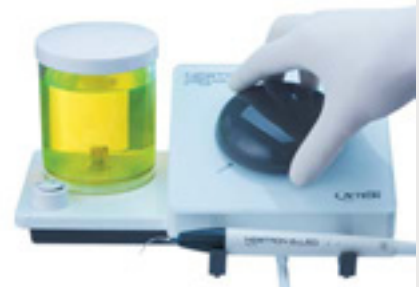
RRP \$4,046
SPECIAL PRICE:

\$2,617

F-61105

SAVE \$1,429!

NEWTRON P5XS B.LED



LED Handpiece with integrated irrigation
tank for any solution. (Delivered with a Newtron Slim
B.Led handpiece with blue ring, a white LED ring, a F.L.A.G kit
(5x1.5ml), an australian power supply and a Pure Newtron kit (n.1,
n.1S, H3 tips and an autoclavable universal wrench).

RRP \$4,780
SPECIAL PRICE:

\$3,091

F-62105

SAVE \$1,689!

NEWTRON® Tips - superior ultrasonics for all your procedures

- NEWTRON tips conserve teeth and meet all clinical requirements
- NEWTRON tips are developed by dentists for dentists.
They will offer you specific solutions, comfort and visibility.



BUY IN BULK & SAVE!

**ASK US FOR
SPECIAL PRICES ON
NEWTRON TIP KITS**

LIMITED TIME OFFERS FROM ACTEON -
July/August '19 only!

Satelec Curing Lights

Highly adaptable MiniLED – SUPERCHARGED

Acteon Mini LED products use a wide emitting spectrum. To activate the polymerization of all type of dental photosensitive materials like composites, we have created a complete range of lamps specifically designed for a maximal efficiency in a minimal time, allowing to cure a few brackets to a whole quadrant, in a single gesture.

MiniLED Supercharged gives the greatest power while offering totally safe modes for the tooth and the restoration

- 2000mW/cm² (Ø7.5mm light guide)
- 3000mW/cm² (Ø5.5mm light guide) (optional)

- **FAST MODE** The choice of rapidity. Full power during 3, 4, 5 or 10 sec, according to the composite thickness
- **PULSE MODE** Limits temperature rise. 5 or 10 flashes of 1 sec for a secure composite polymerization
- **RAMPING MODE** Avoids composite retraction. Progressive power increase during 9 or 15 sec to ensure perfect restoration sealing
- **Visibility Luminous screen** with customizable modes and times, curing time count and load indicator

RRP \$2,762

SPECIAL PRICE:

\$1,323

SAVE \$1,439! F-05214



Air 'N GO EASY,
PROPHY POLISHER,
ASK US ABOUT
SPECIAL PRICING!

MiniLED Australia

- Emits light in the most efficient part of the spectrum
- Only 6 to 12 seconds to polymerize 2mm of any composite
- Choice of three modes for optimal curing of all types of composite - Fast mode, Pulse mode and Ramping mode.

RRP \$1,741

SPECIAL PRICE:

\$903

SAVE \$838! F-02621



RISKONTROL, disposable triplex tips

Outstanding Hygiene – No Sacrifice Outcomes

SAFE

- Protection for the patient, the practitioner and assistants
- Reduced risk of direct or cross-contamination
- No risk of ingestion: safetylocking device

Ecological

- Tips made from entirely recyclable food-quality plastic
- Environmentally-friendly
- Pollution free in the case of combustion

UNIVERSAL

Adapters* available for any type of equipment

- Adapters in anodized aluminium, Propylux®, stainless steel or resin, very easy to screw or clip onto the syringe of your unit.
*Class I medical devices

Dry air

Two separate tubes guide air and water from the syringe to the end of the tip, ensuring totally dry air.

Economical

Saves time (no need for cleaning/disinfection/sterilization, so, no need to ensure traceability, etc).



RRP \$95 per box

SPECIAL PRICE:

\$70 per box of 250 tips

SAVE \$25 per box!



1800 PRESIDENTAL
(1800 773 743)



presidential.com.au



info@presidential.com.au



/PresidentialAustralia