



presidential 2019



Q4 Specials

October - December 2019



presidential
dental | medical | veterinary



Like our Facebook & Provide a Review to receive a FREE Consumables Kit (Save \$110!)

See page 16 for Terms and Conditions for this promotion.

 **1800 PRESIDENTAL**
(1800 773 743)

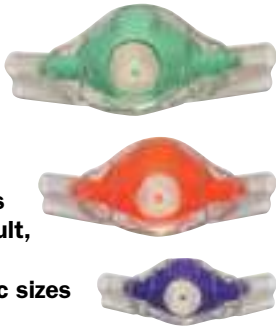
 presidential.com.au

 info@presidential.com.au

 [/PresidentialAustralia](https://www.facebook.com/PresidentialAustralia)

CONSUMABLES SPECIALS

Clearview RA Masks



- 5 flavours
- Large Adult, Adult & Paediatric sizes

SPECIAL PRICING!

\$99.90 EA (while stocks last)

Riskontrol Disposable Syringe Tips



20% OFF

Your choice of flavours – Mandarin or Mint

\$76.00 Save \$19 per box of 250 (while stocks last)

Bio Hygiene - Free Trial!



Free Trial

20% OFF

Bevisto Cryl 5L - Dental Chair Cleaner

\$49.50 (while stocks last)

Helix Tests



20% OFF

Per 250 strips

Save \$48.00!

\$190 (while stocks last)

A-dec ICX Water Bottle Tablets



20% OFF

0.7L (box of 50 tablets)

Save \$17.70!

\$70.80 (while stocks last)

2.0L (box of 50 tablets)

Save \$26.40!

\$105.60 (while stocks last)

A-dec Triplex Tips



20% OFF

23-0872-01
Pack of 5

\$72.40
SAVE \$18.10!

23-0872-02
Pack of 25

\$311.20
SAVE \$77.80!



Like our Facebook & Provide a Review to receive a FREE Consumables Kit* (Save \$110!)

To receive your FREE Euronda Monoart Consumables Kit *while stocks last:

1. Like and Review our Facebook page `facebook.com/PresidentialAustralia`
2. Email (orders@presidential.com.au) us your clinic details and the person/ clinic's Facebook profile name
3. State your preferred colour (*preference offered while stocks last, otherwise substitute colour to be supplied)

Terms and Conditions:

- Person/clinic who has liked and reviewed the page to be stated for verification
- Whilst consumables kit is FREE, freight is payable.
- Only 1 FREE Kit per clinic
- FREE kits *while stocks last - some colours may not be available.



Colours



Download our Consumables Catalogue, and email your consumables shopping list to orders@presidential.com.au



THE NEW A-dec 500!

- Sky Blue Seamless (formed) upholstery
- Continental delivery with standard size tray & holder
- Assistant suction
- Cuspidor with support centre
- Dual hub with chair-mounted Radius-LED light
- Electric Motor and Satelec Newtron Scaler
- 22" Neovo Monitor + Mount
- 521+522 stools
- Advanced Air System + RK-97L handpiece
- USB powered hub

SAVE
\$18,020

RRP \$90,103
SPECIAL PRICE:

\$72,082



**Image for illustration purposes only*

A-dec 400

- Sewn Upholstery (PACIFIC colour)
- Lever Headrest
- 332/4/VER.B Radius Style Traditional Delivery System including tray
- Fibre-optics and Deluxe Touchpad
- Electric Motor
- Satelec Newtron Scaler
- 551 Assistant Suction and Instrumentation
- Cuspidor
- Chair mounted LED Light
- 400 Series Stools
- Rotoquick Coupling

SAVE
\$13,456

RRP \$61,654
SPECIAL PRICE:

\$48,198



**Image for illustration purposes only*

A-dec 300 Pedestal

- Seamless Upholstery (HAZELNUT colour)
- 334/4/VER.B Pedestal Style Traditional Delivery System including tray
- Fibre-optics and Deluxe Touchpad
- Electric Motor
- Satelec Newtron Scaler
- Assistant Suction and Instrumentation
- Cuspidor and Support Centre
- Pedestal Mounted LED
- 400 Series Stools
- Rotoquick Coupling

SAVE
\$10,687

RRP \$49,089
SPECIAL PRICE:

\$38,402



**Image for illustration purposes only*

Lisa VA Class B - 17L Steriliser

SAVE
\$2,799

RRP \$13,995
SPECIAL PRICE:

\$11,196



PLEASE CALL 1800 773 743

TO BOOK YOUR SHOWROOM APPOINTMENT AT THE NEWCASTLE OR SYDNEY FACILITIES

Buy 2 Get 1 FREE



syneq^{VISION}

- 100% shadowless illumination of the treatment site with the Ring LED+
- Perfect ergonomics and quiet operation
- Lasting quality and long service life
- Scratch-resistant surface

syneq^{FUSION}

- Largest illumination field with LED+
- Continuous cooling with Quattro Spray
- Uncompromising user comfort
- Optimised grip profile

alegra

- Robust and durable
- Ergonomic design
- Simple bur changing with the push-button chucking system

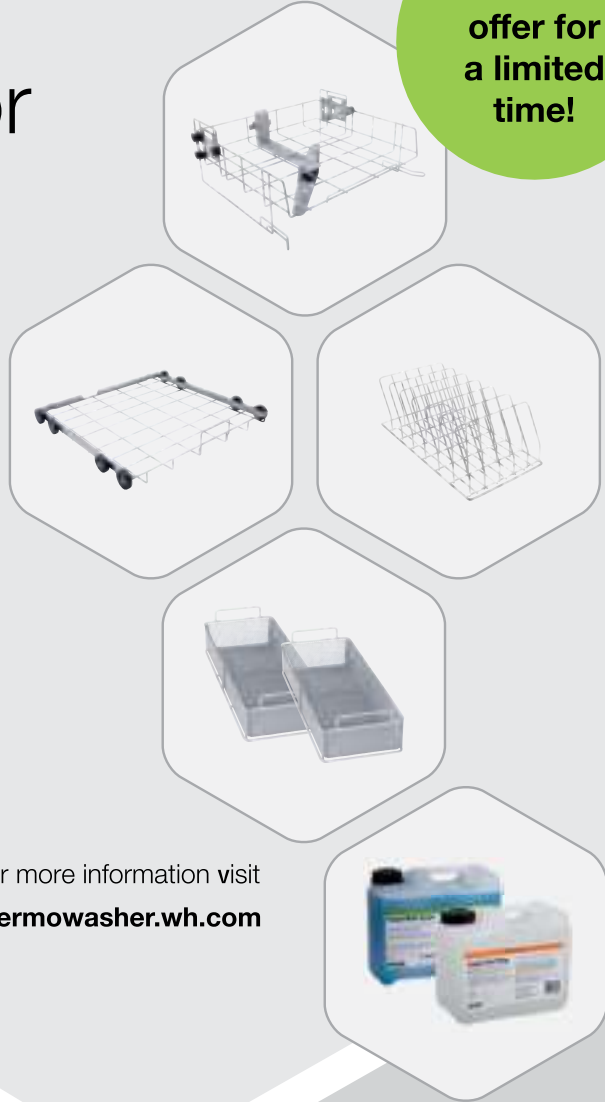
These offers cannot be used with any other A-dec promotions. The lesser value handpiece will be offered as bonus. Buy 2 get 1 can include a mix of handpieces from the following models Fusion TG 97/98/100 L (includes NSK and Multiflex® couplings); WG-99LT/A; WG-56LT/A; HG-43A, WG-66LT/A; WK-66LT. Vision TK 97/98/100 L (includes Multiflex® couplings), TK-94L; WK-99 LT/LTS; WK-93 LT/LTS; WK-56LT/LTS; WK-66LT. Alegra WE-56. Offer ends on 30th September 2019.



Starter Package Offer

Miele Thermal Washer Disinfector

Exclusive offer for a limited time!



For more information visit thermowasher.wh.com



Special Package Offer

- PG8581 Thermal Washer Disinfector**
- Bonus:** Standard Upper and Lower Basket
- Bonus:** ECOLAB Chemistry
- E379:** Open Half Mesh Instrument Tray x 2
- E523:** Cassette and Tray Holder

Normally \$ 15,253.00 Inc. GST
Now only \$ 13,694.00 Inc. GST



presidential
dental | medical | veterinary

WHICH A-DEC SOLUTION IS RIGHT FOR YOU?

A-dec 500 Premium • Graceful • Comfort



A-dec 400 Accessible • Strong • Style



Buy an A-dec chair package* and choose your FREE  handpiece package**



A-dec 300 Smart • Sensible • Flexible

A-dec 200 Proven • Efficient • Smart

* Chair package must include Chair, Upholstery, Delivery System, Assistant's instrumentation and light. Acteon OR EMS Scaler, Electric Motor (except A-dec 200) and Stool Package. Handpiece package prices include GST. These offers cannot be used with any other chair offers. Promotion ends 30th June 2019.
 **Choose from W&H restoration and prosthetics and reprocessing device range. Handpiece package prices include GST

PRACTICE PERFECT.



Combines the cutting efficiency and control of electric with the tactile feedback of air.

MICHAEL VAN GORDON, DMD PC
ST. HELENS, OR



15% off*
RK-97 and
RG-97
Handpieces!



The choice is yours

The Primea Advanced Air System is available with a 5x Ring LED+ (RK-97 L) or LED+ (RG-97 L).

A legend,
redefined



NEW A-dec 500
\$13,000
FREE HANDPIECE PACKAGE**
Superior Patient Experience. Optimal Access.

*Chair package must include Chair, Upholstery, Delivery System, Assistant's instrumentation and light. Scaler, Electric Motor (except A-dec 200) and Stool Package. Handpiece package prices include GST. These offers cannot be used with any other chair offers. Promotion ends 30th September 2019. **Choose from W&H restoration and prosthetics and reprocessing device range. Handpiece package prices include GST

SAVE THE DATE!

You're invited to an exclusive launch event
For the A-dec 500 'Redefined' dental chair

Sydney: Thursday 31st October, 6.30pm - 9.30pm
A-dec Showroom, Unit 8 5-9 Ricketty St, Mascot

Canberra: Thursday 7th November, 6.30pm - 9.30pm
QT Hotel, 1 London Circuit, Canberra

Earn CPD points and learn how to improve your surgery,
your health and your business!

Canape's, beer and wine will be provided. Only 50 seats
available at each location, RSVP to Luke to secure your
place – email luke@presidental.com.au



This event proudly sponsored by:



Package Special Includes:

- 200 Chair
- Seamless Upholstery
- 200 Delivery with Standard Touchpad and large workspace
- Satelec Scaler with Potentiometer
- Support Centre with Spittoon
- Assistants Instrumentation
- 200 Halogen Light



**A-DEC 200
FROM
\$25,500!**



Optional Upgrades

- 300 Delivery on 200 chair
- Sewn Upholstery
- Satelec Scaler
- 300 LED light
- Stainless Steel Suction HVE/SE handpieces
- Electric Motor
- Monitor and Mount
- Stools

**W&H Bonus applies to qualifying chair configurations.*

**W&H Bonus can be selected from Restoration & Prosthetics range, also Reprocessing range.*

Solutions for the Dental Professional



lisa
SAVE \$1,000
 22L \$13,995
BONUS 50% OFF LisaSafe Traceability Kit

- Fast
- Easy to use
- Secure traceability



LINA
SAVE OVER \$3,000
 17L \$ 8,999
 22L \$ 9,999

- Simple navigation
- Built in datalog
- Exclusive class B cycles



BUY 2 GET 1 FREE!

Made in Austria



Assistina Twin
SAVE \$1,800
 \$3,199

- Simple
- Efficient
- 10 second reprocessing time

Digital Imaging Solutions



SAVE OVER \$6,000
 \$9,999

PSPiX²

- Easy to use
- Small foot print
- Covers 10 surgeries
- Superior image quality



SAVE OVER \$3,000
 \$5,999

XMIND unity

- Integrates digital sensors (optional)
- Easy installation
- Proven reliability
- Dosage tracking



SAVE OVER \$4,000
 \$4,999

XMIND DC



Cameras

CAMERAS FROM \$3,399!

BUY 2 GET 1 FREE!*
 Inc FREE USB docking station



Sensors

SAVE OVER \$2,000 FROM \$6,599

BONUS

STOOLS PACKAGES

400 SERIES STOOLS - \$2,750 (SAVE \$1,175!)

OR

500 SERIES STOOLS - \$3,750 (SAVE \$2,010!)



A-dec 400 STOOLS



A-dec 500 STOOLS





W&H Implantmed Wireless Package

- + WS-75 L 20:1 surgical contra-angle
- + Wireless foot control

\$ 7,150.00 incGST

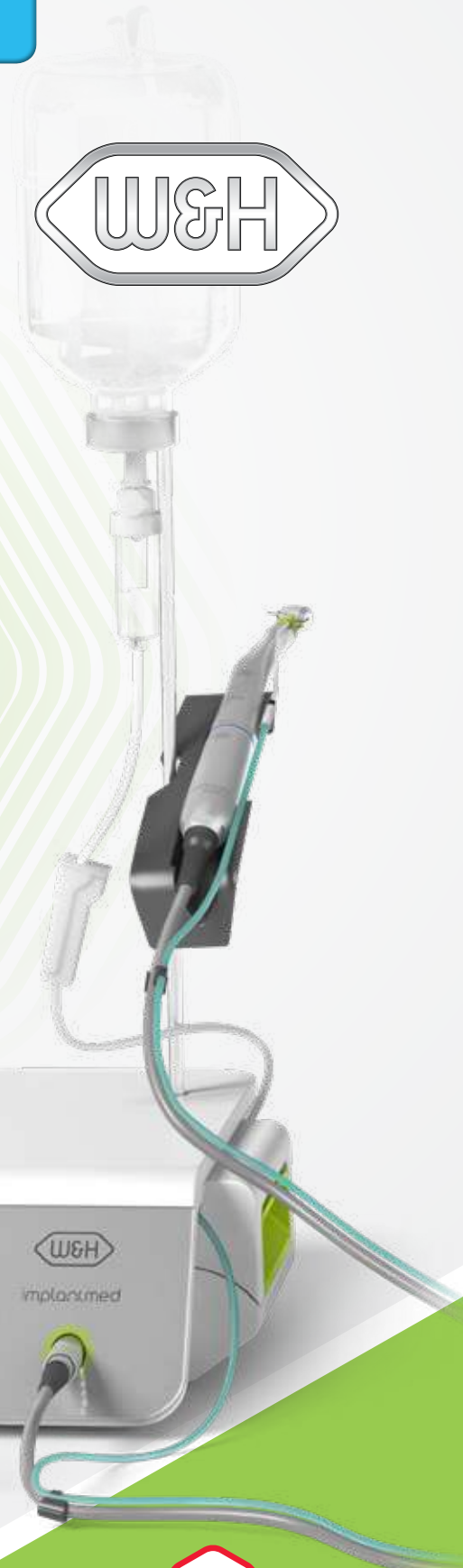
~~\$ 9,900.00 incGST~~

Osstell Beacon Package

- + 5x boxes Smartpegs

\$ 4,750.00 incGST

~~\$ 6,000.00 incGST~~



Starter Package

Limited offers

implantmed ^{PLUS}



presidential
dental | medical | veterinary



Implantmed

Receive a **FREE** upgrade from Implantmed Set-5 to Implantmed Set-6 as well as a **FREE** WS-75 L Surgical handpiece - Save a total of **\$3,500!**



FREE
WS-75 L surgical
handpiece with
Implantmed
Wireless set -
Save \$2,750!

AND

FREE
upgrade to
Implantmed
Wireless console
- Save \$750!



implantmed



presidential
dental | medical | veterinary





FIGHT PERIODONTAL DISEASE

20% of Australians suffer from periodontal disease.*

Inform your patients that periodontal disease infection impacts their whole body, with potential serious health implications!



DETECT



Inflammation caused by periodontal disease.

DIAGNOSE



Periodontal disease at all of its stages and educate your patients.

TREAT



Periodontal disease at its earliest stages.



SOPRACARE

Reveal plaque, calculus, and gingival inflammation.

*Australian National Survey of Adult Health (2004–2006) <https://www.aihw.gov.au/reports/dental-oral-health/oral-health-and-dental-care-in-australia-2015/contents/oral-health-in-australia>



A-dec hygienist package



The best come together to provide the perfect workflow solution for Hygienists.

Simply build onto your existing A-dec Hygienist chair or add to a new Hygienist chair purchase.

SOPROCARE Intraoral Camera



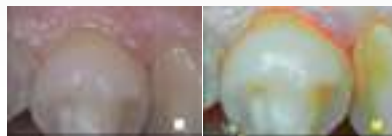
The SOPROCARE concept was developed to assist the dental professional during prophylaxis and periodontal treatment in the dental office. SOPROCARE reveals caries in CARIO mode, as well as new and old dental plaque in PERIO mode. SOPROCARE is the first product on the market to reveal gingival inflammation. In DAYLIGHT mode, SOPROCARE can also be used as a camera, providing all of the necessary tools to perform a complete and time efficient oral examination.

Under Perio mode, it differentiates the colour of tissue and reveals old plaque by a shade of yellow and orange. Increase patient acceptance today and reveal what they can't see under the naked eye.

DENTAL PLAQUE



The healthy teeth keep their original colour



The old plaque ranges from yellow to orange depending on its mineralization

INFLAMMATION



The healthy gum appears pale pink



A severe gingival inflammation is indicated by bright and voluminous magenta-red areas

Images made by Pr. Tassery, Head of the Preventive and Restorative Department, Marseilles Dental School, University AMU, LBN Montpellier I.





Innovative imaging

Communicate with your patients using Acteon cameras.

An easy way to show the need for treatment with high quality images.

BUY 2, GET 1 FREE* INCL FREE USB DOCKING STATION!

FREE BONUS BOX OF SOPRO CAMERA SLEEVES VALUED AT \$570!*

SOPRO CARE

Detect and diagnose

- Cario mode** - caries are detected as red, surrounding tissue is displayed black and white
- Perio mode** - highlight plaque, calculus, and gingival inflammation
- Daylight mode** - see details that are not visible with the naked eye

Price \$5,999*

SAVE \$1,971!



SOPRO LIFE

Improve the quality of your treatment

- Diagnosis Aid mode** - identifying the development of occlusal and/or proximal carious lesions
- Treatment Aid mode** - perform minimally invasive treatment by preserving healthy tissue
- Daylight mode** - from portrait to macrovision, obtain sharp images with large depth of field

Price \$5,999*

SAVE \$1,971!



SOPRO 717

Macro Vision with 3 magnifications modes; Extraoral, Intraoral & Macro mode with 115 x magnification.

Price \$3,999*

SAVE \$2,331!



SOPRO 617

Point and Shoot with fixed focus and no fish eye effect, great for first time users and sessional operators.

Price \$3,399*

SAVE OVER \$1,436!



Computer-direct USB dock

RRP \$2,630
SPECIAL PRICE:

\$2,104

SAVE \$526!

Chair-integrated mini dock

RRP \$2,930
SPECIAL PRICE:

\$2,344

SAVE \$586!

Contact us on 1800 773 743 for an in-surgery demonstration





SAFE, SIMPLE, FLEXIBLE...

SOPIX



Size 1 Sensor (Standard definition)

\$6,599

SAVE \$2,046!

Size 2 Sensor (Standard definition)

\$9,599

SAVE \$2,751!

Size 1 Sensor (High definition)

\$8,599

SAVE \$4,896!

Size 2 Sensor (High definition)

\$10,599

SAVE \$8,171!

X-Mind Unity

X-Mind Unity delivers a successful X-ray every time with minimal exposure to radiation. ACE technology analyses the exposure and automatically freezes the perfect image. No more overexposed images!



\$5,999

X-Mind DC

Reliable, consistent quality and long lasting high performance. With the X-Mind DC, safe exposure levels and high quality images are guaranteed.



\$4,999

• X-mind Unity + Sopix Inside Standard Size 1

\$12,500

SAVE \$5,775!

• X-mind Unity + Sopix Inside Standard Size 2

\$15,500

SAVE \$6,460!

• X-mind Unity + Sopix Inside HD Size 1

\$14,500

SAVE \$8,605!

• X-mind Unity + Sopix Inside HD Size 2

\$15,600

SAVE \$12,780!





Innovative imaging

**PSPIX
SAVE
\$6,251!**

PSPIX²

is so intuitive that it has never been so easy to scan an image

COMPACT SIZE

Created with cutting edge technology and design, the PSPIX² is the smallest and most compact PSP scanner on the market.

SO SIMPLE TO USE

The large colour touchscreen provides intuitive indications for quick and easy use.

SUPERIOR IMAGES

Accurate images and striking contrast to ensure reliable diagnosis

EFFICIENCY

Click and Scan and begin your treatment within 12 seconds. PSPIX can be shared up to 10 workstations

\$9,999

SAVE \$6,251



FLEXIBILITY

Thinner and more flexible, the PSPIX² imaging plates are easy to use and provide outstanding patient comfort.

22 x 35mm



Size 0
Child

24 x 40mm



Size 1
Child Adult
Periapical

31 x 41mm



Size 2
Adult Bitewing
Periapical

69 x 54mm



Size 4
Occlusal (Equivalent to
3 size 3 plates)

1. Identify

From your initial treatment plan with an OPG Captured by X-Mind Trium



2. Diagnosis

Fluorescence technology in Sopro cameras for better patient communication, case acceptance and added diagnostic value.



X-Mind™ Trium!

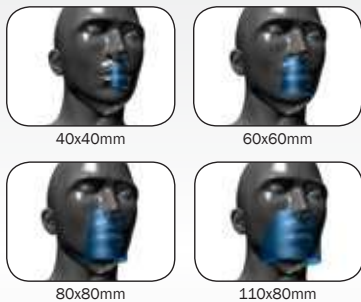


Premium quality imaging at an affordable price!

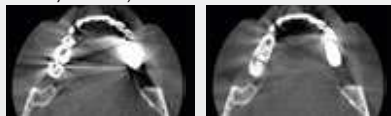
Reasons to choose X-Mind™ Trium

The smallest footprint on the market with the CEPH

- 4 F.O.V. (Field of view)



- **360° degree rotation** from 18 to 27 seconds depending on the selected field of view
- **An artefacts reduction filter (STAR)** for easy tissue distinction (bone/tooth/metal)



- Option to upgrade to 3D

ACTEON imaging suite



Quality images via an interface that is simple, quick and intuitive

- **Easy to mark landmarks** on mandible, maxilla and angulation of the teeth
- **Able to import images** to third party software

Ask us about Q4 Special Pricing Offers!

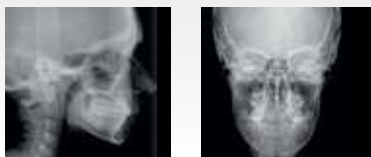
FREE Bonus PC workstation with 2D Upgradable Trium

FREE Bonus Newtron P5XS B.LED Ultrasonic Benchtop Scaler* With Trium 3D or 3D Upgrade

Book a demo at the showroom on 1800 773 743



Cephalometric radiology



- Due to its patented cinematic and collimation, patient positioning is easier on X-Mind® Trium.
- Install the cephalometric arm on the right or left, depending on the configuration of the office.

Panoramic radiology



- Whether raw or filtered to optimise the details, panoramic X-Mind Trium images support a fast and easy diagnosis.

- **CLEAREST 3D IMAGES ON THE MARKET**
- **LOWEST RADIATION EXPOSURES**
- **EASY TO USE**
- **SMALLEST FOOTPRINT**
- **NO LICENSING FEES!**
- **RELIABLE AFTER-SALES SUPPORT**

3. Treatment Plan

Start your treatment with HD Sopix Sensors and X-Mind Unity x-ray generators. PSPIX2 – The most versatile and fastest scanner producing digital radiographs in seconds



12 SECONDS

4. Integrate

Complex cases need a 3D perspective. X-Mind Trium delivers 75µm resolution images for the most predictable outcome.



X-Mind™ Prime - OPG/CONE BEAM

REALIZE A COMPLETE OVERVIEW OF THE MOUTH

PROVIDE A GLOBAL CHECK-UP WITH HIGH-QUALITY PANORAMIC IMAGES

- EASY TO INSTALL
- SIMPLE TO USE
- GREAT RETURN ON INVESTMENT

With X-mind Prime, benefit from:

- Accurate panoramic examinations
- Improved communication with your patients
- Minimum time for examinations preparation
- Sharp image at first view



Interproximal carries on 21 and 22. Endodontic treatment and apical lesion on 47.



Wisdom teeth positioning.

Ask us about Q4 Special Pricing Offers!

FREE Bonus - 1 year Comprehensive Warranty + 2 years Manufacturer's limited warranty!



Verify the implant positioning right after the surgery.



Check the endodontic treatment performed on the 47.



FOLLOW-UP YOUR TREATMENT AND EFFICIENTLY COMMUNICATE WITH YOUR PATIENT

OFFER 1: BUY ANY TWO (2) of these Imaging Solutions...



GET One (1) SOPRO717 Camera (S_717_0100 inc. camera dock) **FREE**

OFFER 2: BUY SOPIX² Size 1 & 2 Sensor Bundle...



GET One (1) SOPRO717 Camera (S_717_0100 including dock) **FREE**

OFFER 3: BUY 2 Cameras



GET One (1) FREE*
*(inc. docking stations, Excludes SOPRO617, free camera must be of equal or lesser value).

OFFER 4: BUY 1 PSPIX²

The first personal imaging plate scanner



GET One (1) bag & cover for imaging plate **FREE**

OFFER 5: BUY 1 X-Mind Unity or DC



Reliable x-ray technology that reduces radiation exposure...

GET 3 YEARS WARRANTY

(1-Year Comprehensive Warranty Plus 2-Year Manufacturer's Limited Warranty)

MINIMALLY
INVASIVE
SOLUTIONS



Superior osseous surgery for immediate implant placement

- Immediate implant placement.
- Decreased Pain & Swelling Post-Op
- Socket Preservation
- More Predictable
- Save more Buccal Bone
- Less Truma
- Less Bleeding

PIEZOTOME
CUBE

BUY 1 x PIEZOTOME® CUBE (F50102),
GET 1 x Extraction II Tip Kit (F87546) FREE



IMPLANT CENTER 2

The alliance of technologies for safe and atraumatic bone surgeries

The alliance of the most advanced ultrasonic and rotary technologies ensures total independence in increasingly diverse clinical areas like: periodontics, endodontics, prophylaxis, restorative, pre-implant, implant surgeries.

Innovative, broad and robust surgical and non- surgical tips range

BUY 1 x Implant Center II® (F27203),
GET 1 x Extraction II Tip Kit (F87546) FREE



Servotome a New Impulse In Electrosurgery

Perform oral surgery on soft tissue quickly, precisely and safely

Perform oral surgery on soft tissue quickly, precisely and safely

CLINICAL APPLICATIONS

- Incisions/Excisions, - Frenectomy, - Gingivoplasty
- Coagulation, - Abscess incision, - Exposure of impacted/retained teeth
- Gingivectomy, etc.

Ref# F57230



Ask Presidential about Special Pricing!

LIMITED TIME OFFERS FROM ACTEON

NEUTRON BOOSTER



BUY 1 x Newtron
Booster (Ref: F60203),
GET
2 x Newtron Tips
FREE

NEUTRON P5 B. LED



BUY 1 x Newtron
P5 B.LED (Ref: F61105),
GET
2 x Newtron Tips
FREE

NEUTRON P5XS B. LED



BUY 1 x Newtron
P5XS B.LED (Ref: F62105),
GET
1 x Scaler Kit (Ref: F00900),
FREE

All clinical applications are easy with the all-in-one air polisher

AIR N GO EASY



- A single handpiece to cover supra-gingival prophylaxis and subgingival treatments
- Greater freedom of movement for accurate treatments -
- 4 interchangeable nozzles available: SUPRA, PERIO easy, PERIO, PERIO Maintenance -
- Easier cleaning of the handpiece
- The Air-N-Go Easy handpiece is suitable for SUPRA and SUB gingival treatments.



BUY 1 x AIR N GO, **GET** 4 x Bottles 250g AIR-N-GO Powder **FREE**
(Bonus bottles contain four flavours: peppermint, lemon, raspberry & cola. o/n F10255)

MiniLED & MiniLED Supercharged III

MiniLED Supercharged gives the greatest power while offering totally safe modes for the tooth and the restoration

Simple, the **MiniLED Led** light still outperforms in power, efficiency and speed

- **FAST MODE** The choice of rapidity. Full power during 3, 4, 5 or 10 sec, according to the composite thickness

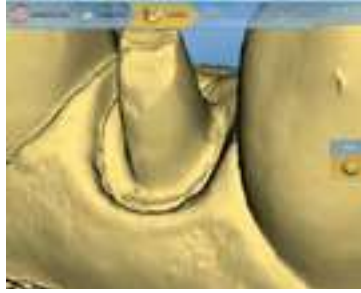
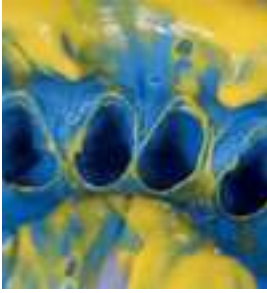
- **PULSE MODE** Limits temperature rise. 5 or 10 flashes of 1 sec for a secure composite polymerization
- **RAMPING MODE** Avoids composite retraction. Progressive power increase during 9 or 15 sec to ensure perfect restoration sealing
- **Visibility Luminous screen** with customizable modes and times, curing time count and load indicator

BUY 1 x Mini LED Supercharged or 1 x MINI LED
GET 1 x 7.5mm or 5.5mm Opalescent Light Guide **FREE**

LIMITED TIME OFFERS FROM ACTEON

An efficient and atraumatic sulcular opening for a natural and aesthetic prosthesis with 18 Years of Clinical Experience

- Unparalleled Performance
- Multiple Indications
- Maximum Efficiency
- Painless & Atraumatic Procedure



BUY 2 x 20 Capsule Boxes of Expasyl GET 1 x 6 Capsule Box Expasyl FREE
BUY 1 x Mini Kit (6 Capsules + 12 Cannulas + 1 applicator)
GET 1 x 6 Capsule Box Expasyl FREE

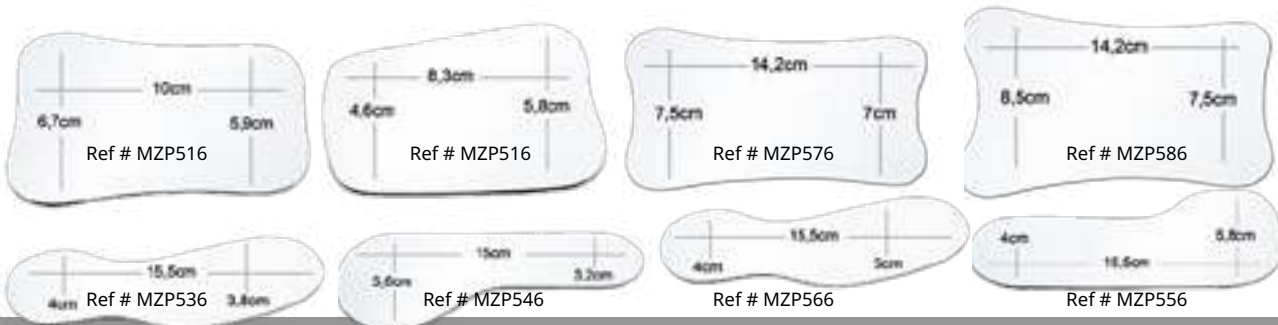
Ris|Kontrol[®] air/water dental syringe

- **Flexible:** More flexible tips and very easy to bend with no shape-memory; keeping the ideal curve
- **Dry Air:** Two separate tubes guide air and water from the syringe to the end of the tip, ensuring totally dry air.
- **Ecological:** Tips made from entirely recyclable food-quality plastic Environmentally-friendly - pollution free in the case of combustion
- **Safe:** Protection for the patient, the practitioner and assistants. Reduced risk of direct or cross-contamination. No risk of ingestion: safety locking device
- **Universal:** Adec, Planmeca, DCI, Kavo, Sirona, Belmont, Morita S12
- **Variety of flavours,** Classic White (no scent), Classic Blue (no scent), White - Mint, Mandarin - Orange, Black - Liquorice, Green - Aniseed, Purple - Blackcurrant



BUY 3 x Boxes Riskontrol tips GET 1 x Riskontrol Adapter or 1 x Box 250 Riskontrol Tips FREE

MIRRORS - PURE REFLECT[®] TECHNOLOGY



BUY 3 x Photographic Mirrors GET 1 x Mirror Cassette (Ref # 233.19) FREE
BUY 2 x Boxes of Acteon Mouth Mirrors
GET 1 x Box FREE (mix N Match Ok)



MINIMALLY INVASIVE PLANNING



X MIND prime

It's Time For Efficient 3D Diagnosis

- 3D diagnosis is more accessible than ever with a smart and compact solution
- Zero footprint space with the innovative wall mounted system
- Face- to- face patient positioning
- Unmatched quality (48 micron pixel size)
- Includes: workstation pc and monitor, wall switch, light.
- Mac and windows compatible with ais software
- 1 Minute to edit your implant report with the intuitive AIS software
- Multiple fov fulldentition (85 x93mm)-single jaw (85 x 50mm)-manibular teeth (50 x 50mm)- maxillary teeth (50 x50mm) tmj (85 x93mm)-sinus (85 x 93mm)
- Acteon will provide 5 pro licenses with each prime 3d.



X MIND prime 2D

It's Time For Smart Panoramic X-Rays

- **X-Mind prime 2D** is the latest addition to ACTEON's panoramic imaging product line. It blends cutting-edge technology with ease of use in a compact design. With X-Mind prime 2D, high tech is at your fingertips with tools for accurate diagnosis.
- **X-Mind prime 2D** is a lightweight and compact system that can fit into virtually any dental office. With its intelligent, wall-mounted design, the unit takes up zero floor space. Because the unit is delivered preassembled to the office, it can be installed by a single technician in under an hour, so it is up and running and does not interfere with office production.
- **2D diagnosis is more accessible than ever with a smart and compact solution**

BUY X-Mind prime 2D or 3D
GET 1-Year X-Mind prime Comprehensive X-Mind trium Warranty *plus*
 2-Years X-Mind prime Manufacturer's Limited Warranty

3D Technology that facilitates Implant planning with instant volume measurement and bone density assesment



- **A FULL 360° ROTATION WITHOUT STITCHING IMAGES** A superior image acquisition achieved with a full 360° rotation
- **Finest Image Precision Of 75 Micrometers (µm)** Enables 0.1mm slice thickness
Voxel size is key for greater detail.

- 4 Selectable FOVs; 40 x 40mm, 60 x 60mm, 80 x 80mm & 110 x 80 mm
To select the scanning area for examination and to minimise radiation exposure to patients
- An Optimal filter for reading metal artefacts
X-Mind Trium is equipped with dynamic artefact reduction filter to eliminate streaks and dark bands caused by the presence of metal

- Windows and Mac compatible
- Acteon will provide 5 PRO licenses with each Trium 3D
- The smallest footprint with CEPH (Patented)
- 5 year Warranty on Parts

X-MIND trium 3 SOLUTIONS IN 1

- X-Mind® trium has an extensive range of options. It is upgradable on site.
- X-Mind® trium will adapt to the ever-increasing needs of your clinic by adding 3D imaging or digital cephalometric modalities when you decide it is necessary.



	X-Mind® trium Pan	X-Mind® trium Pan 3D	X-Mind® trium Pan Ceph	X-Mind® trium Pan Ceph 3D
Pan	●	●	●	●
3D	○	●	○	●
Ceph	○	○	●	●

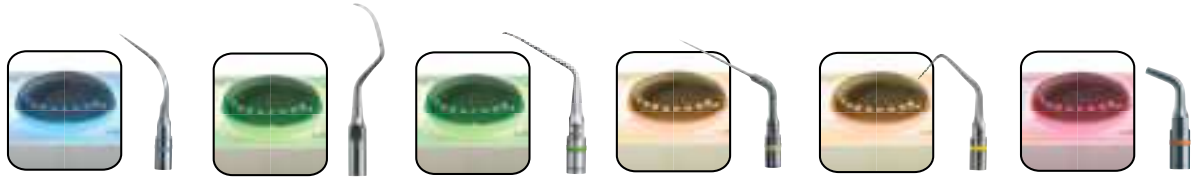
○ : available option

BUY Any 2D, upgradable X-Mind trium GET an acquisition pc at NO CHARGE†

†PAN upgradable or PAN-CEPH upgradable only. Excludes 2D X-MIND Trium's that cannot be upgraded. Acquisition PC includes manufacturer warranty only (monitor not included).

BUY GET Any 3D version of X-Mind trium or a 3D X-Mind trium upgrade 1 x Newtron P5 XS B.LED Ultrasonic Scaler FREE plus 1-Year Comprehensive X-Mind trium Warranty plus 5-Years X-Mind trium Manufacturer's Limited Warranty

NEWTRON TIPS



Over 80 different tips, with exclusive and patented designs, alloys and coatings that won't damage the different surfaces treated



PROPHYLAXIS PERIODONTICS IMPLANT CARE ENDODONTICS SURGICAL ENDODONTICS CONSERVATIVE & RESTORATIVE DENTISTRY

scaling

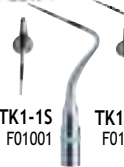


periodontics



perioPrecision

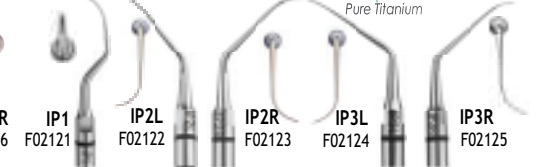
periomaintenance



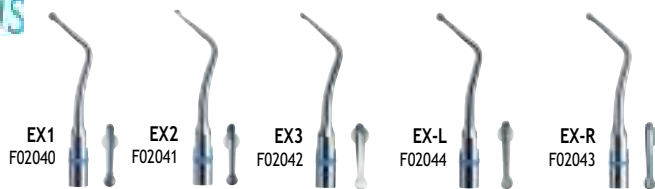
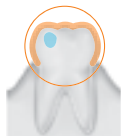
perioSoft (4-Pack)



implantProtect Pure Titanium



excavus



BUY 4 x Newtron tips

GET 1 x FREE (mix N Match Ok)

irrisafe

(4 - Pack)



IRR 20-21mm - F43807
 IRR 20-25mm - F43808
 IRR 25-21mm - F43805
 IRR 25-25mm - F43806



ET40
F88012

ET40D
F88014

endodontics

(4 - Pack)

K-Files
(4-Pack)



K10/21mm - F43710
 K10/25mm - F43712
 K15/21mm - F43715
 K15/25mm - F43717
 K25/21mm - F43725
 K25/25mm - F43727
 K30/21mm - F43730
 K20/25mm - F43732

ENDOsuccess
Retreatment



ET18D
F88017

ETBD
F88020

ET20
F88011

ET25
F88018

ET25S
F88021

ET25L
F88022

ETPR
F88019

ENDOsuccess
Apical Surgery



AS3D
F00065

AS6D
F00079

AS9D
F00067

ASLD
F00080

ASRD
F00081

ENDOsuccess
Canal Access Prep



CAP1
F88181

CAP2
F88182

CAP3
F88183

PerfectMARGIN
Rounded



PM1
F02250

PM2
F02251

PM3
F02252

PM4
F02253

PerfectMARGIN
Shoulder

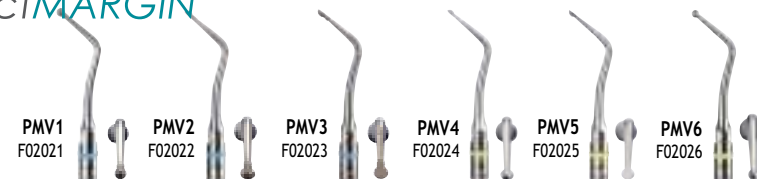


PMS1
F02254

PMS2
F02255

PMS3
F02256

PerfectMARGIN
Veneers



PMV1
F02021

PMV2
F02022

PMV3
F02023

PMV4
F02024

PMV5
F02025

PMV6
F02026

ROUND TORQUE WRENCHES



F81322

BUY 4 x Newtron tips

GET 1 x FREE (mix N Match Ok)

