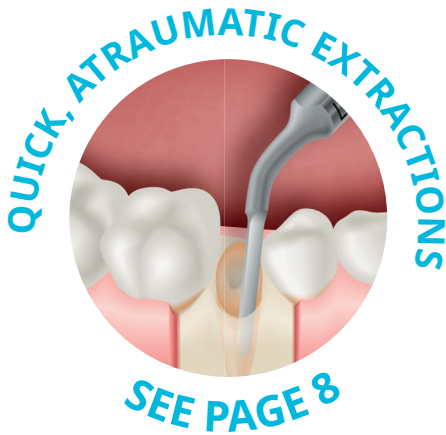


# I AM POWERFUL

## PIEZOTOME CUBE

LESS TRAUMA  
LESS DRAMA



ACTEON

# -350 BC FORCEPS

Mentioned by Aristotle in approx -350 BC, forceps introduce the beginning of extraction.

DESTRUCTION OF THE SOCKET

CAN CAUSE FRACTURE

REQUIRES FORCE

REQUIRES CROWN ACCESS

# 1875 ROTARY INSTRUMENT

Dental handpieces allowed a reduction of the force needed and easier access compared to forceps.

DESTRUCTION OF THE SOCKET

MANDATORY FLAP

POST-OP COMPLICATIONS

NO TACTILE SENSE

# 2019

FOR THE FIRST TIME,  
**ULTRASONIC SURGERY IS**  
**POWERFUL ENOUGH TO OFFER**  
**EXTRACTIONS AT THE SAME SPEED<sup>1</sup>**  
AS ROTARY INSTRUMENTS BUT  
MUCH SAFER!



# ROTARY INSTRUMENT

# VS

# CUBE TECHNOLOGY

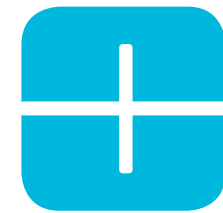
SAME SPEED<sup>1</sup>

**Dr. Jay B. Reznick, DMD, MD**

*“The dynamic power of **PIEZOTOME® CUBE** cuts easier and with less pressure than other ultrasonic devices.”*

Immediate destruction of bone

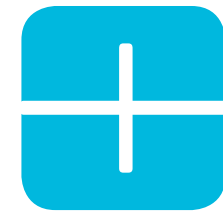
—



Socket preservation

Mandatory flap

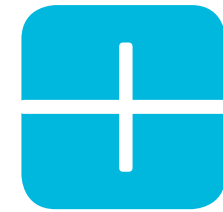
—



Safe for soft tissues

Post-op pain duration 2 days<sup>2</sup>

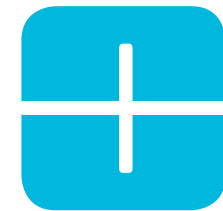
—



Recommended for immediate implant placement

Risk of damaging soft tissues<sup>2</sup>

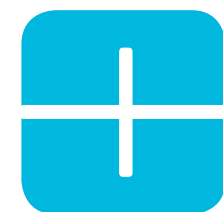
—



No force needed

Physically taxing<sup>3</sup>

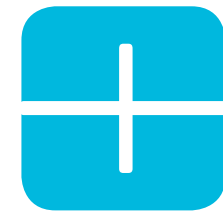
—



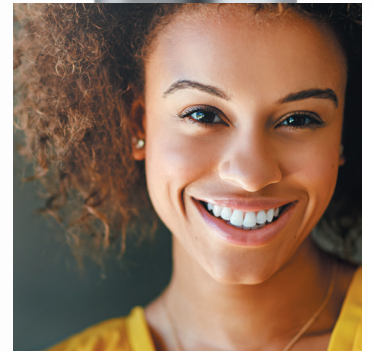
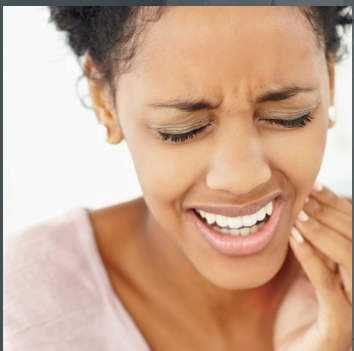
50% less pain & swelling<sup>4</sup>

Noisy and scary for the patient

—



98% less analgesics intake<sup>2</sup>



# UNLEASH THE POWER OF PIEZOTOME®

# CUBE PROCEDURES

## NEUTRON TECHNOLOGY

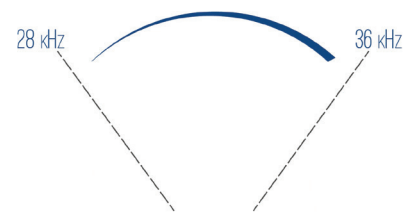
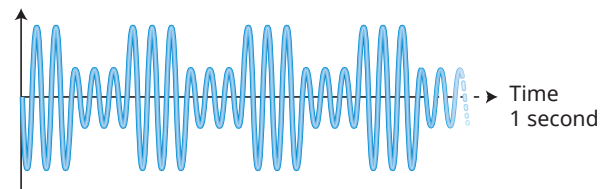
**PIEZOTOME®** ultrasonic surgery is guided by patented **NEUTRON®** technology. The handpiece and tips are perfectly tuned to ensure the best performance with unique clinical benefits, to tackle each surgery with confidence.



### MODULATION

- Alternation between high and low intensity
- Soft tissue preservation with better tissue recovery and cell regeneration

Amplitude Piezotome modulation mode



### FREQUENCY

- Automatic adjustment 28-36kHz according to every tip's shape and weight
- Maximum performance for each procedure

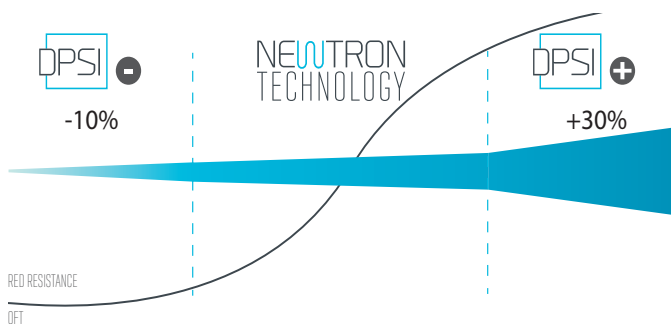


**Dynamic Power System Inside**  
POWER INTUITIVELY ADAPTED  
FOR MAXIMUM EFFICIENCY & SAFETY

According to the resistance encountered, the **D.P.S.I.** smart assistance will:

**Increase the power +30%** improving cutting performance

**Decrease the power -10%** to be even safer on soft tissues



### BONE SURGERY

#### Osteotomy/Osteoplasty

Clean and thin cut for maximal bone volume grafts *Ref. F87509*



### CREST SPLITTING

Rapid and minimally invasive technique for controlled ridge splitting *Ref. F87567*



### SINUS LIFT

#### Lateral Sinus Lift

Unbeatable comfort: selective and hemostatic cut *Ref. F87519*



### INTRALIFT™

#### Crestal Sinus Lift

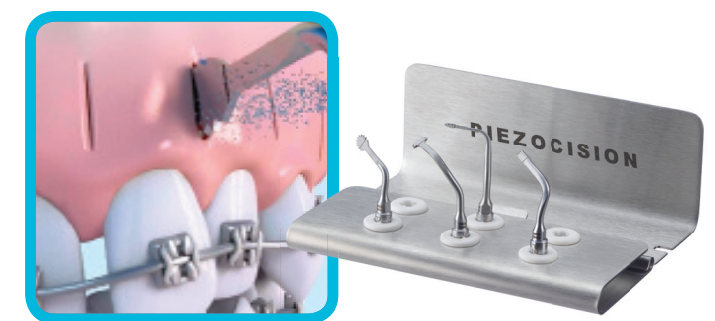
Minimally invasive surgery for smooth internal sinus elevation *Ref. F87536*



### CROWN EXTENSION

#### Crown Lengthening

Incomparable precision and accessibility *Ref. F87554*



### PIEZOCISION™

#### Accelerated Orthodontic Surgery

Minimal incisions, minimally invasive *Ref. F87576*

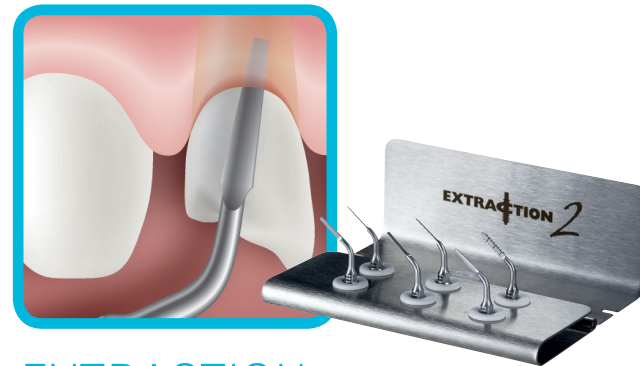
# EXTRACTIONS: LESS TRAUMA, LESS DRAMA



## EXTRACTIONS WITH IMMEDIATE IMPLANT PLACEMENT

Extractions can sometimes be difficult. With **PIEZOTOME® CUBE**, make them simple and less traumatic:

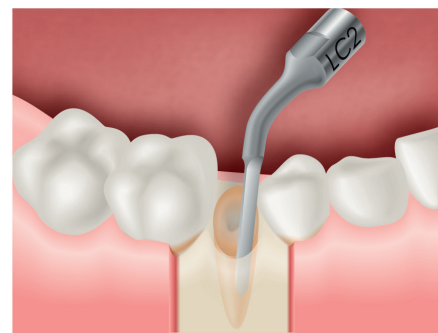
- Preserve more bone
- Faster healing
- Less post-operative swelling
- Like a "powered periostome"



### EXTRACTION

**Syndesmotomy**  
For maximum bone preservation  
Ref. F87546

- Reduce the risk of buccal plate fracture and other complications
- Increase bone preservation and extraction procedure predictability
- Tips follow the contour of teeth and bone



1. Choose the appropriate tip according to the tooth location or root section



5 TIPS FOR VIRTUALLY ANY TOOTH IN ANY PATIENT

2. Activate the tip before its insertion. Use an up and down motion to help cool down the end of the tip\*

\*Very important!



3. Gently move around the tooth until complete avulsion and extract the root in one piece



Courtesy of Pr. F. Louise

# CLINICAL BENEFITS AT EACH STAGE OF YOUR SURGERY

## INTRA-OPERATIVE



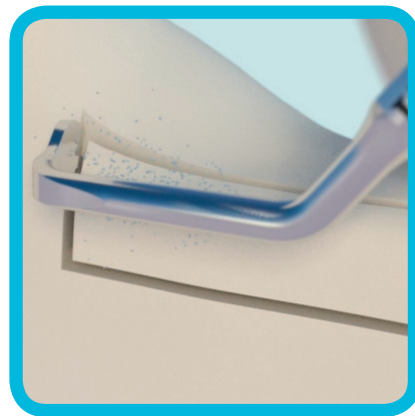
### SAFETY

- Cutting selectivity: soft tissue is preserved (nerves, membranes and arteries)
- Intraosseous temperature is under control



### PRECISION

- Fine and consistent cut on all types of bone
- Minimal bone loss for less invasive procedure



### COMFORT

- New automatic power control for smooth and effortless cut
- Easy bone access with exclusive tip designs



### VISIBILITY

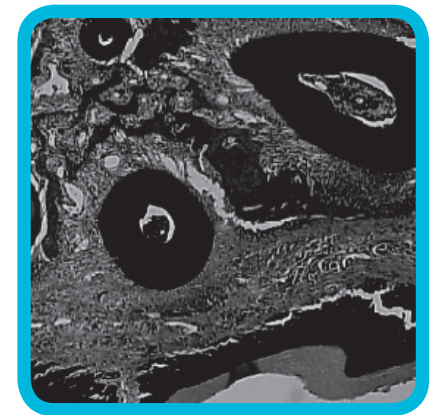
- Consistent irrigation flow
- Cavitation: microbubbles releasing oxygen has a hemostatic effect

## POST-OPERATIVE



### SUPERIOR OUTCOMES

- Reduced pain
- Less analgesics
- Reduced swelling



### GREAT HEALING

- Predictable
- Fast recovery
- Bone densification

« *PIEZOTOME® surgery is superior in atraumaticity and soft-tissue safety (...) No lesions of the mandible nerve were detected with PIEZOTOME® surgery.* »

« *THE PIEZOTOME® produced the smallest increase in intraosseous temperature.* »

*Prof. Dr. Marcel Wainwright (Sweden) - "PIEZOTOME® has made my surgeries more predictable, easier, faster and significantly less traumatic which also helped increase the number of patients I have. Both surgeons and patients do benefit equally."*

« *86% of the patients were observed with no postsurgical swelling and 87% had no postsurgical pain.* »

« *The healing at the clinical level is much more predictable and much less painful. The amount of demineralization created (...) minimizing trauma, discomfort, and enhancing patient's acceptance.* »

## EQUIPMENT DELIVERED WITH

- 1 CUBE LED handpiece
- 1 torque wrench
- 1 multifunction foot pedal
- 1 irrigation bracket
- 1 handpiece holder
- 5 sterile, disposable irrigation lines
- 5 autoclavable irrigation clips

## UNIT DIMENSIONS

- Length 9.8 in x Height 6.3 in x Depth 10.7 in
- Weight: 7.7 lbs

## FOOT PEDAL DIMENSIONS

- Length 6.8 in x Height 5.5 in x Depth 6.9 in
- Weight: 2.2 lbs

[www.acteongroup.com](http://www.acteongroup.com)

1. Shanghai Kou QiangYi Xue. Comparative study of complications among routine method, high speed turbine handpiece and piezosurgery device after extraction of impacted wisdom teeth. Shanghai Journal of Stomatology. 2012 Apr;21(2):208-10.
2. Troedhan A, Kurrek A, Wainwright M. Ultrasonic Piezotome surgery: it is a benefit for our patients and does it extend surgery time? A retrospective comparative study on the removal of 100 impacted mandibular 3rd molars. Open Journal of Stomatology. 2011;1:179-184
3. Cicciù M, Bramanti E, Signorino F, Cicciù A, Sortino F. Experimental study on strength evaluation applied for teeth extraction: An in vivo study. Open Dental J. 2013;7:20-26. Published online 2013 Mar 8
4. Goyal M, Marya K, Jhamb A, Chawla S, Sonoo PR, Singh V, Aggarwal A. Comparative evaluation of surgical outcome after removal of impacted mandibular third molars using a Piezotome® or a conventional handpiece: a prospective study. British Journal of Oral and Maxillofacial Surgery. 2012;50:556-561
5. The most sold device according to "Global and Chinese Dental Surgical Ultrasonic Generator Industry", 2010-2020 Market Research Report" published by Prof Research, 2015
6. In vivo assessment of bone healing following PIEZOTOME ultrasonic instrumentation. J. Reside, E. Everett, R. Padilla, R. Arce, P. Miguez, N. Brodala, I. De Kok, S. Nares. Clinical Implant Dentistry and Related Research, June 2013
7. Ultrasonic PIEZOTOME® surgery: is it a benefit for our patients and does it extend surgery time? A retrospective comparative study on the removal of 100 impacted mandibular 3rd molar. A. Troedhan, A. Kurrek, M. Wainwright. Open Journal of Stomatology, 2011
8. Performance of ultrasonic devices for bone surgery and associated intraosseous temperature development. S. Harder, S. Wolfart, C. Mehl, M. Kern. The International Journal of Oral & Maxillofacial Implants, volume 24, number 3, 2009
9. The transcresal hydrodynamic ultrasonic cavitation sinuslift: results of a 2-year prospective multicentre study on 404 patients, 446 sinuslift sites and 637 inserted implants. A. Troedhan, A. Kurrek, M. Wainwright, I. Schlichting, B. Fischak-Treitl, M. Ladentrog. Open Journal of Stomatology, 3, 2013
10. Tissue response during piezocision-assisted tooth movement: a histological study in rats. S. Dibart, C. Yee, J. Surmenian, J-D. Sebaoun, S. Baloul, E. Goguet-Surmenian, A. Kantarci. European Journal of Orthodontics, 36(4):457-64, 2014