



presidential
2019

Q2
April Specials



presidential
dental | medical | veterinary



1800 PRESIDENTAL
(1800 773 743)



presidential.com.au



info@presidential.com.au



[/PresidentialAustralia](https://www.facebook.com/PresidentialAustralia)

A-dec 500 - Deluxe Setup

- Sewn Upholstery (CYAN colour)
- Traditional delivery with disc pedal
- Fibre-optics and Deluxe Touchpad
- Electric Motor
- Satelec Newtron Scaler
- Cuspidor
- Chair mounted LED Light
- Assistant Suction and Instrumentation
- Monitor and Mount
- 500 Series Stools

SAVE
\$18,407

RRP \$79,060
SPECIAL PRICE:

\$60,653

**Image for illustration purposes only*



A-dec 400

- Sewn Upholstery (TIMBERWOLF colour)
- Lever Headrest
- 332/4/VER.B Radius Style Traditional Delivery System including tray
- Fibre-optics and Deluxe Touchpad
- Electric Motor
- Satelec Newtron Scaler
- 551 Assistant Suction and Instrumentation
- Cuspidor
- Chair mounted LED Light
- 400 Series Stools
- Rotoquick Coupling

SAVE
\$13,456

RRP \$61,654
SPECIAL PRICE:

\$48,198

**Image for illustration purposes only*



A-dec 300 Pedestal

- Seamless Upholstery (LEMONGRASS colour)
- 334/4/VER.B Pedestal Style Traditional Delivery System including tray
- Fibre-optics and Deluxe Touchpad
- Electric Motor
- Satelec Newtron Scaler
- Assistant Suction and Instrumentation
- Cuspidor and Support Centre
- Pedestal Mounted LED
- 400 Series Stools
- Rotoquick Coupling

SAVE
\$10,687

RRP \$49,089
SPECIAL PRICE:

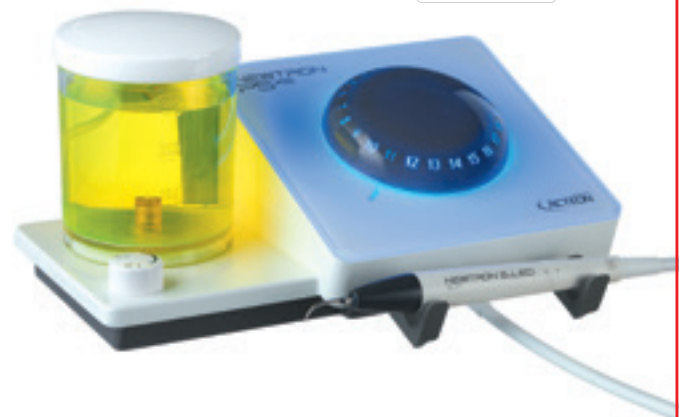
\$38,402

**Image for illustration purposes only*



P5 Newtron Benchtop Scaler

NEWTRON
P5XS
B.OLED



RRP \$1,881
SPECIAL PRICE:

\$1,504

SAVE
\$377

PLEASE CALL 1800 773 743

TO BOOK YOUR SHOWROOM APPOINTMENT AT THE NEWCASTLE OR SYDNEY FACILITIES

Vision Turbines



TK-97L OR TK-98L

Save \$1,075 each!

\$1,495

Vision Contra-angles



WK-99LTS OR WK-93LTS

Save \$1,135 each!

\$1,565

Synea Fusion Turbines



TG-97L OR TG-98L

Save \$836 each!

\$999

Synea Fusion Contra-angles



WG-99LT

Save \$700 each!

\$1,250

WG-56LT

Save \$490 each!

\$865

Alegra Contra-angles



WE-56

Save \$70 each!

\$495

Coupling



RQ-24

*Save \$115 each!**

\$395

*with purchases of 5 or more handpieces.



Miele Thermal Disinfector

Miele PG 8581 White

- Eco dry – door automatically pops open at end of cycle, steam escapes naturally
- 42 minute cycles
- White model = 1 integrated dosing pump (chemical manually loaded, and automatically release via door)



Miele PG 8581 Stainless Steel

- Eco dry – door automatically pops open at end of cycle, steam escapes naturally
- 42 minute cycles
- Stainless Steel model = 2 integrated dosing pumps (1 manually loaded in door, 1 automatic release from inside back of the unit)



Miele PG 8591 Stainless Steel

- Stainless Steel
- Dry Plus – fan forced drying, guarantees dry load release
- 40 minute cycle
- 2 integrated dosing pumps



**For MIELE
Sales or Service
please call us on
1800 773 743**

PURCHASE A CHAIR PACKAGE & SAVE!



BUY A-DEC 500,
RECEIVE
\$13,000
W&H BONUS*



BUY A-DEC 400,
RECEIVE
\$9,000
W&H BONUS*



BUY A-DEC 300,
RECEIVE
\$6,500
W&H BONUS*



*W&H Bonus applies to qualifying chair configurations,
*W&H Bonus can be selected from Restoration & Prosthetics range, also Reprocessing range.

BONUS

FREE upgrade

From Seamless to Sewn
upholstery when you purchase
an A-dec chair package*

**SAVE
UP TO
\$2,010!**



BONUS

50% OFF NEOVO 17"
AND 22" MONITORS*
(while stocks last)

**50%
OFF!**



BONUS

STOOLS PACKAGES

400 SERIES STOOLS - \$2,750 (SAVE \$1,175!)

OR

500 SERIES STOOLS - \$3,750 (SAVE \$2,010!)



A-dec 400 STOOLS



A-dec 500 STOOLS

Package Special Includes:

- 200 Chair
- Seamless Upholstery
- 200 Delivery with Standard Touchpad and large workspace
- Satelec Scaler with Potentiometer
- Support Centre with Spittoon
- Assistants Instrumentation
- 200 Halogen Light



**\$1,000
OFF**
UPGRADE TO
LED LIGHT WITH
TOUCHPAD

**A-DEC 200
FROM
\$25,500!**

OR

**BUY A-DEC 200,
RECEIVE
\$3,500
W&H BONUS***

Optional Upgrades

- 300 Delivery on 200 chair
- Sewn Upholstery
- Satelec Scaler
- 300 LED light
- Stainless Steel Suction HVE/SE handpieces
- Electric Motor
- Monitor and Mount
- Stools

*W&H Bonus applies to qualifying chair configurations.

*W&H Bonus can be selected from Restoration & Prosthetics range, also Reprocessing range.

Reprocessing devices

Perfectly maintained instruments are longer lasting. Correct cleaning and lubrication are essential to the function and long working life of dental instruments.



NEW

assistina^{TWIN}



Want to reduce your reprocessing time?

The Assistina TWIN performs your instrument maintenance quicker than ever before. Through the innovative oil nebulisation technology, W&H has been able to reduce the maintenance process to a record time of just **10 seconds**.

SIMPLE

No waiting, No Stress

FAST

Oil service in record time – only 10 seconds!

EFFICIENT

Maximum oil service. Minimum oil consumption

PRACTICAL FOR EVERY PRACTICE

Process up to 360 instruments per hour

SAVE

Only 3 cents per handpiece!

Special Price
\$2,999

SAVE \$2,001!

W&H Assistina 3x3 Excess stock special!



SAVE
\$1,544

RRP \$7,720
SPECIAL PRICE:

\$6,176

Great bulk deals on handpieces.

Call us on 1800 773 743
for more details.



A complete solution for your sterilisation needs

Instruments

Straight and contra-angle handpieces Turbines



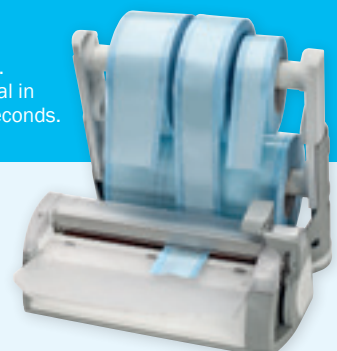
Assistina

Instrument processing units



Seal2

Packaging.
Perfect seal in just two seconds.



Let's talk sterilisation

Want more information on the latest products, protocols and solutions?



Call 1800 773 743 to book a free consultation today

LISA
17L
\$13,995

22L
\$14,995

W&H LISA



Easy to use

Thanks to a new user interface and user-friendly menu structure.



Full traceability

Thanks to Wi-Fi connection and Mobile App for Real Time Remote Monitoring.



Ergonomics

Thanks to the new internal and external design.



Advanced performance

Accelerated type B cycle thanks to Eco Dry Technology.



SAVE 50%

LisaSafe traceability Kit when you purchase a Lisa



LINA
17L
\$8,888

22L
\$9,888

NEW



Simple navigation

All sterilisation options are easily accessible with the easily operated keypad.



Built-in data log

Sterilisation cycles can be saved to a USB stick without needing cables and external boxes.



Class B cycles exclusively

The Lina steriliser works exclusively with Class B cycles and with short ECO B cycles for small loads.



FREE MultiDem

Water demineraliser system with any Lisa or Lina purchase* Valued at \$1,040 *while stocks last

Lisa
Sterilisation



LisaSafe and
Barcode scanner
Labelling and
traceability





FIGHT PERIODONTAL DISEASE

**20% of Australians
suffer from
periodontal disease.***

**Inform your patients that periodontal
disease infection impacts their
whole body, with potential serious
health implications!**



DETECT



Inflammation caused by
periodontal disease.

DIAGNOSE



Periodontal disease at
all of its stages and
educate your patients.

TREAT



Periodontal disease
at its earliest stages.



SOPRUCARE

Reveal plaque, calculus, and gingival inflammation.

*Australian National Survey of Adult Health (2004–2006) <https://www.aihw.gov.au/reports/dental-oral-health/oral-health-and-dental-care-in-australia-2015/contents/oral-health-in-australia>

A-dec hygienist package

The best come together
to provide the perfect
workflow solution for Hygienists.



Simply build onto your existing
A-dec Hygienist chair or add to
a new Hygienist chair purchase.

SOPROCARE Intraoral Camera



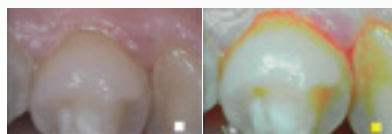
The SOPROCARE concept was developed to assist the dental professional during prophylaxis and periodontal treatment in the dental office. SOPROCARE reveals caries in CARIO mode, as well as new and old dental plaque in PERIO mode. SOPROCARE is the first product on the market to reveal gingival inflammation. In DAYLIGHT mode, SOPROCARE can also be used as a camera, providing all of the necessary tools to perform a complete and time efficient oral examination.

**Under Perio mode,
it differentiates the
colour of tissue and
reveals old plaque
by a shade of yellow
and orange. Increase
patient acceptance
today and reveal
what they can't see
under the naked eye.**

DENTAL PLAQUE

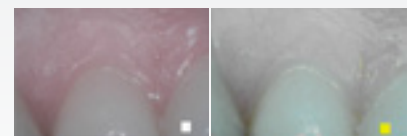


The healthy teeth keep their original colour



The old plaque ranges from yellow to orange depending on its mineralization

INFLAMMATION



The healthy gum appears pale pink



A severe gingival inflammation is indicated by bright and voluminous magenta-red areas

Images made by Pr. Tassery, Head of the Preventive and Restorative Department, Marseilles Dental School, University AMU, LBN Montpellier I.



Innovative imaging

Communicate with your patients using Acteon cameras.

An easy way to show the need for treatment with high quality images.

PRICES ARE WHEN PURCHASED WITH AN A-DEC CHAIR, AND INCLUDE CHOICE OF FREE PORTABLE USB DOCK, OR CHAIR-INTEGRATED USB DOCK

SOPRUCARE

Detect and diagnose

- 1 **Cario mode** – caries are detected as red, surrounding tissue is displayed black and white
- 2 **Perio mode** – highlight plaque, calculus, and gingival inflammation
- 3 **Daylight mode** – see details that are not visible with the naked eye

Price \$6,499*

SAVE OVER \$4,000



SOPRULIFE

Improve the quality of your treatment

- 1 **Diagnosis Aid mode** – identifying the development of occlusal and/or proximal carious lesions
- 2 **Treatment Aid mode** – perform minimally invasive treatment by preserving healthy tissue
- 3 **Daylight mode** – from portrait to macrovision, obtain sharp images with large depth of field

Price \$6,499*

SAVE OVER \$4,000

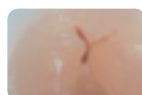


SOPRU717

Macro Vision with 3 magnifications modes; Extraoral, Intraoral & Macro mode with 115 x magnification.

Price \$4,499*

SAVE OVER \$4,000



SOPRU617

Point and Shoot with fixed focus and no fish eye effect, great for first time users and sessional operators.

Price \$3,499*

SAVE OVER \$3,500



*Includes free docking station

Contact us on 1800 773 743 for an in-surgery demonstration



SAFE, SIMPLE, FLEXIBLE...



SOP!X



Size 1 Sensor (Standard definition)

\$6,599

SAVE \$2,046!

Size 2 Sensor (Standard definition)

\$9,599

SAVE \$2,751!

Size 1 Sensor (High definition)

\$8,599

SAVE \$4,896!

Size 2 Sensor (High definition)

\$12,995

SAVE \$5,775!

X-Mind Unity

\$6,599

SAVE \$2,821!

X-Mind Unity delivers a successful X-ray every time with minimal exposure to radiation. ACE technology analyses the exposure and automatically freezes the perfect image. No more overexposed images!



X-Mind DC

\$5,999

SAVE \$3,321!

Reliable, consistent quality and long lasting high performance. With the X-Mind DC, safe exposure levels and high quality images are guaranteed.



Innovative imaging



**PSPIX
SAVE
\$5,896!**

PSPIX²

**is so intuitive that it has
never been so easy to
scan an image**

COMPACT SIZE

Created with cutting edge technology and design, the PSPIX² is the smallest and most compact PSP scanner on the market.

SO SIMPLE TO USE

The large colour touchscreen provides intuitive indications for quick and easy use.

SUPERIOR IMAGES

Accurate images and striking contrast to ensure reliable diagnosis

EFFICIENCY

Click and Scan and begin your treatment within 12 seconds. PSPIX can be shared up to 10 workstations

\$9,999

SAVE \$5,896



FLEXIBILITY

Thinner and more flexible, the PSPIX² imaging plates are easy to use and provide outstanding patient comfort.

**SAVE 10%
on all plates**

22 x 35mm



Size 0
Child

24 x 40mm



Size 1
Child Adult
Periapical

31 x 41mm



Size 2
Adult Bitewing
Periapical

69 x 54mm



Size 4
Occlusal (Equivalent to
3 size 3 plates)

1. Identify

From your initial treatment plan with an OPG Captured by X-Mind Trium



2. Diagnosis

Fluorescence technology in Sopro cameras for better patient communication, case acceptance and added diagnostic value.



X-Mind™ Trium!

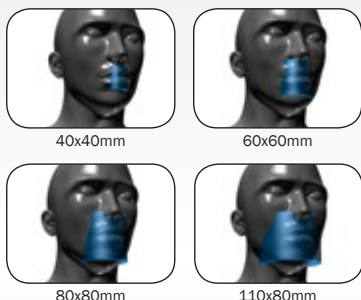
Premium quality imaging at an affordable price!



Reasons to choose X-Mind™ Trium

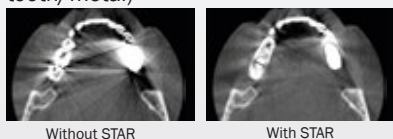
The smallest footprint on the market with the CEPH

- 4 F.O.V. (Field of view)



- 360° degree rotation from 18 to 27 seconds depending on the selected field of view

- An artefacts reduction filter (STAR) for easy tissue distinction (bone/tooth/metal)



- Option to upgrade to 3D

ACTEON
imaging suite



Quality images via an interface that is simple, quick and intuitive

- Easy to mark landmarks on mandible, maxilla and angulation of the teeth
- Able to import images to third party software

Book a
demo at the
showroom on
1800 773 743

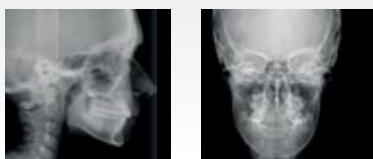
- CLEAREST 3D IMAGES ON THE MARKET
- LOWEST RADIATION EXPOSURES
- EASY TO USE
- SMALLEST FOOTPRINT
- NO LICENSING FEES!
- RELIABLE AFTER-SALES SUPPORT

Purchase any 3D Version of X-Mind Trium or a 3D upgrade and choose one of the following four imaging solutions at no charge:

1. Any Sopix Sensor
2. Any Sopro Camera & USB dock
3. X-mind Unity
4. PSPIX



Cephalometric radiology



Lateral full skull

Posterior/Anterior

- Due to its patented cinematic and collimation, patient positioning is easier on X-Mind® Trium.
- Install the cephalometric arm on the right or left, depending on the configuration of the office.



Panoramic radiology



Panoramic with improved orthogonality

Maxillary

Whether raw or filtered to optimise the details, panoramic X-Mind Trium images support a fast and easy diagnosis.



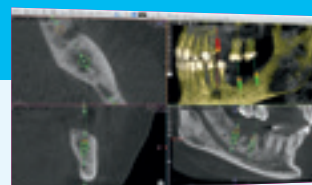
3. Treatment Plan

Start your treatment with HD Sopix Sensors and X-Mind Unity x-ray generators. PSPIX – The most versatile and fastest scanner producing digital radiographs in seconds



4. Integrate

Complex cases need a 3D perspective. X-Mind Trium delivers 75µm resolution images for the most predictable outcome.



CONSUMABLES SPECIALS

Neovo Medical Grade Monitors



50% OFF

17" or 22" Models

NE-DR-17P (while stocks last)

NE-DR-22 (while stocks last)

\$750

\$1,150

Sopro Camera Sheaths



20% OFF

Box of 500 sheaths

Save \$107.00!

\$428

85 cents per sheath (while stocks last)

Bio Hygiene - Free Trial!



Free Trial

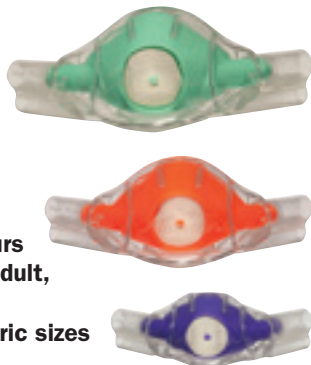
20% OFF

Bevisto Cryl 5L - Dental Chair Cleaner

\$49.50

(while stocks last)

Clearview RA Masks



- 5 flavours
- Large Adult, Adult & Paediatric sizes

SPECIAL PRICING!

\$99.90 EA

(while stocks last)

Riskontrol Disposable Syringe Tips



20% OFF

Your choice of flavours – Mandarin or Mint

\$76.00

Save \$19 per box of 250
(while stocks last)

A-dec Triplex Tips



20% OFF

23-0872-01
Pack of 5

\$72.40
SAVE \$18.10!

23-0872-02
Pack of 25

\$311.20
SAVE \$77.80!

Euronda Monoart Products



20% OFF

Helix Tests



20% OFF

Per 250 strips

Save \$48.00!

\$190

(while stocks last)

A-dec ICX Water Bottle Tablets



20% OFF

0.7L (box of 50 tablets)

Save \$17.70!

\$70.80

(while stocks last)

2.0L (box of 50 tablets)

Save \$26.40!

\$105.60

(while stocks last)

Perfect ultrasonic vibration...

- Treatments guided in real time with B.LED technology which simultaneously reveals and remove dental plaque.
- The widest range of tips (80) for a great clinical expertise and versatility, supporting both practitioners and patients.
- Perfectly controlled vibrations for precise and gentle treatments.
- The automatic and continuous frequency adjustment guarantees maximal and continuous efficiency, whatever the load applied.
- Linear and regular vibrations for painless treatments.



NEWTRON
TECHNOLOGY

NEWTRON BOOSTER



Non-LED Handpiece,
Quick-water disconnect.
(Delivered with a Newtron handpiece, a power supply,
a N°1 tip and an autoclavable universal wrench)

NEWTRON P5 B.LED



LED Handpiece, Quick-water disconnect.
(Delivered with a Newtron Slim B.Led handpiece with blue ring, a
white LED ring, a F.L.A.G kit (5x1.5ml), an Australian power supply
and a Pure Newtron kit (n.1, n.1S, H3 tips and an autoclavable uni-
versal wrench)

NEWTRON P5XS B.LED



LED Handpiece with integrated irrigation
tank for any solution. (Delivered with a Newtron Slim
B.Led handpiece with blue ring, a white LED ring, a F.L.A.G kit
(5x1.5ml), an Australian power supply and a Pure Newtron kit (n.1,
n.1S, H3 tips and an autoclavable universal wrench).

BUY 1 x Newtron Booster, P5 B.LED or P5XS B.LED
GET 3 x Newtron Tips & 1 x Universal Wrench FREE

NEWTRON® Tips - superior ultrasonics for all your procedures

- NEWTRON tips conserve teeth and meet all clinical requirements
- NEWTRON tips are developed by dentists for dentists.
They will offer you specific solutions, comfort and visibility.



BUY 3 x Newtron Tips
GET 1 x Tip FREE

BUY 5 x Newtron Tips
GET 1 x Tip plus
1 x tip wrench FREE

Highly adaptable MiniLED – SUPERCHARGED

Acteon Mini LED products use a wide emitting spectrum. To activate the polymerization of all type of dental photosensitive materials like composites, we have created a complete range of lamps specifically designed for a maximal efficiency in a minimal time, allowing to cure a few brackets to a whole quadrant, in a single gesture.

MiniLED Supercharged gives the greatest power while offering totally safe modes for the tooth and the restoration

- 2000mW/cm² (Ø7.5mm light guide)
- 3000mW/cm² (Ø5.5mm light guide) *(optional)*

- **FAST MODE** The choice of rapidity. Full power during 3, 4, 5 or 10 sec, according to the composite thickness
- **PULSE MODE** Limits temperature rise. 5 or 10 flashes of 1 sec for a secure composite polymerization
- **RAMPING MODE** Avoids composite retraction. Progressive power increase during 9 or 15 sec to ensure perfect restoration sealing
- **Visibility Luminous screen** with customizable modes and times, curing time count and load indicator



BUY 1 x Mini LED Supercharged or 1 x MINI LED
GET 1 x 7.5mm Opalescent Light Guide FREE

Outstanding Hygiene – No Sacrifice Outcomes

SAFE

- Protection for the patient, the practitioner and assistants
- Reduced risk of direct or cross-contamination
- No risk of ingestion: safetylocking device

Ecological

- Tips made from entirely recyclable food-quality plastic
- Environmentally-friendly
- Pollution free in the case of combustion

UNIVERSAL

Adapters* available for any type of equipment

- Adapters in anodized aluminium, Propylux®, stainless steel or resin, very easy to screw or clip onto the syringe of your unit.
*Class I medical devices

Dry air

Two separate tubes guide air and water from the syringe to the end of the tip, ensuring totally dry air.

Economical

Saves time (no need for cleaning/disinfection/sterilization, so, no need to ensure traceability, etc).



BUY 3 x Boxes Riskontrol tips GET 1 x Riskontrol Adapter FREE
BUY 3 x Boxes Riskontrol tips GET 1 x Box Riskontrol Tips FREE