

new  
**PSPiX**  
Beyond the future





new  
PSPIX



# A technology beyond your expectations...

## AMAZING SIZE

We create the new PSPIX, a powerful concentrate of technology, to offer you the smallest PSP scanner of the market...

## AVANT-GARDE DESIGN

With its futuristic lines and elegant design, the new PSPIX will perfectly find its place in your dental practice.

## TRUE INTELLIGENCE

Workflow has never been so smooth and so efficient through its unusual intellectual ability. A real evolution in your working practice!

## SO SIMPLE

The wide color touchscreen allows clear dialogues and fast actions.





PSPiX

IMAGING  
**ACTEON**

REAL SIZE !





## LIGHT TALKS TO YOU...

Just have a look on the PSPIX to check its status!



*Blue: Available*



*Purple: Scanning*



*Yellow: Occupied*

## CLICK & SCAN!

Save time with the new “Click and Scan” concept of the PSPIX, the simplest way to win efficiency.

Select your workstation on the touch screen and let PSPIX do the job...

The new PSPIX can also be controlled from your workstation.







# for everyone...

THE NEW PSPIX IS AN AFFORDABLE  
AND MULTI-USERS SOLUTION

## FULLY AUTOMATED PROCESS

- AUTO-ACCESS: The door only opens when the imaging plate is inserted.
- AUTO-DETECT: PSPIX automatically detects the size of the inserted imaging plate.
- AUTO-SCAN: PSPIX scans and optimizes the image before displaying it into the right workstation.
- AUTO-EJECT: The imaging plate is automatically erased and ejected for an immediate reuse.
- ECO-MODE: PSPIX automatically switches to eco-mode when not in use for a while.







# but also for each one...

The new PSPIX is so *AFFORDABLE* that you can now have one in each single room chair side.

The new PSPIX is so *SMALL* that it takes up minimum space.

The new PSPIX is so *ELEGANT* that it will light up your practice.

## SHOOT & SCAN!

With the PSPIX chairside, you significantly save time:

- You are the single-user of the scanner
- You do not need to move to another room to scan your images.
- You get your images in few seconds.

You are therefore more efficient and more dedicated to your patients' cares.









with high level  
of excellence...





## OUTSTANDING COMFORT PATIENT

The wide flexibility of wireless ACTEON imaging plates, provide the best comfort for your patients.

There are available in five sizes: 0, 1, 2, 3, 4\*



## ENHANCED IMAGE QUALITY

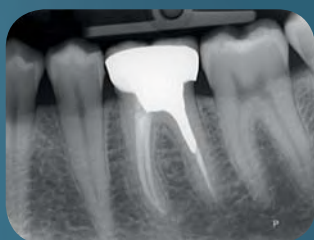
PSPIX provides accurate, sharp and contrasted images to ensure reliable clinical diagnosis.



Size 0



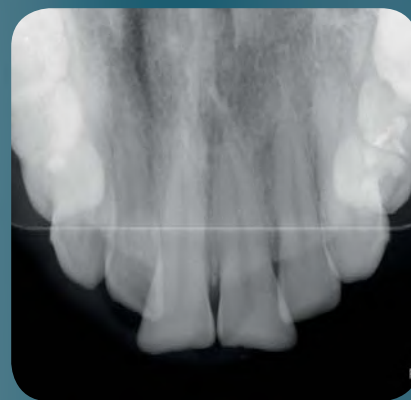
Size 1



Size 2



Size 3



Size 4

## SOFTWARE CAPABILITIES

PSPIX is delivered with Sopro Imaging software, already acclaimed by thousands of users for its ergonomy.

The new PSPIX is compatible with MAC and Windows operating systems.



\* Computed reconstruction of an image of size 4 from two imaging plates of size 3.





# and top of hygiene!

## ● REACH AUTOCLAVABILITY

Only PSPIX proposes such a level of protection.

- PSPIX has removable parts which comply with thermo-disinfectors, the latest disinfection standards.
- PSPIX offers unique autoclavable parts\* to eliminate risk of infection.

## ● OPTIMAL HYGIENE BARRIER

Hygiene is at the core of each operating step of PSPIX.

- Hygiene bags and covers ensure high degree of protection against cross-contamination.
- Soprowipe allows a perfect cleaning of the ACTEON imaging plates.
- The touchscreen stylus also offers an hygienic use.

\* Autoclavable parts in option.







# Technical specifications



## SYSTEM

Theoretical resolution \_\_\_\_\_  $\geq 20$  lp/mm  
 True resolution \_\_\_\_\_  $\geq 14$  lp/mm  
 Connection \_\_\_\_\_ Ethernet RJ-45  
 Dimensions \_\_\_\_\_ L. 154 x D. 204 x H. 193mm  
 Weight \_\_\_\_\_ 2.6kg  
 Operating voltage \_\_\_\_\_ 100 ~ 240V, 50/60Hz

## WINDOWS® MINIMUM CONFIGURATION REQUIRED

Operating system \_\_\_\_\_ Windows XP Pro SP3  
 Processor \_\_\_\_\_ Intel® Pentium IV - 1.3GHz  
 RAM \_\_\_\_\_ 512MB  
 Hard disk \_\_\_\_\_ 250GB  
 Graphic card \_\_\_\_\_ 32MB RAM unshared memory  
 compatible DirectX 9  
 Screen resolution \_\_\_\_\_ 1024 x 768  
 Ethernet board \_\_\_\_\_ 100Mb/s - 1Gb/s

## MAC® MINIMUM CONFIGURATION REQUIRED

Computer \_\_\_\_\_ MacBook® Pro 13.3" or iMac® 21.5"  
 Operating system \_\_\_\_\_ Mac® OS X 10.9  
 Processor \_\_\_\_\_ Intel® Core 2  
 RAM \_\_\_\_\_ 2GB  
 Ethernet board \_\_\_\_\_ 1Gb/s

## IMAGING PLATES

Dimensions IP Size 0 \_\_\_\_\_ 22 x 35mm  
 Dimensions IP Size 1 \_\_\_\_\_ 24 x 40mm  
 Dimensions IP Size 2 \_\_\_\_\_ 31 x 41mm  
 Dimensions IP Size 3 \_\_\_\_\_ 27 x 54mm  
 Dimensions IP Size 4 (2 x size3) \_\_\_\_\_ 52 x 54mm

## WINDOWS® RECOMMENDED CONFIGURATION

Operating system \_\_\_\_\_ Windows 7 Pro SP1  
 Processor \_\_\_\_\_ Intel Core i3  
 RAM \_\_\_\_\_ 2GB  
 Hard disk \_\_\_\_\_ 500GB  
 Graphic card \_\_\_\_\_ Chipset Nvidia® or ATI®  
 512MB unshared memory compatible DirectX 9 or more  
 Screen resolution \_\_\_\_\_ 1280 x 1024 or more  
 Ethernet board \_\_\_\_\_ 1Gb/s

## MAC® RECOMMENDED CONFIGURATION

Computer \_\_\_\_\_ iMac 27"  
 Operating system \_\_\_\_\_ Mac OS X 10.9  
 Processor \_\_\_\_\_ Intel Core i7  
 RAM \_\_\_\_\_ 4GB  
 Ethernet board \_\_\_\_\_ 1Gb/s